

Creative Space Available

1,082 SF | Suite 200

1618-1620 Central Ave NE
Minneapolis, MN



BÖHM

COMMERCIAL REAL ESTATE

For information contact:

Jon Sander, MBA, CCIM, CPM
612-788-9770
jon.sander@bohmcree.com



Space Features

1,082 Square Feet



Space & Building Features



Creative, Light Industrial, Office, Art, Flex Space Rates | 1,082 SF

Annual net/base rate (\$1,082.00/mo.) \$12.00 PSF

2023 budgeted tax, CAM and general utilities (\$694.28/mo.) \$7.70 PSF

Total (\$1,822.46/mo.) \$20.21 PSF

+ Trash/Recycling (\$40.00/mo./90 gal)

+ Air Conditioning (on average \$37.00/month)

Space: Architectural & Renovated Features Included in the Net/Base Rate

- 2nd floor location
- Large South facing windows
- Access to freight elevators
- Sink with available plumbing
- Air conditioning
- Concrete floors
- Access to common area docks
- "As is, where is"
- Tenant improvement allowance available to be amortized over term

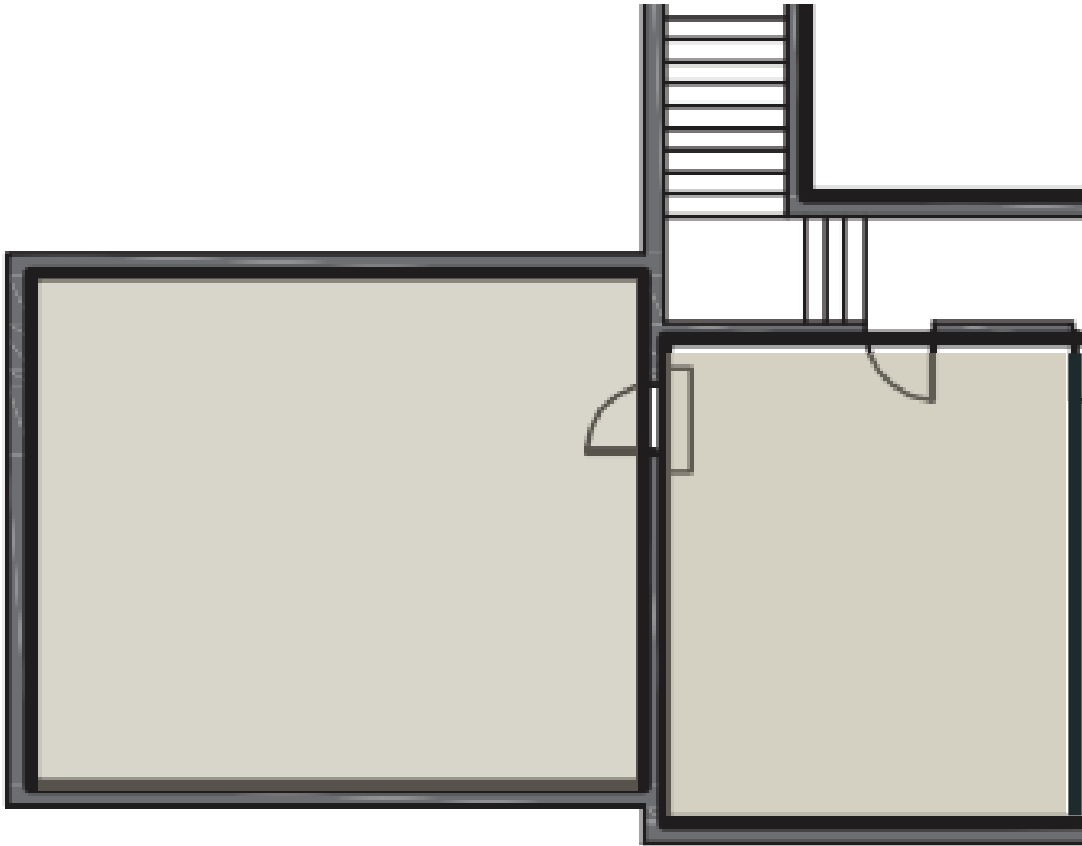
Building Features

- Diamonds Coffee & Sandwich Shoppe
- Tattersall Distilling Cocktail Room & Patio
- Dashfire Bitters Cocktail Room
- Bodies by Burgoon Fitness Studio
- MN Climbing Co-Op - Bouldering & Climbing Walls
- Northeast Tool Library
- 250,000 square foot building
- Heavy floor loads
- New heating plant that reduced stack temps by 71°F
- Fully fire sprinkled with new sprinklers heads, all new risers and new smart system, monitored 24/7
- Fiber to Denmark - 2 carriers : Century-link and Comcast
- New building electrical service
- New 240v/120v industrial grade electrical panels
- 480v/240v/208v

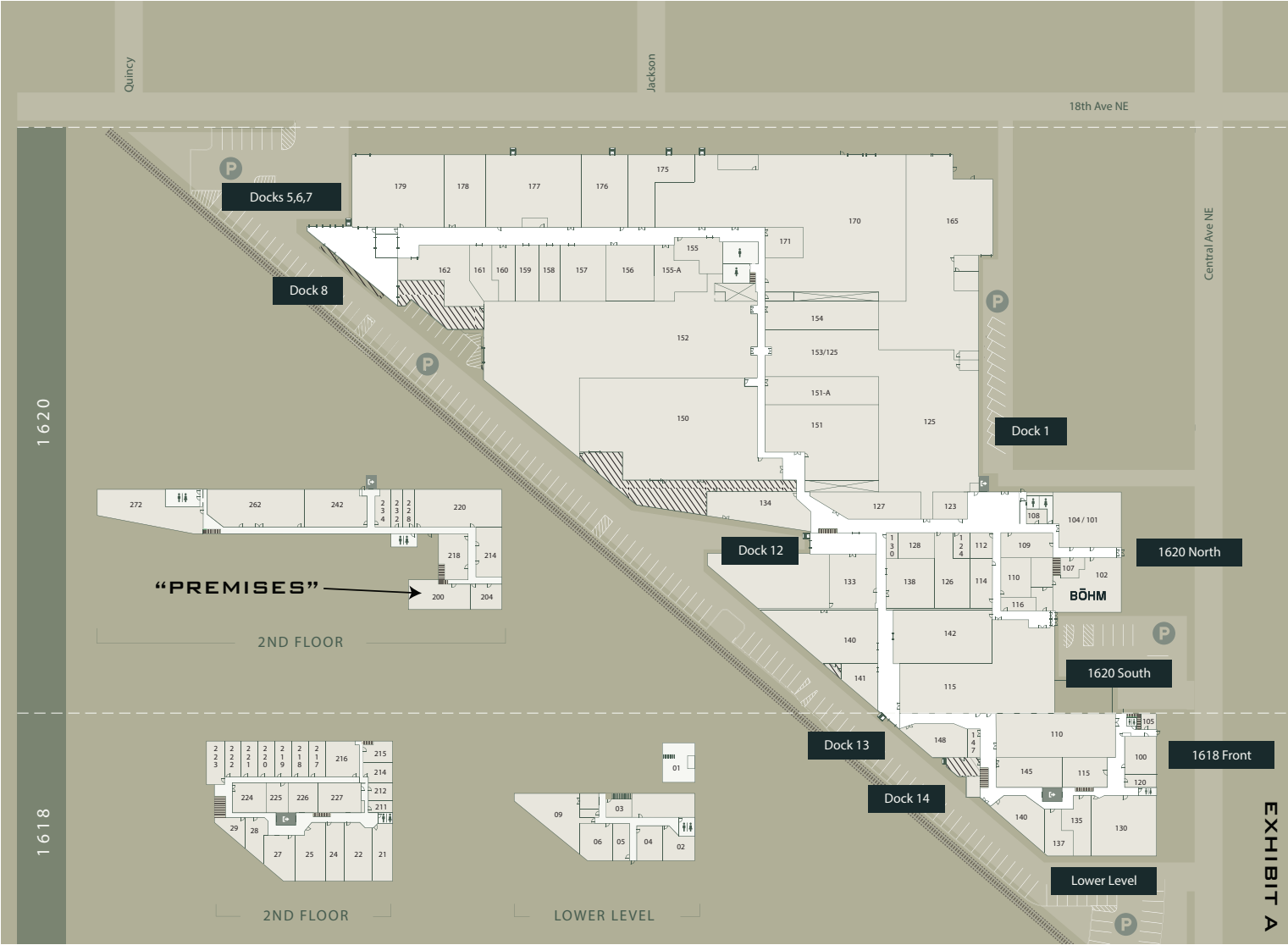
Building Services

- Built to suit & renovation services coordinated by Bohm CRE, LLC
- Professionally managed and maintained by Bohm CRE, LLC
- On-site maintenance and management
- Weeknight common area janitorial
- Professional security patrol service

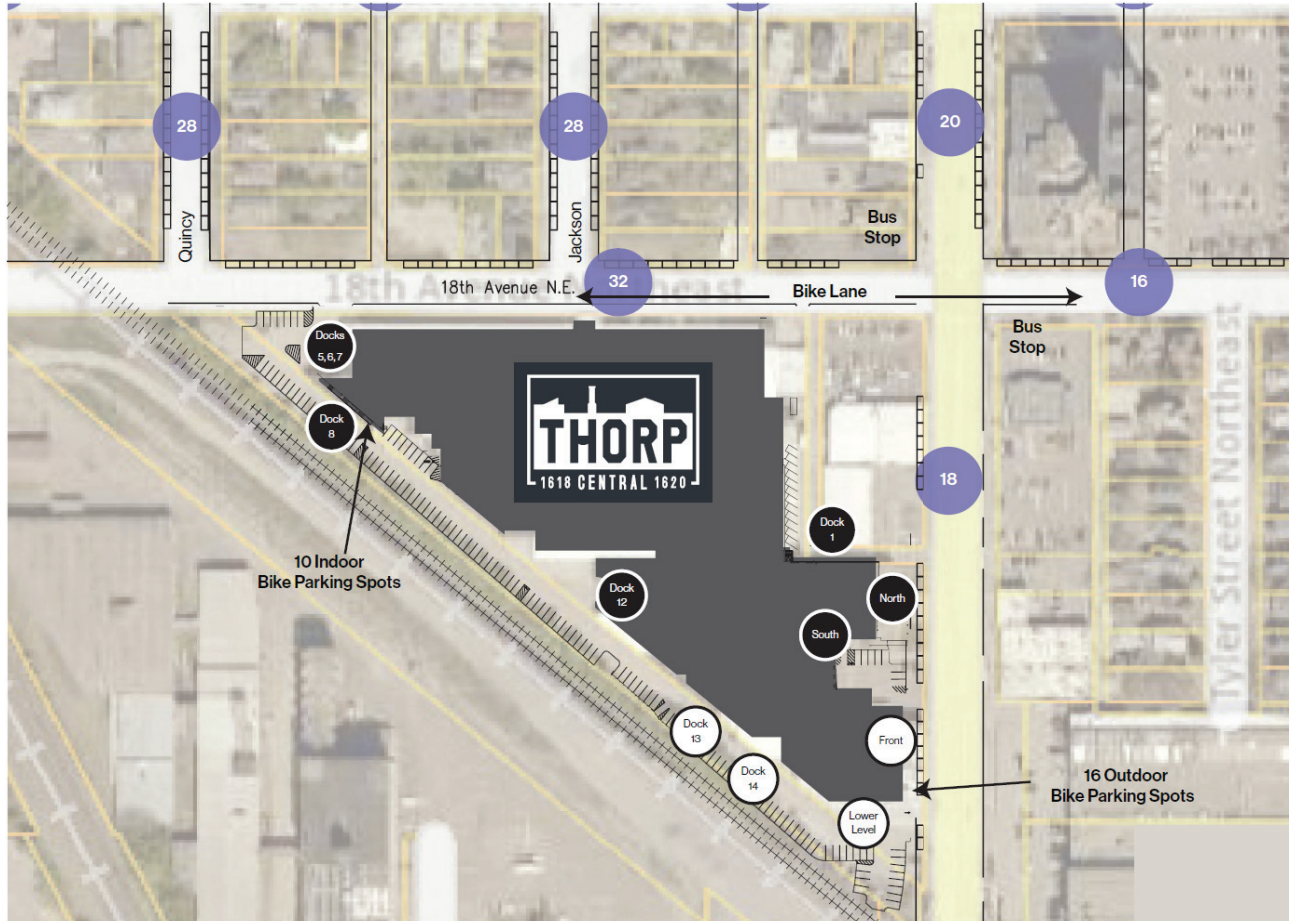
Floor Plan



Space Location in the Building



On-Street/Off-Street Parking



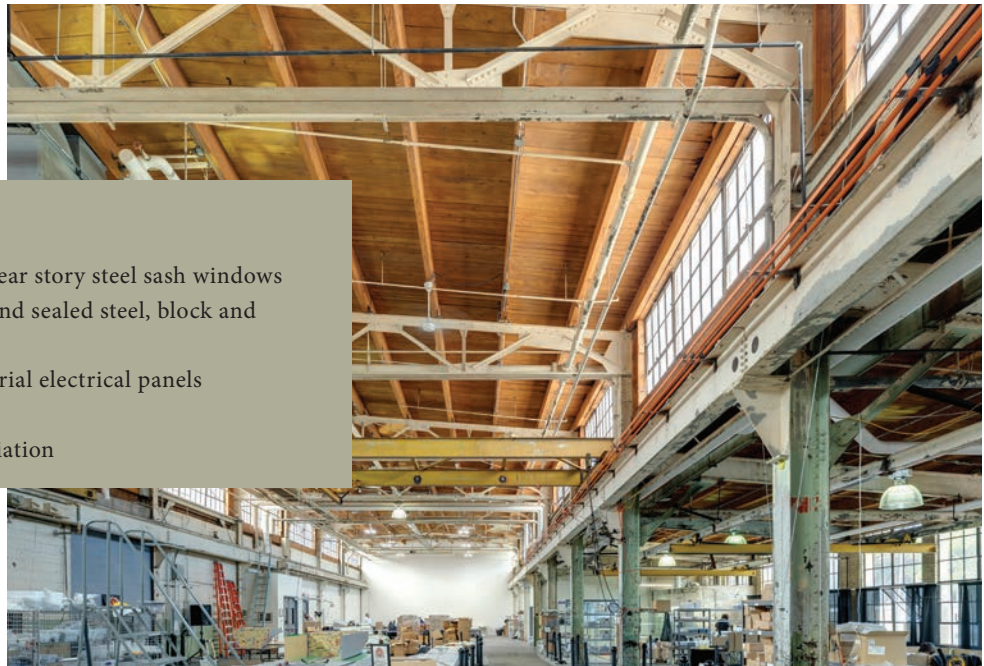
Approximately 335 on-street spots in blue divided by 2 = 167 within 2 blocks
(Divided by 2 to account for other parkers and a range of viable spots).

Renovations at the Thorp Building

Preserving the patina and memory of the past uses



Before



After

- Renovated operable clear story steel sash windows
- Hot water degreased and sealed steel, block and bridge cranes
- New bolt down industrial electrical panels
- New RTU's
- Environmental remediation

Renovations at the Thorp Building

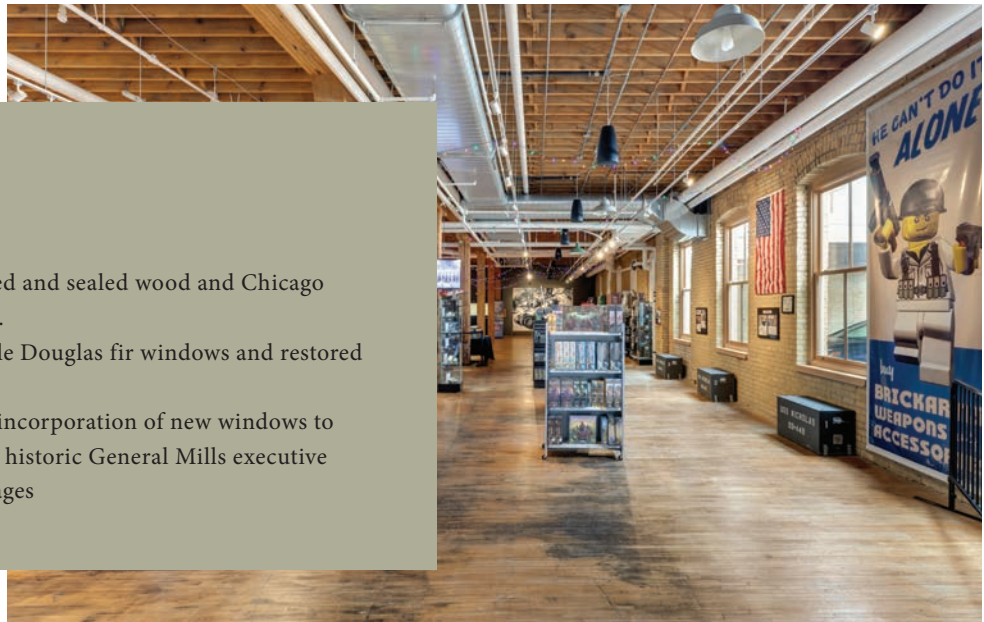


Art Gallery

- Environmental remediation
- Steam pipe and return replacement for efficient and comfortable operation.
- New walls and doors.

Retail

- Media blasted and sealed wood and Chicago yellow brick.
- New operable Douglas fir windows and restored openings
- Thoughtful incorporation of new windows to preserve the historic General Mills executive parking garages



Renovations at the Thorp Building



Facade Restoration and new operable windows

- Demolition of non-historic block structure
- Restoration of brick columns and store front new entrance
- Muntin alignment to integrate with historic metal sash windows



Exterior



Interior

Renovations at the Thorp Building



Restored chimney with lightening protection

New private entrances



Renovations to Suite

Tattersall Cocktail Room and Distillery



Base Building Work

- New roof
- Sandblasted wood and brick
- Restored metal sash operable windows
- Concrete floor crack filling and waxing
- New heavy duty electrical panels



Re-purposing Industrial Equipment

Re-purposed steel tank to a “War Room”



Re-purposed steel tank to a “War Room”

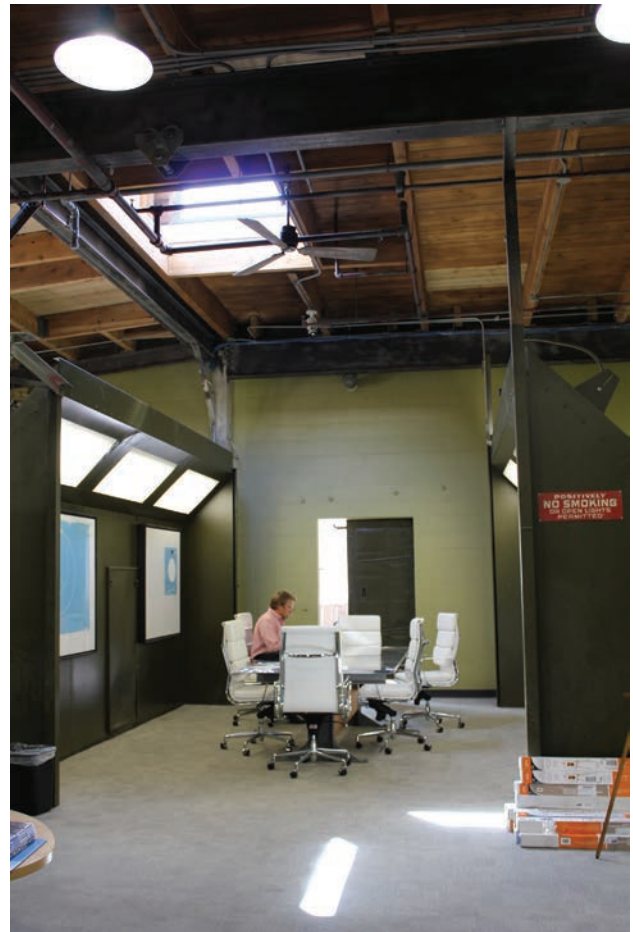
- Carmichael Lynch Minneapolis
- Architecture and Design by MS&R

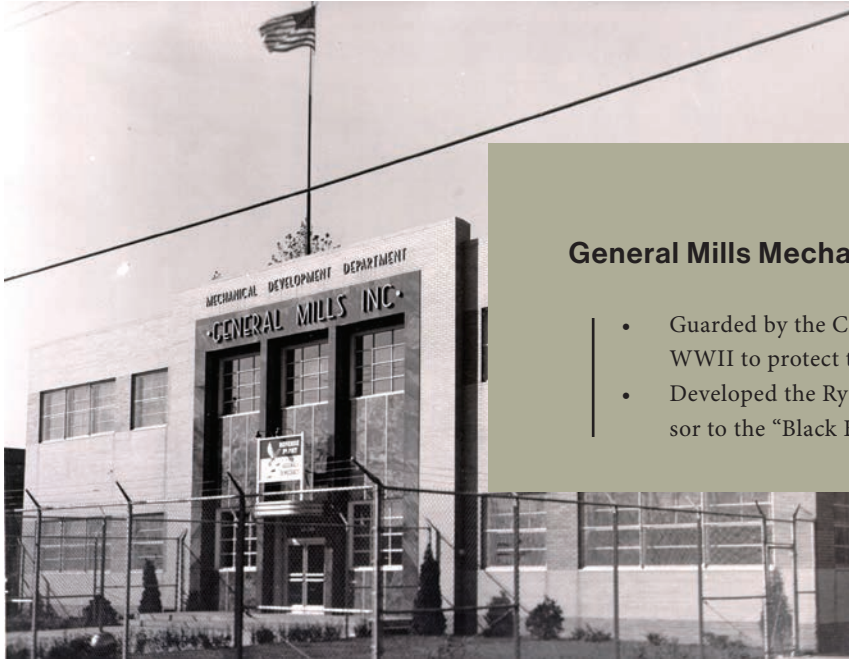


Re-purposing Industrial Equipment



Re-purposed paint oven and a paint booth to conference rooms





General Mills Mechanical Division

- Guarded by the CIA, FBI and US Navy during WWII to protect the Norden Bomb Site.
- Developed the Ryan Flight Recorder the precursor to the “Black Box”

Thorp Fire Proof Door



Rich History



Northern Pump Company

- Original builders and user of the north side of the present day Thorp Building footprint making pumps and battle ship guns for the US Navy.



Exterior Photos



Exterior Photos

