

# Creative Space Available

1,869 SF

1618-1620 Central Ave NE  
Minneapolis, MN



# BÖHM

COMMERCIAL REAL ESTATE

For information contact:

Jon Sander, MBA, CCIM, CPM  
612-788-9770  
[jon.sander@bohmcree.com](mailto:jon.sander@bohmcree.com)



# Space Features

1,869 Square Feet



# Space & Building Features



## Creative, Light Industrial, Office, Art, Flex Space Rates | 1,869 SF

Annual net/base rate (\$934.50/mo.) \$6.00 PSF

2022 budgeted tax, CAM and general utilities (\$1,087.14/mo.) \$6.98 PSF

**Total (\$2,021.64/mo.) \$12.98 PSF**

**+ Trash/Recycling (\$40.00/mo./90 gal)**

## Space: Architectural & Renovated Features Included in the Net/Base Rate

- Located on 1st floor
- Concrete floors
- Convenient dock access
- Heavy power
- High ceilings
- Running water
- "As is, where is"
- Tenant improvement allowance available to be amortized over term

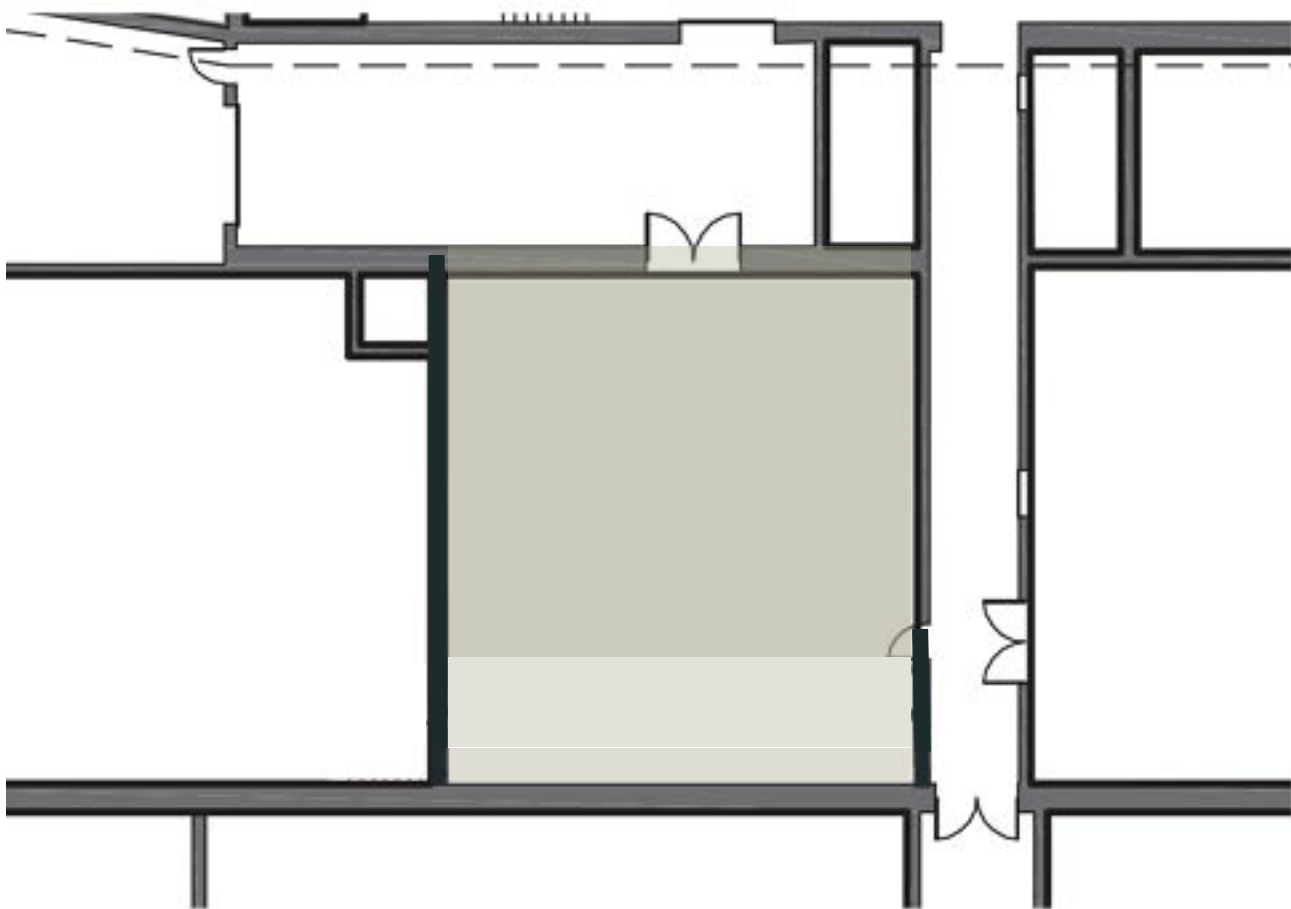
## Building Features

- Diamonds Coffee/Sandwich shop
- Tattersall Cocktail Room & Distillery
- Bodies by Burgoon - Torque Cycling, Yoga & Fitness Studio
- MN Climbing Co-Op - Bouldering & Climbing Walls
- Northeast Tool Library
- 250,000 square foot building
- On Central Avenue NE
- Birthplace of Art A Whirl
- Heavy floor loads
- Fully fire sprinkled with new sprinklers heads, all new risers and new smart system, monitored 24/7
- Fiber to Denmark - 2 carriers : Century-link and Comcast
- New building electrical service
- New 240v/120v industrial grade electrical panels
- 480v/240v/208v
- In the heart of the Northeast Minneapolis Arts District

## Building Services

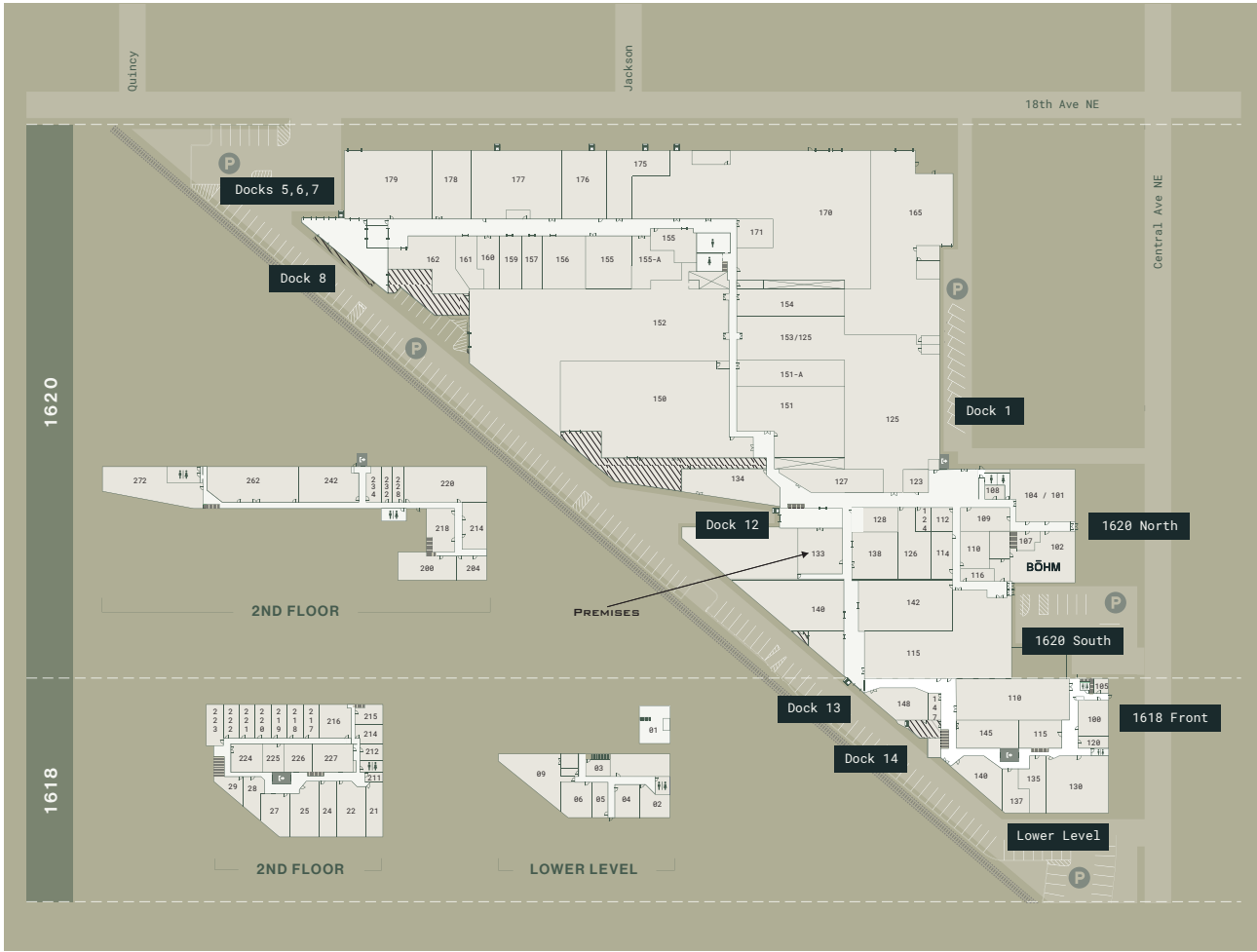
- Built to suit & renovation services coordinated by Bohm CRE, LLC
- Professionally managed and maintained by Bohm CRE, LLC
- On-site maintenance and management
- Weeknight common area janitorial
- Professional security patrol service

# Floor Plan

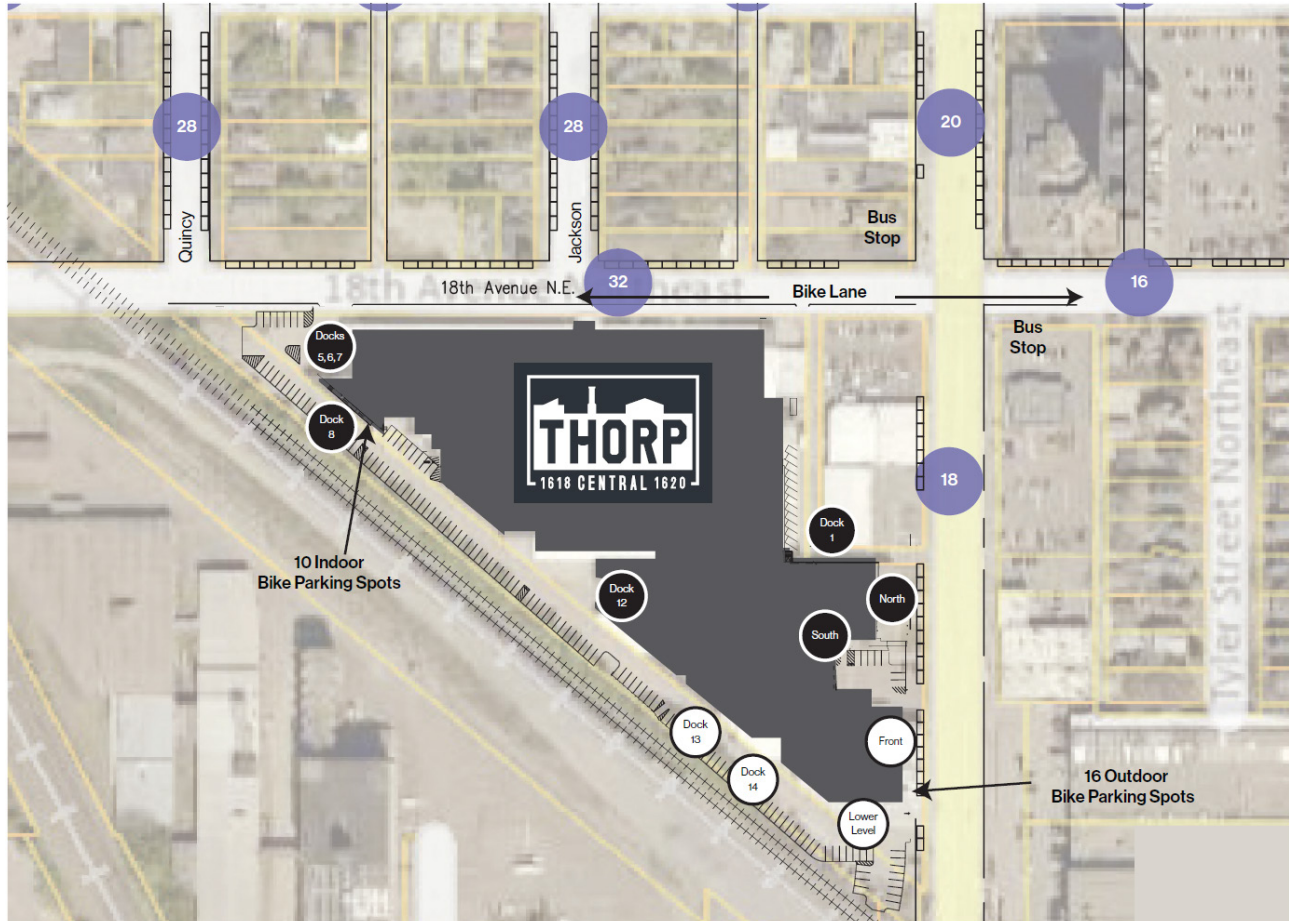




# Space Location in the Building



# On-Street/Off-Street Parking



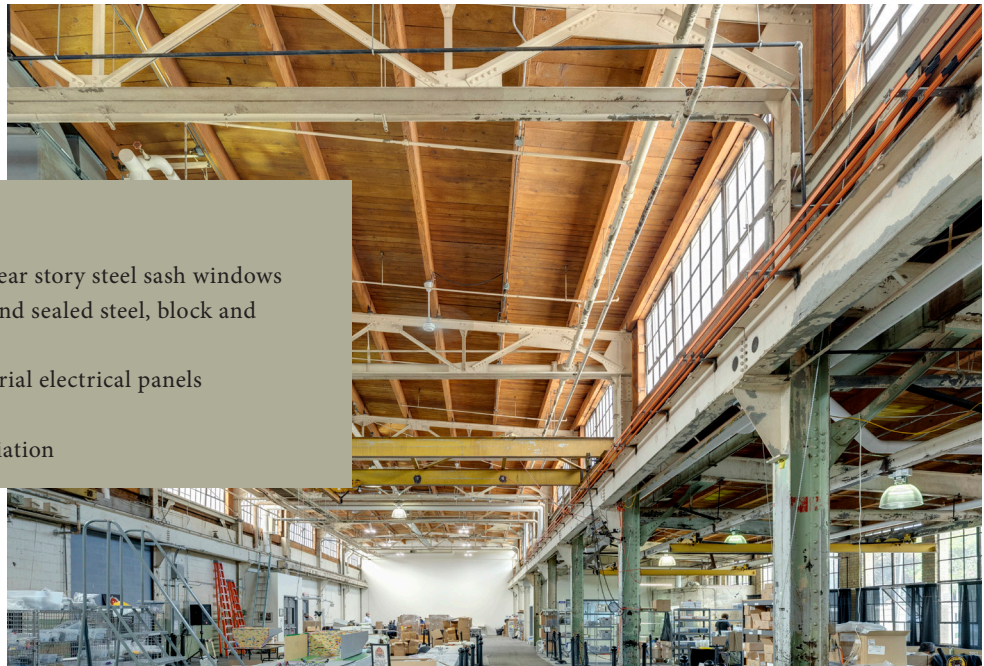
Approximately 335 on-street spots in blue divided by 2 = 167 within 2 blocks  
(Divided by 2 to account for other parkers and a range of viable spots).

# Renovations at the Thorp Building

Preserving the patina and memory of the past uses



Before



## After

- Renovated operable clear story steel sash windows
- Hot water degreased and sealed steel, block and bridge cranes
- New bolt down industrial electrical panels
- New RTU's
- Environmental remediation



# Renovations at the Thorp Building

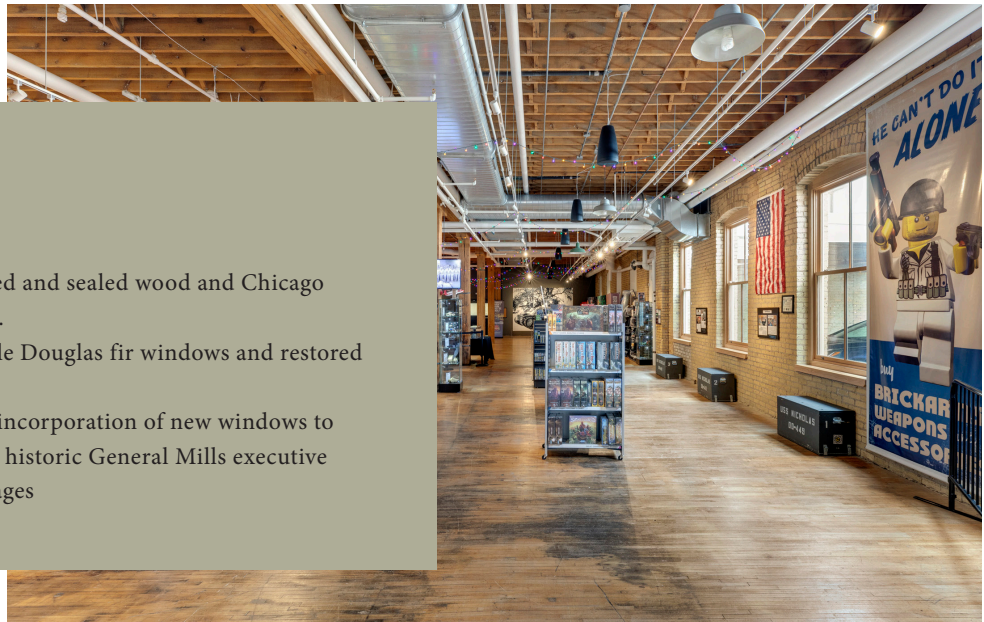


## Art Gallery

- Environmental remediation
- Steam pipe and return replacement for efficient and comfortable operation.
- New walls and doors.

## Retail

- Media blasted and sealed wood and Chicago yellow brick.
- New operable Douglas fir windows and restored openings
- Thoughtful incorporation of new windows to preserve the historic General Mills executive parking garages





# Renovations at the Thorp Building



## Facade Restoration and new operable windows

- Demolition of non-historic block structure
- Restoration of brick columns and store front new entrance
- Muntin alignment to integrate with historic metal sash windows



Exterior



Interior

# Renovations at the Thorp Building



Restored chimney with lightening protection

New private entrances





# Renovations to Suite

Tattersall Cocktail Room and Distillery



## Base Building Work

- New roof
- Sandblasted wood and brick
- Restored metal sash operable windows
- Concrete floor crack filling and waxing
- New heavy duty electrical panels



# Re-purposing Industrial Equipment

Re-purposed steel tank to a “War Room”



## Re-purposed steel tank to a “War Room”

- Carmichael Lynch Minneapolis
- Architecture and Design by MS&R

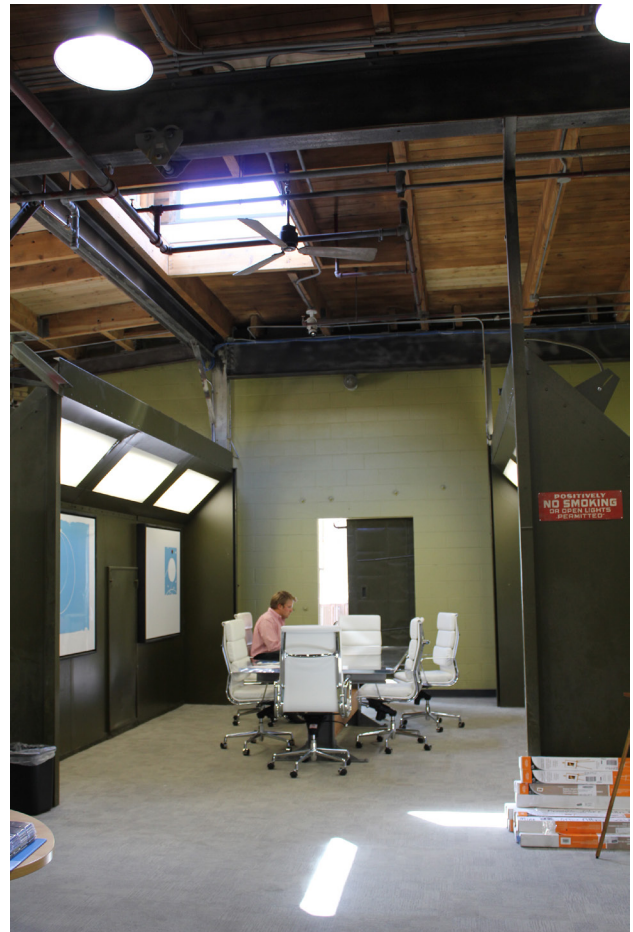




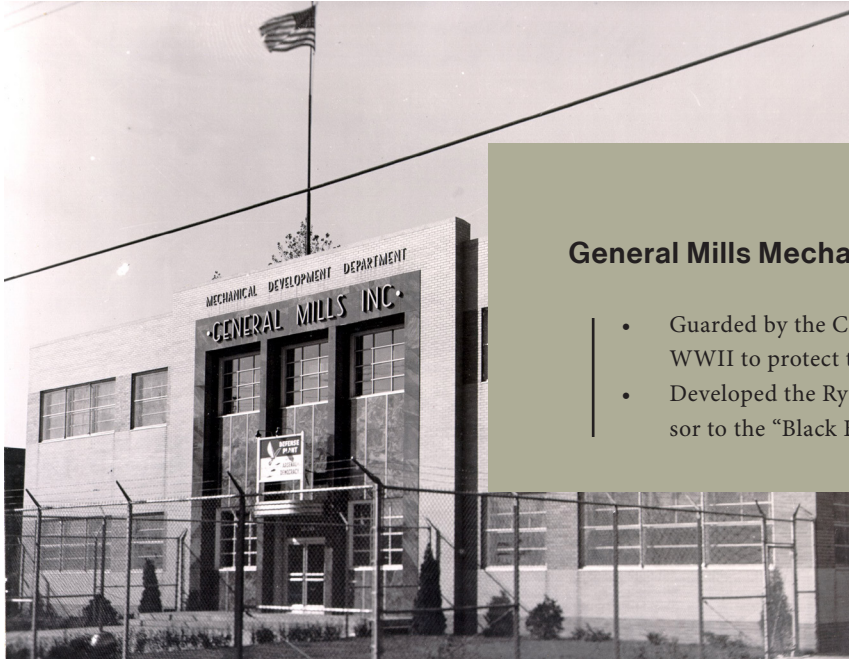
# Re-purposing Industrial Equipment



## Re-purposed paint oven and a paint booth to conference rooms



# Rich History



## General Mills Mechanical Division

- Guarded by the CIA, FBI and US Navy during WWII to protect the Norden Bomb Site.
- Developed the Ryan Flight Recorder the precursor to the "Black Box"

## Thorp Fire Proof Door





# Rich History



## Northern Pump Company

- Original builders and user of the north side of the present day Thorp Building footprint making pumps and battle ship guns for the US Navy.



# Exterior Photos





# Exterior Photos

