

ELSEVIER

| myhealthtalent.com



■ Tour Philadelphia

■ Returning to Work After a  
Career Break

■ Being a Mentor

# Career Guide

CARDIOLOGY  
PHILADELPHIA, PA

November 2019



The Sydel and Arnold Miller Family Heart and Vascular Institute  
Cleveland Clinic Health System  
Academic Non-Invasive, Invasive Cardiologist



*An opportunity to join the #1 heart care program in the country and a top ranked hospital nationwide per U.S. News and World Report 2019-2020 Best Hospital Rankings.*

#### **Academic Noninvasive and Invasive Cardiologists**

Heart and Vascular Institute at Cleveland Clinic announces its search for BE/BC noninvasive and invasive cardiologists to join our Department of Cardiovascular Medicine in the Section of Clinical Cardiology. Specialized expertise/interest in a cardiac condition/ area is highly desired. This may include specific disease states like sarcoidosis or amyloidosis, or areas of expertise like conduct of clinical trials, cardio-oncology etc.

Cardiologists in the Clinical Section collaborate with our talented team of subspecialists and our outstanding Cardiovascular surgeons to manage and deliver impactful and outstanding care to patients with complex cardiac conditions in both the inpatient and outpatient setting. The position will provide opportunity for clinical and research productivity with a goal of attaining both national and international prominence. The ideal candidate will also be a passionate educator with a desire to contribute and mentor our highly accomplished fellowship trainees. The candidate will be an ambitious, motivated, physician who is committed to contributing to the growth and long terms goals of the department.

#### **General Cardiologists**

The world class cardiovascular medicine program at Cleveland Clinic is seeking candidates for Non-Invasive, Invasive Cardiologist to join our established and highly respected health system. Dynamic positions combine outpatient clinical care with inpatient services at our state of the art facilities in the Greater Cleveland area. The Cleveland Clinic Health System includes 11 hospitals and over 180 outpatient facilities in Northeastern Ohio. The Cleveland Clinic Health System are all tertiary referral and teaching centers in close proximity to Cleveland Clinic Main Campus.

Opportunity to develop a rewarding practice while benefiting from these key features:

- New and enhanced facilities with comprehensive cardiac services
- Ability to perform cardiac catheterization, echocardiography, stress testing, and TEE
- Cleveland Clinic Heart and Vascular Institute, adult Cardiology and Cardiothoracic Surgery program has been ranked 1st in the nation by U.S. News & World Report for more than 20 years
- Development of community expansion and outreach
- Newly remodeled cardiac catheterization suite with state of the art imaging and ultrasound technology

Interested parties should apply online at <https://jobs.clevelandclinic.org/physicians.html>

The same vitality that permeates the Cleveland Clinic extends to life in Greater Cleveland. Cleveland is a vibrant metropolitan area with comfortable and affordable housing, professional sport teams, internationally reputed cultural institutions, and offers top rated public and private schools and universities.



# Contents



4

**Philadelphia** is well known for its history and museums. Take a tour to explore the City of Brotherly Love.

10

Discover the challenges of **Returning to Work After a Career Break**.



16

Learn more about **Being a Mentor**.





# Tour Philadelphia

## Enjoy the city of brotherly love's natural beauty and museums

**P**hiladelphia, the City of brotherly love, located in Pennsylvania, is well known for its historical significance in America's founding, its museums and "Philly" Cheese steak sandwiches. There is plenty for visitors to do here. Visitors to Philadelphia can walk to most attractions, especially those in Center City. An extensive subway network, trolleys, and a regional rail system (subway tickets start at \$2.25 per ride) connects the city. Both the high-speed rail station and international airport are close to Center City and are accessible via public transportation.

### Independence National Historical Park (INHP)

The site of many historic events that shaped the course of history for this nation, the Independence National Historical Park is a delightful place to visit for both adults and children. One of the park's most famous attractions is the Liberty Bell. Recognizable for its crack, the Liberty Bell remains significant today for its message of liberty (freedom). The glass windows that overlook the park provide views of Independence Hall.

Independence Hall is a must-see attraction in the INHP. It is home to the creation and signing of the Declaration of Independence and the Constitution. Independence Hall is one of only 23 World Heritage sites in the U.S. Over 750,000 people visited the hall in 2017. There is also the Independence Visitor Center, the go-to place for visitors to the attraction. A great place to learn more about America's history.

**41 N. 6th Street | Philadelphia, PA 19106 | 215-965-2305**  
[nps.gov/inde/index.htm](https://nps.gov/inde/index.htm)

### Longwood Gardens

Spend a day at this horticultural attraction, with 1077 acres of gardens, woodlands, and meadows. There are 20 outdoor

gardens, 11,000 specimens of plants as well as meadows and woodlands.

Longwood Gardens debuted the Main Fountain Garden in 2017 with 1,700 jets and spectacular 175 feet high air streams. Prior to its reopening, it was closed for two years of restoration works.

**1001 Longwood Road | Kennett Square, PA 19348 | 610-388-1000**  
[longwoodgardens.org](http://longwoodgardens.org)

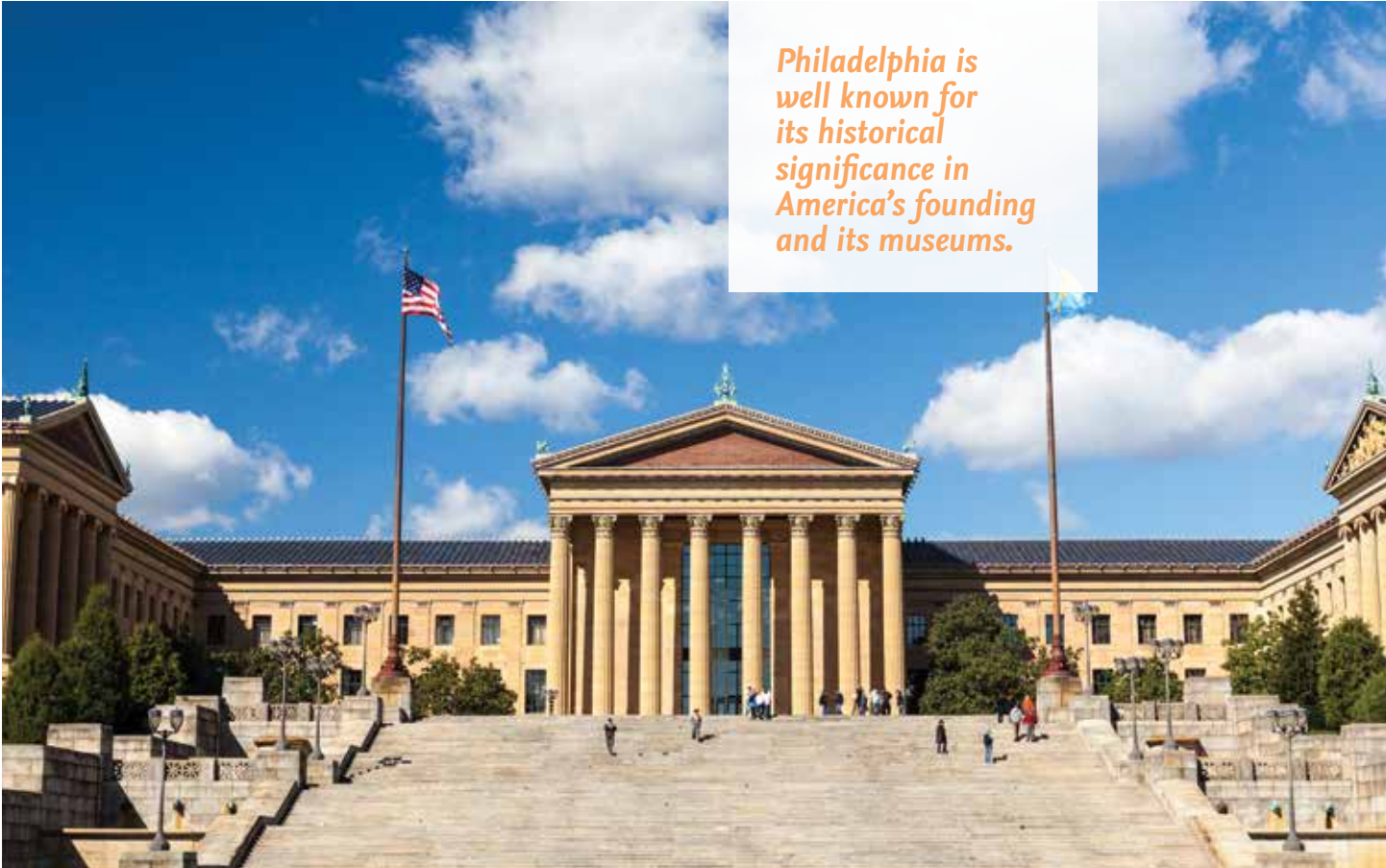
### Philadelphia Zoo

The Philadelphia Zoo is an animal lover's delight for both the young and old. Zoo360 features the world's first system of see-through mesh trails that cross over pathways. Here, you can connect habitats and encourage animals to travel and explore the entire campus. Other highlights of the zoo include: Key Bank Big Cat Falls, PECO Primate Reserve and KidZooU, a wildlife academy of dynamic displays, rare breeds and hands-on experiences for children. Last year, the Philadelphia Zoo received about 1.1 million visitors.

**3400 W Girard Ave. | Philadelphia, PA 19104 | 215-243-1100**  
[philadelphiazoo.org](http://philadelphiazoo.org)

### The Franklin Institute

The Franklin Institute showcases the science involved in every aspect of life - from sports to space and beyond. The facility is one of the leading science centers in the country and a well-known educational and cultural resource for Philadelphia. In addition to the Institute's 11 hands-on permanent exhibits, there is also a roster of special exhibitions. The Giant Heart is a walk-through human corpuscle that would fit a person 220 feet tall! Other exhibits include Your Brain and the newly reimagined SportsZone.



*Philadelphia is well known for its historical significance in America's founding and its museums.*

The science center is also home to the Fels Planetarium, the Tuttleman IMAX® Theater and the Joel N. Bloom Observatory.  
**222 North 20th Street | Philadelphia, PA 19103 | 215-448-1200**  
[fi.edu](http://fi.edu)

### **Philadelphia Museum of Art**

The Philadelphia Museum of Art has a body of work that is a must-see for art lovers and an important destination for art enthusiasts all around the world. Forever immortalized in the classic Rocky film franchise, this attraction showcases an impressive art collection -- Renaissance, American, Asian, impressionist and contemporary masterpieces - from all around the globe.

The “Rocky Steps” are a popular draw for visitors who want to reenact Sylvester Stallone’s famous on-screen training regimen.  
**2600 Benjamin Franklin Parkway | Philadelphia, PA 19130 | 215-763-8100**  
[philamuseum.org](http://philamuseum.org)

### **Reading Terminal Market**

The Reading Terminal Market is one of America’s largest and oldest public markets. A gastronomic delight, the market is housed in a National Historic Landmark building and has been since 1893. This indoor gourmet paradise offers a wide selection of locally grown fruits and vegetables, locally sourced meats and poultry and delicacies from Asia and the Middle East. There are

also Amish specialties, plus the finest seafood, cheeses, baked goods, and confections.

Those who love to eat and create food will find everything they need to make a memorable meal: from cookbooks, to kitchenware and then some. For those who just love a great meal prepared for them, Reading Terminal houses a wide variety of restaurants.

**51 North 12th Street | Philadelphia, PA 19107 | 215-922-2317**  
[readingterminalmarket.org](http://readingterminalmarket.org)

### **National Constitution Center**

Dedicated to the U.S. Constitution, visitors to the National Constitution Center can begin their journey with Freedom Rising, a 17-minute, live theatrical production about the American quest for freedom. Visitors can then explore the museum’s interactive main exhibit, The Story of We the People. There is also an opportunity to get your picture taken with the Founding Fathers in Signers’ Hall, featuring 42 life-sized statues of the men who were present for the historic signing of the Constitution.

**525 Arch Street | Philadelphia, PA 19106 | 215-409-6600**  
[constitutioncenter.org](http://constitutioncenter.org)

### **Please Touch Museum**

For families with children, the Please Touch Museum in Fairmount Park’s National Historic Landmark Memorial Hall, offers play-based learning experiences across more than 60,000 square feet of interactive exhibits. General entrance fees

include admission to special temporary exhibits, hands-on daily programming, original theatrical performances, and art-making creative spaces.

4231 Avenue of the Republic | Philadelphia, PA 19131 | 215-581-3181  
pleasetouchmuseum.org

### Barnes Foundation

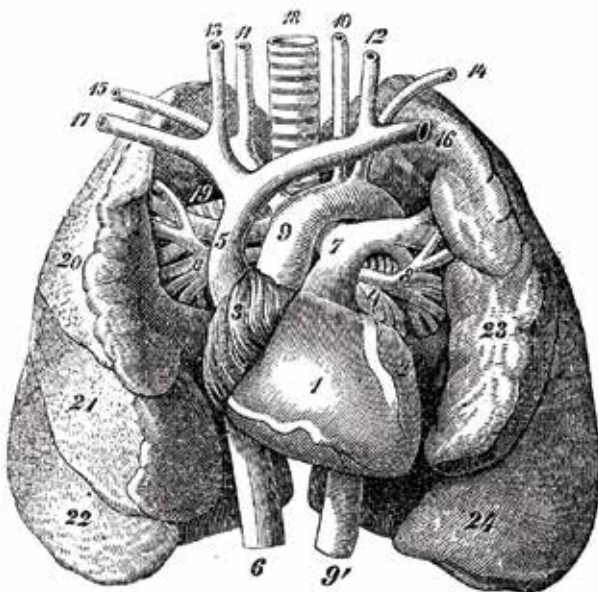
Located on Philadelphia's Benjamin Franklin Parkway, the Barnes Foundation houses one of the finest collections of impressionist, post-impressionist and early modern paintings in the world. The foundation owns more than 4,000 objects, including 900 paintings worth about \$25 billion. Its collections include 181 Renoirs, 69 Cézannes, 59 Matisse's and 46 Picassos. It also boasts works by Van Gogh, Monet, Manet, Degas, Seurat and Modigliani. The impressive collection includes not only American paintings but African sculpture and Native American textiles, jewelry and ceramics. All exhibits are presented in distinctive arrangements in 26 intimate rooms fashioned in the style of Dr. Albert C. Barnes, an artist, art collector and inventor.  
2025 Benjamin Franklin Pkwy | Philadelphia, PA 19130 | 215-278-7000  
barnesfoundation.org ■



## Full-Time Cardiology Physicians

Specialty Physician Group, LLC in Memphis, TN. Seeks Full-Time Cardiology trained Physicians. Requires include completion of Cardiology and/or Cardiovascular Fellowship training from ACGME accredited program. Must be BC/BE in Cardiology with TN and/or MS Medical License(s).

For consideration, please email CV to:  
Stephanie.Wright@mlh.org



**Central Vermont Medical Center**, a partner in the University of Vermont Health Network, is recruiting for a full-time BC/BE non-invasive **Cardiologist** to join our team of 4 physicians and 3 Nurse Practitioners. Located in the heart of the Green Mountain state, CVMC has a reputation of clinical excellence with a staff that is deeply rooted in our community.

We have attracted and retained a very talented medical staff due to our focus on lifestyle and professional growth.

We are looking for a physician who wants to work in an area where you can have a long, sustainable career, opportunities for leadership development and enjoy the special lifestyle that comes with living in Vermont. **Generous benefit package includes assistance with student loans.** J1 candidates will be considered.

Contact Sarah Child, Manager of Physician Services  
(802) 225-1739 | [sarah.child@cvmc.org](mailto:sarah.child@cvmc.org)

THE  
University of Vermont  
HEALTH NETWORK  
Central Vermont Medical Center





*Enjoy the low cost of living in our family-oriented community with an MSA of 350,000 and quick access to Madison, Chicago, and Milwaukee. The Rockford area offers superb restaurants, theater, symphony, and museums, along with exceptional golf courses, endless bike trails, and an award-winning park district. Excellent private, parochial, and public school options including the Renaissance Gifted Academy with graduates ranked in the top 5% nationally.*

**SWEDISHAMERICAN**  
**A DIVISION OF UW HEALTH**  
[www.swedishamerican.org](http://www.swedishamerican.org)

# Electrophysiologist

**SwedishAmerican Heart Institute** seeks a BE/BC Electrophysiologist to expand our 13-member team. The Heart Institute provides dedicated and unopposed support to the 220+ employed providers of **SwedishAmerican Medical Group**. Our group provides an unparalleled practice and benefits including:

- Hospital practice limited to **SwedishAmerican Heart Hospital**
- Onsite clinic with five state-of-the-art cath labs
- Starting salary guarantee of \$600,000
- Call 1:7/8
- Six weeks of paid time off
- Comprehensive, family-friendly benefits including health, dental, life, and malpractice insurance
- Academic appointment and teaching available with **University of Illinois College of Medicine at Rockford**
- Quick access to **Chicago, Madison, and Milwaukee** with low small-town cost of living

For more information or to submit your CV and cover letter for consideration, please contact Jessica Marquez at:

**[jmarquez@swedishamerican.org](mailto:jmarquez@swedishamerican.org)**



# Interventional Cardiology

Call This "Top 10" Community Home

McFarland Clinic is seeking a BE/BC Interventional Cardiologist to join our extraordinary team and provide exceptional care within Iowa's largest multidisciplinary clinic. Consistently ranked in the top 10 "Best Places to Live" by Money Magazine and CNNMoney.com, this thriving town has been ranked in the top 3 cities in the country for job growth.

- Technologically-advanced Cath Lab and office suites
- Flexible practice and call schedule
- Large, established referral network
- Physician-owned and governed
- One of the least litigious states in the country
- #1 Best State to Practice Medicine – WalletHub

**Contact Doug Kenner**  
866-670-0334  
dkenner@mountainmed.net



EOE/AA Employer/Protected Vet/Disabled

Ames, Iowa is a family friendly town that offers top-quality education with the best school district in the state. Home to Iowa State University, this Big 12 city has been voted the "Best College Town" by Livability.com. Our proud community boasts the cultural, recreational, and entertainment amenities of a big city while maintaining the charm that you have come to expect from small-town living. Become part of Ames, a place that will quickly become your hometown.



Extraordinary Care, Every Day

## Career Guide

A powerful and effective recruitment solution that reaches top healthcare talent through the industry's key society conferences and myHealthTalent.com.

**Reach both active and passive job seekers to fill your position quickly and effectively.**

**Contact**  
Ariel Medina  
a.medina@elsevier.com  
212-633-3689  
to reserve your space!





# Cardiovascular Medicine – Heart Failure

## Beaumont Hospital Royal Oak

The Beaumont Max & Debra Ernst Cardiovascular Center is a new, state-of-the-art on-campus clinic designed for treating complex heart failure patients. The Beaumont, Royal Oak campus is developing an advanced heart failure program, including an outpatient clinic and inpatient unit, which serve as the foundation for a surgical LVAD program. Beaumont is seeking a board-certified heart failure specialist to drive program development and growth through close partnership with other employed cardiologists, cardiothoracic surgeons and supporting service lines. Heart failure clinic and inpatient unit are new to campus and health system. Seeking candidate who is interested in driving establishment of best practices, program development and growth, and partnership with cardiothoracic surgery to open a surgical LVAD program. Inpatient Rounding—frequent, heart failure-specific. Weekend Rounding 5-6 weekends per year. 10-15 patients/day in clinic, rounding to 15+ heart failure inpatients, 2-3 cath procedures/day for procedural days (if desired). Two physicians will be based in clinic (one to start), rounding schedules shared with other hospital-employed cardiology clinics, several 'visiting' physicians in clinic for specialty programs. Currently 1 APP growing to 2 APPs supporting practice, plus the hospital-provided clinical resources for supporting patient flow for procedures and acute post-procedure follow-ups and discharges. Types of procedures and cases include Cardiac Catheterization, CardioMEMS Implant, Impella, ECMO available, eventual establishment of surgical LVAD program.

Physicians joining the Cardiovascular Team will also be appointed to the faculty of the Oakland University William Beaumont School of Medicine.

### EDUCATION, KNOWLEDGE & EXPERIENCE

- Board Certified in Heart Failure
- 5+ years post-advanced fellowship experience
- Must have strong interpersonal and organizational skills, a persuasive communicator who is empathetic and a respectful listener who can create an atmosphere that allows individuals to flourish within the context of the department.

### OTHER QUALIFICATIONS

- Fostering team work (relationship management, build teams)
- Results Orientations (bias for action)
- Influence skills (communication)
- Establishing focus
- Customer orientation
- Strategic thinking
- Clinical education

Salary: Competitive, commensurate with experience. Excellent benefits and relocation provided.

To learn more, please send your CV via email to set up a phone interview to: [Amy.anstett@beaumont.org](mailto:Amy.anstett@beaumont.org)



Please visit:

<https://www.beaumont.org/docs/default-source/fact-sheets/beaumont-health-fact-sheet.pdf>

# Returning to Work After a Career Break



There are many reasons why physicians take career breaks. Those reasons can include, as they do for other professionals, home life circumstances such as family leave, personal health or caring for a family member full-time.

Physicians may also take a break from practice for reasons unique to the medical profession; for example, to pursue a research post, undertake charitable work overseas or take an approved leave of absence in support of a national or international activity or organization.

The problem of burn-out, while not unique to physicians, does create another reason for physicians to step away from medicine. A 2016 survey for The Physicians Foundation's Survey of America's Physicians found 49 percent of respondents said they often or always experience feelings of burnout.

Whatever the circumstances that led to the career break, physicians can face tough challenges re-entering the profession.

Part of the reason physicians face such challenges when re-entering the profession is because of the lack of national standards or guidance for returning physicians. The AMA has worked with the Federation of State Medical Boards and the American Academy of Pediatrics to promote consensus and drive national standards and processes around physicians returning to work after a career break.

However, the picture remains very patchy. The AMA has found that only 51% of state medical boards have a policy on physician re-entry. Of those that do, different states have different definitions of what constitutes a "career break". And reentry requirements differ widely from state to state.

## Be prepared for a lot of paperwork

At a minimum, it is likely you will need to provide letters of recommendation and complete numerous forms. Further, be prepared to pay various registration fees. Depending on where you live, you may also need to take assessment tests and/or undergo a retraining program or proctorship.

## If you can, plan ahead

If possible, physicians contemplating a career break should make themselves aware of reentry regulations in their state (or state of likely reentry to the profession) before taking a break. This means forethought when initially making the break, so that during your break you can continue with activities that will help you reenter the profession when you are ready to do so. This can involve several hundred dollars per year and time spent taking Continuing Medical Education (CME) courses to keep your license current. While this might not be possible for physicians taking unexpected breaks or working abroad, for those taking a career break to care for relatives or raise children, it may be possible to maintain licensure and keep up to date with continuing professional education. However, even then, the path isn't always as straight-forward as, perhaps, it ought to be.

## Consider paying for a return to work program

Not only do you need to demonstrate your competence to the medical board and any potential employers, you need to satisfy



*Returning to work after a hiatus poses a problem in the medical field, even if you have planned ahead, retained your license and continued professional development courses.*

yourself that you are ready to return. Taking advantage of formal reentry programs can make the transition back to practice much smoother – both practically and emotionally. However, these programs also require significant forward planning. Programs typically last 6 months or more and can cost upwards of \$5k - \$10k.

There are a growing number of opportunities available around the country to help physicians make the transition. The AMA-backed Physician Reentry to the Workplace Project offers useful guidance if you want to take this route back to practice.

As well as giving you much-needed confidence, and potentially satisfying your local medical board, adding such a program to your CV can help to alleviate any concerns potential employers might have – especially those focused on patient safety – when considering interviewing a physician who is returning to work after a significant break.

### Finding the right role

While taking a career break doesn't have to mean the end of your medical career, it is, nonetheless, important to recognize that things aren't going to pick up where they left off.

Be realistic when looking at positions. While there is no harm applying for positions at the same seniority as you had at the beginning of your break, you should also consider – and be prepared to accept – a more junior role. What's more, you should be prepared that any roles you are offered may be contingent upon you undertaking a retraining program, perhaps at your own cost.

### Work part-time

Continuing to work in some form of part-time practice is the best way to avoid many of the headaches associated with reentry. A part-time position is also a great way to ease yourself back into work gradually. Working part-time has many advantages, giving you the time to combine part-time work with study and other programs required to refresh your skills and update knowledge.

Even if part-time work isn't your long-term goal, consider applying for part-time positions as a way to reenter practice. It opens up more opportunities for you and it's worth remembering that part-time positions can often become full-time positions.

### Your CV: Focus on the positives

When it comes to applying for a suitable role, keep your time out of the profession to a single line on your CV. You need to be honest about time spent out of practice, but your CV isn't the place for protracted explanations. One line with the dates and a concise description is enough.

Use your cover letter – or your interview – to expand on your reasons for the break and, most importantly, your desire to return to practice.

### The interview: prepare to deal with objections

In an article in the *New York Times*, Pauline W. Chen, M.D. talks about a deep-seated reluctance in the profession to admit to



taking career breaks. Chen suggests that, despite record numbers of doctors choosing to take time off, there is still a stigma in medicine around taking career breaks. It is therefore important to prepare how you are going to talk about and answer questions about the time you have spent out of the profession.

The best way to challenge and overcome any possible stigma is to be open about your reasons for choosing to take the career break and the particular challenges you were facing. You don't need to give excessive detail about time spent outside the profession, unless it is pertinent to your professional skills, so if you find the conversation veering in this direction, refocus the discussion onto your reasons for wishing to re-enter the profession and your qualifications for doing so.

The best way to counter objections is to demonstrate your professional skills and experience and to genuinely express your drive and desire to reenter medicine.

It can be difficult to reestablish your career after a significant break. A lot will depend upon your personal circumstances and where you live, but resources are available to help you. For further information, check out the AMA Physician Reentry to the Workplace Project resources as a starting point.

Whatever your personal circumstances, however, one thing is clear: patience and determination are going to be your two greatest assets as a physician seeking to return to practice. ■

#### Sources

*Fat Sheet on Physician Reentry*, [American Medical Association](#)

*Physician Reentry Regulations*, [American Medical Association](#)

*When the Doctor Returns to Doctoring*, Pauline W. Chen. (Jan. 10, 2013) - [The New York Times](#)

*Issue Briefs: Schema for a Reentry Educational System*, (Jan 23, 2013) - [Physician Reentry](#)

*A Physician Reentry into the Workforce Inventory*, The Physician Reentry into the Workforce Project (June 4, 2015) - [Physician Reentry](#)

*For Doctors Who Take A Break From Practice, Coming Back Can Be Tough*, Anna Gorman. (June 15, 2015) - [Kaiser Health News](#)

*How to: Explain a gap in your CV*, Michael Cheary. - [Reed.co.uk](#)



## CARDIOLOGISTS WANTED IN BISMARCK, ND

**Best Place to Work.**

**Best Place to Heal.**

*We are CHI St. Alexius Health, a heritage brand.*

CHI St. Alexius Health is the region's largest health system serving the needs of residents throughout North Dakota. CHI St. Alexius Health Bismarck was voted Best Hospital by US News & World Report and several other awards for quality care. We are actively seeking Cardiologists to join our busy and expanding regional health system.

- BC/BE
- Ability to obtain an unrestricted ND medical license
- Share our commitment to service, organization values and professionalism, and our core values of Reverence, Integrity, Compassion and Excellence.

### Description

- State of the Art Siemens Cath Labs
- Syngo Dynamics Cardiac PACS
- Hospital-Employed
- Call 1:5, covers hospital, after-hours consults and admissions
- Full Time opportunity
- Prefer vascular surgery experience

### Compensation Package:

- Highly competitive salary
- Recruitment incentives

### Benefits Package:

- Matching 403b/457b
- Medical, dental and vision insurance
- Paid time off
- CME stipend
- Paid professional liability insurance with tail coverage
- 100% paid relocation expenses

**Please contact Bruce Robinson at**  
[gbrobinson@primecare.org](mailto:gbrobinson@primecare.org)  
**or call 701-530-8896**





## Where Quality of Life and Quality of Care Come Together

Berkshire Health Systems, an award winning healthcare system, is seeking an accomplished, Board Certified Cardiologist with broad and balanced clinical, administrative and leadership skills to serve as the Chief of Cardiology. This is an exciting opportunity to lead a growing practice, and to expand services in conjunction with Baystate Health, a regional cardiology program with which Berkshire Health Systems has had an established collaborative relationship for two decades. Berkshire Medical Center hosts teaching programs at the medical school and graduate medical education levels, including a long-standing residency program in medicine. Berkshire Health Systems is located in the beautiful Berkshires, a community offering world class quality of life.

The opportunity features:

- AMERICAN HEART ASSOCIATION RECOGNIZED FOR OUTSTANDING CARE: Berkshire Medical Center is recognized with 12 consecutive annual Gold Performance Achievement awards for outstanding performance in the care of patients with Coronary Artery Disease.
- Growing, thriving practice, with a diverse group of cardiologists, including electrophysiology and diagnostic catheterization.
- Cardiology practice is on the forefront of Advanced Cardiovascular Imaging with the latest technology, including Cardiac CT, MR, 3D Echo, Cardiac PET and SPECT with AC. Additionally recent investment in a multimillion dollar state of the art cardiovascular information system allows for both onsite and remote access, unifying all aspects of cardiovascular care.
- Competitive compensation and benefits including productivity option, sign on bonus and relocation support.

At Berkshire Health Systems we understand the importance of balancing work with a healthy personal lifestyle. World renowned music, art, museums, and theaters include Mass MoCA, Tanglewood, and Jacobs Pillow are at your doorstep. The Berkshires offer year round recreational activities from skiing to kayaking. Excellent public and private schools make this an ideal family location.

Contact us for this exciting opportunity:  
Shelly Sweet, Physician Recruitment Specialist, at [msweet@bhs1.org](mailto:msweet@bhs1.org)  
or apply online at [berkshirehealthsystems.org](http://berkshirehealthsystems.org)



## Non-Invasive Cardiologist New England

Exceptional full-time opportunity for a BC/BE non-invasive cardiologist to join a collaborative group of four cardiologists in a well-established practice located in suburban community in beautiful New England.

The ideal candidate will be compassionate and mission-focused with excellent clinical skills and expertise in echocardiography, TEE, and stress echo to deliver quality, patient-centered care. Pacemaker implantation experience would be favored.

### Our practice:

- Includes cardiology services to outpatient, inpatient, consults and ER coverage
- On-site treadmill and ultrasound system
- Instant volume and a large referral network
- Accomplished and collegial colleagues
- Fully integrated EMR with dedicated IT staff
- Accredited out-patient services at community hospital for your patients cardiology and cardiac rehabilitation needs
- Call 1:5
- Located in a brand new ambulatory care center

### Bristol Health Medical Group Offers:

- Attractive salary with productivity and quality bonuses
- Generous amount of paid time off
- Comprehensive array of health benefits
- Retirement savings plan
- Employer paid malpractice coverage
- Relocation assistance provided
- J1 and H1b sponsorship

### Our community is:

- Conveniently located in the center region of Connecticut.
- Safe, family-oriented communities with excellent public and private schools.
- Close proximity to urban living with diverse cultural opportunities including concerts, ballet, theatre, museums and wineries.
- Plenty of surrounding shopping centers, restaurants and movie theatres to visit at your leisure.
- All the joys of New England recreation: fishing, hiking, boating, biking, skiing and snowboarding.
- Easy travel distance to Bradley International Airport.
- Direct access to the Connecticut coastline.
- Easy commute to big cities - only two hours from both Boston and NYC!

For more information about this opportunity, please contact Traci Brown in our Physician Recruitment Office at 800-892-3846 or fax/email your CV to 860-585-3086 or [Tbrown@bristolhospital.org](mailto:Tbrown@bristolhospital.org).



Join a Leading Healthcare System in South Florida



### CARDIOLOGY PHYSICIAN CAREER OPPORTUNITIES

Memorial Healthcare System is expanding and looking for physicians to fill the following positions:

- Chief, Pediatric Cardiology
- Adult Clinical Cardiology

To see full job descriptions and/or to submit your CV for consideration, please visit [memorialphysician.com](http://memorialphysician.com). Additional information about Memorial Healthcare System can be found at [mhs.net](http://mhs.net). Additional information about Joe DiMaggio Children's Hospital can be found at [jdch.com](http://jdch.com).

#### About Memorial Healthcare System

Memorial Healthcare System, located in South Florida, is one of the largest public healthcare systems in the United States. A national leader in quality care and patient satisfaction, Memorial has ranked 11 times since 2008 on nationally recognized lists of great places to work.

Memorial's work environment has been rated by employees and physicians alike as an open-door, inclusive culture that is committed to safety, transparency and, above all, outstanding service to patients and families.

#### About South Florida

South Florida offers a dynamic urban/suburban lifestyle with an abundance of recreational amenities, beautiful beaches, top-rated golf courses, zoos and wildlife refuges, a vibrant arts community and world-class dining. South Florida's high quality of life – including year-round summer weather and no state income tax – attracts new residents from all over the country and around the world.

**LIVE. WORK. PLAY.**

[memorialphysician.com](http://memorialphysician.com)

### Cardiology NP/PA Opportunity in Bangor Maine!

Northern Light Health Eastern Maine Medical Center is seeking a nurse practitioner or physician assistant to join a large, well-established hospital-employed cardiology practice.

- Collegial work environment
- Robust training program for new providers
- Competitive compensation/benefits package
- Generous Student Loan Repayment program

Primary responsibilities include: inpatient and outpatient care and complete diagnostic and follow up services. Candidates must be certified and hold a current Maine license or be immediately eligible for the same. Experience in cardiology preferred. New graduates are encouraged to apply.

#### Why Northern Light Health?

Robust compensation and benefits package

Student Loan Reimbursement Programs

Relocation Bonus

Sign on Bonus

Flexible schedules and exceptional work/life balance

Generous PTO benefits

Leadership and teaching opportunities, if desired

Please submit CV to: [ProviderJobs@northernlight.org](mailto:ProviderJobs@northernlight.org) or 207.973.5358.



**Northern Light** Eastern Maine Medical Center



*Become a part of our legacy and help us build a healthier future!*

**Mercy Clinic**, named one of the top five largest U.S. health systems in 2019, 2018, 2017 and 2016 by **IBM Watson Health**, is seeking **BC/BE Physicians** to join our established groups throughout our healthcare ministry (see map).

#### Our Positions Offer:

- Large, fully integrated health system utilizing EPIC
- Competitive compensation model with professional liability coverage (occurrence – based)
- Comprehensive benefits including health, dental, vision and life insurance (eligible first day)
- Attractive schedules (great work/life balance)
- CME allowance and \$10,000 in relocation assistance
- Not-for-profit organization, 501(c)(3), qualifies for Public Service Loan Forgiveness
- Retirement options with employer matching

**For more information, please contact:**

**Brandon Adkins – Senior Physician Talent Scout**

Office: 417-820-6623 | Cell: 417-279-8571

Email: [Brandon.Adkins@mercy.net](mailto:Brandon.Adkins@mercy.net)



*For available openings visit [mercy.net/careers](http://mercy.net/careers)*  
*Locations Include:*

#### Joplin, Missouri

- Cardiovascular Surgery
- Interventional Cardiology

#### Washington, Missouri

- Interventional Cardiology

#### Fort Smith, Arkansas

- Cardiovascular Surgery

#### Rogers, Arkansas

- Electrophysiology



EEO/AA/Minorities/Females/Disabled/Veterans





## BE/BC Non-Invasive Cardiologist Evansville, IN

**Practice:** Join an established and growing practice at St. Vincent Evansville comprised of 20 physicians and 11 advanced practice providers. Services include a state of the art pediatric and adult cardiology; electrophysiology; and cardiac, thoracic, and vascular surgery services. Optional academic component available.

Expand regional outreach and access to our patients. State-wide service line and continuum of care. Enjoy an excellent work - life balance.

**St. Vincent Medical Group:** Physician-led, multi-specialty medical group serving the southern region of Indiana. Outreach extends into Southern IL and Western KY.

**Community:** Affordable and comfortable living. Strong school systems & universities. Wide range of cultural, recreation and entertainment possibilities. Diverse and engaged medical community.

To learn more, please contact Beth Speer  
Manager, Physician Recruitment  
[beth.speer@ascension.org](mailto:beth.speer@ascension.org)

[ascension.org](http://ascension.org)



UNIVERSITY of MARYLAND  
SCHOOL OF MEDICINE

**Clinical Cardiologist 3-309-991:** The Division of Cardiovascular Medicine at the University of Maryland School of Medicine is recruiting a full-time general cardiologist. The primary focus will be ambulatory outpatient and inpatient cardiology at an outreach site, however the position will also include a role in the echocardiography (echo) and teaching programs at the main campus. The individual we seek will demonstrate potential for excellence in clinical care and teaching of cardiology fellows, residents and medical students. Expertise in echo, including TEE and stress echo is required. Experience with 3D TEE for structural interventions is preferred. The ideal candidate would also be certified in nuclear cardiology.

Expected faculty rank is Assistant Professor or higher on a clinical educator pathway, however, final rank, tenure status and salary will be commensurate with the selected candidate's qualifications and experience. The University of Maryland Health System represents a dynamic, regional cardiovascular network that spans the Baltimore and Washington DC capital region, and ranks among the nations very best in cardiac care.

This position requires a MD/DO degree from a recognized accredited university (or foreign equivalent) and candidates must be eligible for an unrestricted Maryland medical license, be board certified in internal medicine and board certified/board eligible in cardiovascular medicine.

For additional questions after application, please email  
[facultypostings@medicine.umb.edu](mailto:facultypostings@medicine.umb.edu)

**When applying, please submit a cover letter, CV and names of four references.**

**Qualified candidates should apply online at the following link:**

**<https://umb.taleo.net/careersection/jobdetail.ftl?job=1900007J&lang=en>**

UMB is an equal opportunity/affirmative action employer. All qualified applicants will receive consideration for employment without regard to sex, gender identity, sexual orientation, race, color, religion, national origin, disability, protected Veteran status, age, or any other characteristic protected by law or policy.

# Being a Mentor



Anyone who has enjoyed the experience of being coached by a sympathetic and knowledgeable mentor knows how special, and beneficial the mentor-mentee relationship can be. There are many powerful reasons to become a mentor.

The main attraction is, of course, helping others just starting out in their careers to excel. Sharing the knowledge you have picked up during your own path can give meaning to your own career trajectory, your self-worth and the value you derive from your job. The mentoring relationship also has an important role to play in mitigating the causes and effects of physician burnout for both parties.

Mentoring holds a special attraction for women and minorities who have advanced in their own careers because they can help promote greater diversity in the medical field by helping young people overcome the challenges they themselves faced.

A good mentor-mentee relationship also provides a valuable opportunity for reverse mentoring; helping the more experienced physician to stay in touch with current thinking and language, discuss new trends in technologies and processes, as well as to build and maintain relationships with the younger generations entering the profession.

## The Qualities of a Good Mentor

Physicians who have risen to the top of their institution or area of clinical expertise will undoubtedly attract a fair number of younger interns and physicians who would like to be mentored by them. This is no guarantee, however, that the physician will make a good mentor.

While reputation is certainly important, the personal and behavioral characteristics of a physician can play an even more significant role in determining the success of a mentor-mentee relationship.

Having an open mind and a willingness to help others succeed are essential characteristics for any mentor. The ability to build a good rapport with students and junior members of staff is also important.


Time management can also be critical - mentors need to be available to their mentee. It can work well if both parties are able to schedule a regular time to meet, listen and talk through their concerns away from the workplace. It is ideal if you can make this a regular occasion; for example, lunch on the first Friday of every month. While making the time might seem like a challenge in an already over-stretched schedule, the benefits that mentoring offers makes finding time well worth the effort.

## Mentoring and Diversity

The mentor relationship offers more than straight-forward technical, clinical and career guidance. Mentors have an important role to play in offering emotional support and guidance. This is certainly true when race and gender come into play. As we've already noted, mentoring has an important role to play in promoting diversity in medicine.

Physicians have to cope with many stressors. Learning to face down racism and/or sexism on top of the other challenges of the job can exacerbate feelings of physician burnout. The support and guidance of a senior staff member who understands these additional challenges can be critical for young medical students.

Writing in STAT, Jennifer Adaaze Okwerekwu relates the story of the racism she experienced during her medical practice. She cites Dr. Sue Taylor, a former medical director of palliative care for Tucson Medical Center in Arizona, who made the



*Mentoring holds a special attraction for women and minorities who have advanced in their own careers because they can help promote greater diversity in the medical field.*

point, “if students targeted by racial aggression don’t see their mentors actively moving to curb racism, that sends a powerful message.” Corporate civility coach, Sue Jacques, suggests that mentors should prepare themselves by creating a guiding set of principles that summarize how you will treat others and how you expect to be treated yourself. She says pre-determining these standards will help you deal with awkward experiences with grace.

### Tips for Mentoring Success

Being a mentor requires you to exemplify model behavior and make good choices, Jacques states. Showing leadership and acting as a role model at all times is part of a senior physician’s responsibility. Emotional capacity is also important to the success of the mentoring relationship. A study by Dunn and colleagues identifies self-disclosure as an important attribute within the relationship.

Perhaps the most important tip for a successful mentoring relationship is to talk about both parties’ expectations of the mentoring relationship from the start. Don’t overpromise or set unrealistic expectations; be open about what you both are able to commit to.

A mentor’s role is to encourage self-empowerment. Depending on which stage a mentee is in their career, the mentor may have a huge potential impact on the development and trajectory of the mentee’s career plans. The mentor’s job is never to direct - but instead, to listen, share their experiences, talk through the options and suggest possibilities, never forgetting that ultimately the mentee has to be responsible for his or her own career.

### Finding a Mentee

Senior physicians at the top of their fields may find themselves approached to be a mentor quite regularly. In these instances, the key to determine who to mentor are those students with whom you have a natural rapport and will be able to create value through your relationship. Some teaching facilities have a program to match interns with senior physicians, so the decision is removed from the physicians’ hands.

If neither of these circumstances apply to you, there are database matching services which can put would-be mentors and mentees in touch with each other. The American College of Physicians (ACP)’s Mentoring Database is a good place to start. The American Medical Women’s Association (AMWA) also operates a mentoring database.

If you don’t have time to commit for an extended period, you may wish to consider reaching out to younger generations before they make the educational choices that will help them pursue a career in Medicine. The Doctors Back to School and Mentoring in Medicine programs reach out, particularly to under-represented black and ethnic minority school age kids, to help open their eyes to the possibility of a career in medicine and encourage much-needed diversity in the profession.

To learn more about becoming a mentor, please visit:

[acponline.org](http://acponline.org)

[amwa-doc.org/doctors/become-a-mentor](http://amwa-doc.org/doctors/become-a-mentor)

[ama-assn.org/content/doctors-back-school-program](http://ama-assn.org/content/doctors-back-school-program)

[medicalmentor.org/about-us](http://medicalmentor.org/about-us) ■



Sources:

*Become a Physician Mentor for Residents*, American Medical Women's Association - [amwa-doc.org](http://amwa-doc.org)

*How Mentors Can Help Young Doctors Prevent Burnout*, Rosalyn E. Plotzker, MD; Medscape (March 9, 2017) - [medscape.com](http://medscape.com)




*Becoming a Physician Mentor*, Sue Jacques; Physicians Practice (Feb 20, 2013) - [physicianspractice.com](http://physicianspractice.com)

*Finding a Mentor in Medicine*, American Academy of Family Physicians; aafp.org

*What happened when I talked about what others ignore - racism in medicine*, Jennifer Adaeze Okwerekwu; STAT (April 27, 2016) - [statnews.com](http://statnews.com)

## ABOUT THE AUTHOR

**Melanie Grano** is a freelance business writer and 20-year Journalism veteran who regularly contributes to career-based publications, including *ThirdCertainty* and *Computer Times*.



### Cardiac Surgeon & Clinical Cardiologist

One of the country's most dynamic health systems with two hospitals (1,227 beds), a Level I trauma center, a comprehensive stroke center and regional centers of excellence in heart and vascular care, cancer care and women's health. CCHS is a not-for-profit teaching health system with 260 residents and fellows continually ranked by US News & World Report as a Best Hospital; 21st in the nation for ED visits, 24th for admissions, and 38th for surgeries.

**Now Hiring a Cardiac Surgeon and a Clinical Cardiologist**

- The Center for Heart and Vascular Health at CCHS saw 1,800 chest pain admissions, performed over 3,000 cardiac catheterizations, 1,400 PCIs, 1,600 EP procedures and 880 cardiac surgical procedures in fiscal year 2018 and opened a new structural heart room in June 2019.

**Cardiac Surgeon:**

- Interest in Mitral Valve Surgery is preferred
- Procedures including coronary artery bypass, aortic and mitral valve repair and replacement, TAVR, TEVAR, Lead Extraction, Mitraclip, ECMO, VAD, complex aortic procedures, and robotic coronary procedures
- CCHS is equipped with a dedicated 18 bed combined cardiology/cardiac surgery ICU staffed with ICU nurses, a 10 bed cardiac step down unit, and 24/7 ICU coverage provided by an experienced surgical advanced practice team
- Call of 1:5

**Clinical Cardiologist:**

- Expertise in lipid management and/or genetic assessment/preventive medicine and management of cardiovascular disorders is required
- The patient population will include complex lipid disorders and those with a suspect or known genetic basis for disease (complex congenital heart disease excluded)
- Diagnose & manage cardiovascular diseases
- Call of 1:4

To learn more, email:  
[Lauren.a.mahaney@christianacare.org](mailto:Lauren.a.mahaney@christianacare.org)  
Christiana Care Health System - Newark, DE 19713



## Where Quality of Life and Quality of Care Come Together

Berkshire Health Systems, an award winning healthcare system, is seeking a Non-invasive Cardiologist to join a growing practice. This is an opportunity to practice at a University of Massachusetts Medical School affiliated teaching hospital located in the beautiful Berkshires, a community offering world class quality of life.

The opportunity features:

- **GOLD STAR CARDIOLOGY PRACTICE:** Berkshire Health Systems is recognized with 12 consecutive Gold Performance Achievement awards for outstanding performance in the care of patients with Coronary Artery Disease.
- **Growing, thriving practice, with a diverse group of cardiologists**, including electrophysiology and diagnostic catheterization.
- **Cardiology practice is on the forefront of Advanced Cardiovascular Imaging with the latest technology**, including Cardiac CT, MR, 3D Echo, Cardiac PET and SPECT with AC. Additionally recent investment in a multimillion dollar state of the art cardiovascular information system allows for both onsite and remote access, unifying all aspects of cardiovascular care.
- **Competitive compensation and benefits** including productivity option, sign on bonus and relocation.

At Berkshire Health Systems we understand the importance of balancing work with a healthy personal lifestyle. World renowned music, art, museums, and theaters include Mass MoCA, Tanglewood, and Jacobs Pillow are at your doorstep. The Berkshires offer year round recreational activities from skiing to kayaking. Excellent public and private schools make this an ideal family location.



Contact us for this exciting opportunity:  
Shelly Sweet, Physician Recruitment Specialist  
[msweet@bhs1.org](mailto:msweet@bhs1.org)  
or apply online at [berkshirehealthsystems.org](http://berkshirehealthsystems.org)



Sutter Medical Group (SMG) is seeking a BE/BC fellowship trained Adult Cardiothoracic Surgeon to join a well-established program at Sutter Medical Center, Sacramento (SMCS).

The comprehensive adult cardiovascular program at SMCS is an integral part of the Sutter Heart & Vascular Institute, which provides a full range of services from prevention, diagnosis, and treatment to a wide array of rehabilitation services. As a quaternary cardiovascular center that serves a large geographical area, SMCS houses a high-volume cardiovascular surgery program performing over 900 cases per year, vascular surgery program, advanced cardiovascular interventional program performing the full range of catheter-based coronary, vascular and valvular/structural heart procedures, electrophysiology/arrhythmia program, heart failure program, LVAD and heart transplant program, and ACHD program. Being an integrated adult and pediatric hospital, SMCS also houses a comprehensive pediatric heart program offering interventional, electrophysiological, and cardiothoracic surgical treatments.

Outside of the Bay Area, SMCS has the only heart transplant program in Northern California. In 2012, SMCS became just the second cardiac center in the nation to receive full Atrial Fibrillation Certification status from the Society of Chest Pain Centers. SMCS is the only Northern California medical center named on Truven Health Analytics' 50 Top Cardiovascular Hospitals for 2015, the third year in a row the Sutter hospital has received this honor. It is also the only California hospital to be honored under the category of "Teaching Hospitals without Cardiovascular Residency Programs." Sutter Health however does have a Family Medicine Residency program and a Hospitalist Fellowship which allow teaching opportunities.

By joining Sutter Medical Group (SMG) you would become a part of a successful, 1,000+ member multi-specialty group offering physicians the opportunity to build their practices within a progressive, financially sound and collaborative organization. SMG is recognized as a Top Performing Physician Group by the Integrated Healthcare Association. Our members are dedicated to providing the highest quality and most complete health care possible to the people in the communities we serve in the greater Sacramento Sierra Region of Amador, Placer, Sacramento, Solano and Yolo Counties.

***Community Information:***

*Sacramento, the state capital of California, is the core cultural and economic engine of a four-county metropolitan area exceeding 2.1 million residents. Sacramento is the seventh most populous city in California. Greater Sacramento has been cited as one of the five most livable regions in America.*

*The city offers a wealth of cultural diversity and ample activities, including museums, parks and historical sites. Sacramento has close access to fabulous lakes and rivers, snow sports and beautiful trails for running, hiking, biking, etc. Whether it is honoring its Gold Rush beginnings in Old Sacramento or cheering on its professional basketball team, the Sacramento Kings, or its minor league baseball club, the Sacramento River Cats, the city celebrates its past and present.*

*Centrally located, it is an hour and a half from the mountains of Lake Tahoe or the bay of San Francisco. For the wine connoisseur, scenic Napa Valley is just a short drive away.*

Michelle Pedler  
Physician Recruiter  
[develops@sutterhealth.org](mailto:develops@sutterhealth.org)



**New Healthcare Career  
Resource from Elsevier!**

## Personalize your healthcare career search with the power of Elsevier.

*At myHealthTalent.com, your professional success is our personal mission.*

- Introducing the most individualized, optimized, and effective job search solution for medical professionals
- **Create an account and start connecting with top employers**
- Gain instant access to new career opportunities at leading medical institutions and practices
- **Subscribe to customized job alert emails to immediately receive information on new job postings in your specialty, setting, or location**
- Log in on any device, and peruse wherever and whenever you choose
- Put your career in the hands of Elsevier, the world-leading provider of information solutions for medical professionals



Make your job search personal, professional, and powerful.

Log in now at







## JOIN OUR FACULTY TEAM IN DEVELOPING A NEW CARDIOLOGY FELLOWSHIP IN SOUTHEASTERN PENNSYLVANIA

Tower Health is in the process of developing a Cardiology Fellowship to begin in July 2020 that will host six fellows per year. We are seeking experienced, dedicated and passionate faculty to build this new program. Tower Health is a seven-hospital regional healthcare system in Southeast Pennsylvania with 100+ ambulatory practices and 20+ urgent care facilities. Tower Health serves a population of 2.5 million people across four counties with the flagship, Reading Hospital, being the largest hospital between Philadelphia and Pittsburgh. Drexel University College of Medicine and Tower Health have partnered to establish a new four-year medical school campus in West Reading, near Reading Hospital, opening in 2021. This partnership will also be assuming ownership of St. Christopher's Hospital for Children in North Philadelphia.

### **NOW HIRING: PROGRAM DIRECTOR TO LEAD OUR NEW CARDIOLOGY FELLOWSHIP**

The ideal candidate must be a fellowship trained Cardiologist with a minimum of 5 years' experience as an active faculty member in an ACGME accredited internal medicine residency or Cardiovascular fellowship. The Program Director must have in-depth knowledge of, and interest in, General Cardiology and will be the primary driver in developing the new fellowship. The Program Director position requires an experienced academic Cardiologist with a track record of leadership, research, clinician educator, mentoring, professionalism and role modeling.

### **NOW HIRING: CARDIAC INTENSIVIST TO JOIN OUR CARDIOLOGY FELLOWSHIP FACULTY**

The ideal Cardiology Intensivist candidate will have a completed fellowship in Cardiovascular medicine. Additional experience should include 3 – 5 years of prior experience in the delivery of Cardiac critical care or fellowship training in Critical Care. This role will provide and manage direct health care for Cardiovascular patients in the Cardiac ICU and support the development of the Cardiology Fellowship.

### **NOW HIRING: NON-INVASIVE CARDIOLOGIST TO JOIN OUR FACULTY TEAM**

The ideal non-invasive cardiologist candidate will have 3 – 5 years of experience as a practicing Cardiologist preferably as an active faculty member in an ACGME accredited Cardiovascular fellowship. This faculty position will be deeply involved in the development and support of the Cardiology Fellowship.



**TOWER HEALTH**  
Advancing Health. Transforming Lives.

# Beaumont

## Cardiovascular Medicine - Electrophysiology Beaumont, Royal Oak

The Department of Cardiovascular Medicine at Beaumont Health in Royal Oak, Michigan is seeking a BC/BE cardiac electrophysiologist to join a dynamic clinical, research and teaching program. The Beaumont Health Heart Rhythm Service is a busy clinical service offering all advanced interventional EP therapies, as well as many investigational technologies. There are 4 procedural labs, 5 mapping systems (Carto, Ensite Velocity, Rhythmia) and a hybrid lab for lead extractions. We are seeking an individual with advanced EP skills, a strong track record in clinical research, and a commitment to teaching fellows, residents and medical students. Mid and early career candidates will be eligible for academic appointment to the faculty of Oakland University William Beaumont School of Medicine at the level of Assistant or Associate Professor.

The Department of Cardiovascular Medicine at Beaumont Health, Royal Oak has a strong tradition in academic cardiology, and serves as both a community and tertiary referral service. Beaumont Health is an eight-hospital, regional health system with a total of 3,429 licensed beds, 187 health centers and nearly 5000 physicians. Beaumont Health is the exclusive clinical teaching site for the Oakland University William Beaumont School of Medicine.

Beaumont Health Royal Oak is located in Oakland County in southeast Michigan. The area boasts top rated schools and neighborhoods, diverse communities, and extensive cultural and recreational opportunities. It has ample access to restaurants, cultural events, college and professional sports, and outdoor activities. Over 500 inland lakes are found in the surrounding region.

- 
- Must be board certified or board-eligible by the American Board of Internal Medicine in Cardiovascular Disease and Clinical Cardiac Electrophysiology
  - Must have strong interpersonal and organizational skills, be a persuasive communicator who is empathetic, and a respectful listener who can create an atmosphere that allows individuals to flourish within the context of the department.
  - Must foster team work (relationship management, build teams)

Beaumont Health offers an excellent salary package commensurate with experience.

The benefit program provides a comprehensive array of benefits and services to employed physicians, including, but not limited to, malpractice, health, life, dental and vision insurance; dues & memberships. Retirement Contribution Plan 403(b), 457(b) Savings Plan; Flexible spending accounts (FSA) & relocation provided.

Interested candidates should forward a current CV, a letter of interest along with the names & contact information of three references to: Amy.Anstett@Beaumont.org or fax to 947-522-1903. For more information about Beaumont Health; please visit:  
Beaumont Health or Beaumont Royal Oak Campus







## AWARDED FOR QUALITY Cardiac Care

Why go anywhere else?

Valley Care Clinic is seeking **Interventional Cardiologists** and an **Electrophysiologist** to join our growing team in McAllen, TX. Candidates must be BE/BC and able to obtain a Texas Medical License. Spanish is plus but not required.

McAllen, Texas is a city of 145,000 people located in The Rio Grande Valley about 90 miles west of the South Texas Gulf Coast. The Rio Grande Valley is home to over 1.3 MIL residents. One of the fastest growing regions in the U.S., The Rio Grande Valley boasts a stable local economy, various cultural and recreational amenities, and was named one of the top 25 Housing Markets in the country by Forbes Magazine.

**South Texas Health System Heart** is the Valley's **ONLY** freestanding cardiac hospital and heart emergency center, and is the **ONLY** hospital in Texas that was named as a recipient of **BOTH** the America's 100 Best Hospitals award for Cardiac Care and the America's 50 Best Hospitals award for Cardiac Surgery by Healthgrades.

- America's 50 Best Hospitals for Cardiac Surgery, 2017-2019
- America's 100 Best In Overall Cardiac Care, 2017-2019
- Cardiac Surgery Excellence Award, 2017-2019 And more!

Our parent company, Universal Health Services, is one of the nation's largest hospital management companies. Through its subsidiaries, UHS owns and operates twenty-seven acute care facilities in six states across the U.S.

For more information or to submit your CV, contact  
Samantha Barnett  
Samantha.Barnett@uhsinc.com  
956.388.2218

English: [southtexashealthsystem.com](http://southtexashealthsystem.com)  
Español: [southtexashealthsystem.com/es](http://southtexashealthsystem.com/es)

Get social with us

# We are South Texas Health System



South Texas Health System  
Children's



South Texas Health System  
Edinburg  
Edinburg Regional  
Rehab Center



South Texas Health System  
Heart



South Texas Health System  
McAllen



South Texas Health System  
Behavioral



Cornerstone Regional  
Hospital

This hospital is directly or indirectly owned by a partnership that includes physician partners, including certain members of the hospital medical staff.



South Texas Health System  
ER Ware Road



South Texas Health System  
ER McCall



South Texas Health System  
ER Monte Cristo



South Texas Health System  
ER Weslaco



South Texas Health System  
ER Mission



*Physician-Led  
Medicine in  
Montana*



## Billings Clinic



Billings Clinic is nationally recognized for clinical excellence. Billings, Montana, is a friendly college community located near the magnificent Rocky Mountains with great schools, safe neighborhoods and abundant family activities. Exciting outdoor recreation is just minutes from home. 300 days of sunshine every year!



# Cardiology

Practice cardiology in our beautiful, new, state-of-the-art Cardiac Center.

### ***Generous stipend & loan repayment***

- The region's largest multi-specialty clinic and tertiary referral center
- Only Certified Chest Pain Center in the region
- ACC NCDR ACTION Registry Platinum Performance Achievement Award 2018
- Advanced Heart Failure Team
- State's highest interventional volume
- Advanced structural heart program: TAVR, MitraClip, WATCHMAN, CardioMEMS
- Top-tier income and benefits
- Excellent call schedule
- Magnet® Recognized for Nursing Excellence
- "One of the Top 25 Best Places to Live" – *Livability.com*

**Contact: Rochelle Woods • 1-888-554-5922**  
**physicianrecruiter@billingsclinic.org**  
**billingsclinic.com**