

Crosby Dragon Fund (Ticker: CRDF)

Managed by: KASB Funds Ltd

Overview: Crosby Dragon Fund (CRDF) is an open end mutual fund with the investment objective of providing long term capital growth from an actively managed portfolio of equity securities. The management company of the fund is KASB Funds Limited and the Trustee is Central Depository Company Limited. M/s Avais Hyder Liaquat Nauman - Chartered Accountants are the statutory auditors of the fund for the period.

Category

Open-End Stock (< Rs. 1b)

MFP Ranking - 5Yrs

30-Jun-14

31-Dec-14

★ ★ ★

★ ★ ★

Average

Average

Mgt. Quality Rating

AM3; Outlook: Stable

Performance Date

31-Dec-14

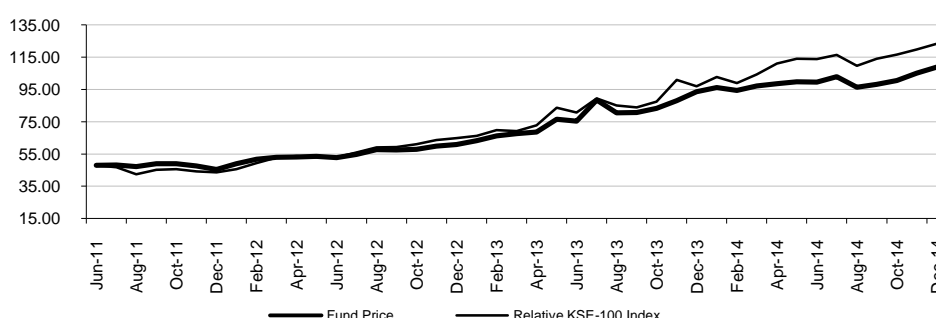
Risk / Return Analysis (5yrs)
Return

Excess Return*	77.8%
Peer Average	114.9%
Peer Maximum	270.9%
Peer Minimum	24.6%

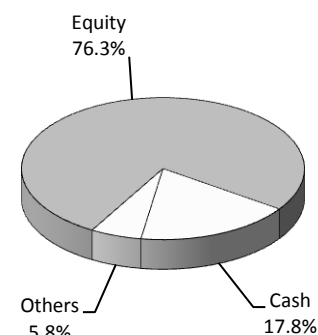
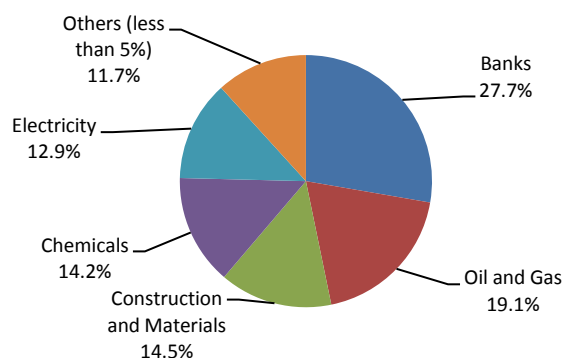
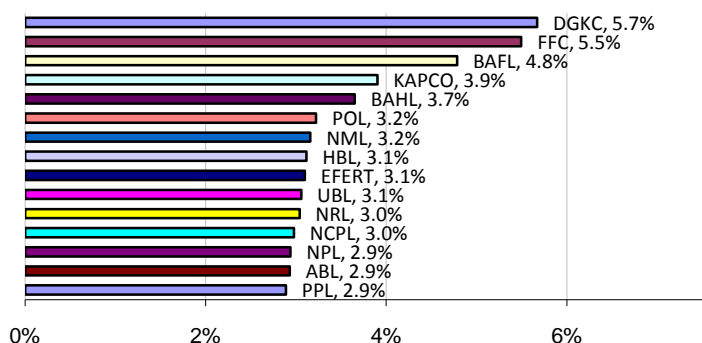
Risk

Avg. Downside Risk	1.4%
Peer Average	1.4%
Peer Minimum	1.3%
Peer Maximum	1.6%

Peer Funds Count 6

Fund Price vs. KSE-100 Index

History

	31-Dec-12	30-Jun-13	31-Dec-13	30-Jun-14	31-Dec-14	Asset Class Allocation
MFP Ranking - 5Yrs	NA	NA	MFR-2 Star	MFR-3 Star	MFR-3 Star	
MFP Ranking - 3Yrs	MFR-2 Star	MFR-3 Star	MFR-3 Star	MFR-3 Star	MFR-2 Star	
MFP Ranking - 1Yr	MFR-1 Star	MFR-3 Star	MFR-3 Star	MFR-3 Star	MFR-2 Star	
NAV (Rs.)	91.86	113.55	116.30	99.58	108.97	
Fund Size (Rs. M)	147.7	171.2	172.2	152.7	158.9	
Dividend (Rs.)	-	20.00	-	24.25	-	
Bonus (%)	-	-	-	-	-	
Revenues (Rs. M)	27.0	61.6	37.4	51.2	17.8	
Dividend Income	5.7	9.8	5.6	9.3	3.3	
Realized Cap. Gains	25.3	43.5	18.5	32.4	3.5	
Unrealized Cap. Gains	8.4	21.0	13.5	9.8	9.9	
Others	(12.5)	(12.8)	(0.3)	(0.3)	0.7	
Expense Ratio (Annld)	5.1%	4.5%	4.5%	4.4%	4.2%	


Portfolio Diversification

Top 15 Holdings (% NAV)


Ranking Scale: MFR 5-Star (Top 10%), MFR 4-Star (Next 22.5%), MFR 3-Star (Next 35%), MFR 2-Star (Next 22.5%), MFR 1-Star (Last 10%)

* Calculated as the difference between fund return and risk free rate

Note: JCR-VIS' mutual fund rating/ranking is not a recommendation to buy, sell, or hold any fund, in as much as it does not comment as to suitability for a particular investor.