

ABL Stock Fund (Ticker: ABLSF)

Managed by: ABL Asset Management Company Ltd.

Overview: ABL Stock Fund (ABLSF) was established under a Trust Deed executed between ABL Asset Management Company Limited as the Management Company and Central Depository Company of Pakistan Limited as the Trustee. ABLSF is an open end mutual fund, and is listed on the Karachi Stock Exchange. The objective of the fund is to provide higher risk adjusted returns to investors by investing in a diversified portfolio of equity instruments offering capital gains and dividends. M/s A.F. Ferguson & Co. Chartered Accountants are the statutory auditors of the fund for the period.

Category

Open-End Stock Funds (> Rs. 1b)

MFP Ranking - 5Yr

30-Jun-15 31-Dec-15

★★★★★ ★★★★★★
Good Good

Mgt. Quality Rating

AM2; Stable Outlook

Performance Date

31-Dec-15

Risk / Return Analysis (5 yr)

Return

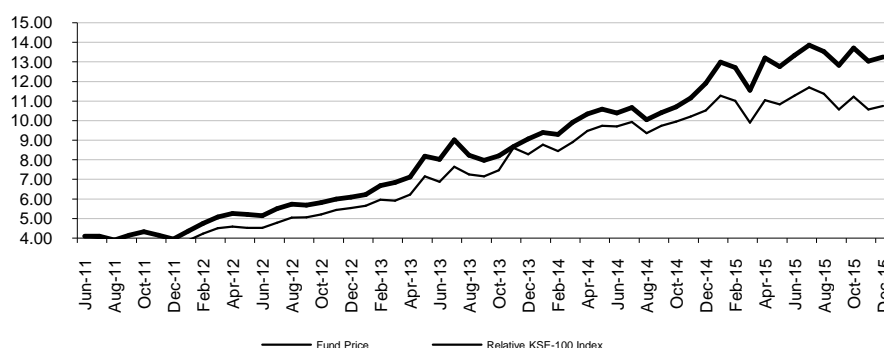
Excess Return*	141.4%
Peer Average	124.3%
Peer Maximum	277.8%
Peer Minimum	25.9%

Risk

Avg. Downside Risk	1.5%
Peer Average	1.6%
Peer Minimum	1.5%
Peer Maximum	1.8%

Peer Funds Count 11

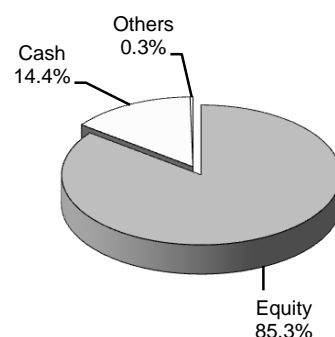
Fund Price vs. KSE-100 Index



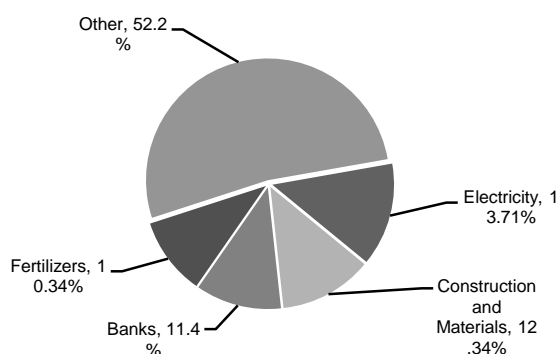
History

	31-Dec-13	30-Jun-14	31-Dec-14	30-Jun-15	31-Dec-15
MFP Ranking - 5Yr	-	MFR-4 Star	MFR-4 Star	MFR-4 Star	MFR-4 Star
MFP Ranking - 3Yr	MFR-3 Star	MFR-3 Star	MFR-3 Star	MFR-3 Star	MFR-3 Star
MFP Ranking - 1Yr	MFR-3 Star	MFR-2 Star	MFR-3 Star	MFR-4 Star	MFR-4 Star
NAV (Rs.)	12.68	11.42	13.02	13.53	13.25
Fund Size (Rs. M)	719.6	1,114.2	1,314.4	1,669.6	2,937.8
Dividend (Rs.)	-	3.26	-	1.00	0.20
Bonus (%)	-	-	-	-	-
Revenues (Rs. M)	111.7	293.7	178.7	659.8	21.1
Dividend Income	20.9	41.4	38.4	88.9	73.8
Realized Cap. Gains	36.1	150.3	8.1	166.0	2.0
Unrealized Cap. Gains	57.4	62.8	127.3	133.1	(77.1)
Others	(2.7)	39.3	10.7	271.8	22.3
Expense Ratio (Annld)	5.4%	4.8%	3.5%	3.3%	3.6%

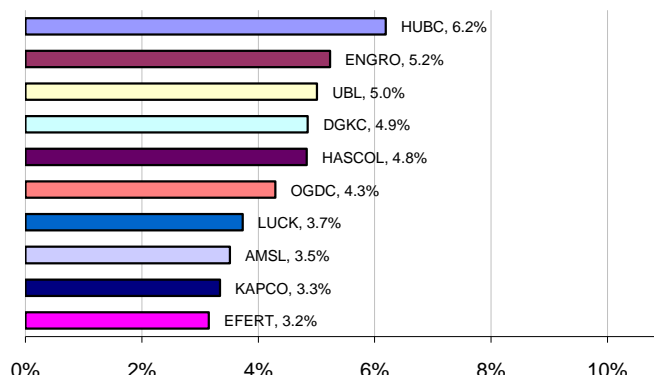
Asset Class Allocation



Portfolio Diversification (% Total Assets)



Top 10 Holdings (% Total Assets)



Ranking Scale: MFR 5-Star (Top 10%), MFR 4-Star (Next 22.5%), MFR 3-Star (Next 35%), MFR 2-Star (Next 22.5%), MFR 1-Star (Last 10%)

* Calculated as the difference between fund return and risk free rate