

Lakson Tactical Fund

Managed by: Lakson Investments Limited

Overview: Lakson Tactical ("the Fund") was established under Trust Deed executed on May 30, 2011 between Lakson Investments Limited as its Management Company and Central Depository Company of Pakistan Limited (CDC) as its Trustee. The Fund is an open end mutual fund and is listed on Pakistan Stock Exchange Limited (Previously: Lahore Stock Exchange), KPMG Taseer Hadi & Co. Chartered Accountants are the Auditors of Lakson Tactical Fund.

Category

OE-Asset Allocation Fund

MFP Ranking - 1Yr

30-Jun-19 31-Dec-18

★★ ★★★★★

Below Average Good

Mgt. Quality Rating

-

Performance Date

30-Jun-19

Risk / Return Analysis (1 yr)
Return

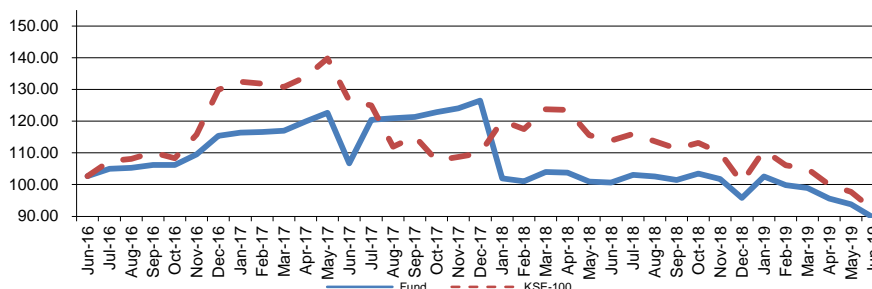
Excess Return*	-18.02%
Peer Average	-13.49%
Peer Maximum	11.03%
Peer Minimum	-28.11%

Risk

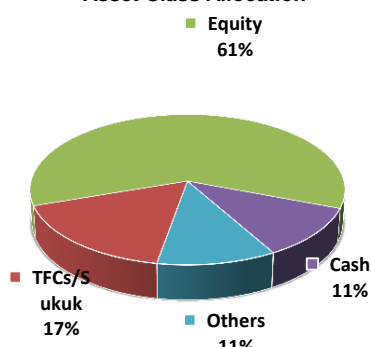
Avg. Downside Risk	2.49%
Peer Average	2.49%
Peer Maximum	11.41%
Peer Minimum	0.28%

Peer Funds Count

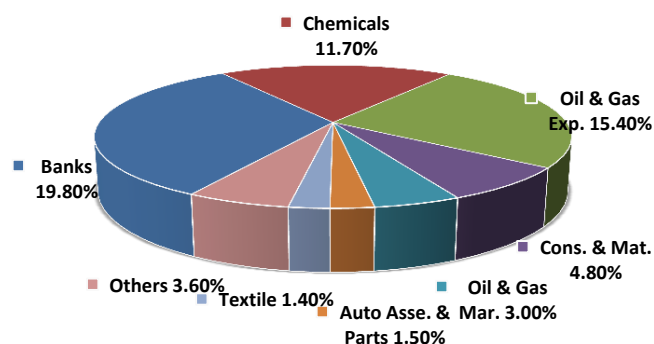
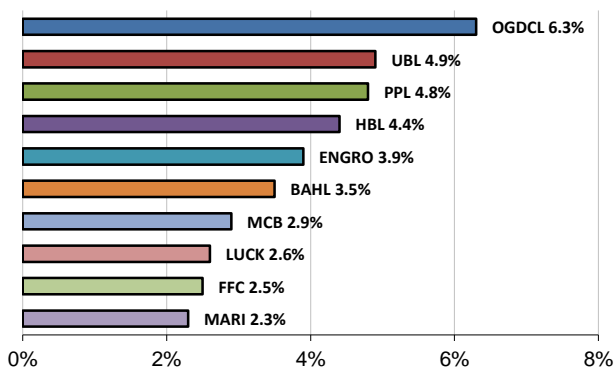
11 Source: PSX, Fund Manager Report

Fund Price vs. KSE-100 Index

History

	30-Jun-17	31-Dec-17	30-Jun-18	31-Dec-18	30-Jun-19
MFP Ranking - 5Yr	MFR-3 Star	MFR-3 Star	MFR-3 Star	MFR-3 Star	MFR-3 Star
MFP Ranking - 3Yr	MFR-3 Star	MFR-3 Star	MFR-3 Star	MFR-4 Star	MFR-3 Star
MFP Ranking - 1Yr	MFR-4 Star	MFR-4 Star	MFR-4 Star	MFR-4 Star	MFR-2 Star
NAV (Rs.)	106.69	126.45	100.61	95.83	89.68
Fund Size (Rs. M)	1,226.0	1,192.0	1,220.0	991.0	756.0
Dividend (Rs.)	13.26	-	-	-	-
Bonus (%)	-	-	-	-	-
Revenues (Rs. M)	157.1	(100.9)	(8.6)	(37.0)	(82.5)
Dividend Income	26.3	18.9	25.3	18.4	32.6
Realized Cap. Gains	115.6	(46.0)	(53.0)	(2.6)	(45.5)
Unrealized Cap. Gains	22.9	(94.8)	(14.1)	(75.4)	(113.8)
Other Income	(7.8)	21.0	33.3	22.5	44.2
Expense Ratio (Annld)	2.3%	2.0%	1.5%	2.1%	2.1%

Asset Class Allocation


Source: Financial Statement of the Fund

Portfolio Diversification Including TFC

Top 10 Holdings (% Total Assets)


Source: Fund Manager Report

Source: Fund Manager Report

Ranking Scale: MFR 5-Star (Top 10%), MFR 4-Star (Next 22.5%), MFR 3-Star (Next 35%), MFR 2-Star (Next 22.5%), MFR 1-Star (Last 10%)

* Calculated as the difference between fund return and risk free rate