

6000-SW SERIES

Manual Swing Clamps | Product Overview and Dimensions

Features:

- Left or right swing motion available
- 90° Swing clamp arm motion
- Higher clamping force than pneumatic version
- Through-hole mounting
- Clamp arm can be radially positioned 360°
- Handle can be radially positioned up to 180°

Applications:

- Assembly
- Checking fixtures
- Welding fixtures
- Tensioning devices

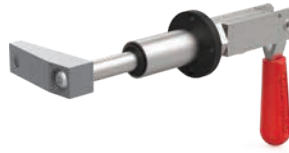
6002-SWL
Clamp Arm
Swing Left



6002-SWR
Clamp Arm
Swing Right



6004-SWL
Clamp Arm
Swing Left



6004-SWR
Clamp Arm
Swing Right



Shown in open (un-clamp) position.

Technical Information | Holding Capacities | Dimensions

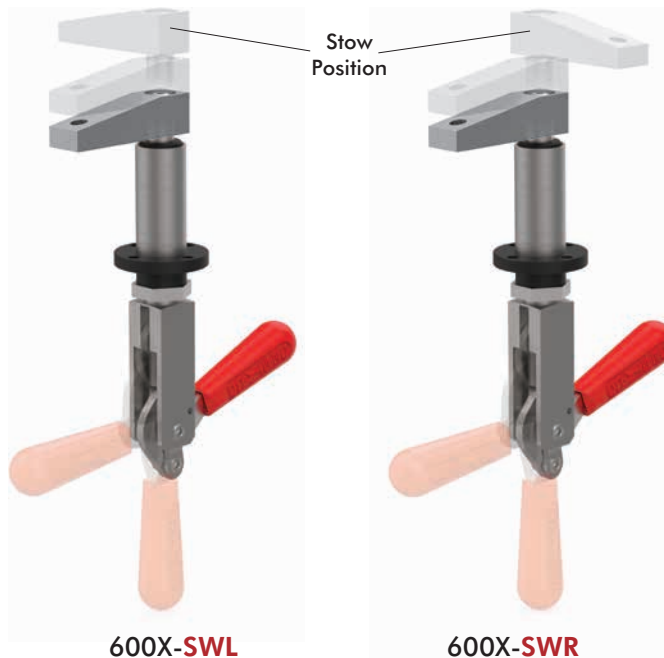
Color Handles

Available on models in this series. Add -Y, -G, -B, -K to end of model number.



Model	Swing Direction	Max. Holding Capacity*	Total Stroke [in] mm	Stroke During Rotation [in] mm	Stroke Straight Pull [in] mm	Weight [lb] Kg
6002-SWL	LH	[400 lbf] 1780 N	[0.75] 19,1	[0.53] 13,5	[0.22] 5,6	[0.95] 0,43
6002-SWR	RH					
6004-SWL	LH	[600 lbf] 2670 N	[1.50] 38	[0.87] 22	[0.63] 16	[1.32] 0,6
6004-SWR	RH					

*Straight pull. Does not account for clamp arm.



6000-SW SERIES

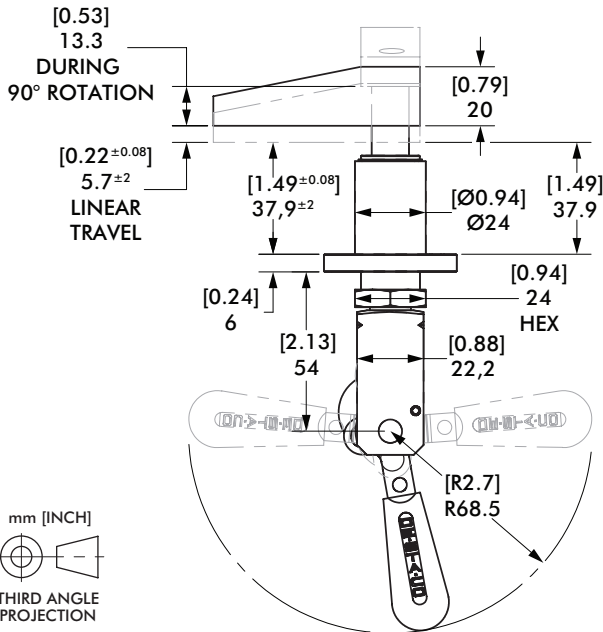
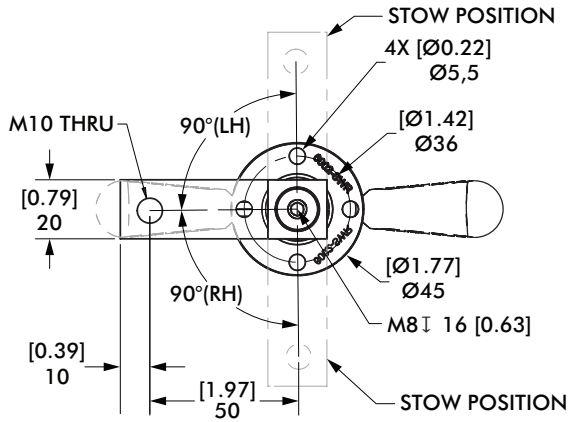
Manual Swing Clamps | Product Overview and Dimensions

6002-SWL/SWR



6002-SWL

6002-SWR

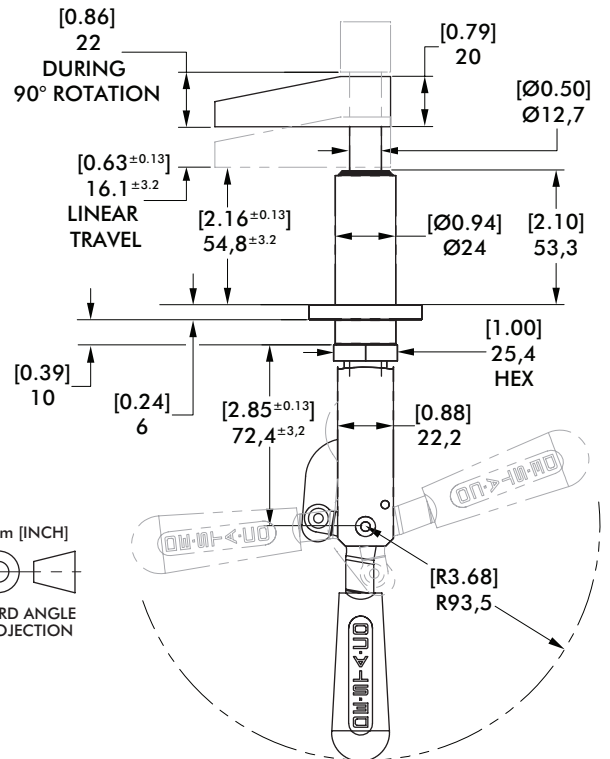
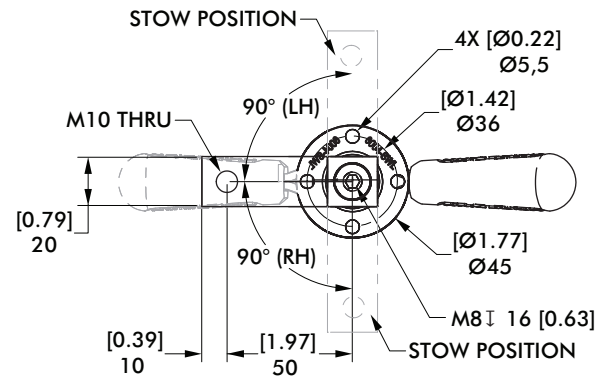


6004-SWL/SWR



6004-SWL

6004-SWR



Applied Force (on handle)	[lbs] N	[25] 111	[20] 89	[15] 67	[10] 44
Plunger Pull Force (straight pull)		[360] 1601	[288] 1281	[216] 961	[144] 641
Clamp Force (with arm shown below)		[229] 1019	[189] 841	[149] 663	[108] 480

Applied Force (on handle)	[lbs] N	[40] 178	[30] 133	[20] 89	[10] 44
Plunger Pull Force (straight pull)		[576] 2562	[432] 1922	[288] 1281	[144] 641
Clamp Force (with arm shown below)		[323] 1437	[269] 1197	[189] 841	[108] 480

Higher clamping forces than pneumatic version