

# 8800 SERIES

## Pneumatic Link Clamps | Product Overview

### Features:

- Alternative solution to swing clamps
- The clamp arm may be positioned in any 45° radial position
- Magnetic piston for sensing option
- Sensing option tracks, 4X Ø4mm, 4X 3x6mm
- Built-in flow controls
- Clamp arm and spindle included
- Patented body design allows for multiple mounting options
- Non toggle-locking linkage

### Applications:

- Assembly & welding fixture
- Light machining

### Also Available:

See page MC-PSC-40 for mounting kits

8822



8832/  
8832G



8840/  
8840G



8850/  
8850G



## Technical Information | Holding Capacities

Model	Clamping Force at 5.5 bar [80 psi]	Bore Diameter [in] mm	Air Consumption at 5.5bar [80psi]	Weight	Seal Kit
8822	[27 lbs] 120 N	[0.87] 22	[0.033 CFM] 0,93 lpm	[0.7 lbs] 0,3 kg	882200
8832/ 8832G	[52 lbs] 231 N	[1.26] 32	[0.042 CFM] 1,19 lpm	[1.3 lbs] 0,6 kg	883200
8840/ 8840G	[102 lbs] 454 N	[1.57] 40	[0.074 CFM] 2,10 lpm	[1.9 lbs] 0,9 kg	884000
8850/ 8850G	[138 lbs] 614 N	[1.97] 50	[0.125 CFM] 3,54 lpm	[3.4 lbs] 1,5 kg	885000

Operating Pressure Range: 2.8 bar [40psig] to 8.3 bar [120psig]

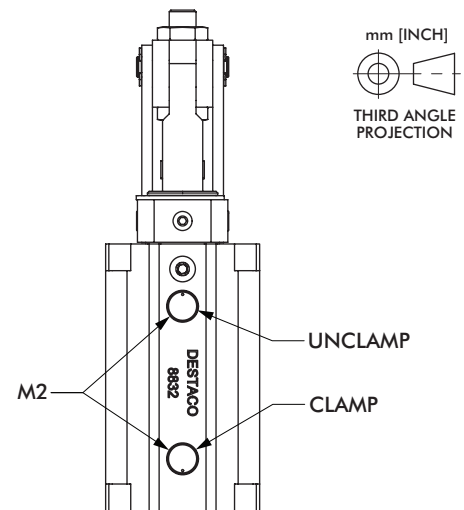
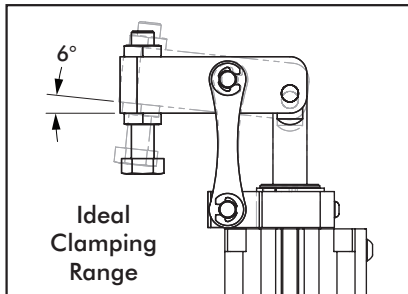
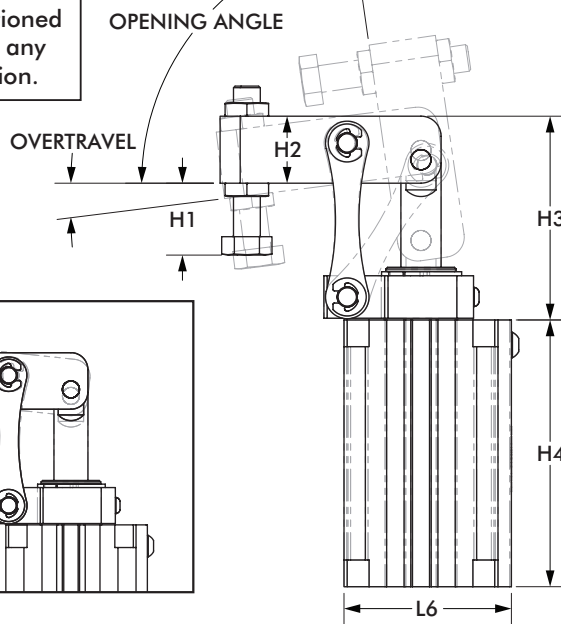
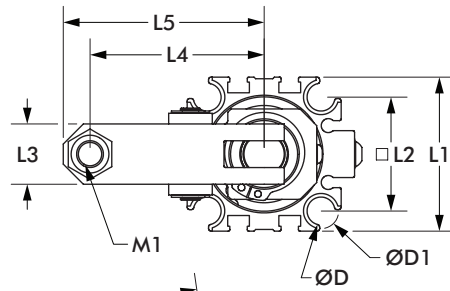
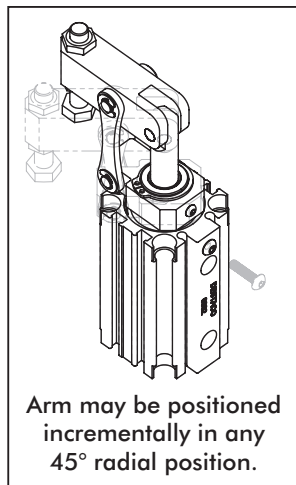
Temperature Operating Range: -10°C to 80°C [14°F to 175°F]

## Exerting Force

Model	Input Pressure					Exerting Force
	[40 psi] 2,8 bar	[60 psi] 4,1 bar	[80 psi] 5,5 bar	[100 psi] 6,9 bar	[120 psi] 8,3 bar	
8822	[12 lbs] 53 N	[21 lbs] 93 N	[27 lbs] 120 N	[35 lbs] 156 N	[44 lbs] 196 N	
8832	[26 lbs] 116 N	[39 lbs] 173 N	[52 lbs] 231 N	[64 lbs] 285 N	[78 lbs] 347 N	
8840	[50 lbs] 222 N	[75 lbs] 334 N	[102 lbs] 454 N	[123 lbs] 547 N	[147 lbs] 654 N	
8850	[63 lbs] 280 N	[102 lbs] 454 N	[138 lbs] 614 N	[172 lbs] 765 N	[208 lbs] 925 N	

# 8800 SERIES

## Pneumatic Link Clamps | Dimensions



Model	Opening Angle	Over-Travel	ØD	ØD1	H1 (MIN/MAX)	H2	H3	H4
8822	85°	6°	[0.28] 7	[0.35] 9	[0.30 - 1.12] 7,5 - 28,5	[0.67] 17	[2.11] 53,5	[2.73] 69,4
8832/ 8832G			[0.33] 8,3	[0.41] 10,5	[0.37 - 1.04] 9,5 - 26,5	[0.79] 20	[2.40] 61	[3.14] 79,7
8840/ 8840G			[0.79] 20	[2.64] 67	[3.50] 88,8			
8850/ 8850G			[0.42] 10,6	[0.53] 13,5	[0.47 - 1.81] 12 - 46	[1.02] 26	[2.99] 76	[4.13] 104,8

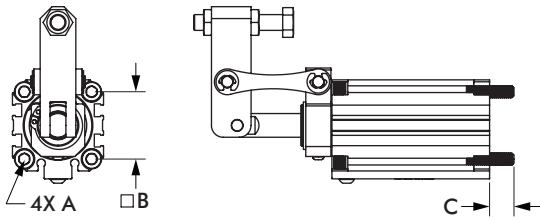
Model	L1	L2	L3	L4	L5	L6	M1	M2
8822	[1.42] 36	[1.00] 25,4	[0.59] 15	[1.61] 41	[1.89] 48	[1.42] 36	M6-1	M5
8832/ 8832G	[1.81] 46	[1.34] 34	[0.71] 18	[2.05] 52	[2.36] 60	[1.97] 50	M8-1,25	1/8 NPT
8840/ 8840G	[2.05] 52	[1.57] 40	[0.79] 20	[2.20] 56	[2.60] 66	[2.24] 57		1/8 NPT
8850/ 8850G	[2.52] 64	[1.97] 50	[0.87] 22	[2.50] 63,5	[3.05] 77,5	[2.80] 71	M10-1,5	1/8 NPT
								G1/8

**Application Note:**  
If using clamping arms other than standard, the length and mass must not exceed 1.5X the overall length and mass of the standard arm.

# 8800 SERIES

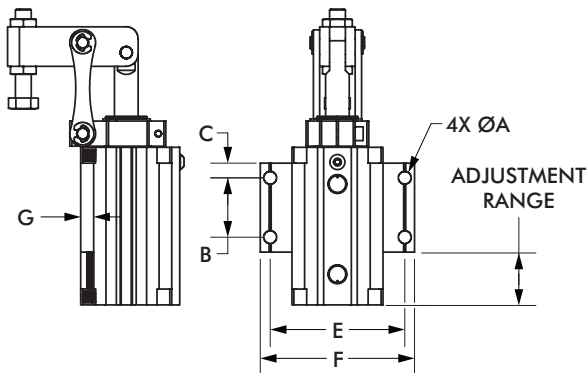
## Pneumatic Link Clamps | Dimensions

### Standard Mount Kits



Mount Kit Number	For Model	A	B	C
882262	8822	M5	[1.00] 25,4	[0.43] 11
883262	8832	M6	[1.34] 34	[0.51] 13
884062	8840		[1.57] 40	[0.53] 13,5
885062	8850	M8	[1.97] 50	[0.93] 23,5

### Side Mount Kits



Mount Kit Number	For Model	ØA	B	C	D	E	F	G	ADJUSTMENT RANGE
882260	8822	[0.22] 5,5	[1.18] 30	[0.20] 5	[1.57] 40	[1.91] 48,5	[2.26] 57,5	[0.23] 5,8	[0.67] 17
883260	8832	[0.26] 6,5	[1.18] 30	[0.30] 7,5	[1.77] 45	[2.68] 68	[3.07] 78	[0.26] 6,5	[0.71] 18
884060	8840	[0.33] 8,5	[1.38] 35	[0.39] 10	[1.97] 50	[2.91] 74	[3.31] 84	[0.31] 8	[0.87] 22
885060	8850	[0.33] 8,5	[1.57] 40	[0.39] 10	[2.36] 60	[3.66] 93	[4.17] 106	[0.31] 8	[1.02] 26

