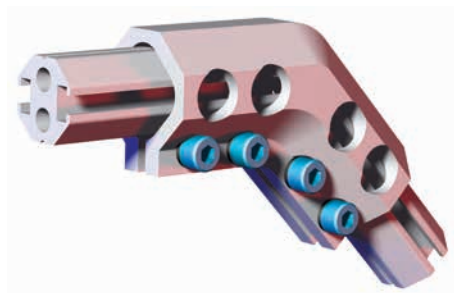


45° Angular Boom Clamp Brackets



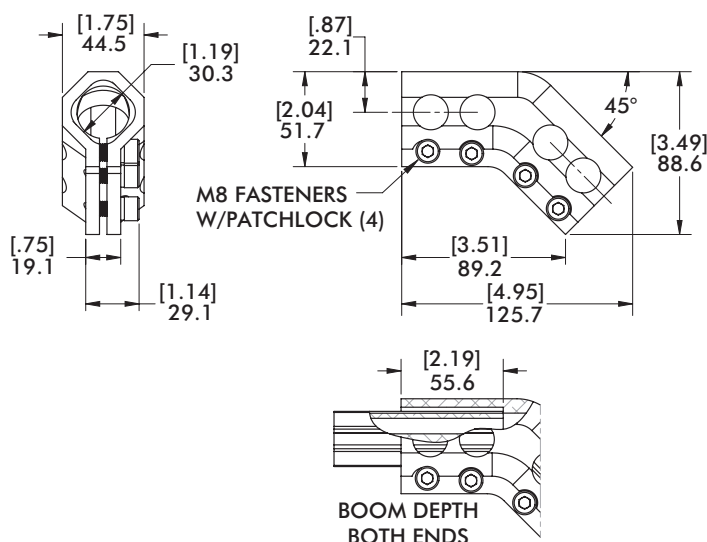
Features:

- Mounts (2) Bodybuilder extrusion booms inline at a 45° angle.

Specifications:

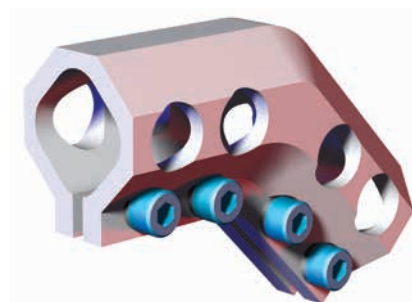
Material: Aluminum

DC-3030B-45 30mm to 30mm 45° External Boom Clamp Brackets



Specifications:

Max. Static Clamp Load:
271Nm [200 ft-lb]



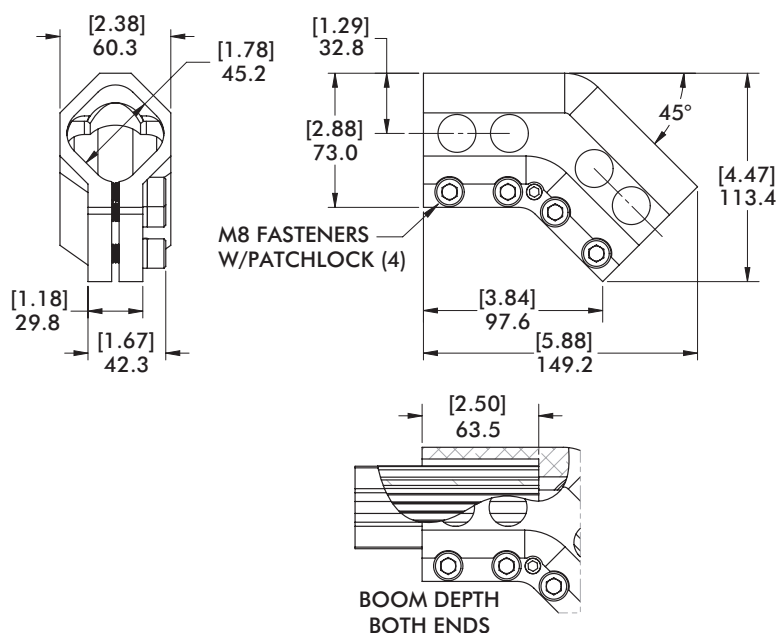
Model Number

CPI-DC-3030B-45

Weight

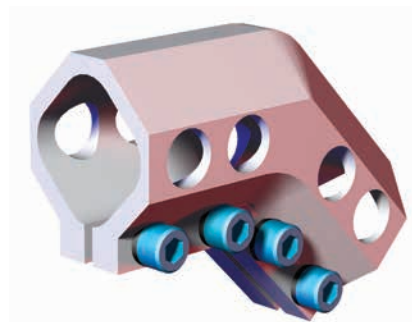
.30 kg [.66 lb]

DC-4545B-45 45mm to 45mm 45° Angular Boom Clamp Brackets



Specifications:

Max. Static Clamp Load:
475 Nm [350 ft-lb]



Model Number

CPI-DC-4545B-45

Weight

.64 kg [1.4 lb]

BODYBUILDER™ ELBOWS

BodyBuilder™ Octagonal Tooling | Dimensions | Technical Specifications



DC-6060B-45 60mm to 60mm 45° Angular Boom Clamp Brackets

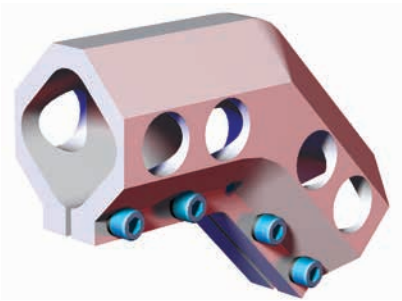
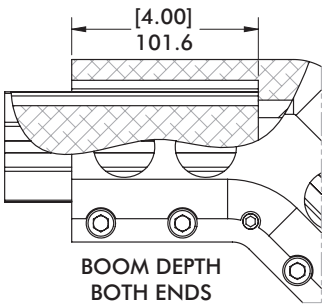
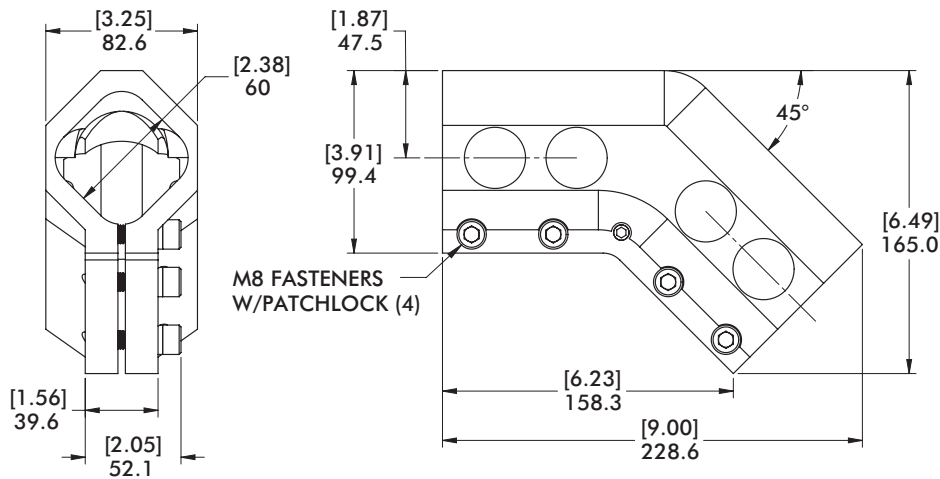
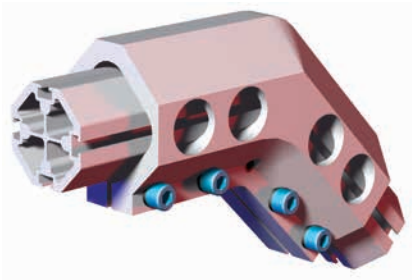
Specifications:

Max. Static Clamp Load:
746 Nm [550 ft-lb]

Material: Aluminum

Features:

- Mounts (2) Bodybuilder extrusion booms inline at a 45° angle.



Model Number	Weight
CPI-DC-6060B-45	1.74 kg [3.8 lb]