



# AEROSPACE PRODUCTS

## WORKHOLDING SOLUTIONS FOR WING AND FUSELAGE APPLICATIONS

[destaco.com](http://destaco.com)

### BROCHURE

### APPLICATIONS



WELDING



ASSEMBLY



CNC MACHINING



PRESS ROOM

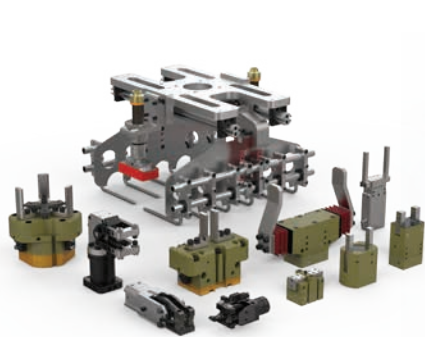


AUTOMATION

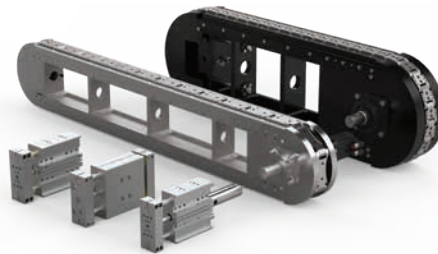


GREEN PRODUCTION

### Built on a Strong Foundation



Gripping Solutions



Linear Positioning Solutions



Rotary Positioning Solutions



Clamping Solutions



CRL Remote Handling Solutions



Robotic Tooling Solutions

DESTACO, a Stabilus Group company, is a global leader in the design and manufacture of high-performance automation, workholding and remote-handling solutions. The company serves customers in a variety of end-markets, including the automotive, life sciences, consumer packaged goods, aerospace, industrial and nuclear sectors.

Built on a legacy of more than 100 years, DESTACO offers a comprehensive portfolio of products designed to engineer precise movement, placement and control solutions that drive productivity and uptime for manufacturers around the world. The DESTACO family of products consists of industry-leading brands such as DESTACO Manual Clamps, Power Clamps, and End Effectors; CAMCO™ and Ferguson™ Indexers; Robohand™ Grippers; and CRL™ Manipulators and Transfer Ports.

DESTACO is based in Auburn Hills, Michigan, U.S.A. The company has more than 800 employees with 13 locations, in 9 countries, across the Americas, Europe and Asia.

Stabilus is one of the world's leading providers of motion control solutions for customers across a broad spectrum of industries including mobility, industrial machinery, automation, energy, construction, health, recreation, and furniture. Stabilus offers reliable and innovative solutions that enable, enhance and automate precise movement, placement, as well as opening, closing, lifting, lowering and adjusting actions. The Group, which has its headquarters in Koblenz, has a global production and distribution network with more than eight thousand employees worldwide and generated revenues of €1.3 billion in the 2024 fiscal year. Stabilus SE is listed in the Prime Standard segment of the Frankfurt Stock Exchange and included in the MDAX index.

More information is available at [destaco.com](https://destaco.com) and [group.stabilus.com](https://group.stabilus.com)

## Focusing all our Resources

### New Product Development

DESTACO has dedicated resources to design and build the next generation of products and solutions

### Customer Service and Technical Support

DESTACO has industry leading global support to address any product and application concerns you may have

### Design Tools

DESTACO provides an extensive CAD library, sizing software, and online tools to support our global customers



## Our Insight Working for You

### Application Engineering

We utilize our expertise and complete portfolio of products to create solutions that fit our customers' needs and applications

### Custom Solutions

If our off-the-shelf solutions don't fit, we will partner with our customers to develop products that will



## DESTACO offers special value added engineering services for aerostructure applications.

By working closely with your designers and engineers, we can provide custom workholding solutions for your applications, whether it requires building a system with standard products or modifying an existing product. We can also design a completely unique component to perform specialized workholding functions.

- Autoclave and Non-Autoclave Workholding Devices for Composite Aerostructures
- Workholding for Wing & Fuselage Tooling
- Expanding Mandrels & Chucks for Turbo Fan Engine Machining and Assembly
- Customized Automatic Tool Changers for Robotic Drilling

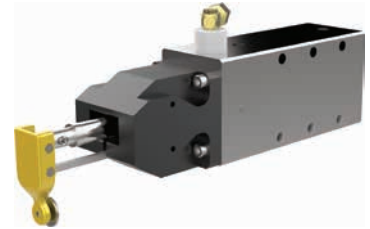
### 991-1091 Series Mandrel Power Clamp

- Unique arm motion rotates into position and then creates a drawing motion
- Pull-action clamping forces 13.3 to 33.4 kN [3,000 to 7,500 lbs.]
- Working temperature to 180°C [356°F] for demanding autoclave cycles
- Fully enclosed and sealed for wash down applications
- Toggle-lock feature maintains clamp force when separated from air supply
- Optional end of cylinder stroke pneumatic sensor available for the 1091 series
- Detent mechanism maintains arms in the retracted position when disconnected from air supply



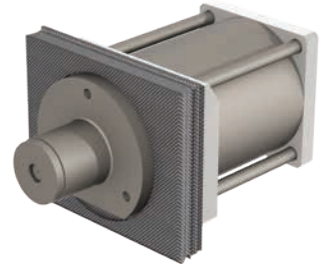
### PFC Series Pneumatic Fabric Clamp

- Fabric friendly design, no sharp contact points
- 133-222N [30-50 lbs.] clamping force
- Rod lock feature maintains clamping force when disconnected from air supply
- Compliant arm design allows for height and angular variation
- Autoclave ready



### LPC Series Locking Pullback Clamp

- Maintains pull force when used to hold composite tooling together
- Extends through locating holes, expands pin and pulls back when air is released
- Large internal spring maintains clamping force when disconnected from air supply of 2.2 to 3.1 kN [500 to 700 lbs.]
- Allows for misalignment
- Working temperature to 180°C [356°F] for demanding autoclave cycles



### CFC Series Controlled Force Cartridge

- Prevents over clamping of thin, lightweight structures
- Visually indicates safe clamping load condition - green/yellow/red
- Available sizes: 44, 89 and 133 N [10, 20, and 30 lb.] nominal clamping load cartridges are color coded for easy identification
- Indicates nominal load with +/-5% accuracy or +/- 10%.
- Easily adapts to existing DESTACO squeeze action plier clamps that use M10 adjustment spindles
- Additional loads available upon request



### MCC Series Manual Clip Clamp

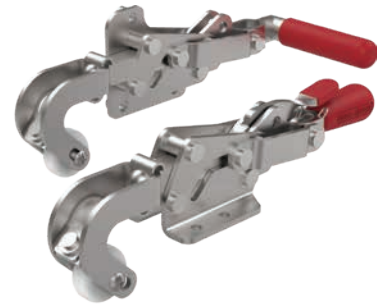
- Excellent product for positioning /clamping wing and fuselage clips before and during drilling operations.
- Exerts clamping force in two directions
- Horizontal clamping force 55N [12 lbs] nominal; vertical clamping force 13N [3 lbs.] nominal (additional loads available upon request)
- Over-center toggle lock maintains clamped and locked position
- Detent holds handle open to 180°
- Spring loaded to accommodate variation in part size





## MSC-101 Series Manual Stringer Clamp

- Customize workholding solution for wing and fuselage drilling and assembly
- Cost effective stringer clamping solution
- Unique arm movement swings 63°, then pulls in a straight line with 19mm [0.75in.] of travel
- Over-center toggle locking design for secure and repeatable clamping
- Compliant arm design accommodates small variations in stringer thickness
- Customized clamping arms available to suit application requirements
- Optional DESTACO Toggle Lock Plus® version available for added safety



## MSC-200 Series Manual Stringer Clamp

- Innovative clamping solution accommodates wide variations in stringer dimensions
- Self-centering clamping point provides clamping force in two directions which secures the stringer into location
- Over-center toggle locking action in both open and closed position for secure and repeatable operation
- Nominal clamping force: 240N [54 lbs.] horizontally, 470N [106 lbs.] vertically @ 5.5 bar [80psi] inlet pressure
- Customized clamping arms available to suit application requirements



## PSC Series Pneumatic Stringer Clamp

- Automated stringer clamping solution
- Innovative clamping solution accommodates wide variations in stringer dimensions (thickness & leg lengths)
- Nominal clamping force: 240N [54 lbs.] horizontally, 470N [106 lbs.] vertically @ 5.5bar [80 psi] inlet pressure
- Pneumatic cylinder is sensor ready (Ø4mm)
- Customized clamping arms available to suit application requirements



## PSC Series Pneumatic Stringer Clamp w/Index

- Automated stringer clamping solution with integrated precision stringer index
- Innovative clamping solution accommodates wide variations in stringer dimensions (thickness & leg lengths)
- Nominal clamping force: 240N [54 lbs.] horizontally, 470N [106 lbs.] vertically @ 5.5 bar [80 psi] inlet pressure
- Pneumatic cylinder is sensor ready (Ø4mm)
- Customized clamping arms available to suit application requirements



## PEG Series Pneumatic End Gate Clamp

- Arm pivots 90° then clamps 12°
- Sensor ready design (Ø4mm) to determine position
- 90 lbs (400N) clamp force @ 5.5 bar [80 psi]
- Low profile design



### PRC Series Pneumatic Edge Clamp

- Low profile pneumatic retracting clamp for clamping the edges of thin, lightweight structures such as composites
- Clamping arm travels 25mm [1.00in.] Horizontal then pivots 13° down
- Clamping force range: 220 to 490N [50 to 110 lb.] @ 5.5 bar [80 psi] inlet pressure
- Pneumatic cylinder is sensor ready
- Clamping arm is custom made to suit application requirements



### MSW Series Manual Swing Clamp

- Innovative manual version of our popular pneumatic swing clamps
- Clamping arm swivels 90° for easy loading and unloading
- 5mm [0.19in.] of vertical clamping stroke
- Unique aluminum housing allows for a variety of clamping positions and orientations



### 400 Series Squeeze Action Plier Clamps

- The industry standard for performance and reliability
- Forged alloy steel construction for unmatched durability
- Wide selection of sizes for a variety of applications
- Urethane coated jaws to protect work surfaces are available upon request



### Manual Toggle Clamps

- The original industry standard Red Handle toggle clamps
- Unmatched selection of styles and sizes to meet virtually any clamping application



## Widely used for Turbine Engine machining, Inspection and Assembly

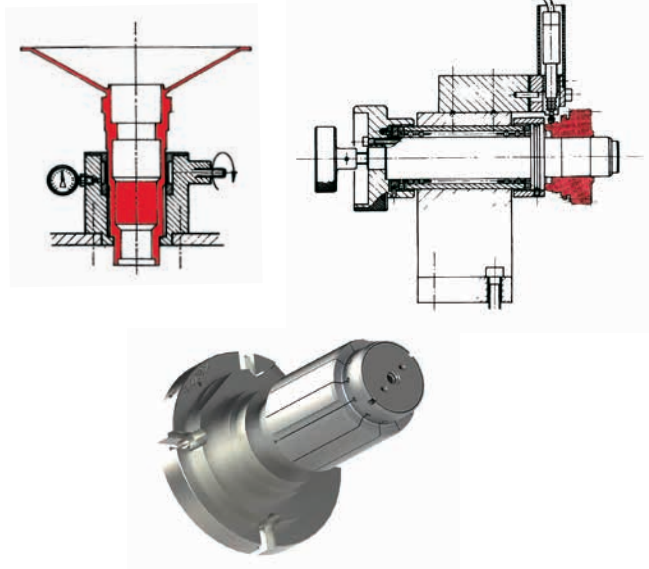
- Diameters available from 6mm to 700mm – Repeatability from 0.002mm to 0.005mm
- Custom engineered for individual component

### Machining

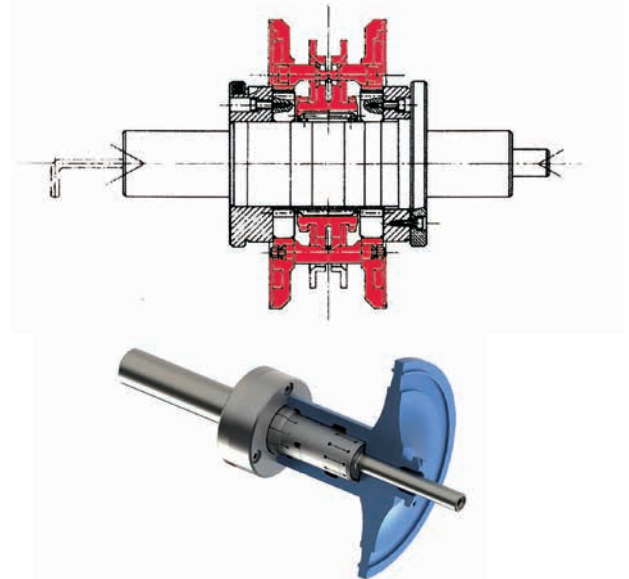
Turning - Milling - Shaving - Grinding



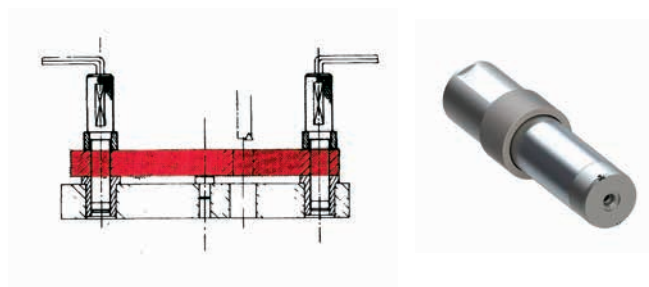
### Inspection



### Balancing



### Locating



### Parts Alignment



## GLOBAL SALES CONTACTS

### CORPORATE HEADQUARTERS



**US**

+1-888-DESTACO  
+1-248-836-6700  
northamerica@destaco.com

THE BEST PRODUCTS.  
UNMATCHED SERVICE.  
WORLDWIDE.



**DE**

+49-6171-705-0  
europe@destaco.com



**SP**

+34-936361680  
spain@destaco.com



**PL**

+48-506002115  
poland@destaco.com



**IN**

+91-80-41123421-426  
india@destaco.com



**MX**

mexico@destaco.com



**FR**

+33-4-7354-5001  
france@destaco.com



**CN**

+86-21-2411-2678  
china@destaco.com



**NL**

+31-297285332  
benelux@destaco.com



**SG**

singapore@destaco.com



**UK**

+44-1902-797980  
uk@destaco.com



**TH**

+66-2326-0812-6  
asia@destaco.com



**CZ**

+420-603-577-341  
czech@destaco.com



**CA**

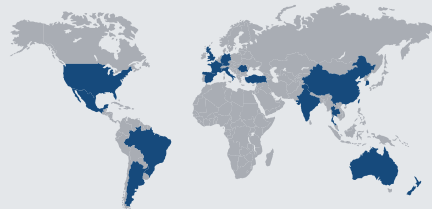
canada@destaco.com



Click or Scan  
to learn more  
about Stabilus.



**Industries**



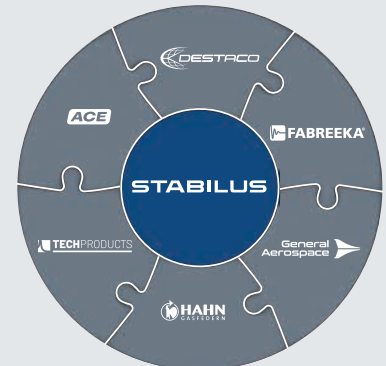
**45 Locations in 19 Countries**



**8K Employees**



**2024 Revenues**



**Expert Brands**