

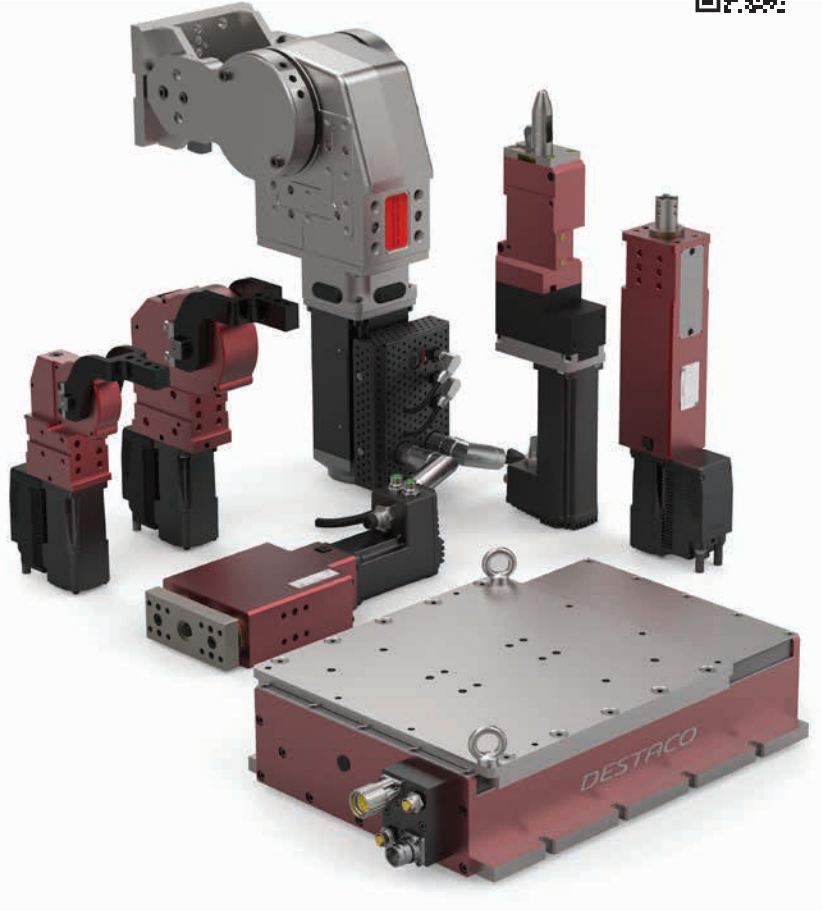
## EVOLUTION IN PRODUCTIVITY

### DESTACO Body-in-White Electric Product Solutions

DESTACO products have a long history of playing a significant role in the automotive Body-in-White (BIW) manufacturing process. Leading the way into the future, our growing electric BIW product line of smart products eliminate CO<sup>2</sup> use, provide important data and control for optimizing efficiencies, and are a frontrunner for flexible manufacturing with Plug & Play solutions.

The various models of our smart, electric Pivot Units, Power Clamps, Centering Pin Packages, and Positioning Slides provide operators the ability to easily adjust speeds, positioning, and/or torque for fine-tuning production, meeting the demands of modern manufacturing systems.

As production requirements evolve, DESTACO will continue to expand our product portfolio of electric solutions for use in all types of manufacturing processes.



#### PRODUCT HIGHLIGHTS/OPTIONS

- Complete Body-in-White Portfolio
- Smart & Economy Line
- Plug & Play solution - fast start up
- Integrated position & hold down control

#### FEATURES & BENEFITS



ELECTRIC

- Energy efficiency - CO<sup>2</sup> reduction
- Daisy chain connection - less cables



PERFORMANCE

- Adjustable torque - smooth clamping
- Adjustable positions - multiple positions
- Adjustable speed - cycle time optimization



PRECISION

- Integrated position & hold down control
- Integrated part present control
- Self adjustment - no shims needed



ASSEMBLY



WELDING



FIXTURE/TESTING



LOGISTICS

APPLICATIONS



AUTOMOTIVE



INDUSTRIAL



AEROSTRUCTURE



CONSUMER GOODS

MARKETS

## Electric Body-in-White Product Portfolio



**92W Electric  
Power Clamp  
(Compact)**



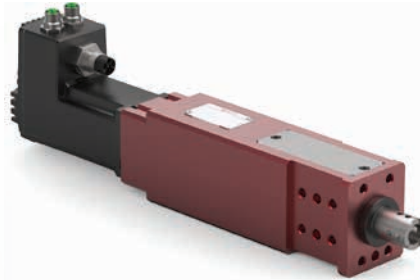
**92W Electric  
Power Clamp  
(Heavy-Duty)**



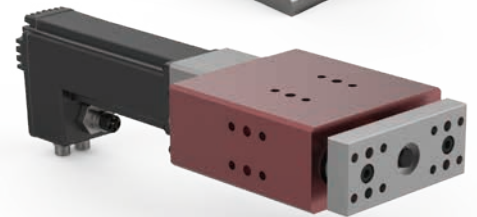
**98W Electric  
Pivot Unit  
(With Decentralized  
Drives)**



**92P Electric  
Centering Pin  
Clamp**



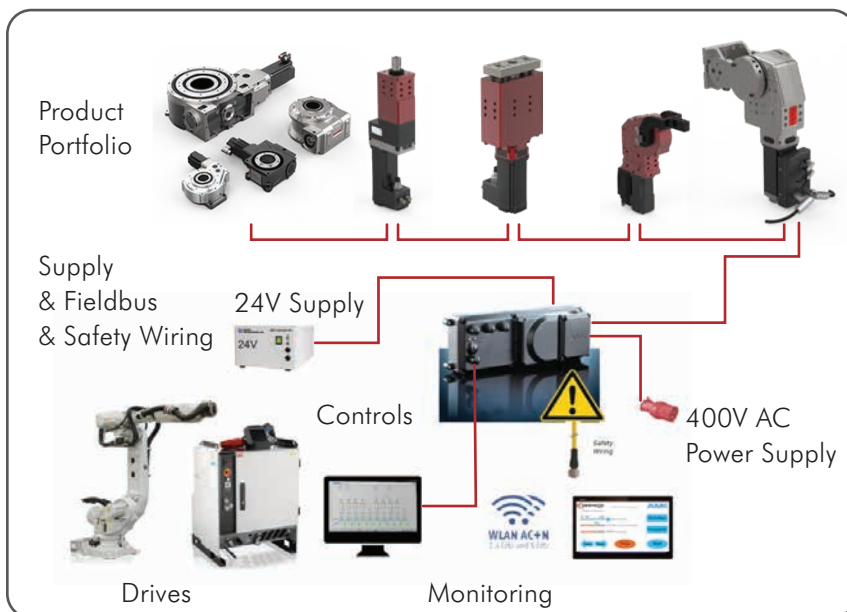
**96W Electric  
Pin Package**



**95W Electric  
Slide/Lifter**



**99W Electric  
Positional Slide**






**Contact DESTACO to learn more about our Electric BIW Solutions and how we are evolving our customers' productivity in manufacturing.**



DIMENSIONS AND TECHNICAL INFORMATION ARE SUBJECT TO CHANGE WITHOUT NOTICE.

PC\_ESBIW-F\_0623\_US

**CORPORATE HEADQUARTERS**  
 **US**  
+1-888-DESTACO  
+1-248-836-6700  
northamerica@destaco.com

 **DE**  
+49-6171-705-0  
europe@destaco.com  
 **PL**  
+48-506002115  
poland@destaco.com

 **FR**  
+33-4-7354-5001  
france@destaco.com  
 **NL**  
+31-297285332  
benelux@destaco.com

 **UK**  
+44-1902-797980  
uk@destaco.com  
 **CZ**  
+420-603-577-341  
czech@destaco.com

 **SP**  
+34-936361680  
spain@destaco.com  
 **IN**  
+91-80-41123421-426  
india@destaco.com

 **CN**  
+86-21-2411-2678  
china@destaco.com  
 **SG**  
singapore@destaco.com

 **TH**  
+66-2326-0812-6  
asia@destaco.com  
 **CA**  
canada@destaco.com

 **MX**  
mexico@destaco.com