

# 82P50-1800

Pneumatic Centering Pin Clamp | Tolerance Compensation | Ordering Information

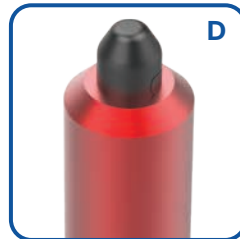
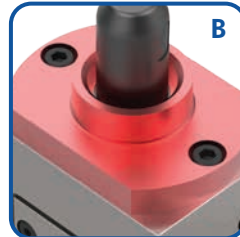
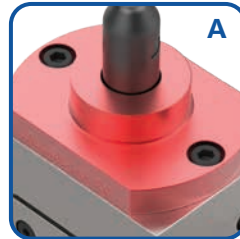
82P50-1800 L8 A 01 0 0 0

Base Model	Description
82P50-1800	Tolerance Compensation 0 - 5 mm [0 - 0.197 in]

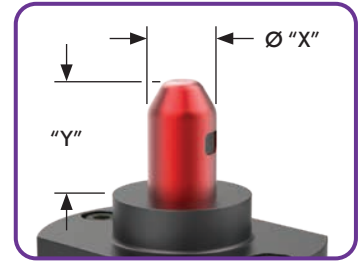
Sensor	Description
L8	PNP Sensor with M12x1 In-line Connector (8EA-146-4-B and 8EA-163-G)



Support Shape	Description
A	Standard
B	Flange Hole Down
D	Chamfered



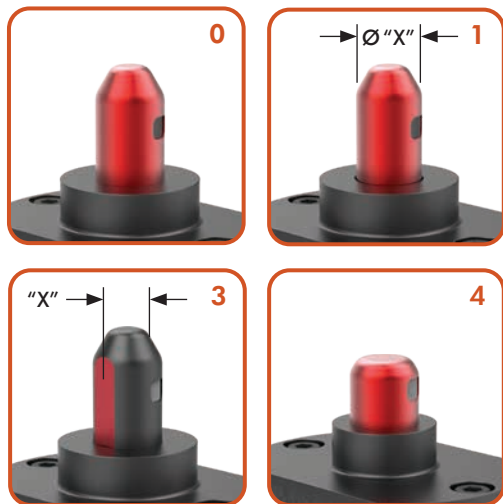
Pin Diameter	Pin Ø "X" mm <sup>-0,05</sup>	Pin Height "Y" mm
01	15,8	
02	19,8	26
03	20,8	
04	29,8	38
05	15,5	26
06	29,8	38



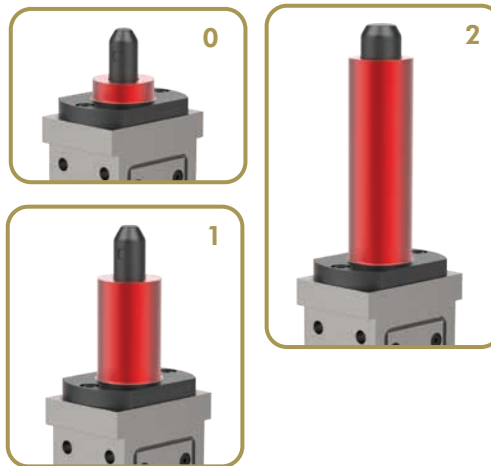
CNOMO fixing  
with adaptor  
shown. Order  
Separately:  
8MA-538-1



Pin Shape	Description	Release Dimension "X"
0	Round	
1	Pin Clipping	"X" = Pin Ø minus 0.8 mm
3	Pin Release on Flat Parallel of Finger	Pin Ø      Flat "X" Ø15,8      14,5 mm Ø29,8      21,0 mm
4	Door Case	



Support Height	Description
0	10 mm
1	50 mm
2	100 mm



Finger Shape	Desc.
0	Full
1	Hook



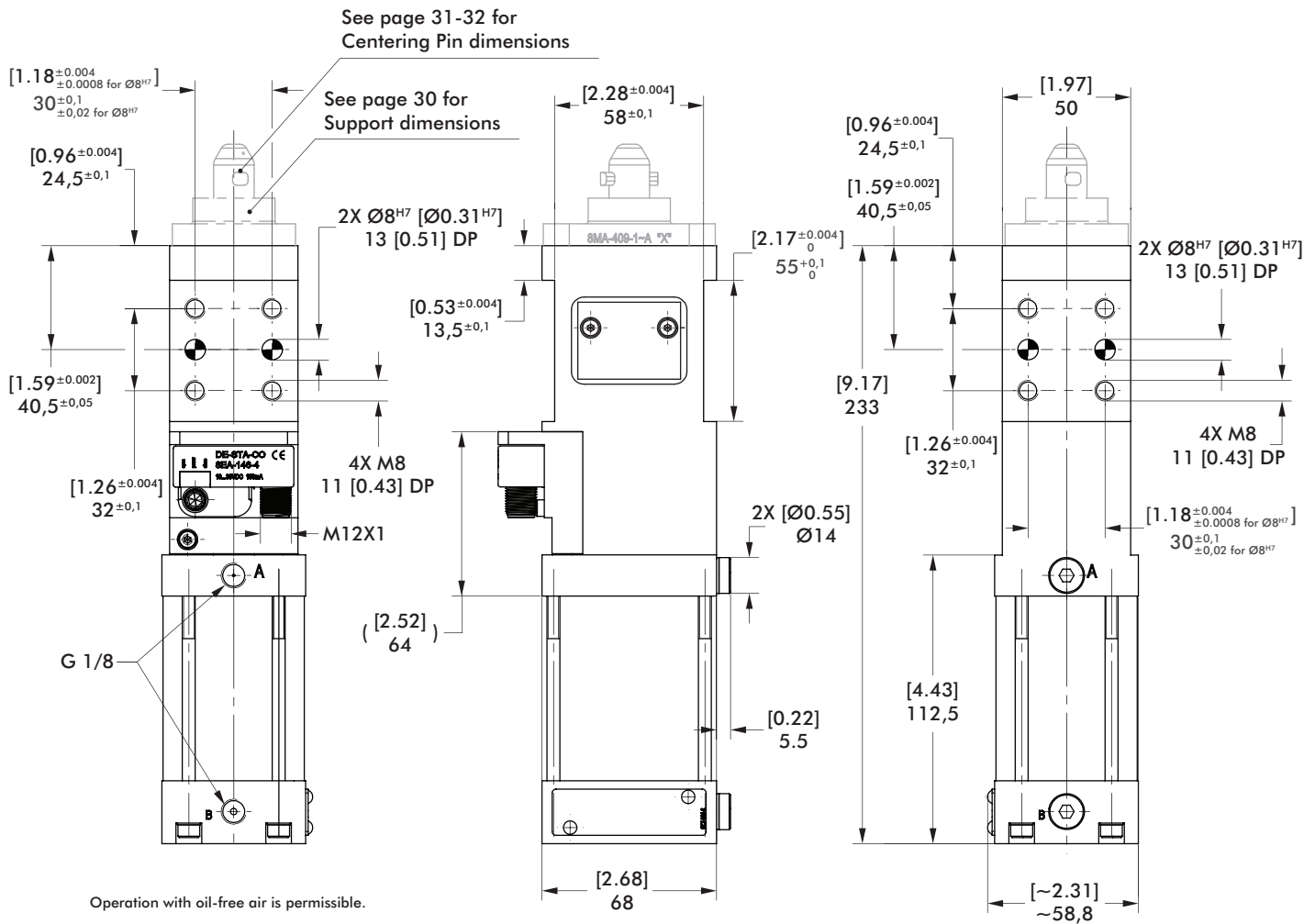
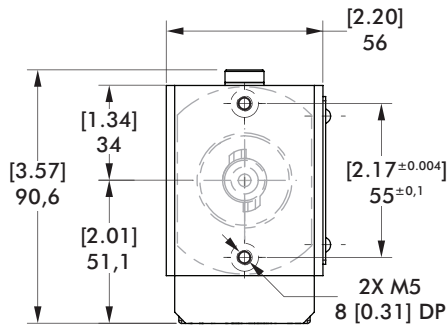
### Configuration Compatibility Chart

Determine the most important option, then find compatible combination of options within each row.

Pin Diameter	Support Shape			Pin Shape				Support Height			Finger Shape	
	Standard	Flange Hole Down	Chamfer	Round	Pin Clipping	Flat	Door Case	10 mm	50 mm	100 mm	Full	Hook
	A	B	D	0	1	3	4	0	1	2	0	1
01    Ø15,8	•			•	•	•	•	•			•	
	•			•					•		•	
			•	•	•					•	•	
02    Ø19,8	•			•				•			•	
		•			•			•				•
03    Ø20,8	•			•						•	•	
	•				•					•		•
				•	•			•			•	•
04    Ø29,8	•			•			•	•			•	•
	•							•			•	
		•		•				•				•
05    Ø15,5	•			•				•			•	
06    Ø29,8		•					•	•				•

# 82P50-1800

## Pneumatic Centering Pin Clamp | Dimensions and Specifications

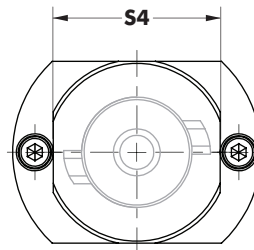
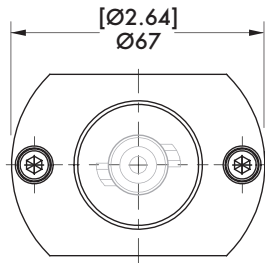
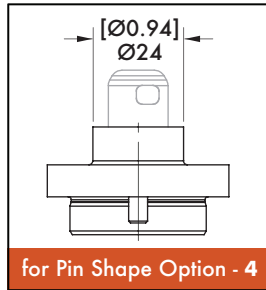


Specification	Unit	82P50-1800
Max. Clamping Force @ 5 bar	[lbf] N	[135] 600
Max. Operating Pressure	[psi] bar	[87] 6
Actuation Time: Open	sec	0.4
Close	sec	0.4
Air Consumption per Double Stroke @ 6 bar [87 psi]	[in <sup>3</sup> ] liter	[42.72] 0,7
Weight	[lb] kg	[5.73] 2,6

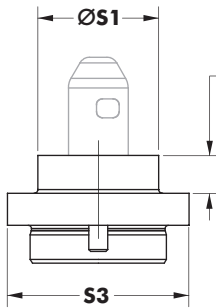
# 82P50-1800 CENTERING PIN SUPPORTS

Pneumatic Centering Pin Clamps | Dimension

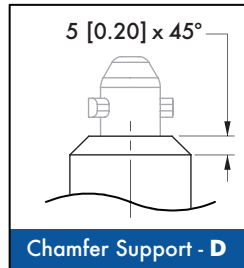
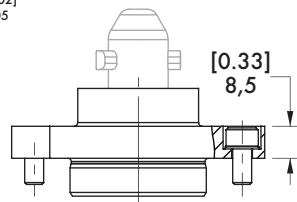
## A Standard Support/ D Chamfered Support



for Pin Diameter - 04



S2  $[\pm 0.002]$   
 $\pm 0.05$

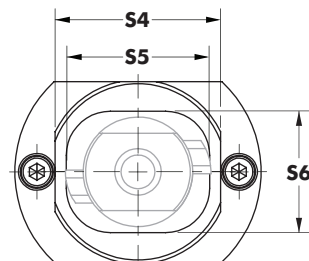
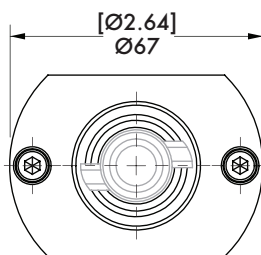


Chamfer Support Option D available for Pin Diameter 01 only.

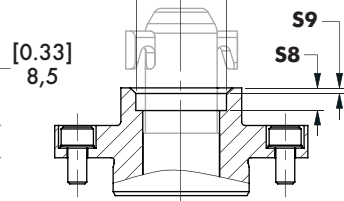
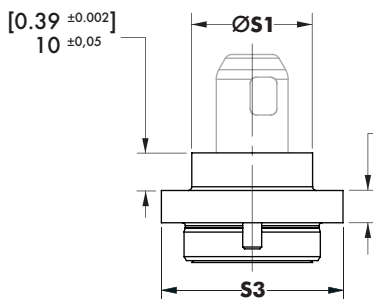


Pin Diameter	S1	S2 - Support Height			S3	S4
		0	1	2		
01						
02	32 [1.26]	10 [0.39]	--	--	48 [1.89]	--
03		--	--	100 [3.94]		
04	48 [1.89]	10 [0.39]	--	--	49 [1.93]	45 [1.77]
05	32 [1.26]		--	--	48 [1.89]	--

## B Drop Down Support



for Pin Diameter - 04, 06

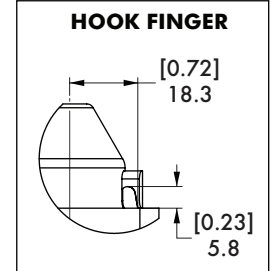
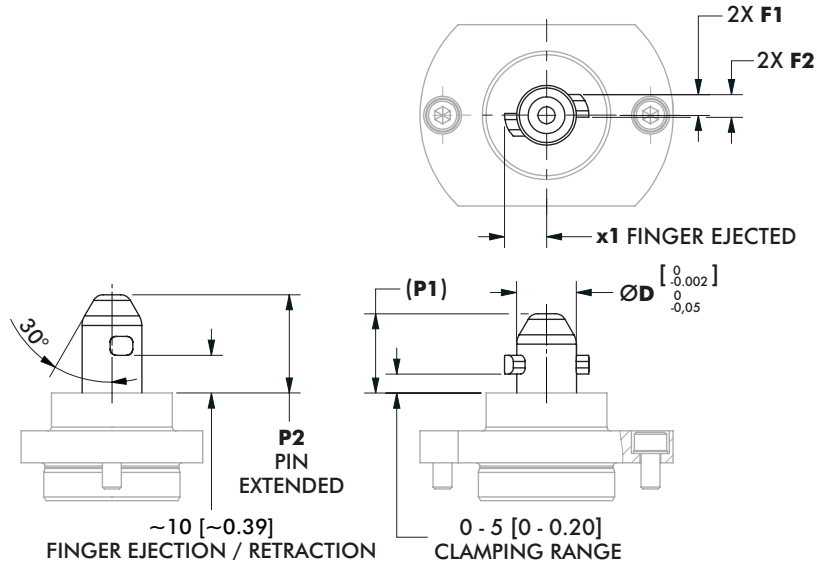


Pin Diameter	S1	S3	S4	S5	S6	S7	S8	S9
02	32 [1.26]	48 [1.89]	--	--	--	24 [0.94]	1,5 [0.06]	6 [0.24]
04	48 [1.89]	49 [1.93]	45 [1.77]	--	--	33,5 [1.32]	x 45°	6 [0.24]
06				39 [1.54]	33 [1.30]	--	--	8 [0.31]

# 82P50-1800 CENTERING PINS

## Pneumatic Centering Pin Clamps | Dimension

### 0 Standard Pin

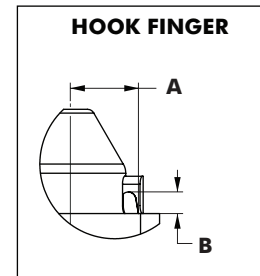
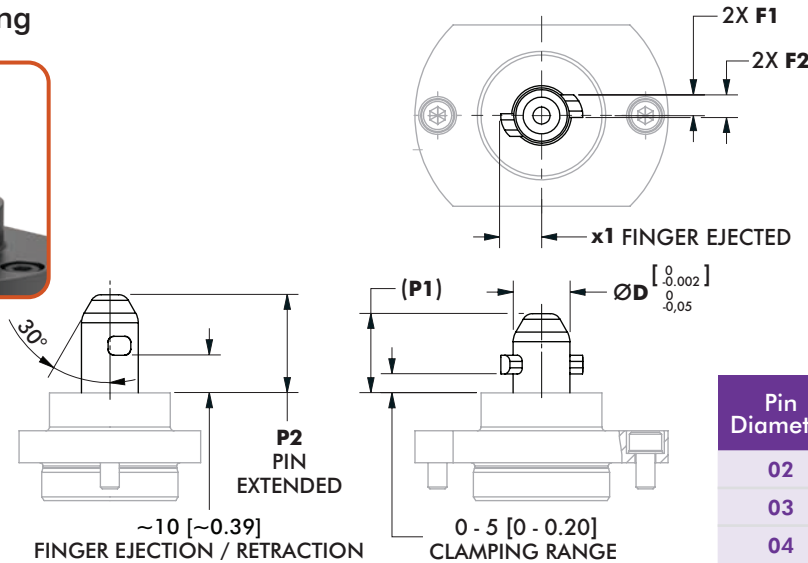


Pin Diameter	Support Shape
04	A, B

Pin Diameter	Support Shape	ØD	P1*	P2	F1	F2	x1
01	A, D	15,8 [0.62]			5,5 [0.22]	6 [0.24]	11,1 [0.44]
02	A	19,8 [0.78]	21 [0.83]	26 [1.02]	6,5 [0.26]	7 [0.28]	14,7 [0.58]
03	A	20,8 [0.82]			6,5 [0.26]	7 [0.28]	15,2 [0.60]
04	A, B	29,8 [1.17]	33 [1.30]	38 [1.50]	8,5 [0.33]	9 [0.35]	19,7 [0.78]
05	A	15,5 [0.61]	21 [0.83]	26 [1.02]	5,5 [0.22]	6 [0.24]	11,1 [0.44]

\*retracted position at the start of clamping range (5 [0.20])

### 1 Pin Clipping



Pin Diameter	Support Shape	A	B
02	B	13,5 [0.53]	
03	A	13,6 [0.54]	6 [0.24]
04	A	18,3 [0.72]	5,8 [0.23]

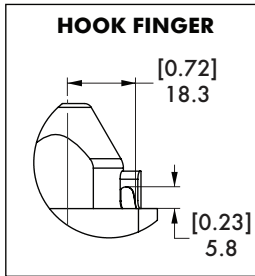
Pin Diameter	Support Shape	ØD	P1*	P2	F1	F2	x1
01	A, D	15 [0.59]			5,5 [0.22]	6 [0.24]	10,8 [0.43]
02	B	19 [0.75]	21 [0.83]	26 [1.02]	6,5 [0.26]	7 [0.28]	14,7 [0.58]
03	A	20 [0.79]			6,5 [0.26]	7 [0.28]	15,2 [0.60]
04	A	29 [1.14]	33 [1.30]	38 [1.50]	8,5 [0.33]	9 [0.35]	19,7 [0.78]

\*retracted position at the start of clamping range (5 [0.20])

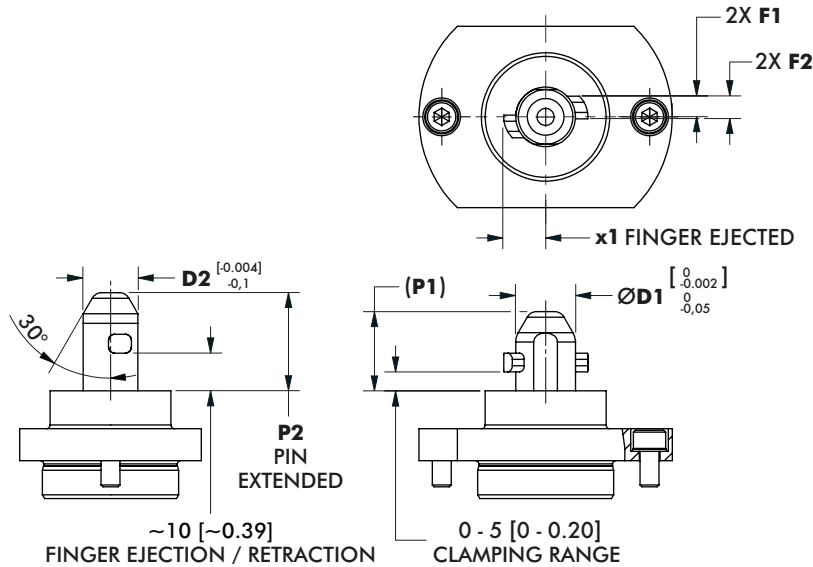
# 82P50-1800 CENTERING PINS

Pneumatic Centering Pin Clamps | Dimension

## 3 Pin Release on Flat Parallel of Finger



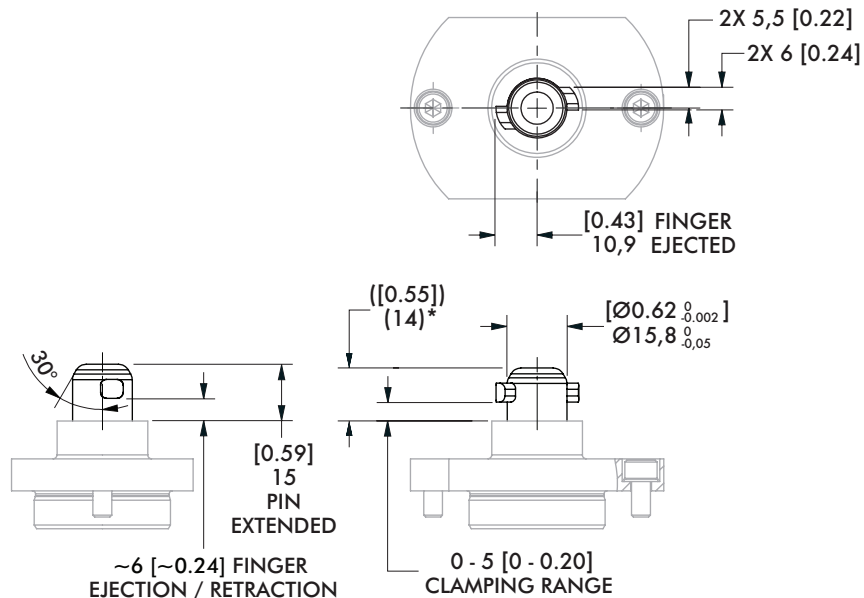
Pin Diameter	Support Shape
06	B



Pin Diameter	Support Shape	ØD1	D2	P1*	P2	F1	F2	x1
01	A, D	15,8 [0.62]	14,5 [0.57]	21 [0.83]	26 [1.02]	5,5 [0.22]	6 [0.24]	11,1 [0.44]
04	A	29,8 [1.17]	21 [0.83]	33 [1.30]	38 [1.50]	8,5 [0.33]	9 [0.35]	19,7 [0.78]
06	B							

\*retracted position at the start of clamping range (5 [0.20])

## 4 Door Case



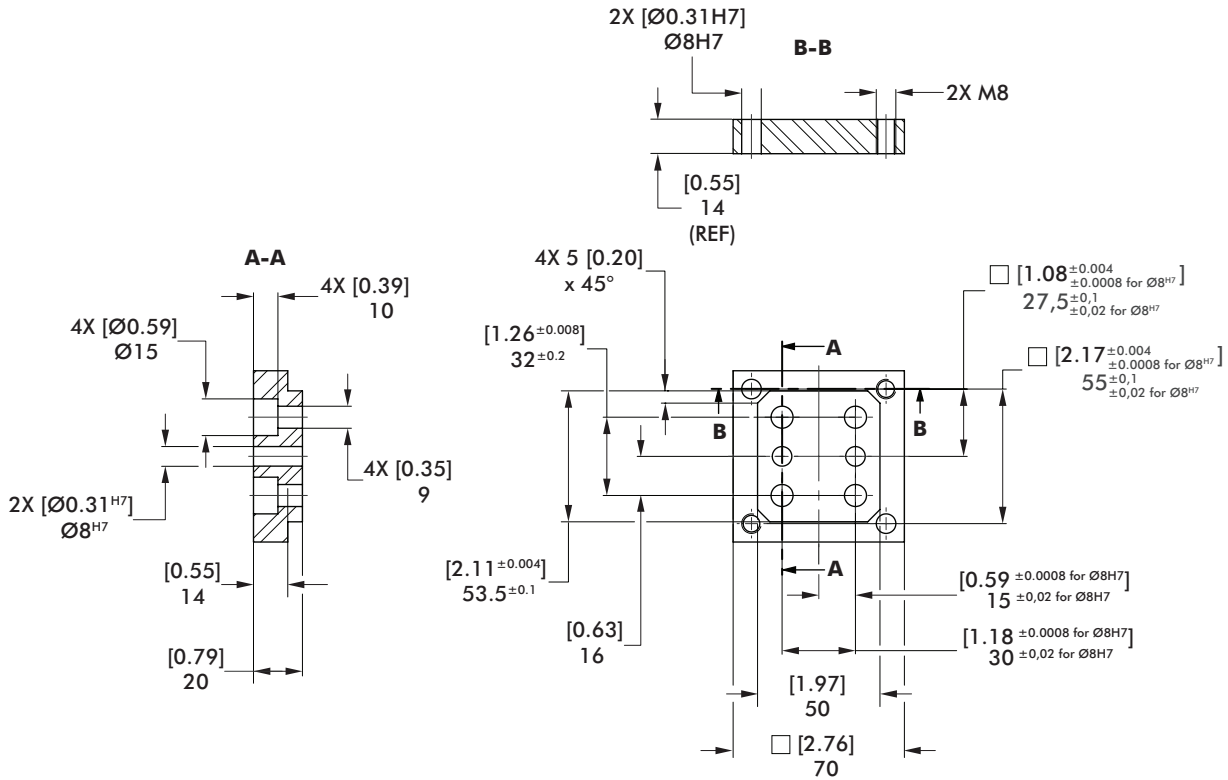
Pin Diameter	Support Shape
01	A

\*retracted position at the start of clamping range (5 [0.20])

# 82P50-1800

Pneumatic Centering Pin Clamp | Tolerance Compensation | Dimensions and How To Order

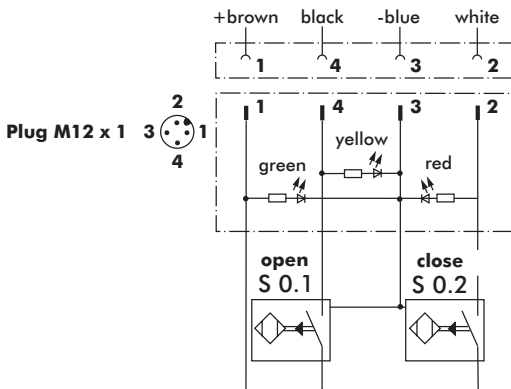
## CNOMO Adapter



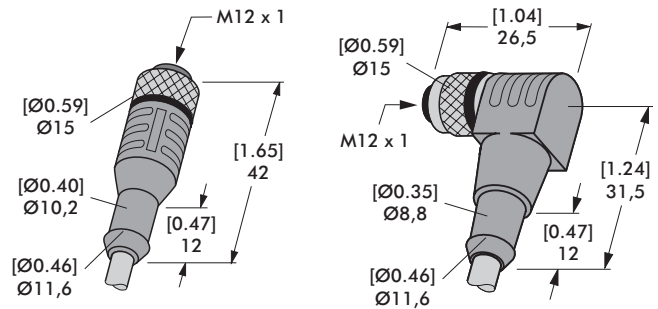
Accessory	Order no.
CNOMO Adapter	8MA-538-1

## Inductive Sensor Wiring Diagram

Sensing system immune to interference from AC / DC arc welding.



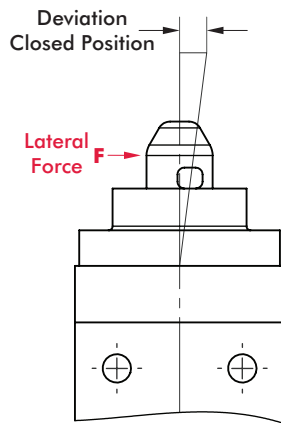
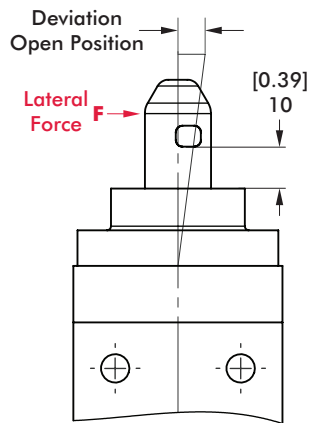
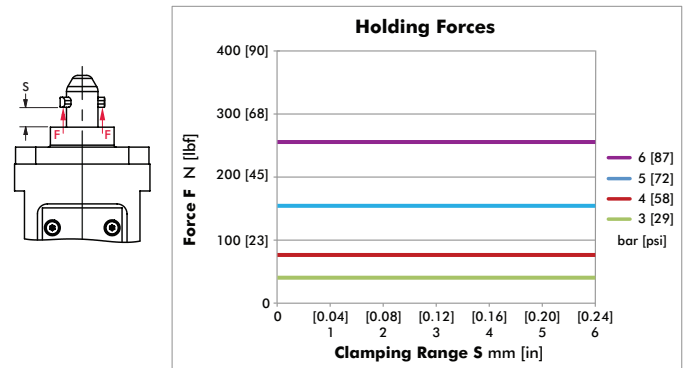
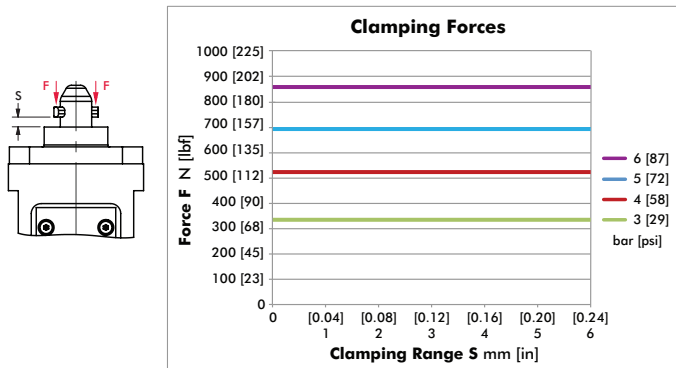
## Sensor Cable Accessories



Straight Cable  
8EL-002-1

Angular Cable  
8EL-003-1

Sensor Cables (1 connector & 5m cable)	Order no.
M12x1 connector, straight, 5-pin	8EL-002-1
M12x1 connector, 90° angular, 4-pin	8EL-003-1



### Max Deviation for Centering Pin

Deviation is at the maximum for support height 10 mm [0.39 in].  
Higher supports have an increased guiding length.

Model no.	Position	Lateral Force F N [lbf]	Deviation $\pm$ mm [in]
82P50-1800	Open	100 [23]	0,032 [0.0013]
	Closed		0,023 [0.0009]