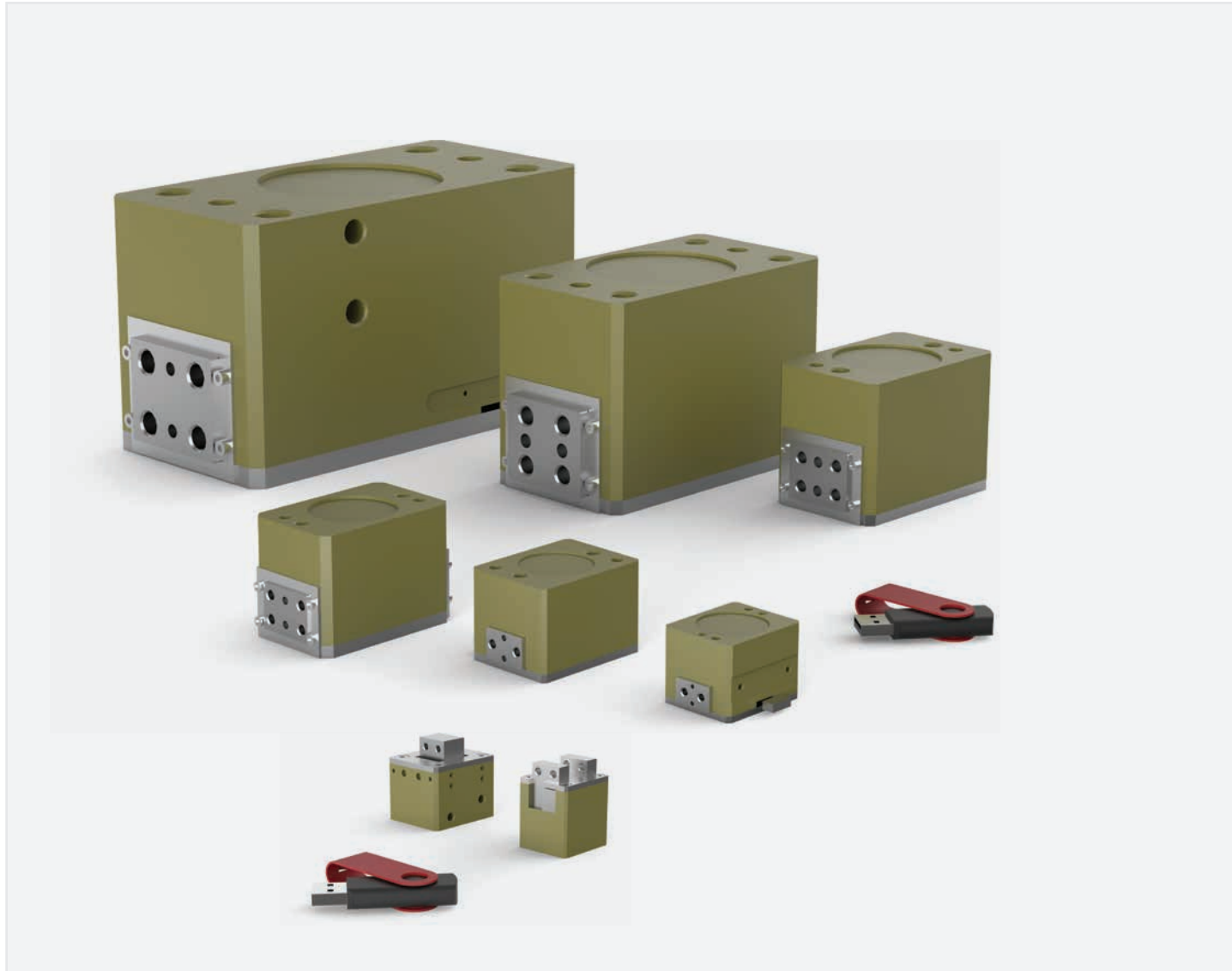


## Service Manual

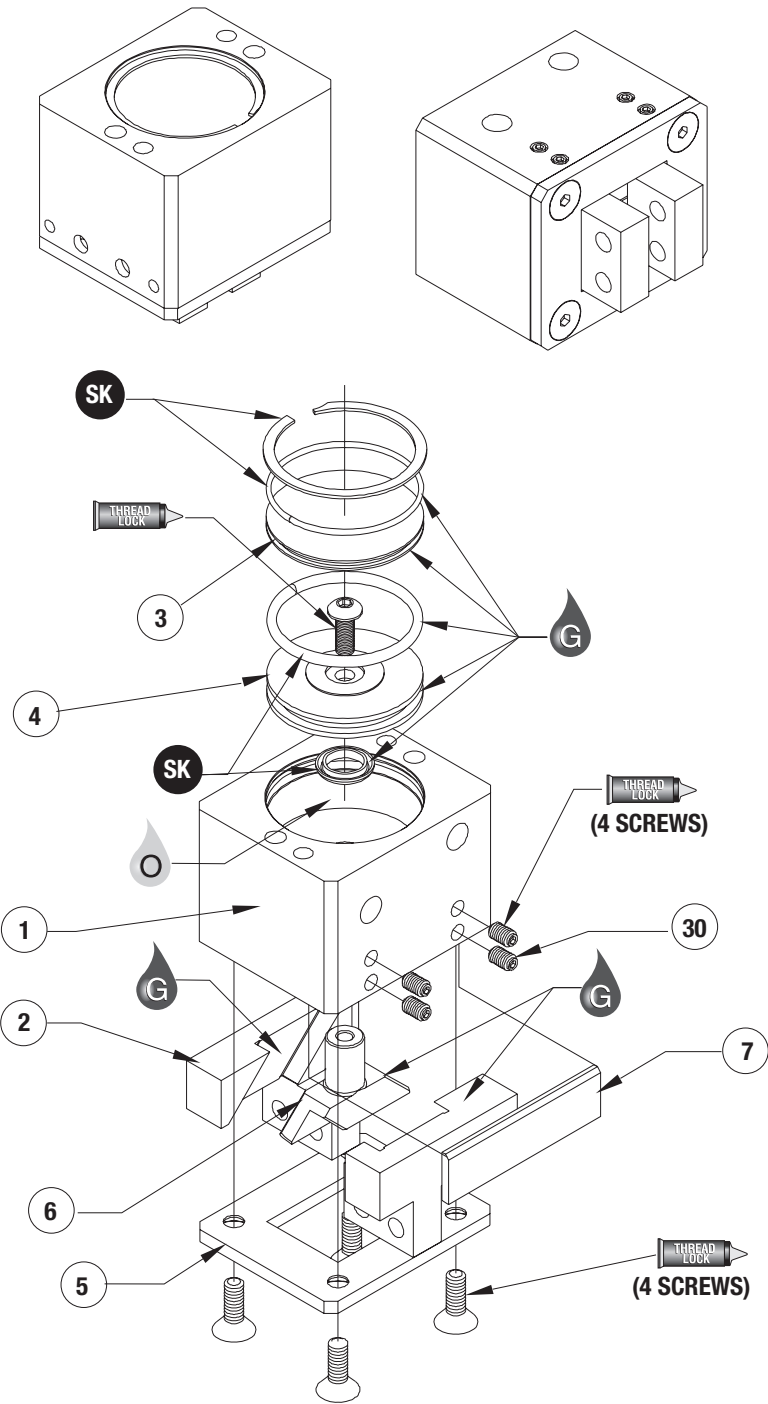
### **ROBOHAND** | RP Series



WARNING: This is a controlled document. It is your responsibility to deliver this information to the end user of the DESTACO Robohand product. Failure to deliver this could result in your liability for injury to the user or damage to the machine. For copies of this manual, call your Customer Service Representative at 1.248.836.6700

# RP-5, 10 SERIES

## Parallel Grippers | Maintenance and Assembly Procedure



Item	Qty	Name
01	1	Body
02	2	Jaw
03	1	Cap
04	1	Piston
05	1	Plate,Bottom
06	1	Shaft/Wedge
07*	1	Gib
30*	4	SSS,Cup Point

\* RP-10 Only

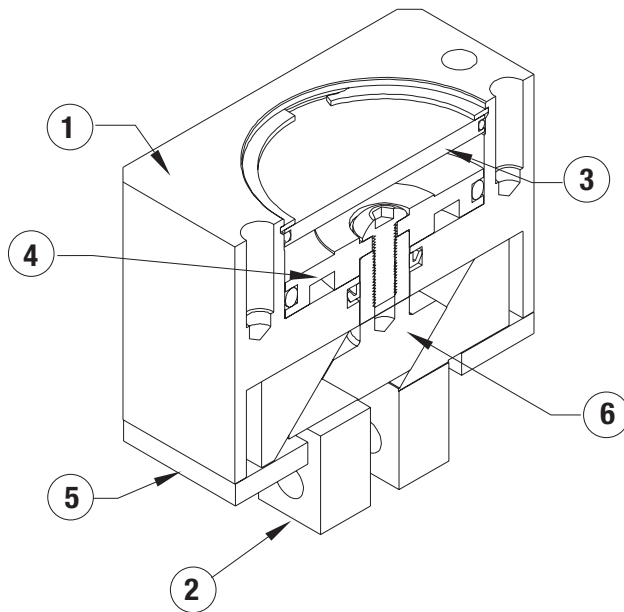
### Assembly Procedures

- 1) Lubricate and install seals.
- 2) Install piston into body.
- 3) Place wedge, jaws, and gib plate into body.
- 4) Attach bottom plate to body.
- 5) Install cap and retaining ring.

### Gib Adjustment Procedure

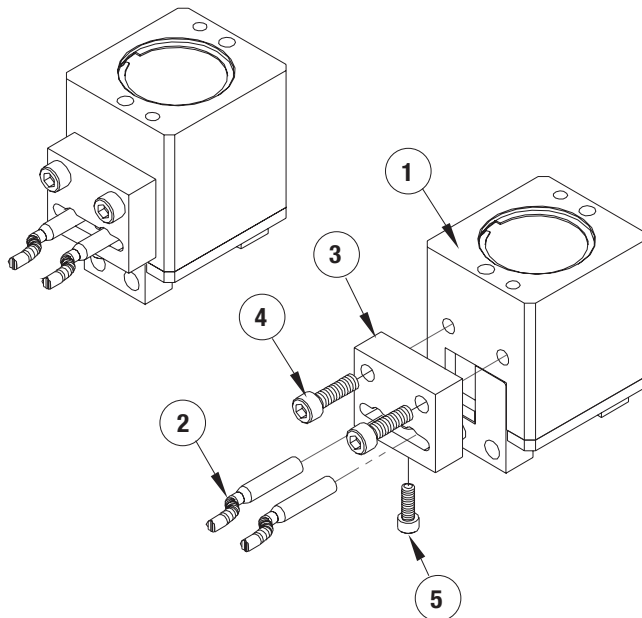
- 1) Tighten set screws (#30) so that they just touch the gib plate.
- 2) Cycle the gripper.
- 3) Adjust screws so that there is no play in jaws.

**SK** Seal Repair Kit Order #'s  
See Product Data Sheets



Item	Qty	Name
01	1	Body
02	2	Jaw
03	1	Cap
04	1	Piston
05	1	Plate, Bottom
06	1	Shaft/Wedge
07*	1	Gib
30*	4	SSS, Cup Point
* RP-10 Only		

### Accessory Installation & Adjustment Instructions



# RP-11, 12, 15, 17, 18, 19 SERIES

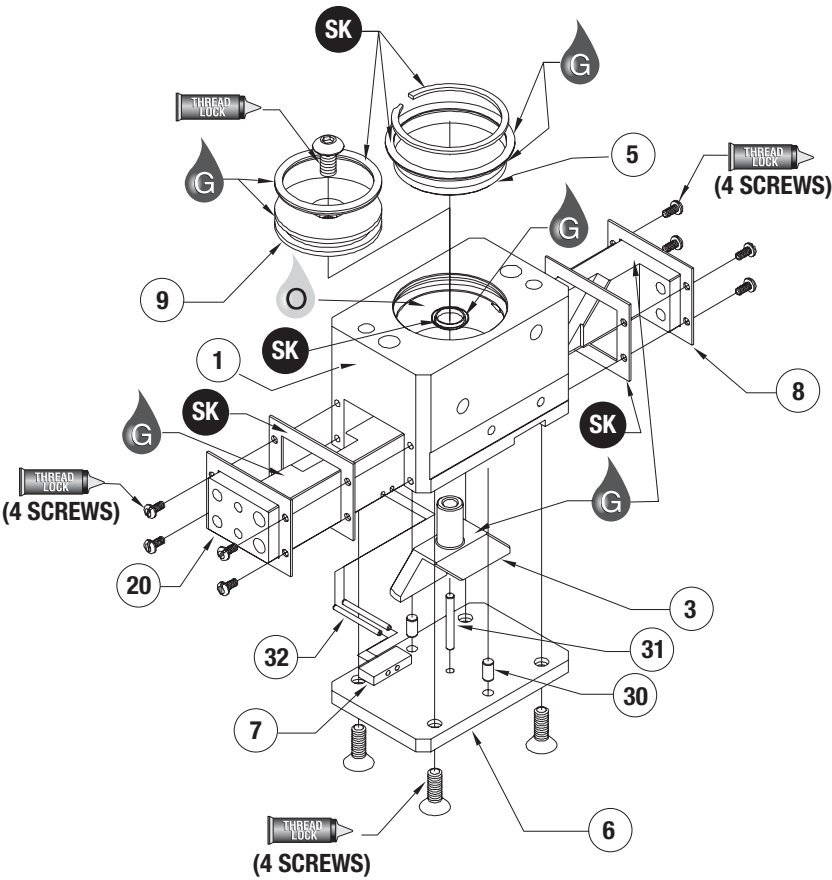
## Parallel Grippers | Maintenance and Assembly Procedure

Item	Qty	Name
01	1	Body
03	1	Shaft/Wedge
05	1	Cap
06	1	Plate, Bottom
07	1	Target
08	2	Plate, Seal
09	1	Piston
20	2	Jaw, Target Ready
30	2	Dowel Pin
31	1	Dowel Pin
32	2	Roll Pin

### Assembly Procedure

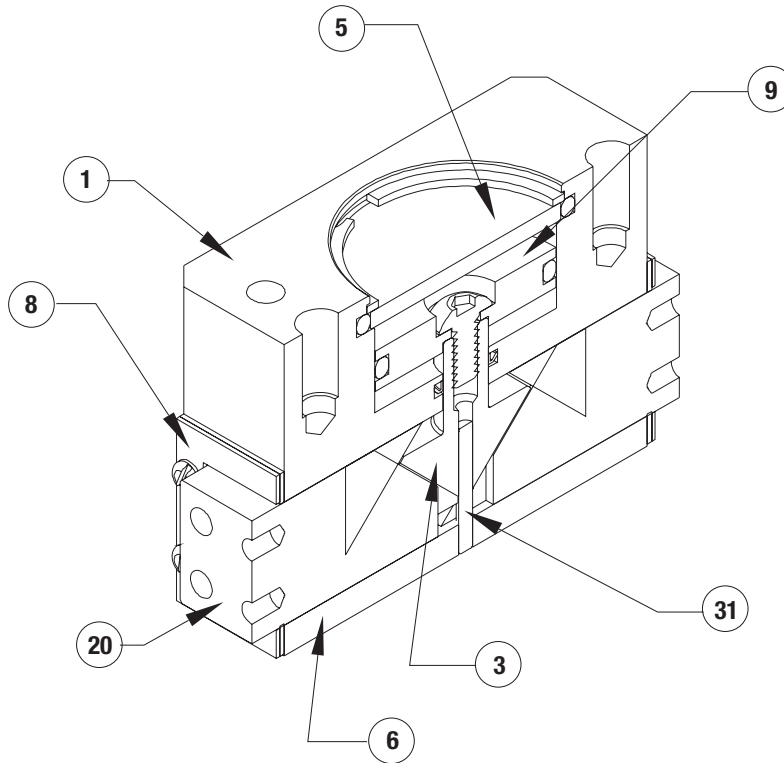
- 1) Lubricate and install seals.
- 2) Install target on one jaw.
- 3) Place wedge, shaft and jaws into body.
- 4) Install piston into body.
- 5) Install cap and retaining ring.
- 6) Attach bottom plate to body.

**SK Seal Repair Kit Order #'s**  
**See Product Data Sheets**



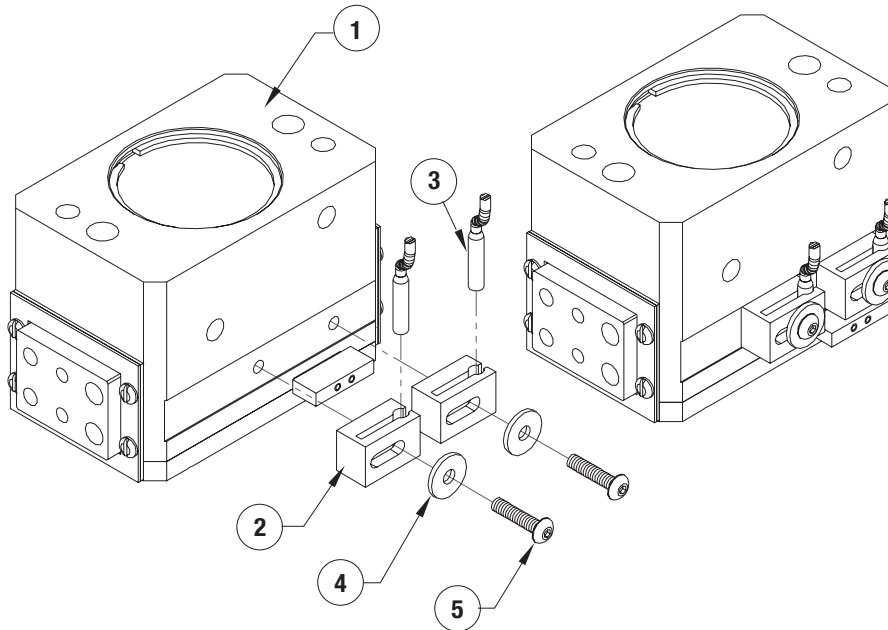
# RP-11, 12, 15, 17, 18, 19 SERIES

## Parallel Grippers | Maintenance and Assembly Procedure



Item	Qty	Name
01	1	Body
03	1	Shaft/Wedge
05	1	Cap
06	1	Plate, Bottom
07	1	Target
08	2	Plate, Seal
09	1	Piston
20	2	Jaw, Target Ready
30	2	Dowel Pin
31	1	Dowel Pin
32	2	Roll Pin

## Accessory Installation & Adjustment Instructions



### Installation

- 1) Install sensors as shown.
- 2) Adjust for desired end of stroke detection.

## GLOBAL SALES CONTACTS

### CORPORATE HEADQUARTERS



**US**

+1-888-DESTACO  
+1-248-836-6700  
northamerica@destaco.com

THE BEST PRODUCTS.  
UNMATCHED SERVICE.  
WORLDWIDE.



**DE**

+49-6171-705-0  
europe@destaco.com



**SP**

+34-936361680  
spain@destaco.com



**PL**

+48-506002115  
poland@destaco.com



**IN**

+91-80-41123421-426  
india@destaco.com



**MX**

mexico@destaco.com



**FR**

+33-4-7354-5001  
france@destaco.com



**CN**

+86-21-2411-2678  
china@destaco.com



**NL**

+31-297285332  
benelux@destaco.com



**SG**

singapore@destaco.com



**UK**

+44-1902-797980  
uk@destaco.com



**TH**

+66-2326-0812-6  
asia@destaco.com



**CZ**

+420-603-577-341  
czech@destaco.com



**CA**

canada@destaco.com

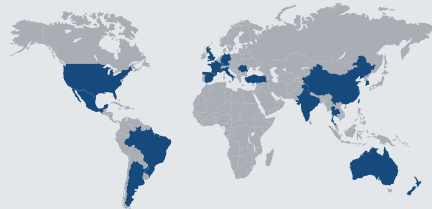


Click or Scan for  
the latest PDF version  
of this document.

Click or Scan  
to learn more  
about Stabilus.



**Industries**



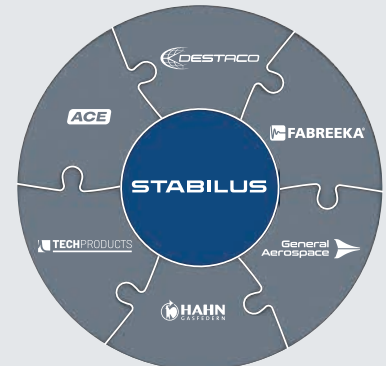
**45 Locations in 19 Countries**



**8K Employees**



**2024 Revenues**



**Expert Brands**