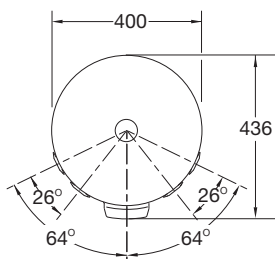
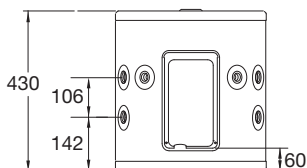


Features & Benefits

- Small diameter - 400mm
- Fast, easy like-for-like replacement
- Dual handed connections
- Plug & lead indoor models 2.4kW only
- 7 year cylinder warranty¹



MODEL	191025 191025/P
Hot Water Delivery (L)	25
Element Rating (kW)	2.4, 3.6
Relief Valve Pressure (kPa)	1400
Expansion Control Valve (kPa)	1200
Max Water Supply Pressure:	
with ECV (kPa)	960
without ECV (kPa)	1120
Water Connections	Rp 3/4
Approx. Weight (packaged) kg	18



Tap QR code for
installation
instructions

