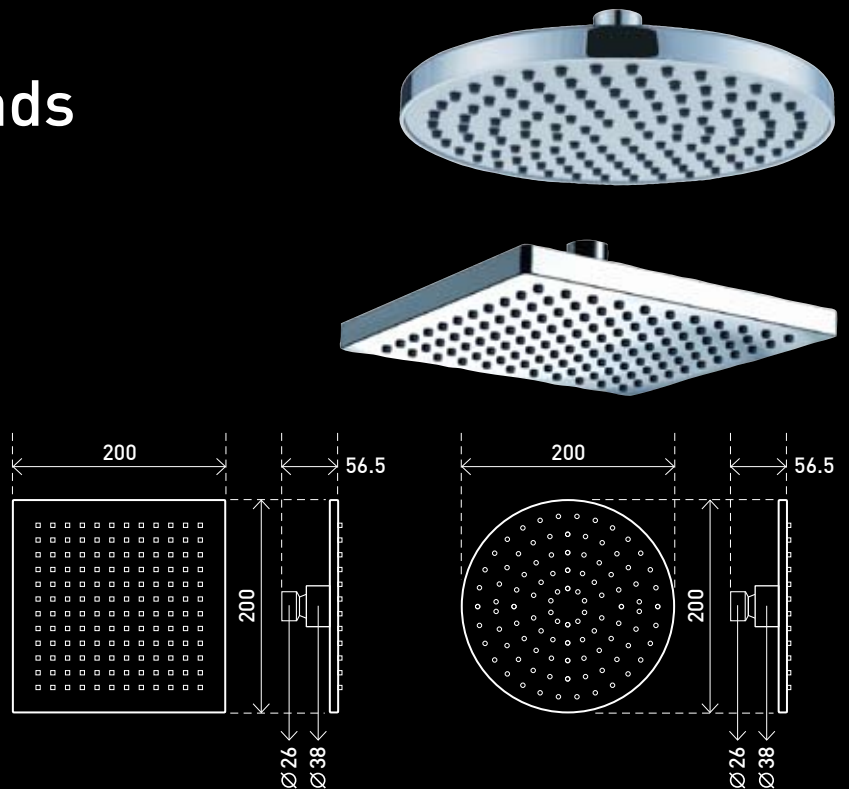


Unity square and round shower heads

The range of Unity showers has been designed to reflect stylish and modern simplicity. With sleek, elegant curves or contemporary square lines there is a choice of round or square vertical, horizontal or gooseneck arms to suit your individual needs.

A revitalizing shower experience with large 200mm diameter heads for maximum coverage.



Measurements shown are in millimetres

See our full range of fixed shower arm options on the back of this page

Specifications

Recommended Use: **Domestic / Commercial**

- Chrome plate finish
- Available in round or square
- Available in Brass or ABS
- WELS 3 star rating, 8.5 lt/min
- Australian standard certified
- 5 Year warranty

Code: **ASP1691** — Square shower head brass 200mm

Code: **ASP1692** — Round shower head brass 200mm

Code: **ASP1695** — Round shower head ABS 200mm

Code: **ASP1696** — Square shower head ABS 200mm

Models and specifications are current at the time of publication, subject to change without notice. Images are for pictorial purposes and should be used as a guide only.

Warranty

This product can be purchased from Burdens Bathrooms. This product is covered by a 5 year warranty. This warranty covers faults in the product construction and materials. Faulty products will be repaired or exchanged free of charge. Faulty items become property of Burdens Bathrooms.

This warranty does not include faults caused by:

- Improper or unsuitable use
- Incorrect installation
- Installation or part installation by the purchaser or any person other than a licensed plumber or tradesman
- Normal wear and tear
- Inadequate or complete lack of maintenance
- Chemical, electrochemical or electrical influences.

Cleaning Recommendations

Surfaces should not be cleaned with abrasive materials eg steel wool/scourers. Do not use any corrosive or abrasive cleaning agents containing acids or scouring agents.

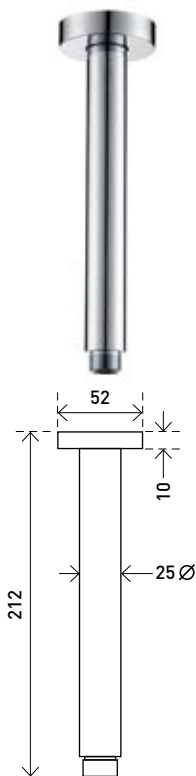
In the event of a warranty claim, Burdens Bathrooms will replace or repair defective products, or pay for the cost of having defective products repaired or replaced, but will not be liable for any injury to any person, damage to any property, any indirect or consequential loss, or in any other respect.

ASPIRE[®]

PRODUCT & PARTS
5
YEAR
REPLACEMENT WARRANTY



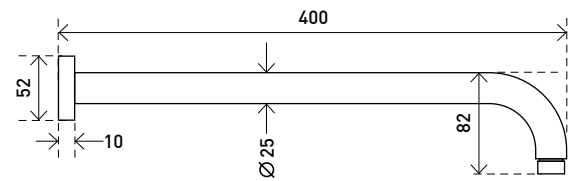
Product data sheet



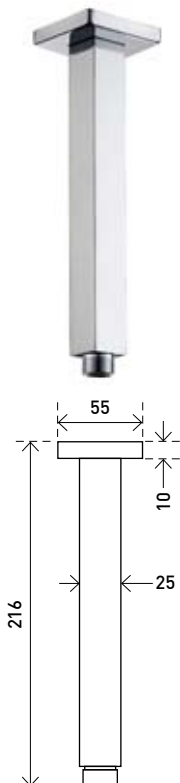
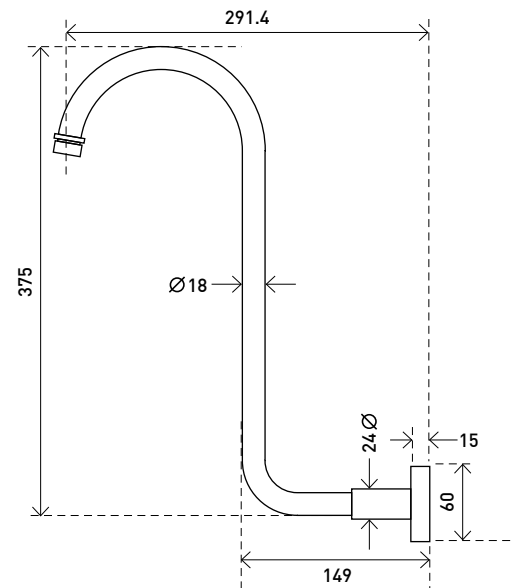
Code: **ASP1693**
Round brass vertical
ceiling dropper 200mm



Code: **ASP1693A** — Round brass horizontal wall arm 400mm



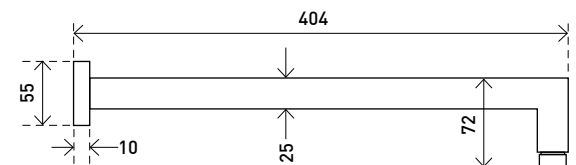
Code: **ASP1693B** — Round brass gooseneck arm



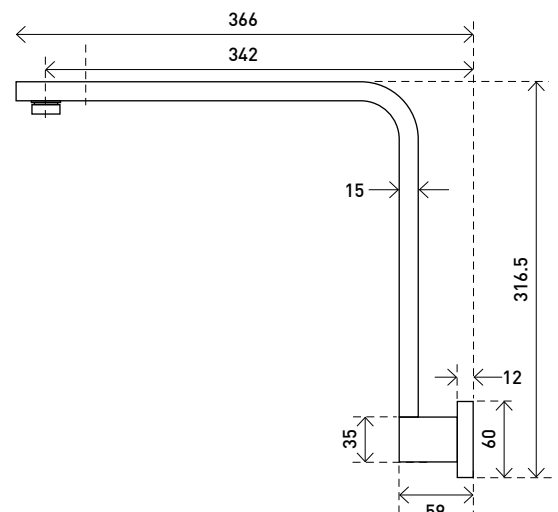
Code: **ASP1694**
Square brass vertical
ceiling dropper 200mm



Code: **ASP1694A** — Square brass horizontal wall arm 400mm



Code: **ASP1694B** — Square brass gooseneck arm



Measurements shown are in millimetres