

COMPAC 200 DRENA-LINE

CLEAR WATER DRAINAGE PUMP

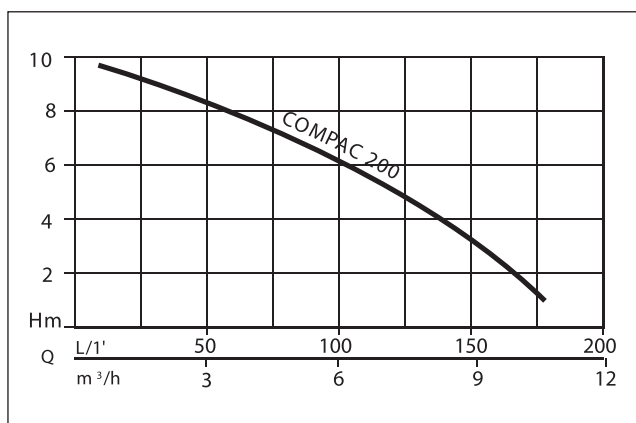
- Compact dimensions
- Continuous operation
- Intergrated float switch
- Manual-automatic switch
- Low level pumping
- Moisture sealed cable inlet
- Fluid temperature 40 °C
- Max. particle size 5 mm
- Max. submergence 7 m



DESCRIPTION

The Compac 200 submersible pump for clear water is designed for domestic use such as the drainage of infiltrated water, the collection of water from wells, basins or tanks. Check valve and hose connector adaptable for connections 3/4" MI and 1 1/4" FI BSP and hoses ø 25 & 32 mm, included in supply.

PERFORMANCE



Type	Delivery head H [m]	3	4	5	6	7	8	9
COMPAC 200	Flow rate Q [m³/h]	8.0	7.3	6.6	5.6	4.7	3.6	2.3

We reserve the right to change specifications without notice.

This data is represented in the performance curve as a limit of application.

COMPAC 200

CLEAR WATER DRAINAGE PUMP

SCOPE OF SUPPLY

Pump ready for connection 1/4" male connection with 1/4" socket and non-return valve, adapter to suit 3/4" MI BSP or hoses ø 25 & 32 mm, cable and plug, and integrated level float switch.

MECHANICAL DATA

Pump	Vertical single-stage
Free passage	5 mm
Bearing	Ball bearings, grease-lubricated
Seal on motor side	Rotary shaft seal
Oil chamber	Yes
Seal on medium side	2-fold rotary shaft seal
Run dry protection	Yes

Shaft	Stainless steel
Impeller	Vortex impeller, GFK
Motor housing	Stainless steel
Pump housing	Polypropylene
Submersible	Yes
Pressure outlet	1 1/4" MI

ELECTRICAL DATA

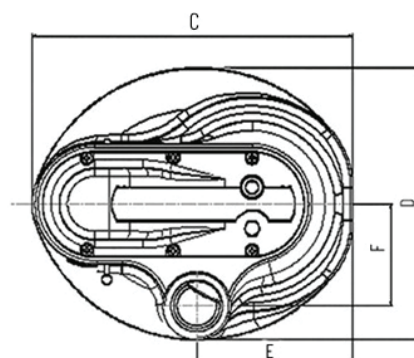
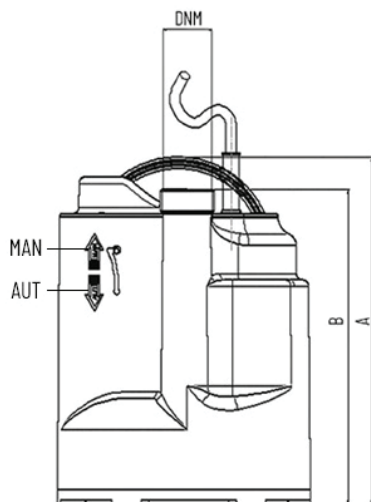
Voltage	1/N/PE~230 V
Motor rating P1	0.65 kW
Current	2.1 A
Type of enclosure	IP 68
Insulation class	F

Winding thermostat	Yes
Motor protection	Integrated
Plug	3 flat-pin ANZ

COMPAC 200

Type	Code No.	Power line	Wires	Weight
With built-in level control COMPAC 200, 10 m cable	N1080040-AU	10m H07RN8-F	3G1,0	4.7 kg

Dimensions and switching points COMPAC 200 (mm)



Type	A	B	C	D	E	F	DNM
COMPAC 200	273	148	200	170	97	63	1/4"
START LEVEL (Auto)				140			
STOP LEVEL (Auto)				30			
MIN.PRIMING LEVEL				15			
MIN. SUCTION LEVEL (Manual)				2			