

REMER

CAPSULE 450

LED SHAVING CABINET

SPECIFICATIONS

WIDTH	450mm
HEIGHT	900mm
DEPTH	143mm
WEIGHT	20kg
ORIENTATION	Portrait

LIGHTING SPECIFICATIONS

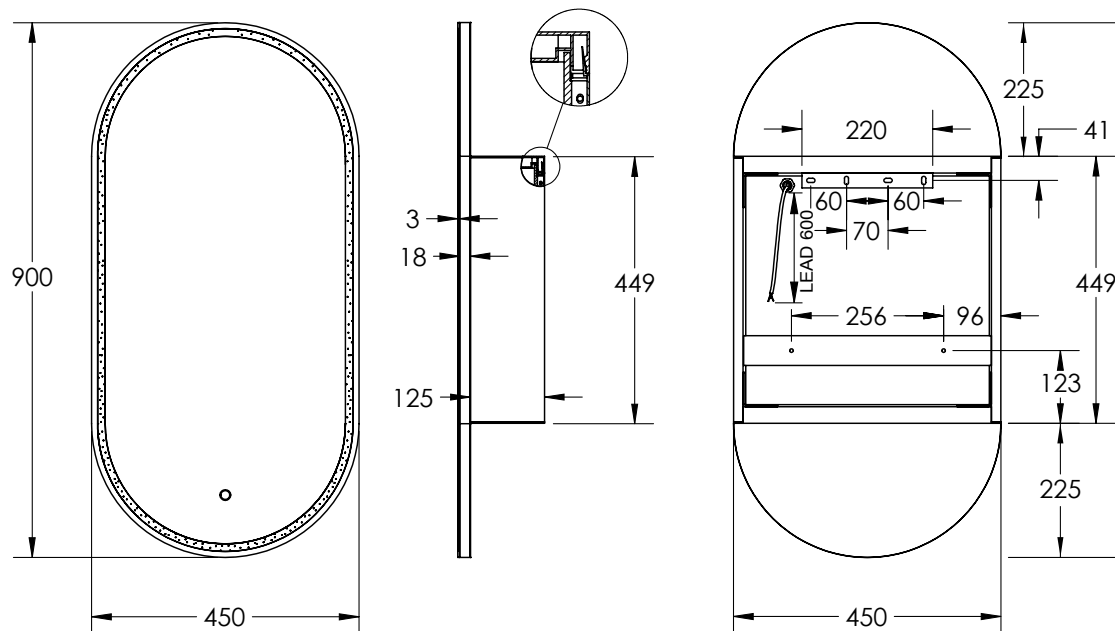
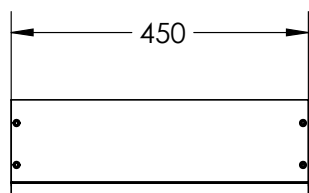
CCT	6500K – daylight
CRI	>80

INSTALLATION

Wall mount
 Hardwired
 Input voltage: 220-240v 50Hz
 Includes wall mount split batten
 Mounting holes are provided for semi-recessed mounting

FEATURES

Copper Free Mirror
 LED Lighting (6500K)
 Touch Sensor
 Demister
 Soft Close
 Concealed Wire Technology
 Adjustable Glass Shelf
 Single-Sided Mirror Door
 (door opens right to left)
 Recessable up to Door

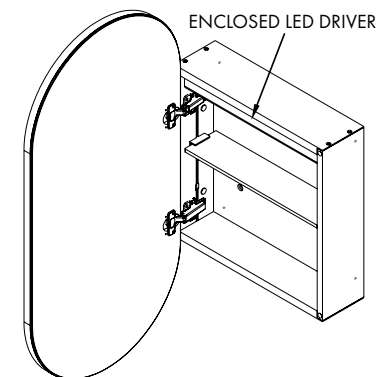


FINISH

White

PRODUCT CODE

CR45D



5 YEAR
 REPLACEMENT
 WARRANTY

Disclaimer: All LED Products requiring hardwiring must be installed by a licensed electrician in accordance with local regulations. Sizes are in mm and nominal and should be checked prior to installation. Actual colours may vary so please check colour samples before ordering. Installation is acceptance of our products. Installation of faulty, warped, chipped or damaged products will void our warranty.

13-15 Edison Road, Dandenong South VIC 3175
 T (03) 9706 6663 E sales@remer.com.au W remer.com.au

REMER

REMER

CAPSULE 450

LED SHAVING CABINET WITH ALUMINIUM FRAME

SPECIFICATIONS

WIDTH	504mm
HEIGHT	904mm
DEPTH	150mm
WEIGHT	25kg
ORIENTATION	Portrait

LIGHTING SPECIFICATIONS

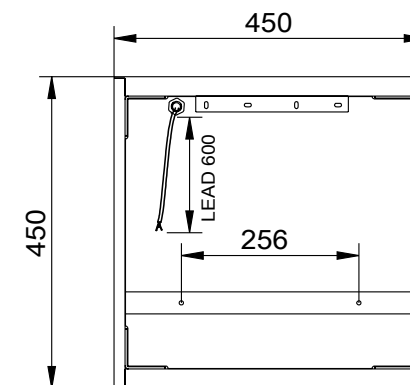
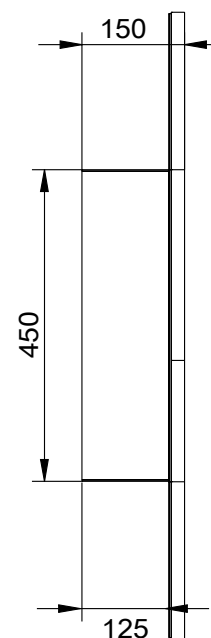
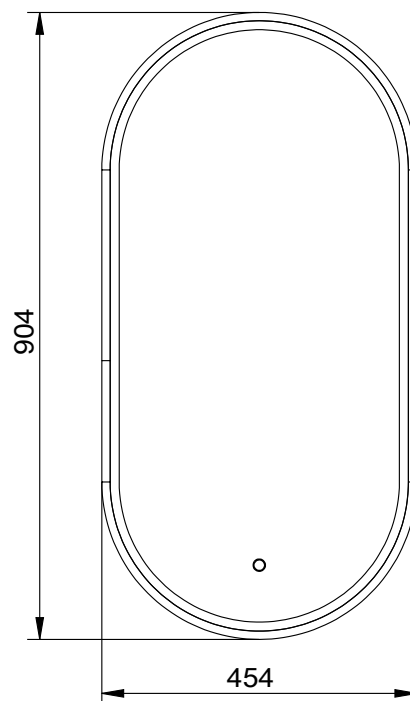
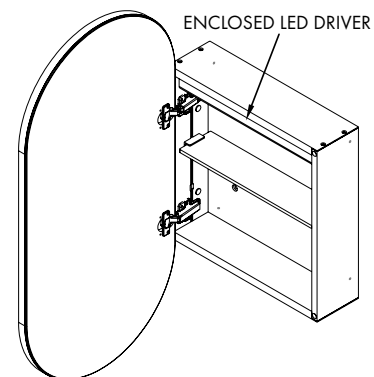
CCT	6500K – daylight
CRI	>80

INSTALLATION

Wall mount
 Hardwired
 Input voltage: 220-240v 50Hz
 Includes wall mount split batten
 Mounting holes are provided for semi-recessed mounting

FEATURES

Copper Free Mirror
 LED Lighting (6500K)
 Touch Sensor
 Demister
 Soft Close
 Concealed Wire Technology
 Adjustable Glass Shelf
 Single-Sided Mirror Door
 (door opens right to left)
 Recessable up to Door



FINISH		PRODUCT CODE
Baltic Brass		CR45D-BB
Brits Nickel		CR45D-BN
Cuban Bronze		CR45D-CB
Georgian Metal		CR45D-GM
Manhattan Black		CR45D-MB
Milano White		CR45D-MW
Nordic Gold		CR45D-NG



Disclaimer: All LED Products requiring hardwiring must be installed by a licensed electrician in accordance with local regulations. Sizes are in mm and nominal and should be checked prior to installation. Actual colours may vary so please check colour samples before ordering. Installation is acceptance of our products. Installation of faulty, warped, chipped or damaged products will void our warranty.

13-15 Edison Road, Dandenong South VIC 3175
 T (03) 9706 6663 E sales@remer.com.au W remer.com.au

REMER