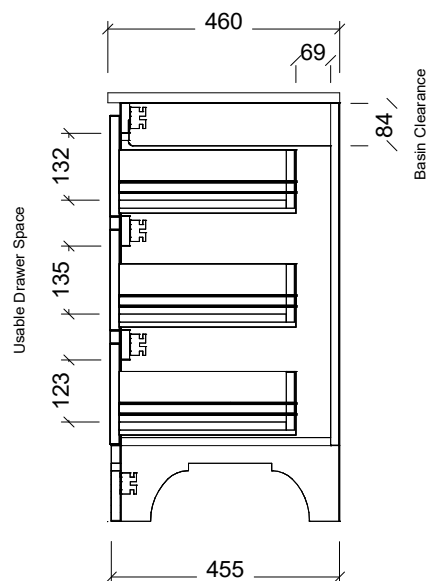
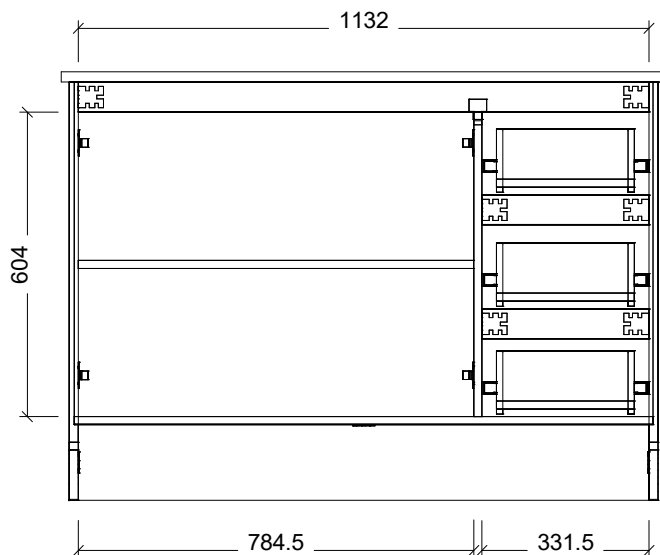


LH and RH Drawer Options Available



Range	Windsor
Mount	Floorstanding
Size	1200 Centre Bowl
SKU	WIN-VCO-1200-C-X-F

TOP DETAILS

Available Tops	1. Alpha Ceramic
	2. SilkSurface 20mm
	3. Stone 20mm
	4. Freedom SilkSurface 60mm
Top Notes	20mm Top shown

NOTES

Revision	01
Date	08/08/23

DIMENSIONS SHOWN ARE IN MILLIMETERS, ARE NOMINAL ONLY AND SUBJECT TO CHANGE AT ANY TIME.
DO NOT SCALE DRAWINGS. INSTALLER TO CONFIRM ALL DIMENSIONS ON-SITE PRIOR TO INSTALL.
SIZE VARIATION (+/- 3%) IS TO BE EXPECTED ON CERAMIC TOPS.
E&OE.

Copyright ©

Timberline

22 Myrtle Drive, Armidale NSW 2350
www.timberline.com.au
02 6773 8500