





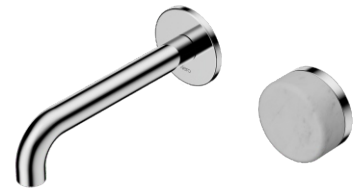


# Nero

## Serenity Progressive Wall Basin Mixer 160mm Spout With Carrara Handle

### Finish & SKU

 <b>Chrome</b> 24E061 CH	 <b>Brushed Nickel</b> 24E061 BN
 <b>Matte Black</b> 24E061 MB	 <b>Brushed Gold</b> 24E061 BG
 <b>Brushed Bronze</b> 24E061 BZ	 <b>Gun Metal</b> 24E061 GM



### Specifications

#### Watermark License

WM-060073

#### Temperature Rating

Min 1°C-Max 75°C

#### Pressure Rating

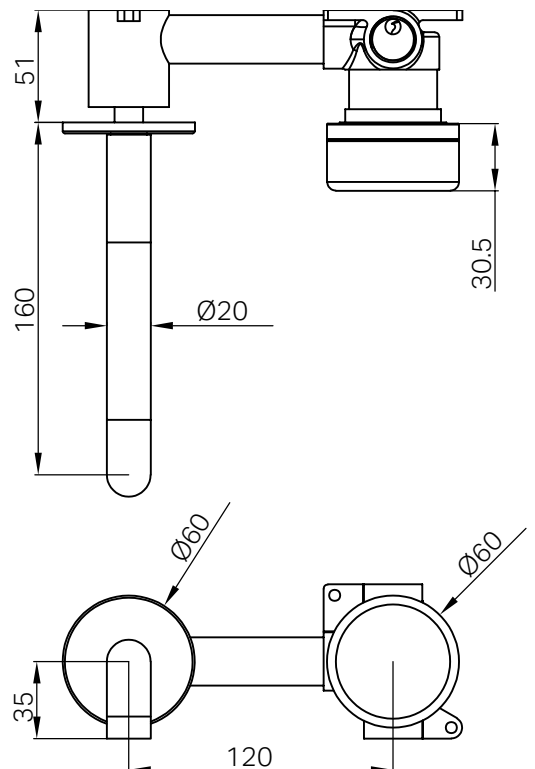
Min 150kpa-Max 500kpa



Lead Free

### Features

- A complete wall basin mixer set, including Body and Trim Kit for a seamless installation.
- Features a sleek 160mm spout for a refined and functional design.
- Handle options include natural Italian marble (Carrara, Rome Travertine, Marquina Black) and customizable selections (Verde Apli, Calacatta Viola, Arabescato), alongside a sleek Metal Handle.
- Equipped with a progressive cartridge for smooth water flow and precise temperature control.
- Available in six stunning finishes: Chrome, Matte Black, Brushed Nickel, Brushed Gold, Gun Metal, and Brushed Bronze.
- Note: This product is packaged with the Body and Trim Kit as separate components. Together, they form the complete Serenity Progressive Wall Basin Mixer. This packaging ensures flexibility during installation and shipping.



### Maintenance And Care

- Regularly check the mixer and connections for signs of wear or leaks.
- Clean the tap with mild soapy water to maintain its appearance, avoiding harsh chemicals and abrasive materials that may damage the finish.

- Dimensions are nominal measurements only.