

Zen SS316L Wall Basin/Bath Mixer 185/230mm Spout

Finish & SKU

	Brushed Bronze NR162210a(185/230)BZ		Graphite NR162210a(185/230)GR
	Brushed Gold NR162210a(185/230)BG		Brushed Nickel NR162210a(185/230)BN



Specifications

Watermark License

WM-060073

Temperature Rating

Min 1°C-Max 75°C

Pressure Rating

Min 150kpa-Max 500kpa

Features

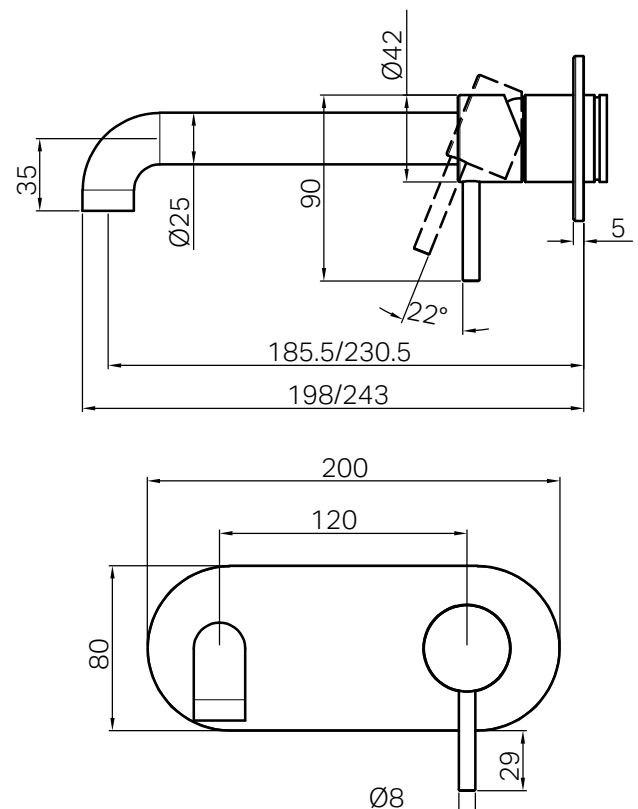
- 35mm ceramic disc cartridge can be adjusted to control water temperature and flow control settings, saving energy
- Solid 316L stainless steel construction for longevity
- Water inlets- 1/2 BSP female
- NEOPERL laminar aerator with slim stream flow director
- Suitable for mains pressure installation
- Replaceable trim kits
- Available in 2 different spout length
- Packed separately (Body and Trim Kits)

Maintenance And Care

- Regularly check the mixer and connections for signs of wear or leaks.
- Clean the tap with mild soapy water to maintain its appearance, avoiding harsh chemicals and abrasive materials that may damage the finish.



Lead Free



- Dimensions are nominal measurements only.