






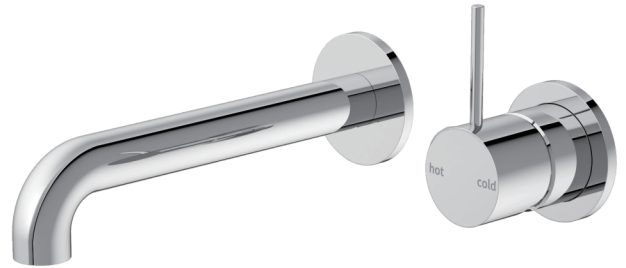


Nero

Mecca Wall Basin Mixer Separate Back Plate Handle Up 160/185/230mm Spout

Finish & SKU

-  **Chrome**
NR221907d185CH
-  **Matte Black**
NR221907d185MB
-  **Brushed Bronze**
NR221907d185BZ
-  **Matte White**
NR221907d(160/185/230)MW
-  **Brushed Nickel**
NR221907d185BN
-  **Brushed Gold**
NR221907d(185/230)BG
-  **Gun Metal**
NR221907d(160/185/230)GM



Specifications

Watermark License

WM-060073

Temperature Rating

Min 1°C-Max 75°C

Pressure Rating

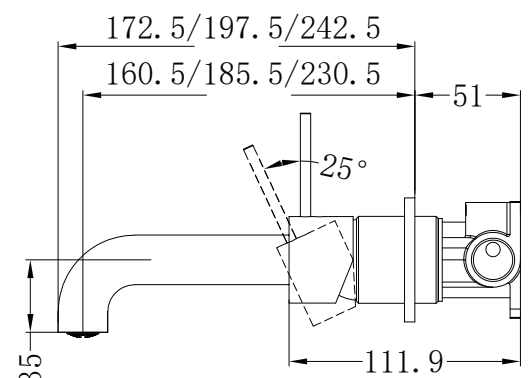
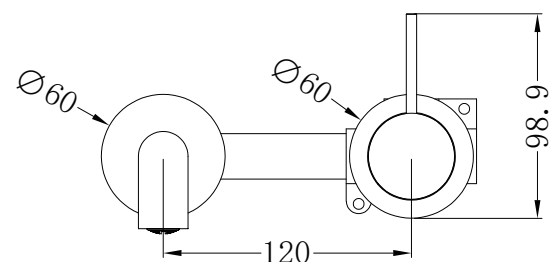
Min 150kpa-Max 500kpa

Warranty



Features

- 35mm ceramic disc cartridge can be adjust to reduce water temperature and flow control settings, saving energy
- Solid brass construction for longevity
- Incorporates brass lugs for easy of mounting
- Body inlets- 1/2 BSP female
- Suitable for mains pressure installation



Maintenance And Care

- Regularly check the mixer and connections for signs of wear or leaks.
- Clean the tap with mild soapy water to maintain its appearance, avoiding harsh chemicals and abrasive materials that may damage the finish.

- Dimensions are nominal measurements only.