

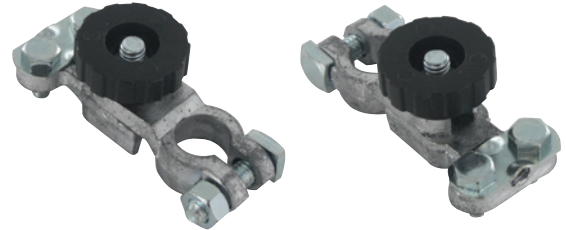
Battery Terminals

Top Post Battery Terminals (Quick Disconnect)

- Solderless • Fasteners included • Removable plate makes wire insertion easier
- Cable easily detaches from the battery for protection against theft and battery drain

Lead

GA Size	Polarity	1 PC/PK	10 PCS/PK
6-1GA	Universal	692578	762578



692578/762578

Top Post Battery Terminal (Quick Disconnect)

Top Post Battery Terminals (Straight/Angled Hook Up)

- Nickel Plated Brass • Allows for straight or angled hook-up to cable

Battery Terminal Only

GA Size	Polarity	1 PC/PK	10 PCS/PK
6-4GA	Universal (5/16") Stud	692573	762573



692573/762573

Battery Terminal + 2 Lugs with 5/16" Stud Size

GA Size	Polarity	1 SET/PK	10 SETS/PK
6-4GA	Universal (5/16") Stud	692574	762574



692574/762574

Side Post Battery Terminals

- Solderless • Fasteners included • Removable plate makes wire insertion easier

Lead

GA Size	Polarity/Description	1 Pair (2 PCS/PK)
6 - 2/0GA	Universal (5/16") Stud	762588



762588

Side Post Battery Terminals (Lead)

F