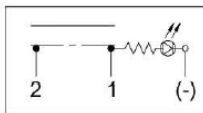


Battery Master Disconnect Switches (LED Indicator)



- 12-24VDC
- Ignition-Protected
- 3-Terminals
- Non-metallic, weather-resistant housing



Circuit Diagram



*765215

(Top View)



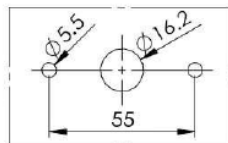
765215
Red LED Indicator
on Actuator

Push/Pull (Red LED Indicator)

*765215

*NEW

- SPST
- OFF-ON
- LED lights up continuously at all positions when power is inputted from Terminal 1 and only at the ON position when power is inputted from Terminal 2
- Continuous Rating: 150A @ 12VDC, 75A @ 24VDC
- Intermittent Rating: 225A @ 12VDC, 112A @ 24VDC (5 minutes)
- Crank Rating: 500A @ 12VDC, 400A @ 24VDC (10 seconds)
- IP56
- 2 x #12 Screw Terminals



Mounting Specifications (mm)

G



*765213

(Top View)



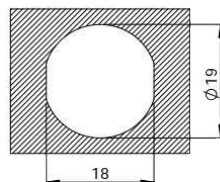
765213
Red LED Indicator
on Actuator

Rotating Lever (Red LED Indicator)

*765213

*NEW

- SPST
- OFF-ON
- LED lights up continuously at all positions when power is inputted from Terminal 1 and only at the ON position when power is inputted from Terminal 2
- Continuous Rating: 200A @ 12VDC, 100A @ 24VDC
- Intermittent Rating: 300A @ 12VDC, 150A @ 24VDC (5 minutes)
- Crank Rating: 1000A @ 12VDC, 800A @ 24VDC (10 seconds)
- IP66
- Knob is removable in the OFF position
- 3 Terminals (2 x 3/8" Screws, 1 x 1/4" Blade)



Mounting Specifications (mm)