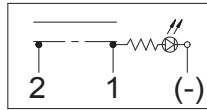


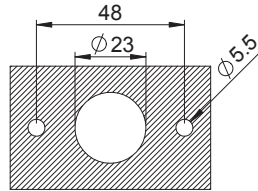
## Battery Master Disconnect Switches (Lighted)



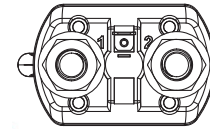
- LED lights up continuously at all positions when power is inputted from Terminal 1 and only at the ON position when power is inputted from Terminal 2
- Continuous Rating: 300A @ 12VDC, 150A @ 24VDC
- Intermittent Rating: 450A @ 12VDC, 225A @ 24VDC (5 minutes)
- Crank Rating: 1000A @ 12VDC, 800A @ 24VDC (10 seconds)
- IP66
- Ignition-Protected
- 3-Terminals
- Surface Mount
- Non-metallic, weather-resistant housing



Circuit Diagram



Mounting Specifications (mm)



Bottom View

## Emergency Stop Switch

### Push Button (Red LED Indicator)

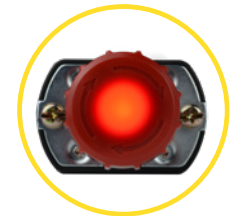
\*765229 **\*NEW**

- ON-OFF
- S.P.S.T
- 12-24VDC
- Knob is removable by turning it counter-clockwise from the OFF position
- 3 Terminals (2 x 3/8" Screws, 1 x 1/4" Blade)



\*765229

(Top View)



765229  
Red LED Indicator on Actuator



## Battery Master Disconnect Switch

### Turn Lever (Red LED Indicator)

\*765228 **\*NEW**

- ON-OFF
- S.P.S.T
- 12-24VDC
- Key is removable in the OFF position
- 3 Terminals (2 x 3/8" Screws, 1 x 1/4" Blade)



\*765228



765228  
Red LED Indicator on Actuator

\*765208 **\*NEW**

Replacement key for Part # 765214 & 765228

\*765208B **\*NEW**

Same as above, except 25 PCS/PK