

Trailer Connectors

7-Pole Connectors



- Continuous-Duty
- 40 amps continuous duty @ 6-28 VDC
- Meets & exceeds all rigid anti-skid standards of FMVSS-121, SAE J560 & ISO 1185. (SAE applies only to Solid Pin versions)
- Accepts the widest ranges of wires (16GA to 8GA)
- Optimum slant mount & drain slot ridrs housing interior of moisture
- Recommended Mounting Hole is 2" diameter
- Zinc Die-Cast Units are self-grounding (to #1 Ground Terminal)
- Available in Zinc Die-Cast Housing & Glass Filled Nylon
- High impact molded insulators have wire codes permanently molded into them for easy identification

Recommended Wire Gauge for 7-Pole Trailer Connections

#	Colour	Wire Ga	FMVSS 121 Anti-Lock Gauge	Description/Circuit
1	White	10	8	Ground Return
2	Black	12	12	Clearance, Side Marker & ID Lamps
3	Yellow	12	12	Left Turn & Hazard Signal
4	Red	12	10	Stop Lamps & Anti-Lock Devices
5	Green	12	12	Right Turn Signal & Hazard Signal
6	Brown	12	12	Tail, Rear Clearance Marker & Licence Plate Light
7	Blue	12	12	Auxiliary Circuit/ABS Power

764024



7-Pole Connectors (Zinc Die-Cast)

- Made in North America

Complete Assembly

Description	1 PC/PK
Plug & Socket (Split Pins, Wire Insertion Style)	764024

H

764026



764062



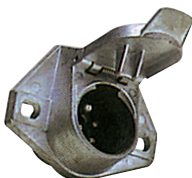
764029



Plugs

Description	1 PC/PK	25 PCS/PK
Plug	764026	
Plug with Cable Protector	764062	764062B
Plug with Cable Protector & Weather-Beater	764029	

764025



764027



Sockets (Wire Insertion Style)

Description	1 PC/PK	25 PCS/PK
Socket (Split Pins)	764025	764025B
Socket (Solid Pins)	764027	