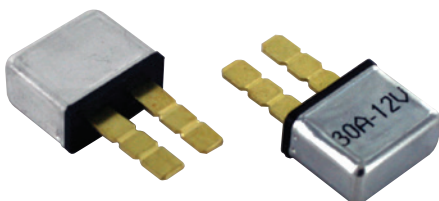


## Circuit Breakers



Circuit Breaker (Blade Terminals)

### Circuit Breakers (Blade Terminal)

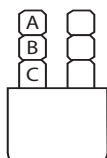
- 12VDC • Universal
- Metal Housing • Auto Reset
- Grooved terminals for easy size adjustment according to vehicle manufacturer requirements
- Heavy-duty replacement for standard blade fuses
- Conforms to SAE J553

Amperage	1 PC/PK	25 PCS/PK
10A	766070	766070B
15A	766071	766071B
20A	766072	766072B
25A	766067	766067B
30A	766073	766073B
40A	766068	766068B

Save time & money replacing burnt-out fuses



### Vehicle Replacement Guide



Terminal Position	Manufacture
Terminal Position A	Ford Pickup Trucks
Terminal Position B	Dodge Trucks Ford Trucks (Heavy) Navistar (IHC) Trucks
Terminal Position C	Kenworth Trucks

### Blade Type Circuit Breaker & Fuse Panels

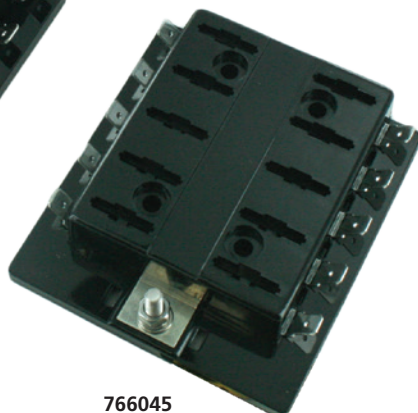
- For Blade Terminal Circuit Breakers & Standard Blade Fuses
- 0.250" Tab Blade Terminals
- #10-32 stud terminal with hex nut, flat washer and lock washer (Tin plated Copper)
- 4 x 5.5mm diameter mounting holes for #10 screws
- Dimensions: 3.38" W x 0.81" H
- Rugged, yet compact & lightweight construction (thermoplastic)
- Maximum amperage per circuit: 25A
- Maximum amperage per block: 100A
- Maximum Voltage: 32VDC



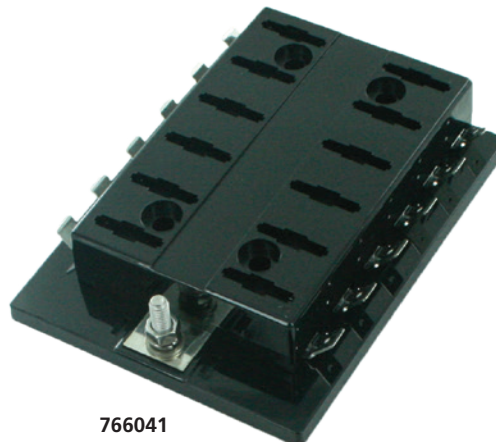
766043



766044



766045



766041

# of Positions	Length	1 PC/PK	25 PCS/PK
6	2.47"	766043	766043B
8	3.09"	766044	766044B
10	3.72"	766045	766045B
12	4.34"	766041	766041B