

Deutsch Connectors

Deutsch Connectors – HD20, HD30, DTHD Series'



763312 (0462-203-12141)

763313 (0460-204-12141)

HD20, HD30, DTHD Series': Contacts (Solid Barrel)

Type	Barrel Type	GA Size	Deutsch# (Contact)	10 PCS/PK	100 PCS/PK
Socket	Solid Barrel	14-12GA	0462-203-12141	763312	763312C
Pin	Solid Barrel	14-12GA	0460-204-12141	763313	763313C

Deutsch Connectors – Empty Cavity Plugs

Open cavities can provide pathways for contaminants to enter the connectors. To ensure integrity of the seal, fill any unused cavity with the appropriate size sealing plug.



*763368 (0413-204-2005)

763305 (114017)

Empty Cavity Plug

Deutsch#	Colour	GA Size Range	Contact Size	For Deutsch Series	10 PCS/PK	100 PCS/PK
0413-204-2005	Red	20-16GA	Size 20	HD30, HDP20, DTM	*763368	*763368C
114017	White	20-12GA	Size 16, 12	DT/DTP, Common Contact, Quick Connect, STRIKE, HD30, HDP20, DRC, WT, DTHD, DRB, etc.	763305	763305C

*NEW



Jiffy Splices

Jiffy Splices are a unique, field-serviceable alternative to permanent splices. Made from the same high quality silicone elastomer as Deutsch Connector seals and grommets, the Jiffy Splice houses a contact retention system that secures a mated pair of contacts in a compact environmentally sealed unit. Jiffy Splices accept one pin and one socket. They are easy to install and service with standard Deutsch tools.



*763416 (JS-16-00)



*763417 (JS-12-00)

Size	Deutsch#	Wire GA	Dimensions (L x Dia.)	Colour	10 PCS/PK
16	JS-16-00	20-14GA	62.61mm x 9.78mm	Red	*763416
12	JS-12-00	14-10GA	63.50mm x 12.70mm	Orange	*763417



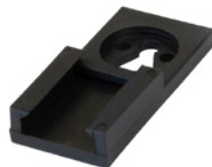
Mounting Accessories

Mechanically secures the receptacle portion of a Deutsch Connector assembly (for example a plug or receptacle with cavities) to a panel or bracket when direct flange mounting is not practical. Can be used with DT-series, DTM, DTP and DTHD connector housings.



*763413 (1011-026-0205)

Deutsch#	Colour	Mounting	10 PCS/PK
1011-026-0205	Grey	#10	*763413
1011-030-0205	Black	T-Stud	*763414
1011-310-0205	Black	Push-In Clip (Fir-Tree)	*763415



*763414 (1011-026-0205)



*763415 (1011-310-0205)