

Deutsch Connectors

'DT-Series' Detector Plug Housings, Wedgelocks, & Harnesses

Wedgelocks light up when power is activated in the circuit. Transparent housing allows light through for visual inspection.

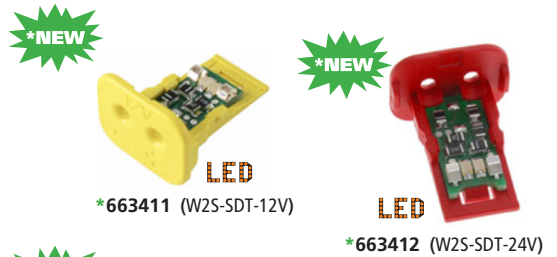
Housings

| Deutsch# | Colour | Features | 1 PC/PK |
|------------------|---------------------|-------------------------|---------|
| DT06-2S-SDT-CE28 | Clear (Transparent) | | *663409 |
| DT06-2S-SDT-CE27 | Clear (Transparent) | With Protective End Cap | *663410 |



Wedgelocks **LED**

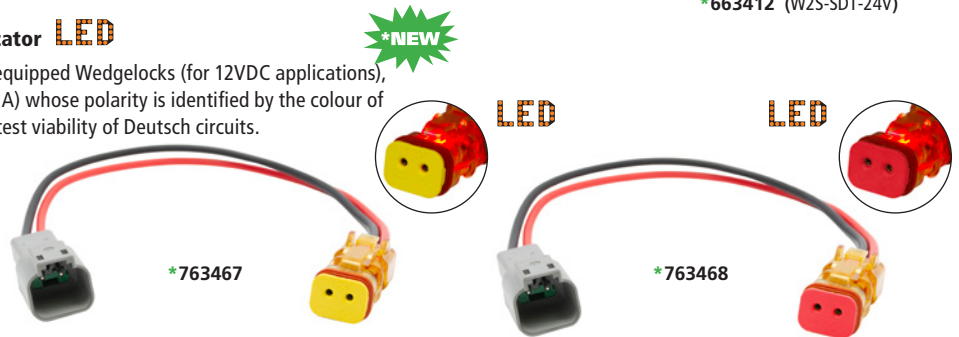
| Deutsch# | Colour | Voltage | 1 PC/PK |
|-------------|--------|---------|---------|
| W2S-SDT-12V | Yellow | 12VDC | *663411 |
| W2S-SDT-24V | Red | 24VDC | *663412 |



'DT-Series' Deutsch Harnesses with LED Indicator **LED**

Premade DT-Series Harnesses are made with LED-equipped Wedgelocks (for 12VDC applications), transparent plug housings and 12" wire leads (14GA) whose polarity is identified by the colour of the wire. Users can also utilize these harnesses to test viability of Deutsch circuits.

| Voltage | 1 PC/PK |
|---------|---------|
| 12VDC | *763467 |
| 24VDC | *763468 |

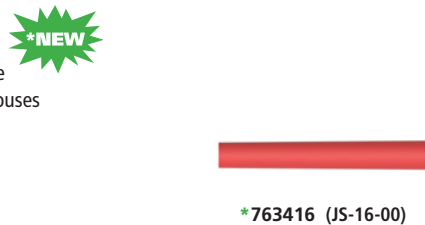


'DT-Series' Accessories

Jiffy Splices

Jiffy Splices are a unique, field-serviceable alternative to permanent splices. Made from the same high quality silicone elastomer as Deutsch Connector seals and grommets, the Jiffy Splice houses a contact retention system that secures a mated pair of contacts in a compact environmentally sealed unit. Jiffy Splices accept one pin and one socket. They are easy to install and service with standard Deutsch tools.

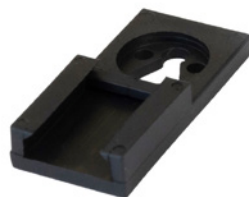
| Deutsch# | Size | Wire GA | Dimensions (L x Dia.) | Colour | 10 PCS/PK |
|----------|------|---------|-----------------------|--------|-----------|
| JS-16-00 | 16 | 20-14GA | 62.61mm x 9.78mm | Red | *763416 |



Mounting Accessories

Mechanically secures the receptacle portion of a Deutsch Connector assembly (for example a plug or receptacle with cavities) to a panel or bracket when direct flange mounting is not practical. Can be used with DT-series, DTM, DTP and DTHD connector housings.

| Deutsch# | Colour | Mounting | 10 PCS/PK |
|---------------|--------|-------------------------|-----------|
| 1011-026-0205 | Grey | #10 | *763413 |
| 1011-030-0205 | Black | T-Stud | *763414 |
| 1011-310-0205 | Black | Push-In Clip (Fir-Tree) | *763415 |



*763414 (1011-026-0205)



*763415 (1011-310-0205)