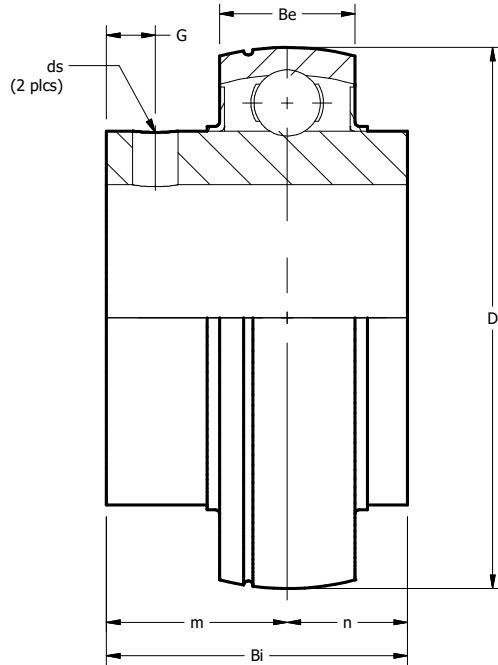


# MEDIUM DUTY UCX SERIES INSERT



BALL BEARINGS

For personal service 800.242.4633  
CAD drawings at no additional charge  
For nomenclature see pages 240 and 241

**MOLINE BEARING C<sup>o</sup>**



# MEDIUM DUTY UCX SERIES INSERT

## UCX Series Insert— Ball Bearing Set Screw Lock

SHAFT SIZE	MOLINE PART #	UNIT #	DIMENSIONS (INCHES)							WEIGHT LBS.
			D	Bi	Be	n	m	G	ds	
1	15403100	UCX 05-16	2.4409	1.500	.748	.626	.874	.236	¼-28	.85
1 ⅛	15403102	UCX 06-18	2.8346	1.689	.787	.689	1.000	.255	⅝-24	1.35
1 ⅜	15403103	UCX 06-19								1.20
1 ½	15403104	UCX 06-20								1.15
1 ⅜	15403106	UCX 07-22	3.1496	1.937	.826	.748	1.189	.315	⅝-24	1.60
1 ⅞	15403107	UCV 07-23								1.55
1 ½	15403108	UCX 08-24	3.3465	1.937	.866	.748	1.189	.315	⅝-24	1.85
1 ⅝	15403110	UCX 09-26	3.5433	2.031	.905	.748	1.283	.354	⅜-24	2.85
1 ⅞	15403111	UCX 09-27								2.10
2	15403112	UCX 09-28								2.00
1 ⅞	15403114	UCX 10-30	3.9370	2.189	.984	.874	1.315	.354	⅜-24	2.85
1 ⅞	15403115	UCX 10-31								2.70
2	15403200	UCX 10-32								2.60
2 ⅛	15403202	UCX 11-34	4.3307	2.563	1.063	1.000	1.563	.413	⅜-24	3.70
2 ⅜	15403203	UCX 11-35								3.60
2 ½	15403204	UCX 11-36								3.40
2 ⅜	15403206	UCX 12-38	4.7244	2.563	1.102	1.000	1.563	.472	⅜-24	4.35
2 ⅞	15403207	UCX 12-39								4.25
2 ½	15403208	UCX 13-40	4.9213	2.937	1.181	1.189	1.748	.472	⅞-20	5.25
2 ⅞	15403211	UCX 14-43	5.1181	3.063	1.181	1.311	1.752	.472	⅞-20	6.06
2 ⅞	15403215	UCX 15-47	5.5118	3.252	1.299	1.311	1.941	.552	⅞-20	7.20
3	15403300	UCX 15-48								7.00
3 ⅞	15403307	UCX 17-55	6.2992	3.779	1.456	1.563	2.216	.551	⅞-20	9.85
3 ½	15403308	UCX 18-56	6.6929	4.094	1.535	1.689	2.405	.551	⅞-18	12.60
3 ⅞	15403315	UCX 20-63	7.4803	4.626	1.732	1.937	2.689	.629	⅞-18	17.35
4	15403400	UCX 20-64								16.90

BALL BEARINGS

