

LA CROSSE®
TECHNOLOGY

10-INCH ATOMIC METAL WALL CLOCK



Model: 404-87696

Power Up

1. Select Time Zone and DST settings.
2. Insert one, AA battery into the Movement.
3. The hands will move to the 12 o'clock position and search for the WWVB Atomic Time Signal for up to 8 minutes.
 - If no signal after 8-10 minutes, the clock will run from 12:00.
 - Allow up to 5 nights to receive this transmission, the clock will continue to search for the WWVB signal on its own.
4. For the best reception, place the clock on an exterior wall near a window with the front or back of it facing Fort Collins, CO.

Watch the setup video: bit.ly/wallclock_setup

For information about WWVB, Atomic Time Signal visit: bit.ly/atomic_time

Note: In certain areas, this clock may not be able to receive the WWVB reception due to signal strength or interference. In this case, your clock can be set manually until the Atomic Time Signal can be received.

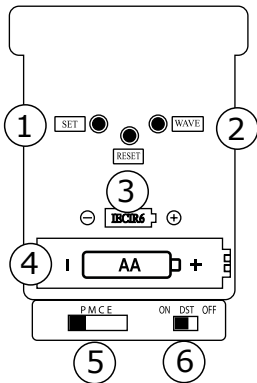
Manual Set Time

- Press and hold **SET** to move hands quickly to set the time.
- Press and release **SET** to move hands forward step by step.

Note: The Atomic Time Signal will override your manual setting if the transmission is received in the future.

Mounting

Use the integrated Hanging Hole on the back to mount the clock indoors on a wall.



- ① SET
- ② WAVE (Atomic search)
- ③ RESET
- ④ Battery Compartment (Required)
- ⑤ Time Zone Selector
P = Pacific
M = Mountain
C = Central
E = Eastern
- ⑥ Daylight Saving Time Selector
 - ON: DST All Year
 - OFF: Standard Time All Year

Reset Button

- If the clock does not respond when trying to manually set your time, press the **RESET** button one time.
- The hands will move to the 12 o'clock position and begin searching for the WWVB Signal again.

Specifications

Time Digit Height: 0.63 inch (1.60 cm)

Quartz Movement: Atomic

Atomic Time Zones: Pacific, Mountain, Central, Eastern

Lens: Glass

Construction: Glass, Metal, Plastic

Placement: Indoor

Mounting Type: Wall Mount

Numerals: Arabic

Power Requirements: 1 "AA" Alkaline Battery (Not Included)

Battery Life: 12+ Months (1 Battery)

Clock Face Diameter: 8.50 inch (21.6 cm)

Dimensions: 9.84 inch (25.0 cm) Diameter 1.57 inch (4.0 cm) Deep

Warranty Information

La Crosse Technology Ltd. provides a 1-year limited-time warranty on this product relating to manufacturing defects in materials & workmanship. Per the Song-Beverly Act, in the state of California, the warranty on this item becomes effective on the date of delivery.

La Crosse Technology, Ltd, 2830 S. 26th St., La Crosse, WI 54601

Self Help: bit.ly/404-87696_support

Online: bit.ly/contact_techsupport

For Full Warranty Details, Visit:

www.lacrossetechnology.com/pages/warranty

Patents:

www.lacrossetechnology.com/pages/patents

Scan for Information



Care and Maintenance

When batteries of different brand or type are used together, or new and old batteries are used together, some batteries may be over-discharged due to a difference of voltage or capacity. This can result in venting, leakage, and rupture and may cause personal injury.

- Do Not Mix Old and New Batteries.
- Do Not Mix Alkaline, Standard, or Rechargeable Batteries.
- Always purchase the correct size and grade of battery most suitable for the intended use.
- Clean the battery contacts and also those of the device prior to battery installation.
- Ensure the batteries are installed correctly with regard to polarity (+ and -).
- Remove batteries from product during periods of non-use. Battery leakage can cause corrosion and damage to this product.
- Remove used batteries promptly.
- For recycling and disposal of batteries, and to protect the environment, please check the internet or your local phone directory for local recycling centers and/or follow local government regulations.

Stay in Touch!

Ask questions, watch set up videos, and provide feedback on our social media outlets. Follow La Crosse Technology on YouTube, Facebook, and Instagram.



WARNING: This product can expose you to chemicals including acrylonitrile, 1, 3-butadiene, and styrene, which are known to the State of California to cause cancer and birth defects or other reproductive harm.

For more information go to: www.P65Warnings.ca.gov