

UTILITY LINEMAN

MANUAL TOOLS

PRESSES / PUMPS / ACCESSORIES

BUILT FOR
EVERYTHING
THAT'S ON
THE LINE.™

HUSKIETOOLS.COM



**Huskie
TOOLS®**

LINEMAN PROVEN
UTILITY APPROVED

SINCE 1976

A HALF-CENTURY OF PROVEN HIGH-PERFORMANCE UTILITY LINEMAN TOOLS & EQUIPMENT.

Born and Raised in Chicago nearly 50 years ago, Huskie Tools was started because of an industry need for better-engineered, longer-lasting, and safer linemen tools. Over the years, Huskie Tools has benchmarked itself as a category leader in providing the utility industry with an unmatched range of product solutions, including battery-powered cutting and crimping tools, presses, pumps, dies, manual tools, the TiiGER™ pole puller, and the Bulldog Bender™ for men & women working in all facets of the energy industry.

“Lineman, engineers, and facility managers are always interested in what Huskie Tools is working on next, be it our materials selection, product concepts, equipment engineering, training, or safety process controls; they are all important to the linemen community we proudly serve.” said Charlie Kelly, VP of Sales for Huskie Tools.


Whether above the ground or below the road, Huskie Tools is the top-tier North American manufacturer of crimping, cutting, bending, and pulling tools for the lineman industry and has been supplying state-of-the-art technology to these warriors of the weather & wire for many

years. Whether it’s standard installation, repairs & maintenance, grid upgrades, or cleaning up after a disaster, they have what it takes to get the job done right. Huskie Tools, industry-wide, is known for providing tool options that give you “The Power to Choose.”

From the Back of the Yards to the Monsters of the Midway, Chicago has always been a “City of Big Shoulders,” and Huskie Tools have been the tool of choice for the linemen and linewomen that “Get the Job Done!”. Huskie Tools was born and raised in the Windy City and continues to supply linemen in their quest to keep the power on!

**BUILT FOR
EVERYTHING
THAT’S ON
THE LINE.™**

**THE
POWER
TO CHOOSE**



“LINEMAN, ENGINEERS, AND FACILITY MANAGERS ARE ALWAYS INTERESTED IN WHAT HUSKIE TOOLS IS WORKING ON NEXT, BE IT OUR MATERIALS SELECTION, PRODUCT CONCEPTS, EQUIPMENT ENGINEERING, TRAINING, OR SAFETY PROCESS CONTROLS, THEY ARE ALL IMPORTANT TO THE LINEMEN COMMUNITY WE PROUDLY SERVE.”

CHARLIE KELLY, VP OF SALES
HUSKIE TOOLS

TABLE OF CONTENTS



MANUAL & HYDRAULIC CUTTING TOOLS **PG. 5**

- 8 LONG ARM MANUAL CUTTERS**
- 9 RATCHETING CABLE CUTTERS**
- 10 MANUAL HYDRAULIC CUTTING TOOLS**
- 14 REMOTE HYDRAULIC CUTTING HEADS**
- 18 HYDRAULIC C-FRAME PUNCH**



MANUAL & HYDRAULIC CRIMPING TOOLS **PG. 21**

- 24 MECHANICAL CRIMPING TOOLS**
- 25 MANUAL HYDRAULIC CRIMPING TOOLS**
- 27 REMOTE HYDRAULIC CRIMPING HEADS**



CRIMPING DIES **PG. 33**

- 35 HT58-SERIES & HT-SERIES**
- 36 HT41-SERIES**
- 37 HTK-SERIES & WIRE ROPES**
- 38 DIE CHART FOR COLOR CODE CONNECTORS**
- 39 HT61-SERIES & HA60-SERIES**
- 40 HA100-SERIES & DIE CASES**
- 41 DIE KITS**



HYDRAULIC PUMPS, CABLE GRIPS & ACCESSORIES **PG. 42**

- 43 HYDRAULIC PUMPS & REPLACEMENT OIL**
- 47 COUPLERS & HOSES**
- 48 PRESSURE GAUGES**
- 50 CABLE GRIPS**

64-4 | THE POWER TO CHOOSE.

MANUAL AND REMOTE-HYDRAULIC CUTTING TOOLS



MANUAL AND REMOTE-HYDRAULIC CUTTING TOOL REFERENCE GUIDE

	MODEL	COPPER / ALUM.	ASCR	GUY W
MANUAL SOFT METAL CUTTING	MXC-2100F	350 MCM Cu, 500 MCM Al	DO NOT CUT	DO NOT
	MXC-2600F	500 MCM Cu, 1000 MCM Al	DO NOT CUT	DO NOT
	MXC-3200F	750 MCM Cu, 1000 MCM Al	DO NOT CUT	DO NOT
	RI-500	750 MCM Cu / 1.25" Al	DO NOT CUT	DO NOT
	R-750C	750 MCM Cu 750 MCM Al	DO NOT CUT	DO NOT
MANUAL HYDRAULIC SOFT METAL CUTTING	S-85	Up To 3" DIA.	DO NOT CUT	DO NOT
REMOTE HYDRAULIC SOFT METAL CUTTING	YSP-34	800 MCM Cu, 1.25" Al	DO NOT CUT	DO NOT
	YSP-60	500 MCM Cu, 2.0" Al	DO NOT CUT	DO NOT
	SP-85	Up To 3" Cu/Al	DO NOT CUT	DO NOT
	SP-100	Up To 4" Cu/Al	DO NOT CUT	DO NOT
MANUAL HYDRAULIC HARD AND SOFT METAL CUTTING	S-16	up to 5/8"	up to 5/8" 4/0 MCM	up to 1/2" ST
	S-20	up to 3/4"	up to 3/4" 477 MCM	up to 1/2" ST
	JSHA-20	up to 3/4"	up to 3/4" 477 MCM	up to 1/2" ST
	S-240A	up to 7/8"	up to 7/8" 477 MCM	up to 5/8" ST
	S-240CC	DO NOT CUT	DO NOT CUT	up to 9/16"
	S-32	up to 1-1/4"	up to 1-1/4" 795 MCM	up to 7/8" ST
	S-32CC	DO NOT CUT	DO NOT CUT	up to 7/8"
	S-450A	up to 1-1/2"	up to 1-1/2" 1590 MCM	up to 5/8" ST
	S-550	up to 2"	up to 2" 2515 MCM	up to 3/4" ST
REMOTE HYDRAULIC HARD AND SOFT METAL CUTTING	YSP-30	MCM Cu / " Al	DO NOT CUT	DO NOT
	SP-20	up to 3/4"	up to 3/4" 477 MCM	up to 1/2" ST
	SP-24	up to 7/8"	up to 7/8" 477 MCM	up to 5/8" ST
	SP-24CC	DO NOT CUT	DO NOT CUT	up to 9/16"
	SP-32	up to 1-1/4"	up to 1-1/4" 795 MCM	up to 7/8" ST
	SP-32CC1	DO NOT CUT	DO NOT CUT	up to 7/8"
	SP-40	up to 1-1/2"	up to 1-1/2" 1590 MCM	up to 5/8" ST
	SP-55	up to 2"	up to 2" 2515 MCM	up to 3/4" ST

MANUAL AND REMOTE-HYDRAULIC CUTTING TOOL REFERENCE GUIDE

WIRE	WIRE ROPE	REBAR / GROUND ROD / BOLTS	CHAIN	TELECOM CABLE / LEAD SHEATH
DO NOT CUT	DO NOT CUT	DO NOT CUT	DO NOT CUT	DO NOT CUT
DO NOT CUT	DO NOT CUT	DO NOT CUT	DO NOT CUT	DO NOT CUT
DO NOT CUT	DO NOT CUT	DO NOT CUT	DO NOT CUT	DO NOT CUT
DO NOT CUT	DO NOT CUT	DO NOT CUT	DO NOT CUT	DO NOT CUT
DO NOT CUT	DO NOT CUT	DO NOT CUT	DO NOT CUT	DO NOT CUT
DO NOT CUT	DO NOT CUT	DO NOT CUT	DO NOT CUT	Up To 3.35" DIA.
DO NOT CUT	DO NOT CUT	DO NOT CUT	DO NOT CUT	DO NOT CUT
DO NOT CUT	DO NOT CUT	DO NOT CUT	DO NOT CUT	DO NOT CUT
DO NOT CUT	DO NOT CUT	DO NOT CUT	DO NOT CUT	Up To 3.35"
DO NOT CUT	DO NOT CUT	DO NOT CUT	DO NOT CUT	Up To 4.00"
STANDARD	up to 5/8"	up to 1/2"	DO NOT CUT	DO NOT CUT
STANDARD	up to 3/4"	up to 1/2"	DO NOT CUT	DO NOT CUT
STANDARD	up to 3/4"	up to 1/2"	DO NOT CUT	DO NOT CUT
STANDARD	up to 7/8"	up to 5/8"	DO NOT CUT	DO NOT CUT
5" EHS	DO NOT CUT	DO NOT CUT	up to 1/4"	DO NOT CUT
STANDARD	up to 1-1/4"	up to 7/8"	DO NOT CUT	DO NOT CUT
5" EHS	DO NOT CUT	DO NOT CUT	up to 1/2"	DO NOT CUT
STANDARD	up to 3/4"	up to 5/8"	DO NOT CUT	DO NOT CUT
STANDARD	up to 1"	up to 3/4"	DO NOT CUT	DO NOT CUT
DO NOT CUT	DO NOT CUT	DO NOT CUT	DO NOT CUT	DO NOT CUT
STANDARD	up to 3/4"	up to 1/2"	DO NOT CUT	DO NOT CUT
STANDARD	up to 7/8"	up to 5/8"	DO NOT CUT	DO NOT CUT
5" EHS	DO NOT CUT	DO NOT CUT	up to 1/4"	DO NOT CUT
STANDARD	up to 1-1/4"	up to 7/8"	DO NOT CUT	DO NOT CUT
5" EHS	DO NOT CUT	DO NOT CUT	up to 1/2"	DO NOT CUT
STANDARD	up to 3/4"	up to 5/8"	DO NOT CUT	DO NOT CUT
STANDARD	up to 1"	up to 3/4"	DO NOT CUT	DO NOT CUT

LONG ARM MANUAL CUTTERS

MXC-2100F, MXC-2600F & MXC-3200F

MXC-2100F
21" LONG ARM
MANUAL CUTTER



MXC-2600F
26" LONG ARM
MANUAL CUTTER



MXC-3200F
31" LONG ARM
MANUAL CUTTER



- Fast, clean cuts on Copper & Aluminum power and communication cables. Available in three handle lengths (21", 26", & 32"), these cutters cover a wide range of cable sizes up to 750 MCM Copper and 1000 MCM Aluminum. **DO NOT CUT ACSR AND STEEL CABLE.**

FEATURES

Strong lightweight fiberglass handles allow for easy two-hand control.

Precision ground shear-cut blades feature clean, even cutting action and provide minimal distortion allowing cables to fit easily into lugs and connectors.

Forged alloy-steel blades feature heavy-duty bolts and blade-stops for years of long-lasting performance.

SPECIFICATIONS	
MAX CUTTING CAPACITY	Cu: 350 MCM Al: 500 MCM
JAW OPENING	1.2 in. (30 mm)
LENGTH	21.1 in. (533 mm)
WEIGHT	3.8 lbs.

SPECIFICATIONS	
MAX CUTTING CAPACITY	Cu: 500 MCM Al: 1000 MCM
JAW OPENING	1.3 in. (32 mm)
LENGTH	26 in. (648 mm)
WEIGHT	5.5 lbs.

SPECIFICATIONS	
MAX CUTTING CAPACITY	Cu: 750 MCM Al: 1000 MCM
JAW OPENING	1.3 in. (32 mm)
LENGTH	31.5 in. (800 mm)
WEIGHT	6.2 lbs.

RATCHETING CABLE CUTTERS

RI-500 & R-750C



RI-500 10" RATCHETING CABLE CUTTER

FEATURES

Ergonomically designed extended handles provide enhanced leverage and power to maximize cutting efficiency

Safety-enhanced thumb lever for easy blade release ensuring a secure and smooth operation

Durable black oxide coated cutting head engineered to resist corrosion, prolongs the tool's lifespan, and maintain optimal performance over time

SPECIFICATIONS	
WEIGHT	1.5 lbs
SIZE	10"L
SIZE	5.5"

CUTTING CAPACITIES	
ALUMINUM	1.25" O.D
COPPER	500 MCM



R-750C 12" RATCHETING CABLE CUTTER

FEATURES

Withstands the stress of 750 MCM copper and aluminum cables with a maximum O.D. of 1-3/4"

Blades have a 100% cutting surface for optimal cutting

Safety-enhanced thumb lever for easy blade release ensuring a secure and smooth operation

SPECIFICATIONS	
WEIGHT	2 lbs.
SIZE	12" L
HANDLE SPAN	6.5"

CUTTING CAPACITIES	
ALUMINUM	1.75" O.D. Al
COPPER	750 MCM Cu

MANUAL HYDRAULIC CUTTING TOOLS

S-16, S-20 & JSHA-20

S-16

MANUAL HYDRAULIC CUTTING TOOL, 16mm JAW OPENING



FEATURES

Cuts wire rope, soft steel bolts, Cu/Al wire, ACSR, and standard guy wire up to 5/8", rebar, ground & anchor rod up to 1/2"

16mm jaw opening with guillotine-style blade for clean cuts and minimal distortion

Flip top latch head rotates 180° degrees for optimum maneuverability in tight workspaces

SPECIFICATIONS

CUTTING FORCE	4.4 Ton
WEIGHT	6 lbs.
SIZE	15" L
JAW OPENING	.6"

CUTTING CAPACITIES

WIRE ROPE	5/8" (16mm)
SOFT STEEL BOLTS	5/8" (16mm)
REBAR, GROUND & ANCHOR ROD	1/2" (13mm)
CU & AL WIRE	5/8" (16mm)
ACSR	5/8" (16mm)
STD GUY WIRE	1/2" (13mm)

S-20

MANUAL HYDRAULIC CUTTING TOOL, 20mm JAW OPENING



FEATURES

Cuts wire rope and Cu/Al wire up to 3/4", soft steel bolts up to 11/16", rebar, ground & anchor rod up to 1/2", ACSR up to 477 MCM, standard guy wire up to 1/2"

20mm jaw opening with guillotine-style blade for clean cuts and minimal distortion

Flip top latch head rotates 180° for optimum maneuverability in tight workspaces

SPECIFICATIONS

CUTTING FORCE	4.4 Ton
WEIGHT	6 lbs.
SIZE	15" L
JAW OPENING	.75"

CUTTING CAPACITIES

WIRE ROPE	3/4" (20mm)
SOFT STEEL BOLTS	11/16" (17mm)
REBAR, GROUND & ANCHOR ROD	1/2" (13mm)
CU & AL WIRE	3/4" (20mm)
ACSR	477 MCM up to 3/4"
STD GUY WIRE	1/2" (13mm)

JSHA-20

2-STAGE MANUAL HYDRAULIC CUTTING TOOL, 20mm JAW OPENING



FEATURES

Cuts wire rope and Cu/Al wire up to 3/4", soft steel bolts up to 11/16", rebar, ground & anchor rod up to 1/2", ACSR up to 477 MCM, standard guy wire up to 1/2"

2-stage hydraulics reduce number of handle strokes required to cut material

Flip top latch head rotates 180°

SPECIFICATIONS

CUTTING FORCE	4.4 Ton
WEIGHT	6 lbs.
SIZE	15" L
JAW OPENING	.75"

CUTTING CAPACITIES

WIRE ROPE	3/4" (20mm)
SOFT STEEL BOLTS	11/16" (17mm)
REBAR, GROUND & ANCHOR ROD	1/2" (13mm)
CU & AL WIRE	3/4" (20mm)
ACSR	477 MCM up to 3/4"
STD GUY WIRE	1/2" (20mm)

MANUAL HYDRAULIC CUTTING TOOLS

S-240A, S-240CC, & S-32

S-240A

MANUAL HYDRAULIC CUTTING TOOL, 24mm JAW OPENING



FEATURES

Cuts wire rope, soft steel bolts, and Cu/Al wire up to 7/8"; rebar, ground and anchor rod, and standard guy wire up to 5/8"; ACSR up to 477 MCM

24mm jaw opening with guillotine-style blade for clean cuts and minimal distortion

Flip top latch head rotates 180° for optimum maneuverability in tight workspaces

SPECIFICATIONS	
CUTTING FORCE	7.8 Ton
WEIGHT	9 lbs.
SIZE	17" L
JAW OPENING	.9"

CUTTING CAPACITIES	
WIRE ROPE	7/8" (22mm)
SOFT STEEL BOLTS	7/8" (22mm)
REBAR, GROUND & ANCHOR ROD	5/8" (16mm)
CU & AL WIRE	7/8" (22mm)
ACSR	477 MCM up to 3/4"
STD GUY WIRE	5/8" (16mm)

S-240CC

2-STAGE MANUAL HYDRAULIC CHAIN CUTTING TOOL, 24mm JAW OPENING



FEATURES

Cuts chain up to 1/4", EHS guy wire 9/16", soft steel bolts, rebar, ground and anchor rod up to 5/8"

2-stage hydraulics reduce number of handle strokes required to cut material

24mm jaw opening with anvil-style blade

Flip top latch head rotates 180°

SPECIFICATIONS	
CUTTING FORCE	7.8 Ton
WEIGHT	11 lbs.
SIZE	18.5" L
JAW OPENING	.9"

CUTTING CAPACITIES	
CHAIN	1/4" (6mm)
EHS GUY WIRE	9/16" (14mm)
SOFT STEEL BOLTS	5/8" (16mm)
REBAR, GROUND & ANCHOR ROD	5/8" (16mm)

S-32

MANUAL HYDRAULIC CUTTING TOOL, 32mm JAW OPENING



FEATURES

Cuts ACSR, Cu/Al wire and wire rope up to 1.25", standard guy wire up to 7/8", rebar, ground and anchor Rod up to 7/8"

32mm jaw opening with guillotine-style blade for clean cuts and minimal distortion

Flip top latch head rotates 180° for optimum maneuverability in tight workspaces

SPECIFICATIONS	
CUTTING FORCE	19.8 Ton
WEIGHT	21 lbs.
SIZE	21" L
JAW OPENING	1.25"

CUTTING CAPACITIES	
WIRE ROPE	1.25" (32mm)
SOFT STEEL BOLTS	1.25" (32mm)
REBAR, GROUND & ANCHOR ROD	7/8" (22mm)
CU & AL WIRE	1.25" (32mm)
ACSR	477 MCM up to 3/4"
STD GUY WIRE	7/8" (22mm)

MANUAL HYDRAULIC CUTTING TOOLS

S-32CC, S-450A, S-550

S-32CC

MANUAL HYDRAULIC CHAIN CUTTING TOOL, 32MM JAW OPENING



FEATURES

Cuts chain up to 1/2", EHS guy wire 7/8", soft steel bolts, rebar, ground and anchor rod up to 1"

Flip top latch head rotates 180 degrees for optimum maneuverability in tight workspaces

SPECIFICATIONS	
CUTTING FORCE	19.8 Ton
WEIGHT	23 lbs.
SIZE	27" L
JAW OPENING	1.25"

CUTTING CAPACITIES	
CHAIN	1/2" (13mm)
EHS GUY WIRE	7/8" (22mm)
SOFT STEEL BOLTS	1" (25mm)
REBAR, GROUND & ANCHOR ROD	1" (25mm)

S-450A

2-STAGE MANUAL HYDRAULIC CUTTING TOOL, 45mm JAW OPENING



FEATURES

Cuts wire rope up to 7/8", Cu/Al wire up to 1.25", ACSR up to 1590 MCM, standard guy wire up to 3/4"

2-stage hydraulics minimize handle strokes needed for cutting

Flip top latch head rotates 180°

SPECIFICATIONS	
CUTTING FORCE	8 Ton
WEIGHT	8 lbs.
SIZE	23" L
JAW OPENING	1.75"

CUTTING CAPACITIES	
WIRE ROPE	7/8" (22mm)
SOFT STEEL BOLTS	3/4" (20mm)
REBAR, GROUND & ANCHOR ROD	5/8" (16mm)
CU & AL WIRE	1.25" (45mm)
ACSR	1590 MCM up to 1.5"
STD GUY WIRE	3/4" (20mm)

S-550

2-STAGE MANUAL HYDRAULIC CUTTING TOOL, 55mm JAW OPENING



FEATURES

Cuts wire rope up to 1", Cu/Al wire up to 2", ACSR up to 2515 MCM, standard guy wire up to 3/4"

2-stage hydraulics minimize handle strokes needed for cutting

Flip top latch head rotates 180°

SPECIFICATIONS	
CUTTING FORCE	13 Ton
WEIGHT	17 lbs.
SIZE	24" L
JAW OPENING	2"

CUTTING CAPACITIES	
WIRE ROPE	1" (25mm)
SOFT STEEL BOLTS	1.25" (32mm)
REBAR, GROUND & ANCHOR ROD	3/4" (22mm)
CU & AL WIRE	2" (50mm)
ACSR	2515 MCM up to 2"
STD GUY WIRE	3/4" (20mm)

MANUAL HYDRAULIC CUTTING TOOLS

S-85



S-85 2-STAGE MANUAL HYDRAULIC CUTTING TOOL, 85mm JAW OPENING

FEATURES

Cuts Telephone & Lead Sheathered Cable 3.35" (85mm); Copper & Aluminum 3" (76mm)

2-stage hydraulics reduce number of handle strokes required to cut material

Flip top latch head rotates 180° for optimum maneuverability in tight workspaces

SPECIFICATIONS

CUTTING FORCE	2.7 Ton
WEIGHT	15 lbs.
SIZE	26" L
JAW OPENING	3.3" (85mm)

CUTTING CAPACITIES

TELEPHONE & LEAD SHEATHED CABLE	3.35" (85mm)
CU & AL WIRE	3" (76mm)

REMOTE HYDRAULIC CUTTING HEADS

SP-20, SP-24 & SP-24CC

SP-20

REMOTE HYDRAULIC CUTTING HEAD 20mm JAW OPENING



FEATURES

Cuts Wire rope up to 5/8" (20mm); Soft steel bolts up to 9/16" (14mm); Rebar, ground, and anchor rods up to 1/2" (13mm); Cu & Al wire and ACSR up to 3/4" (20mm); Standard guy wire up to 1/2" (14mm)

Flip-top latch head rotates 180° for optimal maneuverability in tight spaces and opens easily to securely accept cables and wires

SPECIFICATIONS	
CUTTING FORCE	4.4 Ton
WEIGHT	3 lbs.
SIZE	8" L
JAW OPENING	.75" (20mm)

CUTTING CAPACITIES	
WIRE ROPE	5/8" (20mm)
SOFT STEEL BOLTS	9/16" (14mm)
REBAR, GROUND & ANCHOR ROD	1/2" (13mm)
CU & AL WIRE	3/4" (20mm)
ACSR	3/4" (20mm)
STD GUY WIRE	1/2" (14mm)

SP-24

REMOTE HYDRAULIC CUTTING HEAD, 24mm JAW OPENING



FEATURES

Cuts Wire rope, Cu & Al wire, and ACSR up to 7/8" (22mm); Soft steel bolts up to 3/4" (20mm); Rebar, ground, and anchor rods up to 5/8" (16mm); Standard guy wire up to 5/8" (16mm)

Guillotine style blade for clean cuts with minimal cable distortion

SPECIFICATIONS	
CUTTING FORCE	7.8 Ton
WEIGHT	6 lbs.
SIZE	11" L
JAW OPENING	.9" (24mm)

CUTTING CAPACITIES	
WIRE ROPE	7/8" (22mm)
SOFT STEEL BOLTS	3/4" (20mm)
REBAR, GROUND & ANCHOR ROD	5/8" (16mm)
CU & AL WIRE	7/8" (22mm)
ACSR	7/8" (22mm)
STD GUY WIRE	16mm, 5/8"

SP-24CC

REMOTE HYDRAULIC CHAIN CUTTING HEAD, 24mm JAW



FEATURES

Cuts EHS guy wire up to 9/16" (14mm); Soft steel bolts, rebar, ground, and anchor rods up to 5/8" (16mm); Chain up to 1/4"

2-stage hydraulics reduce number of handle strokes required to cut material

Flip-top latch head rotates 180° for optimal maneuverability in tight spaces and opens easily to securely accept cables and wires.

SPECIFICATIONS	
CUTTING FORCE	7.8 Ton
WEIGHT	6 lbs.
SIZE	11" L
JAW OPENING	.9" (24mm)

CUTTING CAPACITIES	
EHS GUY WIRE	9/16" (14mm)
SOFT STEEL BOLTS	5/8" (16mm)
REBAR, GROUND & ANCHOR ROD	5/8" (16mm)
CHAIN	1/4" (6mm)

REMOTE HYDRAULIC CUTTING HEADS

SP-32, SP-32CC1 & SP-40

SP-32

REMOTE HYDRAULIC CUTTING HEAD, 32mm JAW OPENING



FEATURES

Cuts wire rope, soft steel bolts, Cu & Al wire, and ACSR up to 1.25" (32mm); Rebar, ground, and anchor rods up to 1" (26mm); Standard guy wire up to 7/8" (22mm)

Flip-top latch head rotates 180° for optimal maneuverability in tight spaces and opens easily to securely accept cables and wires.

SPECIFICATIONS	
CUTTING FORCE	20 Ton
WEIGHT	21 lbs.
SIZE	14"L
JAW OPENING	1.25" (32mm)

CUTTING CAPACITIES	
WIRE ROPE	1.25" (32mm)
SOFT STEEL BOLTS	1.25" (32mm)
REBAR, GROUND & ANCHOR ROD	1" (26mm)
CU & AL WIRE	1.25" (32mm)
ACSR	1.25" (32mm)
STD GUY WIRE	7/8" (22mm)

SP-32CC1

REMOTE HYDRAULIC CHAIN CUTTING HEAD, 32mm JAW



FEATURES

Cuts EHS guy wire up to 7/8", (22mm), Soft steel bolts, rebar, ground, and anchor rods up to 1" (26mm), Chain up to 1/2"

Flip-top latch head rotates 180° for optimal maneuverability in tight spaces and opens easily to securely accept cables and wires.

SPECIFICATIONS	
CUTTING FORCE	24 Ton
WEIGHT	26 lbs.
SIZE	13.5"L
JAW OPENING	1.25" (32mm)

CUTTING CAPACITIES	
EHS GUY WIRE	7/8" (22mm)
SOFT STEEL BOLTS	1" (26mm)
REBAR, GROUND & ANCHOR ROD	1" (26mm)
CHAIN	1/2" (13mm)

SP-40

REMOTE HYDRAULIC CUTTING HEAD, 40mm JAW OPENING



FEATURES

Cuts wire rope up to 3/4" (20mm); Soft steel bolts, rebar, ground, and anchor rods up to 5/8" (16mm); Cu & Al wire and ACSR up to 1.25" (40mm); Standard guy wire up to 5/8" (16mm)

Flip-top latch head rotates 180° for optimal maneuverability in tight spaces and opens easily to securely accept cables and wires.

SPECIFICATIONS	
CUTTING FORCE	8 Ton
WEIGHT	8.5 lbs.
SIZE	12"L
JAW OPENING	1.6" 40mm)

CUTTING CAPACITIES	
WIRE ROPE	3/4" (20mm)
SOFT STEEL BOLTS	5/8" (16mm)
REBAR, GROUND & ANCHOR ROD	5/8" (16mm)
CU & AL WIRE	1.25" (40mm)
ACSR	1.25" (40mm)
STD GUY WIRE	5/8" (16mm)

REMOTE HYDRAULIC CUTTING HEADS

SP-55, SP-85 & SP-100

SP-55

REMOTE HYDRAULIC CUTTING HEAD, 55mm JAW OPENING



FEATURES

Cuts ACSR, Copper and Aluminum up to 50mm (2")

Flip top latch head rotates 180° for optimum maneuverability in tight workspaces

SPECIFICATIONS	
CUTTING FORCE	13 Ton
WEIGHT	20 lbs.
SIZE	17"L
JAW OPENING	2" (55mm)

CUTTING CAPACITIES	
WIRE ROPE	1" (25mm)
SOFT STEEL BOLTS	1.25" (32mm)
REBAR, GROUND & ANCHOR ROD	3/4" (20mm)
CU & AL WIRE	2" (50mm)
ACSR	2" (50mm)
STD GUY WIRE	3/4" (20mm)

SP-85

REMOTE HYDRAULIC CUTTING HEAD, 85mm JAW OPENING



FEATURES

Cuts Communication and Lead Sheathed Cables up to 3.35", Copper and Aluminum up to 76mm (3")

Flip top latch head rotates 180° for optimum maneuverability in tight workspaces

Flip top latch head opens to accept cables and wires easily and securely

SPECIFICATIONS	
CUTTING FORCE	2.7 Ton
WEIGHT	16 lbs.
SIZE	19"L
JAW OPENING	3.3" (85mm)

CUTTING CAPACITIES	
COMM. CABLES	3.3" (85mm)
LEAD SHEATH CABLES	3.3" (85mm)
CU & AL WIRE	3" (76mm)

SP-100

REMOTE HYDRAULIC CUTTING HEAD, 100mm JAW OPENING



FEATURES

Cuts Communication and Lead Sheathed Cables up to 4", Copper and Aluminum up to 3.5"

Flip top latch head rotates 180° for optimum maneuverability in tight workspaces

SPECIFICATIONS	
CUTTING FORCE	7.5 Ton
WEIGHT	29 lbs.
SIZE	24"L
JAW OPENING	4" (100mm)

CUTTING CAPACITIES	
COMM. CABLES	4" (100mm)
LEAD SHEATH CABLES	4" (100mm)
CU & AL WIRE	3.5" (89mm)

REMOTE HYDRAULIC CUTTING HEADS

YSP-SERIES SCISSOR CUTTER REMOTE HEADS

YSP-30

REMOTE HYDRAULIC CUTTING HEAD



FEATURES

Cuts ACSR up to 477 MCM, Copper up to 500 MCM and Aluminum up to 1.18"

Ideal for close quarter work and bucket truck applications where the open jaw cutter can easily grab and cut the cables.

Requires an external, high pressure, 10,000 psi pumping source.

SPECIFICATIONS	
CUTTING FORCE	4.4 Ton
WEIGHT	6 lbs.
SIZE	12" L

CUTTING CAPACITIES	
ACSR	477 MCM
COPPER	500 MCM
ALUMINUM	1.18" OD

YSP-34

REMOTE HYDRAULIC CUTTING HEAD



FEATURES

Cuts Copper up to 800 MCM and Aluminum up to 1.24"

Designed to cut 800 MCM hard drawn copper cable.

SPECIFICATIONS	
CUTTING FORCE	4.4 Ton
WEIGHT	6 lbs.
SIZE	12" L

CUTTING CAPACITIES	
ACSR	Do Not Cut
COPPER	800 MCM
ALUMINUM	1.24" OD

YSP-60

REMOTE HYDRAULIC CUTTING HEAD



FEATURES

Cuts Copper up to 750 MCM and Aluminum up to 1.18"

Ideal for use on larger URD cables that require a smooth cut before sleeving and are designed to cut aluminum and copper or lead sheathed cables only.

SPECIFICATIONS	
CUTTING FORCE	4.4 Ton
WEIGHT	6 lbs.
SIZE	13" L

CUTTING CAPACITIES	
ACSR	Do Not Cut
COPPER	750 MCM
ALUMINUM	1.18" OD

HYDRAULIC C-FRAME PUNCH

SH-370M

SH-370M

35 TON HYDRAULIC STEEL PUNCH



The portable SH-370M punch was designed to punch holes through 1/2" mild steel. The punched hole size is 1/16" larger than your bolt size. A stripper guide extends on either side of the ram to strip the material after punching. This hand-held unit will operate from any 10,000 psi hydraulic pumping source. Some uses include the punching of bus bars, tower iron, railing, I-beams and truck frames. Custom size punch and dies are available upon request. Oval and square sizes are also available. Consult factory for order information. The SH-370M comes complete with four sets of punch and die sizes for 3/8", 1/2", 5/8" and 3/4" bolts and carrying case.

FEATURES

Punches up to 1/2" mild steel

13/16" Max hold diameter

Will punch: oval, round, square, and slotted holes

Custom sizes available

Operates from a 10,000 psi pump source

NOTE: USE ONLY 10,000 psi RATED HOSE.

SPECIFICATIONS

OUTPUT	35 Ton
WEIGHT	28 lbs.
CAPACITY	Up to 1/2" Thick Mils Steel
MAX HOLE	13/16" Diameter
DIMENSIONS	14" x 8" x 3.5"
THROAT DEPTH	2.75"

ORDER DATA

SH-370M	Steel Punch w/Male Coupler
SH-370F	Steel Punch w/Female Coupler



Comes complete with four sets of punch and die sizes for 3/8", 1/2", 5/8" and 3/4" bolts and carrying case.

PUNCH & DIES SETS (INCLUDED WITH SH-370M AND SH-370F)

ITEM	DESCRIPTION	BOLT SIZE
SHD-716	7/16" Punch & Die	3/8
SHD-916	9/16" Punch & Die	1/2
SHD-1116	11/16" Punch & Die	5/8
SHD-1316	13/16" Punch & Die	3/4

HYDRAULIC C-FRAME PUNCH

PUNCH & DIE SETS

HEX PUNCH & DIE SETS



HEX PUNCH & DIE SETS	
ITEM	DESCRIPTION
SHD-716HEX	7/16" Hex Punch & Die Set
SHD-916HEX	9/16" Hex Punch & Die Set
SHD-1116HEX	11/16" Hex Punch & Die Set
SHD-1316HEX	13/16" Hex Punch & Die Set

SQUARE PUNCH & DIE SETS



SQUARE PUNCH & DIE SET	
ITEM	DESCRIPTION
SHD-14SQ	1/4" Square Punch & Die Set
SHD-38SQ	3/8" Square Punch & Die Set
SHD-716SQ	7/16" Square Punch & Die Set
SHD-12SQ	1/2" Square Punch & Die Set
SHD-1732SQ	17/32" Square Punch & Die Set
SHD-916SQ	9/16" Square Punch & Die Set

ROUND PUNCH & DIE SETS



ROUND PUNCH & DIE SETS		
ITEM	DESCRIPTION	BOLT SIZE
SHD-18	1/8" Round Punch & Die Set	1/16
SHD-316	3/16" Round Punch & Die Set	1/8
SHD-14	1/4" Round Punch & Die Set	3/16
SHD-932	9/32" Round Punch & Die Set	7/32
SHD-516	5/16" Round Punch & Die Set	1/4
SHD-38	3/8" Round Punch & Die Set	5/16
SHD-716	7/16" Round Punch & Die Set	3/8
SHD-12	1/2" Round Punch & Die Set	7/16
SHD-916	9/16" Round Punch & Die Set	1/2
SHD-58	5/8" Round Punch & Die Set	9/16
SHD-1116	11/16" Round Punch & Die Set	5/8
SHD-34	3/4" Round Punch & Die Set	11/16
SHD-1316	13/16" Round Punch & Die Set	3/4

OBLONG PUNCH & DIE SETS



OBLONG PUNCH & DIE SETS		
ITEM	DESCRIPTION	BOLT SIZE
SHD-516X1316	5/16" x 13/16" Oblong Punch & Die Set	1/4
SHD-38X1316	3/8" x 13/16" Oblong Punch & Die Set	5/16
SHD-716X1316	7/16" x 13/16" Oblong Punch & Die Set	3/8
SHD-12X38	1/2" x 3/8" Oblong Punch & Die Set	5/16
SHD-12X34	1/2" x 3/4" Oblong Punch & Die Set	7/16
SHD-12X1316	1/2" x 13/16" Oblong Punch & Die Set	7/16
SHD-916X34	9/16" x 3/4" Oblong Punch & Die Set	1/2
SHD-916X1316	9/16" x 13/16" Oblong Punch & Die Set	1/2
SHD-58X1316	5/8" x 13/16" Oblong Punch & Die Set	9/16
SHD-1116X1316	11/16" x 13/16" Oblong Punch & Die Set	5/8
SHD-34X1316	3/4" x 13/16" Oblong Punch & Die Set	11/16

CABLE BENDING MADE EASY.



Introducing the patented,
electrician design & developed
Bulldog Bender™ from Huskie Tools.

Built to precisely bend large gauge
electrical cable with ease, especially
in tight places. Bulldog Bender
gives you the power and leverage
to easily install, bend, & terminate
cable switchgear, pad-mounted
transformers, load centers, motor
controls, LB conduit bodies, services,
panels, meter bases, & more.



**Huskie
TOOLS**

LINEMAN PROVEN
UTILITY APPROVED

SINCE 1976

HUSKIETOOLS.COM/BULLDOG-BENDER/

**BUILT FOR EVERYTHING
THAT'S ON THE LINE.™**



A black and white photograph of a person's torso wearing a work shirt. A gloved hand is holding a large, manual crimping tool. The tool has a long handle with a ring at the end and a large, curved head with a circular opening. A black, cylindrical component is attached to the side of the tool's head. The background is a dark, textured surface.

MANUAL AND REMOTE-HYDRAULIC CRIMPING TOOLS

MANUAL AND REMOTE-HYDRAULIC CRIMPING TOOL REFERENCE GUIDE

	6 TON		12 TON	
CONNECTOR RANGE	Lugs and Splices: up to 500 MCM Copper 350 MCM Aluminum H-Taps: 4/0-4/0 Al	Lugs and Splices: up to 500 MCM Cu/Al (for EP-630A) 750 MCM Cu/Al (for EP-750A) H-Taps: N/A	Lugs and Splices: up to 750 MCM Copper 750 MCM Aluminum H-Taps: #8 - 500 MCM Al	Lugs and Splices: up to 1500 MCM Copper 1250 MCM Aluminum H-Taps: 750 MCM Al
DIES	W / X / O Type Dies Huskie Tools HT58-Series and HT-Series	Dieless	U / WH-2 / WH-3 Type Dies Huskie Tools HT41-Series and HTK-Series	
MANUAL CRIMPING TOOLS	MCP-1001 MCP-1002 MCP-2001	N/A	N/A	
MANUAL HYDRAULIC TOOLS	CN-258	EP-630A EP-750A	EP-410 EP-510C EP-510K	
REMOTE HEAD HYDRAULIC CRIMPING TOOLS	CN-58H	EP-630HA EP-750HA	EP-410H/ EP-410HT EP-430H EP-510HC EP-510HK	

MANUAL AND REMOTE-HYDRAULIC CRIMPING TOOL REFERENCE GUIDE

15 TON	60 TON	100 TON	200 TON
Lugs and Splices: up to 2000 MCM Copper 2000 MCM Aluminum H-Taps: up to 750 MCM Al	Lugs and Splices: up to 2000 MCM Copper 2000 MCM Aluminum H-Taps: N/A	Lugs and Splices: Maximum Connector size 2.95" (75mm) H-Taps: N/A	Lugs and Splices: Maximum Connector size 3.94" (100mm) H-Taps: N/A
P Type Dies Huskie Tools HT61-Series	Shell Type Huskie Tools HA60-Series	Shell Type Huskie Tools HA100-Series	Shell Type Huskie Tools HA200-Series (Special Order)
N/A	N/A	N/A	N/A
N/A	N/A	N/A	N/A
EP-610H	EP-60S EP-60SA EP-60WT EP-60D EP-60DT	EP-100WD	EP-200WA

MECHANICAL CRIMPING TOOLS

MCP-1001, MCP-1002 & MCP-2001

- Installs a wide range of full-tension and non-tension utility distribution connectors typically used on overhead lines, poles, and building hook-ups; including service entrance, streetlight, splices, taps, terminals, stacking lugs, stirrups, and repair sleeves.



MCP-1001



MCP-1002



MCP-2001

SPECIFICATIONS	
NOSE DIE	BG (5/8")
SEAT DIE	D3
CRIMP FORCE	9,000 lbs.
RANGE	#14 — #4/0 AWG
WEIGHT	7.0 lbs (3.2 kg)
LENGTH	25.6 in. (650mm)

SPECIFICATIONS	
NOSE DIE	O
SEAT DIE	D3
CRIMP FORCE	9,000 lbs.
RANGE	#14 — #4/0 AWG
WEIGHT	7.0 lbs (3.2 kg)
LENGTH	25.6 in. (650mm)

SPECIFICATIONS	
NOSE DIE	BG (5/8")
SEAT DIE	KEARNEY O-TYPE
CRIMP FORCE	9,000 lbs.
RANGE	#14 — #4/0 AWG
WEIGHT	7.0 lbs (3.2 kg)
LENGTH	25.6 in. (650mm)

FEATURES

Copper taps from #10 solid to #2/0 stranded

Aluminum/ACSR taps from #14 solid to #4/0 ACSR

Stirrups from #6 AWG to #4/0 ACSR

5/8" and .840" service entrance sleeves

Copper and Aluminum code conductor connectors from #6 AWG to #4/0 stranded

Overhead full tension dead-end, full and non-tension splices, and terminals from #10 stranded to #4/0 ACSR

MANUAL HYDRAULIC CRIMPING TOOLS

CN-258, EP-630A, & EP-750A

CN-258

6 TON HYDRAULIC CRIMPING TOOL FOR BURNDY W & KEARNEY O TYPE DIES



FEATURES

Nest dies are D-3, and can be changed with Kearney "O" type dies.

Accepts Burndy "W" type dies using "W" type over the D-3 nest die.

Two-stage rapid advance

External pressure adjustment

SPECIFICATIONS	
CRIMP FORCE	6 Ton
WEIGHT	8.5 lbs
SIZE	21" L
JAW OPENING	.95"

CONNECTOR RANGE	
LUGS & SPLICES	#8-500 MCM Cu #8-350 MCM Al
H-TAP	4/0-4/0

EP-630A

6.2 TON HYDRAULIC OPEN-TOP DIELESS CRIMPING TOOL



FEATURES

Designed to crimp Anderson style connectors, and connectors manufactured to ANSI C119.4

Two-stage rapid advance

External pressure adjustment

SPECIFICATIONS	
CRIMP FORCE	6.2 Ton
WEIGHT	11.5 lbs
SIZE	21" L
JAW OPENING	.9"

CONNECTOR RANGE	
LUGS & SPLICES	#6 AWG-500 MCM Cu/Al

EP-750A

6.2 TON HYDRAULIC FLIP-TOP DIELESS CRIMPING TOOL



FEATURES

Designed to crimp Anderson style connectors, and connectors manufactured to ANSI C119.4

Two-stage rapid advance

External pressure adjustment

SPECIFICATIONS	
CRIMP FORCE	6.2 Ton
WEIGHT	11.5 lbs
SIZE	23" L
JAW OPENING	1.5"

CONNECTOR RANGE	
LUGS & SPLICES	#6 AWG-750 MCM Al/Cu

MANUAL HYDRAULIC CRIMPING TOOLS

EP-410, EP-510C, & EP-510K

EP-410

12 TON HYDRAULIC CRIMPING TOOL FOR U TYPE DIES, 1" JAW OPENING



FEATURES

Accepts all U-type dies currently used in existing 12 ton tools, with jaw opening of 1" and splices up to 400 MCM Cu

Two-stage rapid advance

External pressure adjustment

SPECIFICATIONS	
CRIMP FORCE	12 Ton
WEIGHT	11.5 lbs
SIZE	23" L
JAW OPENING	1"

CONNECTOR RANGE	
LUGS	Up to 750 MCM Cu
SPLICES	Up to 400 MCM Cu

EP-510C

12 TON HYDRAULIC CRIMPING TOOL FOR U TYPE DIES, 1.65" JAW OPENING



FEATURES

Accepts all U-type dies currently used in existing 12 ton tools, with large jaw opening of 1.65" and is able to splices up to 750 MCM Cu

Two-stage rapid advance

External pressure adjustment

SPECIFICATIONS	
CRIMP FORCE	12 Ton
WEIGHT	16.5 lbs
SIZE	25" L
JAW OPENING	1.65"

CONNECTOR RANGE	
LUGS & SPLICES	Up to 750 MCM Cu

EP-510K

12 TON HYDRAULIC CRIMPING TOOL FOR PH-2, WH-2 & WH-3 KEARNEY TYPE DIES



FEATURES

Accepts Kearney dies commonly used in their models WH-2, PH-2, and WH-3 hydraulic tools

External pressure adjustment

SPECIFICATIONS	
CRIMP FORCE	12 Ton
WEIGHT	17 lbs
SIZE	26" L
JAW OPENING	1.5"

CONNECTOR RANGE	
LUGS	Up to 1033 MCM Str
SPLICES	477 ACSR

REMOTE HYDRAULIC CRIMPING HEADS

CN-58H, EP-630HA & EP-750HA

CN-58H

6 TON REMOTE CRIMPING HEAD FOR "O" & "W" TYPE DIES



FEATURES

Accepts Kearney "O" type and Burndy "W" type dies

Lightweight for easy handling in hot stick applications

3/8" Male Screw Type Coupler Provided

SPECIFICATIONS	
CRIMP FORCE	6 Ton
WEIGHT	6 lbs
SIZE	12" L
JAW OPENING	0.95"

CONNECTOR RANGE	
LUGS	#6-500 MCM Cu
SPLICES	#6-4/O Al
H-TAP	4/O-4/O Al

EP-630HA

6.2 TON OPEN TOP DIELESS REMOTE CRIMPING HEAD



FEATURES

Designed to crimp Anderson style connectors and connectors manufactured to ANSI C119.4

Crimps Anderson connectors #10 str - 500 MCM bare Al and #10 sol - 500 MCM bare Cu

3/8" Male Screw Type Coupler Provided

SPECIFICATIONS	
CRIMP FORCE	6.2 Ton
WEIGHT	6.5 lbs
SIZE	9" L
JAW OPENING	0.9"

CONNECTOR RANGE	
LUGS & SPLICES	#10 AWG-500 MCM Cu/Al

EP-750HA

6.2 TON FLIP TOP DIELESS REMOTE CRIMPING HEAD



FEATURES

Designed to crimp Anderson style connectors and connectors manufactured to ANSI C119.4

Flip-top opening and a pull-pin locking mechanism to accept larger connectors up to 750 MCM

3/8" Male Screw Type Coupler Provided

SPECIFICATIONS	
CRIMP FORCE	6.2 Ton
WEIGHT	6.5 lbs
SIZE	10.5" L
JAW OPENING	1.5"

CONNECTOR RANGE	
LUGS & SPLICES	#10 AWG-750 MCM Cu/Al

Note: When using any of these high-pressure tools always use 10,000 psi rated non-conductive hose (NC-16 series).

REMOTE HYDRAULIC CRIMPING HEADS

EP-410H, EP-510HC & EP-510HK

EP-410H

12 TON REMOTE HYDRAULIC CRIMPING HEAD FOR U TYPE DIES, 1" JAW OPENING



FEATURES

Accepts all "U" type industry standard dies

Open "C" head design allows easy placement and removal of connector from tool

3/8" Male Screw Type Coupler Provided

SPECIFICATIONS

CRIMP FORCE	12 Ton
WEIGHT	8.25 lbs
SIZE	10"
JAW OPENING	1"

CONNECTOR RANGE

LUGS	#8-750 MCM Cu
SPLICES	#10-400 MCM Cu

EP-510HC

12 TON REMOTE HYDRAULIC CRIMPING HEAD FOR U TYPE DIES, 1.65" JAW OPENING



FEATURES

Accepts all "U" type industry standard dies

Large 1.65" jaw opening accepts conductors and mid-span sleeve connections up to 750 MCM

3/8" Male Screw Type Coupler Provided

SPECIFICATIONS

CRIMP FORCE	12 Ton
WEIGHT	11 lbs
SIZE	12.25" L
JAW OPENING	1.65"

CONNECTOR RANGE

LUGS & SPLICES	750 MCM Cu
----------------	------------

EP-510HK

12 TON REMOTE HYDRAULIC CRIMPING HEAD FOR PH-2, WH-2 AND WH-3 KEARNEY STYLE DIES



FEATURES

Accepts PH-2, WH-2, and WH-3 Kearney style dies as well as "U" type industry standard dies with use of UDK-1 die adapter (sold separately)

Open "C" head design allows easy placement and removal of connector from tool

3/8" Male Screw Type Coupler Provided

SPECIFICATIONS

CRIMP FORCE	12 Ton
WEIGHT	13.5 lbs
SIZE	14" L
JAW OPENING	1.5"

CONNECTOR RANGE

LUGS	1033 MCM St
SPLICES	477 ACSR

REMOTE HYDRAULIC CRIMPING HEADS

EP-610H, EP-610HTB



EP-610H

15 TON REMOTE HYDRAULIC CRIMPING HEAD FOR P STYLE DIES

FEATURES

Accepts all "P" type industry standard die sets, as well as "U" type industry standard dies with the use of the PU-15 die adapter

Open "C" head design allows easy placement and removal of connector from tool

3/8" Male Screw Type Coupler Provided

SPECIFICATIONS	
CRIMP FORCE	15 Ton
WEIGHT	14.5 lbs
SIZE	14.5" L
JAW OPENING	2"

CONNECTOR RANGE	
LUGS & SPLICES	#8 - 1500 MCM Cu
	#8 - 1250 MCM Al
H-TAP	Up to 750/750 MCM



EP-610HTB

15 TON REMOTE HYDRAULIC CRIMPING HEAD FOR T&B STYLE DIES

FEATURES

Accepts T&B style 15 ton dies and "U" type industry standard dies with use of a T&B die adapter

Open "C" head design allows easy placement and removal of connector from tool

3/8" Male Screw Type Coupler Provided

SPECIFICATIONS	
CRIMP FORCE	15 Ton
WEIGHT	14.5 lbs
SIZE	14.5" L
JAW OPENING	2"

CONNECTOR RANGE	
LUGS & SPLICES	#8 - 1500 MCM Cu
	#8 - 1250 MCM Al
H-TAP	Up to 750/750 MCM

SINGLE ACTING REMOTE HYDRAULIC CRIMPING HEADS

EP-60WT EP-V60SA & EP-60SA

EP-60WT

60 TON TITANIUM SINGLE-ACTING HYDRAULIC CRIMPING HEAD



FEATURES

Effortlessly compresses sleeves and lugs on ACSR and ACAR transmission and distribution cable

Removable base and die cap for easy cable insertion

Oblong lifting ring

SPECIFICATIONS

CRIMP FORCE	60 Ton
WEIGHT	34 lbs.
SIZE	6"W x 17"H
CABLE CAPACITY	2.4" O.D
DIE STYLE	HA60-Series

CONNECTOR RANGE

LUGS	Up to 2000 MCM Cu/Al
SPLICES	Up to 2000 MCM Cu/Al

EP-V60SA

60 TON STEEL SINGLE-ACTING HYDRAULIC CRIMPING HEAD



FEATURES

Effortlessly compresses sleeves and lugs on ACSR and ACAR transmission and distribution cable

Removable base and die cap for easy cable insertion

Oblong lifting ring

SPECIFICATIONS

CRIMP FORCE	60 Ton
WEIGHT	47 lbs.
SIZE	6" W X 17" H
CABLE CAPACITY	2.4" O.D
DIE STYLE	Alcoa or Burndy 'L' Dies

CONNECTOR RANGE

LUGS	Up to 2000 MCM Cu/Al
SPLICES	Up to 2000 MCM Cu/Al

EP-60SA

60 TON STEEL SINGLE-ACTING HYDRAULIC CRIMPING HEAD



FEATURES

Effortlessly compresses sleeves and lugs on ACSR and ACAR transmission and distribution cable

Removable base and die cap for easy cable insertion

Oblong lifting ring

SPECIFICATIONS

CRIMP FORCE	60 Ton
WEIGHT	42 lbs.
SIZE	6"W x 16.2"H
CABLE CAPACITY	2.4" O.D
DIE STYLE	Alcoa or Burndy 'L' Dies

CONNECTOR RANGE

LUGS	Up to 2000 MCM Cu/Al
SPLICES	Up to 2000 MCM Cu/Al

DOUBLE ACTING REMOTE HYDRAULIC CRIMPING HEADS

EP-60D2 & EP-60DT



EP-60D2 60 TON STEEL DOUBLE-ACTING HYDRAULIC CRIMPING HEAD

FEATURES

Designed for full tension transmission and substation connections

Double acting hydraulic cylinder for quicker return times

Light weight weighing less than 50 lbs

SPECIFICATIONS

CRIMP FORCE	60 Ton
WEIGHT	47 lbs
SIZE	6"W x 17"H
CABLE CAPACITY	2.4" O.D.
DIE STYLE	HA60-Series

CONNECTOR RANGE

LUGS	Up to 2000 MCM Cu/Al
SPLICES	Up to 2000 MCM Cu/Al



EP-60DT 60 TON TITANIUM DOUBLE-ACTING HYDRAULIC CRIMPING HEAD

FEATURES

Designed for full tension transmission and substation connections

Double acting hydraulic cylinder for quicker return times

Light weight weighing only 34lbs

SPECIFICATIONS

CRIMP FORCE	60 Ton
WEIGHT	34 lbs
SIZE	6"W x 17"H
CABLE CAPACITY	2.4" O.D.
DIE STYLE	HA60-Series

CONNECTOR RANGE

LUGS	Up to 2000 MCM Cu/Al
SPLICES	Up to 2000 MCM Cu/Al

100 TON SINGLE/DOUBLE-ACTING REMOTE HYDRAULIC CRIMPING HEAD 200 TON DOUBLE-ACTING REMOTE HYDRAULIC CRIMPING HEAD

EP-100SD & EP-200WA



EP-100SD

100 TON SINGLE & DOUBLE-ACTING HYDRAULIC CRIMPING HEAD

FEATURES

Designed for full tension transmission and substation connections

Double acting hydraulic cylinder for quicker return times

Light weight weighing less than 100 lbs

Removable Die Caps for Easy Cable Insertion

SPECIFICATIONS

CRIMP FORCE	100 Ton
WEIGHT	96 lbs.
SIZE	7-1/2"W x 14"H
DIE STYLE	HA100-Series



EP-200WA

200 TON DOUBLE-ACTING HYDRAULIC CRIMPING HEAD

FEATURES

Designed for full tension transmission and substation connections

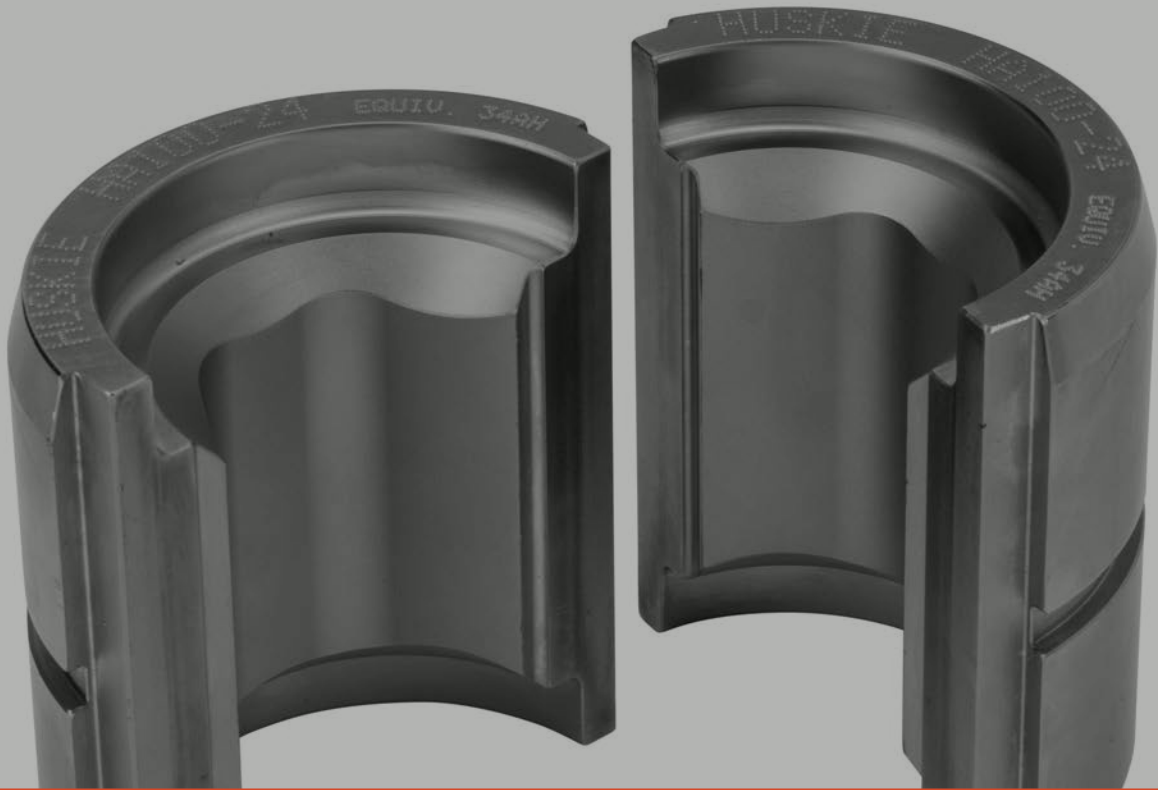
Double acting hydraulic cylinder for quicker return times

Light weight weighing less than 200 lbs

Removable Die Caps for Easy Cable Insertion

SPECIFICATIONS

CRIMP FORCE	200 Ton
WEIGHT	190 lbs.
SIZE	14"W x 17"H
DIE STYLE	HA200-Series



CRIMPING DIES

FIND YOUR DIE INSTANTLY FROM YOUR DESKTOP OR PHONE.

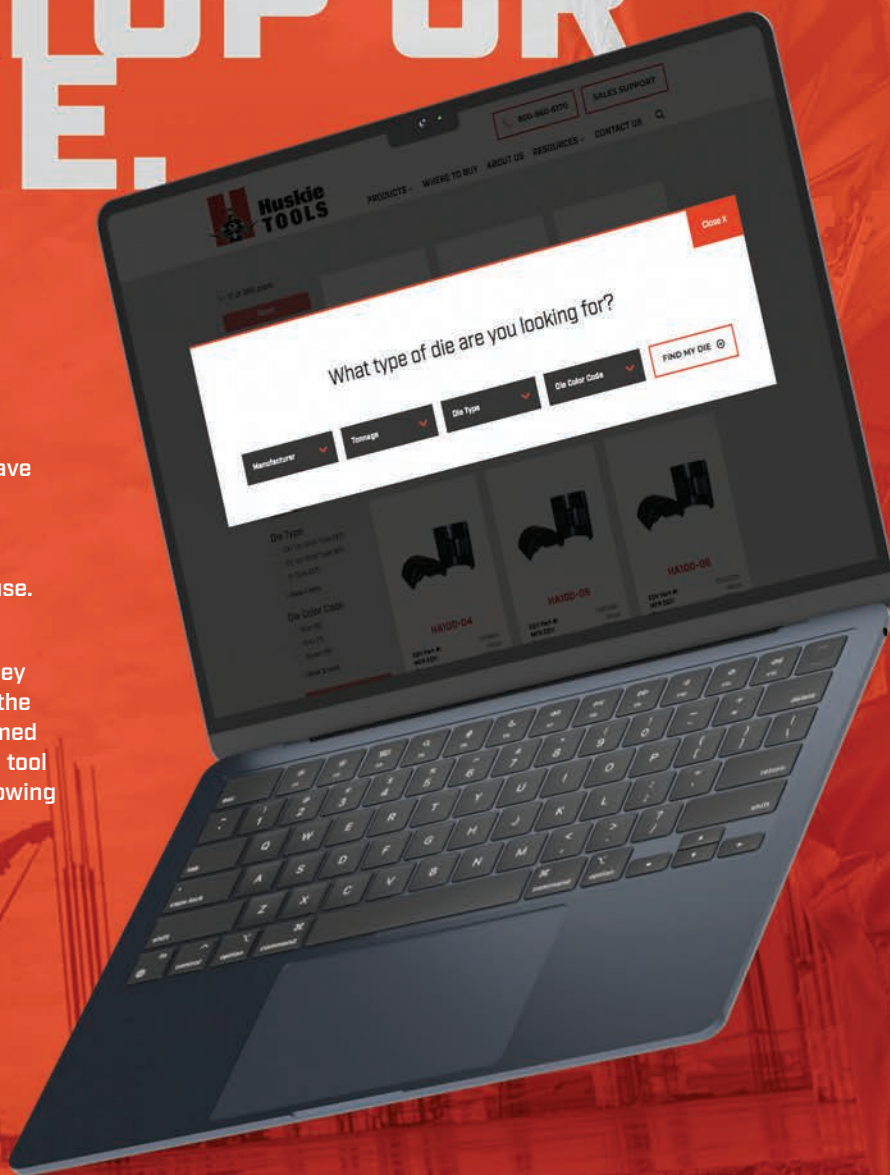
DIEFINDER™
BY HUSKIE TOOLS

New dies? New tools? Whatever the need, they have made it as easy as 1, 2, 3 with an updated easy to navigate website featuring its fast and intuitive Product Finder and a newly engineered and customized Die Finder that couldn't be easier to use.

The **Huskie Tools Die Finder** allows customers to input any information they have on the die that they are looking for, click search, and instantly see all the appropriate available dies that fit their needs. Armed with that information, they can contact their local tool supplier and order up exactly what they need, knowing they have all the necessary info to get the order placed and to get the order right.

So whether you are in search of the latest tool technology or you need to get your hands on specific replacement dies, Huskie Tools has the quick and easy process to get you all the info you need to get what you want.

TRY OUT THE DIE FINDER AT
[HUSKIETOOLS.COM/DIE-FINDER/](https://www.huskietools.com/die-finder/)



CRIMPING DIES

HT58-SERIES & HT-SERIES

HT58-SERIES



► Equivalent to Burndy “W” Type Dies for 4-6 Ton Tools

FEATURES

MFR EQV: Burndy

Die Type: “W”

Tonnage: 4-6 Ton

Compatible with all Huskie Tools that accept “W” type dies

Marked with Huskie and equivalent Burndy “W” die no.

Nickel plated

HUSKIE	BURNDY EQUIV.	HUSKIE	BURNDY EQUIV.	HUSKIE	BURNDY EQUIV.
HT58AE	W-K840	HT58CF	W-166	HT58K	WKK
HT58AF	W-L	HT58CG	W-167	HT58KA	W-687
HT58AK	W-O	HT58CM	W-171	HT58KD	W-K12
HT58AT	W-5CRT	HT58CUT	CUTTER	HT58KH	W-702
HT58AU	W-4CRT	HT58DE	W-236	HT58KS	W-K737
HT58AW	W-2CRT	HT58DG	W-238	HT58KT	W-K747
HT58AY	W-25RT	HT58DH	W-239	HUSKIE	NICOPRESS EQUIV.
HT58AZ	W-26RT	HT58DJ	W-240		
HT58BA	W-27RT	HT58DK	W-241		
HT58BC	W-28RT	HT58DM	W-243		
HT58BE	W-29RT	HT58DP	W-245	HUSKIE	CSA EQUIV.
HT58BF	W-30RT	HT58DT	W-247		
HT58BJ	W-31RT	HT58DV	W-248		
HT58BK	W-32RT	HT58DW	W-249		
HT58BL	W-34RT	HT58DY	W-251	HT58PA	CSA-20
HT58BX	W-161	HT58FA	W-31ART	HT58PB	CSA-22
HT58BZ	W-162	HT58G	W-BG	HT58PC	CSA-24
HT58CB	W-163	HT58J	W-C		
HT58CD	W-164	HT58JS	W-660		
HT58CE	W-165	HT58JT	W-733		

HT-SERIES



► Equivalent to Kearney “O” Type Dies for 4-6 Ton Tools

FEATURES

MFR EQV: Kearney

Die type: “O” Type

Tonnage: 4-6 Ton

Nickel plated

Compatible with all Huskie Tools that accept “O” type dies

Marked with Huskie and equivalent Kearney die number.

HUSKIE	KEARNEY EQUIV.	HUSKIE	KEARNEY EQUIV.	HUSKIE	KEARNEY EQUIV.
HT-1116	11/16	HT-620	620	HT-B	B
HT-11A	11A	HT-635	635 (HEX)	HT-C	C
HT-12	1/2	HT-737	737	HT-D	D
HT-14	1/4	HT-747	747 (HEX)	HT-D3	D3
HT-1932	19/32	HT-781	781	HT-J	J
HT-316	3/16	HT-7A	7A	HT-K	K
HT-38	3/8	HT-840	840	HT-O	O
HT-510	510 (HEX)	HT-845	845	HT-P	P
HT-516	5/16	HT-916	9/16	HT-T	T
HT-58-1	5/8-1	HT-9A	9A		

HUSKIE	CSA EQUIV.
HTCSA-20	CSA-20
HTCSA-22	CSA-22
HTCSA-24	CSA-24

CRIMPING DIES

HT41-SERIES

HT41-SERIES



Equivalent to Burndy and Kearney
“U” Type Dies for 12 Ton Tools

FEATURES

MFR EQV: Varies

Die Type: “U”

Tonnage: 12 Ton

Marked with Huskie
and equivalent
Burndy, Kearney
Alcoa or CSA die
number.

Nickel plated

HUSKIE	CSA EQUIV.
HT41PA	CSA-20
HT41PB	CSA-22
HT41PC	CSA-24
HT41PD	CSA-26
HT41PE	CSA-28
HT41PF	CSA-30W
HT41PG	CSA-22CU
HT41PH	CSA-24CU
HT41PI	CSA-26CU
HT41PJ	CSA-28CU
HT41PK	CSA-30WCU
HT41PL	CSA-20CU
HT41PM	CSA-1
HT41PN	CSA-2
HT41PZ	CSA-3

HUSKIE	KEARNEY EQUIV.
HT41KP	510
HT41KQ	572
HT41KR	635
HT41KX	727
HT41KS	737
HT41KT	747
HT41KU	781
HT41AE	840
HT41BW	1/5/16
HT41KO	1-1/2-2
HT41KN	1-1/8-2
HT41KM	1-2
HT41KD	1/2
HT41KA	1/4

HUSKIE	KEARNEY EQUIV.
HT41KH	11/16
HT41KL	15/16
HT41KF	19/32
HT41KK	29/32
HT41KI	3/4
HT41KB	3/8
HT41KC	5/16
HT41KG	5/8-1
HT41KE	9/16
HT41BKT	BKT
HT41KV	BKT
HT41U	U

HUSKIE	ALCOA EQUIV.
HT4107	74SH-03SH
HT4108	75SH-05SH
HT4109	76SH
HT4111	11AH
HT4120	20AH-14AH
HT4128	74AH-10AH
HT4129	75AH-12AH
HT4130	76AH
HT4131	72AH
HT4132	73AH-08AH
HT4133	78AH
HT4140	07CD
HT4141	08CD
HT4142	09CD
HT4155	72SH-01SH
HT4156	73SH
HT4180	13AH-80EA

HUSKIE	BURNDY EQUIV.
HT41AB	U-H
HT41AE	U-K840
HT41AF	U-L
HT41AG	U-M
HT41AJ	U-N
HT41AK	U-O
HT41AM	U-R
HT41AT	U5CRT
HT41AU	U4CRT
HT41AV	U3CRT
HT41AW	U2CRT
HT41AX	U1CRT
HT41AY	U25RT
HT41AZ	U26RT
HT41BA	U27RT
HT41BC	U28RT
HT41BE	U29RT
HT41BF	U30RT
HT41BJ	U31RT
HT41BK	U32RT
HT41BL	U34RT
HT41BM	U36RT

HUSKIE	BURNDY EQUIV.
HT41BP	U39RT
HT41BX	U-161
HT41BZ	U-162
HT41CB	U-163
HT41CD	U-164
HT41CE	U-165
HT41CF	U-166
HT41CG	U-167
HT41CJ	U-168
HT41CK	U-169
HT41CL	U-170
HT41CT	U-203
HT41CUT	Cutter Dies
HT41DE	U-236
HT41DF	U-237
HT41DG	U-238
HT41DH	U-239
HT41DL	U-242
HT41DM	U-243
HT41DP	U-245
HT41DT	U-247
HT41DV	U-248

HUSKIE	BURNDY EQUIV.
HT41DW	U-249
HT41DY	U-251
HT41DZ	U-252
HT41EK	U-261
HT41EM	U-267
HT41EX	U25ART
HT41EY	U26ART
HT41EZ	U28ART
HT41FA	U31ART
HT41FB	U34ART
HT41FG	U-305
HT41FM	U-316
HT41FN	U-317
HT41FU	U-321
HT41FW	U29ART
HT41FX	U-327
HT41G	U-BG
HT41GE	U6CABT
HT41GF	U2CABT
HT41GK	U-373
HT41GL	U8CABT
HT41GM	U4CABT

HUSKIE	BURNDY EQUIV.
HT41GW	U27ART
HT41GX	U-468
HT41GZ	U30ART
HT41HG	U36ART
HT41HH	U32ART
HT41HM	U-490
HT41J	U-C
HT41JM	U-654
HT41JN	U-655
HT41JP	U-658
HT41JR	U-659
HT41KJ	U-705
HT41LG	U-788
HT41LJ	U39ART2
HT41NC	U-997
HT41ND	U-998
HT41NH	U-1011
HT41TEST	Test Dies
HT41V	U-D
HT41X	U-D3
HT41Y	U-E
HT41Z	U-F

CRIMPING DIES

HTK-SERIES & WIRE ROPES

HTK-SERIES



► Equivalent to Kearney “WH-2” (10.7 Ton) & “WH-3” (12 Ton) Type Dies

FEATURES

MFR EQV: Kearney

Die type: WH-2/WH-3

Tonnage: 12 Ton

Marked with Kearney die size

Nickel plated

HUSKIE	KEARNEY EQUIV.	HUSKIE	KEARNEY EQUIV.
HTK	BKT	HTK-58-1	5/8-1
HTK-1-12H	1-1/2 (HEX)	HTK-635	635
HTK-1-12H-3	1-1/2 (WH-Only)	HTK-727	727
HTK-1-18-2H	1-1/8	HTK-737	737
HTK-1-2H	1-2 (HEX)	HTK-747	747
HTK-1-516H	1 5/16 (HEX)	HTK-781	781
HTK-1116	11/16	HTK-840	840
HTK-1145	1145	HTK-916	9/16
HTK-12	1/2	HTK-BKT	BKT
HTK-14	1/4	HTK-C	C
HTK-1516	15/16	HTK-D	D
HTK-1932	1932	HTK-N	N
HTK-2932H	29/32 (HEX)	HTK-N-2	N (WH-Only)
HTK-34H	3/4 (HEX)	HTK-N-3	N (WH-3 Only)
HTK-38	3/8	HTK-O	O
HTK-510	510	HTK-P	P
HTK-516	5/16	HTK-U	U
HTK-572	572	UDK-1	U Die Adapter

*UDK-1 is a “U” die adapter for Huskie Tools 12 Ton Kearney-Style Crimping Tools

WIRE ROPES



► 12 Ton “U” Type Compression Dies

FEATURES

Designed for duplex oval sleeves and button stops

For use on copper & aluminum connectors only

Fits in any 12 Ton tool that uses standard “U” dies

Nickle Plated

ITEM#	DESCRIPTION	ALUMINUM	COPPER
18AC	WIRE ROPE Die 1/8" AC	1/8"	1/8"
316AC	WIRE ROPE DIE 3/16" AC	3/16"	3/16"
14AC	WIRE ROPE DIE 1/4" AC	1/4"	1/4"
516AC	WIRE ROPE DIE 5/16" AC	5/16"	5/16"
38AC	WIRE ROPE DIE 3/8" AC	3/8"	3/8"
716A12C	WIRE ROPE DIE 7/16" A, 1/2" C	7/16"	1/2"
716C	WIRE ROPE DIE 7/16" C	-	7/16"
12A	WIRE ROPE DIE 1/2" A	1/2"	-

CRIMPING DIES

DIE CHART FOR COLOR CODE CONNECTORS

Huskie Dies are configured to be equivalent to Burndy dies of respective size. When using Huskie HT series dies consult the connector manufacturer for their recommended die cross referencing and application instructions. All Huskie dies are machined or cast from solid steel stock and case hardened to 45-50 HRC and are guaranteed for 10,000 operations. These dies are also marked with HT numbers and Burndy cross reference numbers to make cross referencing easy and less confusing. The following chart lists Huskie and equivalent Burndy numbers for reference only. Other manufacturer die numbers are also listed to aid the user in selecting the proper die cross reference numbers when using a particular connector. All connectors are different and the connector manufacturer should be consulted in each case. Many manufacturers offer different size connectors for the same wire size. Huskie Tools, Inc. is not responsible in the event of misuse or misapplication of die sets. Huskie Tools is not a connector manufacturer, but a tool and die supplier.

"APPROXIMATE CU"	"CONDUCTOR RANGE AL"	"DIE COLOR RANGE"	"HUSKIE DIE SET CATALOG #"	"BURNDY INDEX"	BURNDY DIE SET	"T68 INDEX"
6 AWG	8 AWG	BLUE	H4AT/HT41GL	7/374	U5CRT/U8CABT	24
4 AWG	6 AWG	GREY	HT41AU/HT41GE	8/346	U4CRT/U6CABT	29
2 AWG		BROWN	HT41AW	10	U2CRT	33
1 AWG		GREEN	HT41AX	11	U1CRT	37
	4 AWG	GREEN	HT41GM	375	U4CABT	37
1/0 AWG		PINK	HT41AY	12	U25RT	42H
	2 AWG	PINK	HT41GF	348	U2CABT	42H
2/0 AWG		BLACK	HT41AZ	13	U26RT	45
3/0 AWG		ORANGE	HT41BA	14	U27RT	50
	1/0 AWG	TAN	HT41EX	296	U25ART	50
4/0 AWG		PURPLE	HT41BC	15	U28RT	54H
	2/0 MCM	OLIVE	HT41EY	297	U26ART	54H
250 MCM		YELLOW	HT41BE	16	U29RT	62
	3/0 MCM	RUBY	HT41GW	467	U27ART	60
300 MCM		WHITE	HT41BF	17	U30RT	66
	4/0 MCM	WHITE	HT41EZ	298	U28ART	66
350 MCM		RED	HT41BJ	18	U31RT	71H
	250 MCM	RED	HT41FW	324	U29ART	71H
400 MCM		BLUE	HT41BK	19	U32RT	76
	300 MCM	BLUE	HT41GZ	470	U30ART	76
500 MCM		BROWN	HT41BL	20	U34RT	87H
	350 MCM	BROWN	HT41FA	299	U31ART	87H
600 MCM	400 MCM	GREEN	HT41HH/HT41BM	472/22	U32ART/U36RT	94H
	500 MCM	PINK	HT41FB	300	U34ART	99H
750 MCM		BLACK	HT41BP	24	U39RT	106H
	600 MCM	BLACK	HT41HG	473	U36ART	106H
	700/750 MCM	YELLOW	HT41LJ	936	U39ART-2	115H

FOR REFERENCE ONLY! CONSULT YOUR CONNECTOR MANUFACTURER FOR EXACT CABLE, CONNECTOR AND DIE SELECTION.

CRIMPING DIES

HT61-SERIES & HA60-SERIES

HT61-SERIES



► Equivalent to Burndy "P" Type Dies for 15 Ton Tools

FEATURES

MFR EQV: Burndy

Die type: "P"

Tonnage: 15 Ton

Fits all existing Y46 heads accepting "P" type dies

Marked with Huskie and equivalent Burndy "P" type dies

HUSKIE	BURNDY EQUIV.
HT61AC	PKR
HT61AJ	PN
HT61BP	P39RT
HT61BR	P40RT
HT61BU	P44RT
HT61BV	P46RT
HT61BW	P342
HT61FC	P39ART
HT61FD	P44ART
HT61HJ	P40ART
HT61KX	P724
PU-15	DIE ADAPTER

HUSKIE	CSA EQUIV.
HT61PF	CSA-30
HT61PK	CSA-30CU
HT61PO	CSA-32
HT61PP	CSA-32CU
HT61PQ	CSA-34

HA60-SERIES



► Equivalent to Alcoa 60 Ton Dies

FEATURES

MFR EQV: Alcoa, Burndy and CSA

Fits all existing 60 ton presses accepting 60 ton shell type dies

Marked with Huskie and equivalent Alcoa manufacturers die number

HUSKIE	ALCOA EQUIV.	HUSKIE	ALCOA EQUIV.	HUSKIE	CSA EQUIV.
HA60-01	6010SH	HA60-42	6009CD	HA60-PA	CSA-20
HA60-02	6012SH	HA60-43	6010CD	HA60-PB	CSA-22
HA60-03	6014SH	HA60-44	6011CD	HA60-PC	CSA-24
HA60-04	6016SH	HA60-45	6012CD	HA60-PD	CSA-26
HA60-05	6018SH	HA60-46	6013CD	HA60-PE	CSA-28
HA60-06	6020SH	HA60-47	6014CD	HA60-PF	CSA-30
HA60-07	6074SH	HA60-48	6015CD	HA60-PI	CSA-26CU
HA60-08	6075SH	HA60-49	6016CD	HA60-PJ	CSA-28CU
HA60-09	6076SH	HA60-50	6017CD	HA60-PK	CSA-30CU
HA60-20	6020AH			HA60-PM	CSA-1
HA60-21	6024AH			HA60-PN	CSA-2
HA60-22	6027AH			HA60-PO	CSA-32
HA60-23	6030AH			HA60-PP	CSA-32CU
HA60-24	6034AH			HA60-PQ	CSA-34
HA60-25	6036AH			HA60-PR	CSA-34CU
HA60-26	6038AH			HA60-PS	CSA-36
HA60-27	6040AH			HA60-PT	CSA-36CU
HA60-28	6074AH			HA60-PU	CSA-38
HA60-29	6075AH			HA60-PV	CSA-38CU
HA60-30	6076AH			HA60-PZ	CSA-3
HA60-40	6007CD				
HA60-41	6008CD				

HUSKIE	BURNDY EQUIV.
HA60-717	L717
HA60-719	L719
HA60-720	L720
HA60-722	L722
HA60-724	L724
HA60-725	L725
HA60-727	L727
HA60-728	L728
HA60-729	L729
HA60-735	L735

CRIMPING DIES

HA100-SERIES & DIE CASES

HA100-SERIES



▶ Equivalent to Alcoa and CSA 100 Ton Dies

FEATURES

Fits all existing 100 ton presses accepting 100 ton shell type dies

Marked with Huskie and equivalent Alcoa or CSA die number

HUSKIE	ALCOA EQUIV.	HUSKIE	ALCOA EQUIV.	HUSKIE	ALCOA EQUIV.
HA100-01	10010SH	HA100-28	10074AH	HA100-49	10016CD
HA100-02	10012SH	HA100-29	10075AH	HA100-50	10017CD
HA100-03	10014SH	HA100-30	10076AH	HA100-51	10018CD
HA100-04	10016SH	HA100-34	10042AH	HA100-52	10019CD
HA100-05	10018SH	HA100-36	10044AH	HA100-53	10020CD
HA100-06	10020SH	HA100-37	10046AH		
HA100-07	10074SH	HA100-38	10048AH	HUSKIE	CSA EQUIV.
HA100-08	10075SH	HA100-40	10007CD	HA100-PF	CSA-30
HA100-20	10020AH	HA100-41	10008CD	HA100-PN	CSA-2
HA100-21	10024AH	HA100-42	10009CD	HA100-PO	CSA-32
HA100-22	10027AH	HA100-43	10010CD	HA100-PQ	CSA-34
HA100-23	10030AH	HA100-44	10011CD	HA100-PS	CSA-36
HA100-24	10034AH	HA100-45	10012CD	HA100-PU	CSA-38
HA100-25	10036AH	HA100-46	10013CD	HA100-PZ	CSA-3
HA100-26	10038AH	HA100-47	10014CD		
HA100-27	10040AH	HA100-48	10015CD		

HTK-CASE, DIE-CASE & W-CASE

▶ The **HTK-CASE** is a custom molded case made with a shock absorbing cushion of air between sturdy double walls. It has ten individual compartments that will hold up to ten die sets

The Huskie model **DIE-CASE** will hold either 18 “U” type die sets or 8 “P” type die sets

The **W-CASE** will hold 12 “W” dies from our HT58-Series



HTK-CASE FEATURES

Shock absorbing cushion of air between double walls

Holds up to 10 die sets



DIE-CASE FEATURES

Holds 18 “U” type die sets or 8 “P” type die sets

Constructed of heavyweight plastic



W-CASE FEATURES

Holds 12 “W” type die sets

Constructed of heavyweight plastic

CRIMPING DIES

6 & 12 TON DIE KITS



▶ Al & Cu Kits for W-Type and U-Type Dies

Convenient case includes assortment of most common dies

Each die set comes in an individual plastic case for safe keeping

Die kits have room for extra die sets or die adapters

PLEASE CONTACT US FOR CUSTOM KIT REQUIREMENTS.

DIEKIT6TAL 6 TON "W" TYPE DIE KIT AND CASE FOR Al CONNECTORS

HUSKIE	BURNDY EQUIV.	HUSKIE	BURNDY EQUIV.
HT58BX	W-161	HT58CF	W-166
HT58BZ	W-162	HT58JS	W-660
HT58DH	W-239	HT58DW	W-249
HT58CB	W-163	HT58AE	W-K840
HT58DK	W-241	HT58CUT	W-28K
HT58DP	W-245	HT58G	W-BG

DIEKIT6TCU 6 TON "W" TYPE DIE KIT AND CASE FOR Cu CONNECTORS

HUSKIE	BURNDY EQUIV.	HUSKIE	BURNDY EQUIV.
HT58AT	W-5CRT	HT58BC	W-28RT
HT58AU	W-4CRT	HT58BE	W-29RT
HT58AW	W-2CRT	HT58BF	W-30RT
HT58AY	W-25RT	HT58BJ	W-31RT
HT58AZ	W-26RT	HT58BK	W-32RT
HT58BA	W-27RT	HT58BL	W-34RT

DIEKIT12TAL 12 TON "U" TYPE DIE KIT AND CASE FOR Al CONNECTORS

HUSKIE	BURNDY EQUIV.	HUSKIE	BURNDY EQUIV.
HT41GL	U8CABT	HT41FW	U29ART
HT41GE	U6CABT	HT41GZ	U30ART
HT41GM	U4CABT	HT41FA	U31ART
HT41GF	U2CABT	HT41HH	U32ART
HT41EX	U25ART	HT41FB	U34ART
HT41EY	U26ART	HT41HG	U36ART
HT41GW	U27ART	HT41LJ	U39ART2
HT41EZ	U28ART		

DIEKIT12TCU 12 TON "U" TYPE DIE KIT AND CASE FOR Cu CONNECTORS

HUSKIE	BURNDY EQUIV.	HUSKIE	BURNDY EQUIV.
HT41AT	U5CRT	HT41BE	U29RT
HT41AU	U4CRT	HT41BF	U30RT
HT41AW	U2CRT	HT41BJ	U31RT
HT41AX	U1CRT	HT41BK	U32RT
HT41AY	U25RT	HT41BL	U34RT
HT41AZ	U26RT	HT41BM	U36RT
HT41BA	U27RT	HT41BP	U39RT
HT41BC	U28RT		

A black and white photograph showing a close-up of a person's hand wearing a light-colored, textured work glove. The hand is holding a metal hydraulic fitting, which is a hexagonal nut with a threaded end. A thick, dark hydraulic hose is attached to the other end of the fitting. The background is blurred, showing industrial equipment. An orange banner with white text is overlaid on the bottom right of the image.

HYDRAULIC PUMPS, CABLE GRIPS & ACCESSORIES

HYDRAULIC PUMPS

R-14EA & R-14EAD
R-14EA
3/4 HP 120VAC SINGLE-ACTING HYDRAULIC PUMP (10,000 PSI)

FEATURES

Remote operation allows full operator control

Advance and hold feature standard

Manual control directly on pump motor

Pressure adjustment from 4,000-10,000 psi

SPECIFICATIONS

WEIGHT	75 lbs. w/Oil
SIZE	14" x 13.25" x 16"
POWER OUTPUT	3/4 HP - 8.2 Amp
DELIVERY @ 300 PSI	157 in ³ /min
DELIVERY @ 10,000 PSI	36 ³ /min
OIL CAPACITY	182 cu/in (3 qt)

OPTIONAL ACCESSORIES

FS-14	Foot Switch
URH-14	Remote Control Handle

NOTE: When using any of these high pressure tools, always use 10,000 psi rated non-conductive hose (NC-16 series).

R-14EAD
3/4 HP 120VAC DOUBLE-ACTING HYDRAULIC PUMP (10,000 PSI)

FEATURES

Remote operation allows full operator control

Manual and automatic mode for additional versatility

Low amperage requirement

SPECIFICATIONS

WEIGHT	75 lbs. w/Oil
SIZE	14" x 13.25" x 16"
POWER OUTPUT	3/4 HP - 8.2 Amp
DELIVERY @ 300 PSI	157 in ³ /min
DELIVERY @ 10,000 PSI	36 ³ /min
OIL CAPACITY	182 cu/in (3 qt)

OPTIONAL ACCESSORIES

FS-14	Foot Switch
URH-14	Remote Control Handle

NOTE: When using any of these high pressure tools, always use 10,000 psi rated non-conductive hose (NC-16 series).

HYDRAULIC PUMPS

R-14EH & REPLACEMENT HYDRAULIC OIL

R-14EH 1/2 HP 120VAC HYDRAULIC PUMP (10,000 PSI)



FEATURES

Remote operation allows full operator control

Advance and hold feature standard

Manual control directly on pump motor

Pressure adjustment from 4,000-10,000 psi

SPECIFICATIONS

WEIGHT	33.2 lbs. w/Oil
SIZE	9.5"L x 15.5"H x 10.5"W
POWER OUTPUT	1/2 HP - 6.5 Amp
DELIVERY @ 200 PSI	157 in ³ /min
DELIVERY @ 10,000 PSI	19 in ³ /min
OIL CAPACITY	120 cu/in (2 quarts)

NOTE: When using any of these high pressure tools, always use 10,000 psi rated non-conductive hose (NC-16 series).

REPLACEMENT HYDRAULIC OIL



▶ Shell Tellus T-15 and Shell Tellus S2V15 clear hydraulic fluid. This Shell product can be used in all of our hydraulic products. This fluid can also be added to other clear hydraulic fluids for filling or topping off a hydraulic

PRODUCT INFO

HF-5G	5 Gallon Container
HF-1G	1 Gallon Container
HF-1Q	1 Quart Container
HF-5GRED	Red Hydraulic Fluid for Low Temperature
HF-1GED	Red Hydraulic Fluid 1 Gallon
HF-1QRED	Red Hydraulic Fluid 1 Quart

HYDRAULIC PUMPS

HPG-4 & HPM-P3

HPG-4

**4 HP, GAS ENGINE 10,000 PSI
HYDRAULIC PUMP**



- ▶ Self-contained high pressure pump, with manual operation. Equipped with a 4 HP Briggs & Stratton engine. A four-way valve controls the hydraulic fluid direction for the advance and retract modes.

FEATURES

Four way valve allows for single or double acting capacity

Standard screw type male and female couplers

Optional RC-5 Carrying available for easy moving

SPECIFICATIONS

WEIGHT	74 lbs. w/Oil
OIL CAPACITY	5 Gallons
FUEL TANK CAPACITY	3 Pints
MAX PRESSURE	10,000 psi
POWER OUTPUT	4 HP
DELIVERY @ 100 PSI	480 in3/min
DELIVERY @ 10,000 PSI	55 in3/min
FUEL	Unleaded Gas Only

NOTE: When using any of these high pressure tools, always use 10,000 psi rated non-conductive hose (NC-16 series).

HPM-P3

**5.5 HP, GAS ENGINE 10,000
PSI HYDRAULIC PUMP**



- ▶ Self-contained high pressure pump, with manual operation. It is equipped with a 5.5 HP Honda engine. A four-way valve controls the hydraulic fluid direction for the advance and retract modes.

FEATURES

Inline pressure gauge located on valve for easy reading

Supplied with carrying cage and castors for easy maneuvering

High efficiency and fast working gasoline pump

Better fuel consumption and engine performance

Oil sight gauge

Easy pressure valve adjustments

SPECIFICATIONS

ENGINE TYPE	Honda Air-cooled 4-stroke OHV
OIL CAPACITY	2.5 Gallons
POWER OUTPUT	5.5 HP @3600 RPM
MAX PRESSURE	10,000 psi
OIL DELIVERY AT LOW PRESSURE	2.6 Gallons/min
OIL DELIVERY AT HIGH PRESSURE	.63 Gallons/min
FUEL	Unleaded Gas Only
WEIGHT	105 lbs.

NOTE: When using any of these high pressure tools, always use 10,000 psi rated non-conductive hose (NC-16 series).

HYDRAULIC PUMP CONTROLS

URH-14 & FS-14

URH-14 REMOTE CONTROL HANDLE



- ▶ Use with the R-14EH and R-14EA pumps and equipped with a standard 3/8" high pressure coupler that can be easily matched to your existing tool head.

FEATURES

For use with all electrical and battery operated single acting pumps

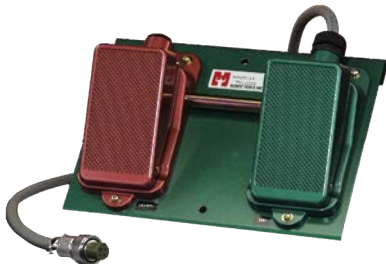
Allows operator one hand control at the tool head

10' cord

SPECIFICATIONS

WEIGHT	3 lbs.
SIZE	8" x 1.5" x 6.5"

FS-14 FOOT SWITCH



- ▶ Designed to replace our pendant hand control on pump models R-14EH, R-14EA, and R-14EAD. This foot control allows the operator to free his hands for better control of his work load. It has a green pedal for the advance mode and a red pedal for the retract mode.

FEATURES

For use with all electrical and battery

operated pumps

Allows operator "hands free" control of advance and retract pump mode

10' cord

SPECIFICATIONS

WEIGHT	4.2 lbs.
SIZE	8" x 1.5" x 6.5"

COUPLERS & HOSES

SC-SERIES & NC-SERIES

10,000 PSI HIGH PRESSURE FLUSH FACE COUPLERS



SCF-8



SCF-8F



SCM-8



FC-8F



MC-8

- ▶ Flush face, snap-type couplers for use in high pressure applications. They are not interchangeable with low pressure flush face couplers. Positive connect or disconnect prevents tool failure due to partial coupled halves of conventional screw-type couplers.

FEATURES

10,000 psi operating pressure marked on both halves

Simple quick connect and disconnect

Twist sleeve lock to prevent accidental disconnect

Flush face, non-drip valving, both halves

SPECIFICATIONS

HOSE END	3/8" NPT
THREADED END	3/8" NPT
WORKING PRESSURE	10,000 psi

MINIMUM BURST PRESSURE

COUPLED	34,800 psi
UNCOUPLED	29,000 psi
HAND CONNECTION	250 psi @150 lbs.
FLUID LOSS PER DISCONNECTION	.035 ml

ORDER DATA

SCF-8F	Female Half w/Female Port
SCF-8	Female Half w/Male End
SCM-8	Male Half w/Female Port
FC-8F	Female Half w/Female Port
FC-8	Female Half w/Male Port
DC-SCF	Female Cap

10,000 PSI HIGH PRESSURE HYDRAULIC HOSE



- ▶ Rated at 10,000 psi working pressure. The hose ends are covered with a thick clear jacket of heavy duty shrink wrap to reduce the risk of hose bursts at these points.

FEATURES

Highly visible safety orange

Heavy duty shrink wrap at hose ends for reduced risk of leaking

Date coded at point of assembly

SPECIFICATIONS

NC-1606	3/16" x 6'
NC-1610	3/16" x 10'
NC-1615	3/16" x 15'
NC-1620	3/16" x 20'
NC-1625	3/16" x 25'
NC-450	1/4" x 50' (1/4" NPT Standard Ends)

GAUGES

PRESSURE TEST GAUGES



PG-1

IN-LINE PRESSURE GAUGE

The PG-1, in line pressure gauge has standard 3/8" couplers and a 10,000 psi indicator. It is used to test pump output pressure. Male and female couplers allow you to install it between the tool head and the pump.

SPECIFICATIONS	
DESCRIPTION	Inline Pressure Gauge Kit
WEIGHT	3 lbs.
DIAL FACE	2.5"
SIZE	9" x 4.5" x 1.5"



PG-15

PRESSURE TEST GAUGE FOR 6 TON TOOLS

The PG-15 is designed to check pressure on Huskie 6 ton hydraulic tools (except the ECO-EZ and SL-Series tools. It is supplied with necessary adapter.

SPECIFICATIONS	
DESCRIPTION	6 Ton Test Gauge Kit
WEIGHT	5 lbs.
DIAL FACE	4"
SIZE	10.5" x 4" x 2"



PG-4/PG4K

PRESSURE TEST GAUGE FOR 12 TON TOOLS

The PG-4 gauge is used to calibrate 12 ton output tools. It was designed to fit in all brands of 12 ton tools, and is supplied with U-type test dies. If you are using Kearney tools, specify PG-4K which comes with TDK-1 test dies.

SPECIFICATIONS	
DESCRIPTION	12 Ton Test Gauge Kit (PG-4) 12 Ton Test Gauge Kit for Kearney (PG-4K)
WEIGHT	3.5 lbs.
DIAL FACE	4"
SIZE	9" x 4" x 1.5"



PG-510

PRESSURE TEST GAUGE FOR 12 TON & 14 TON TOOLS

The PG-510 is designed to check internal pressure on all pistol grip style battery operated tools. It is necessary to check pressure on our dieless tools.

SPECIFICATIONS	
DESCRIPTION	12 & 14 Ton Test Gauge Kit
WEIGHT	5 lbs.
DIAL FACE	4"
SIZE	10.5" x 5" x 2"

NOTE: Our **PG-4, PG-15, PG-630, & PG-610A** gauges come complete with necessary dies, carrying case, and certification.

GAUGES

PRESSURE TEST GAUGES



PG-630 PRESSURE TEST GAUGE FOR 6 TON DIELESS TOOLS

The PG-630 is designed to check output on 6 ton dieless tools, 630 and 750 in both pistol grip and inline models.

SPECIFICATIONS	
DESCRIPTION	Test Gauge Kit
WEIGHT	3 lbs.
DIAL FACE	2.5"
SIZE	9" x 4.5" x 1.5"



PG-610A PRESSURE TEST GAUGE FOR 12 & 15 TON TOOLS

The PG-610A gauge is used to calibrate 12 & 15 ton output tools. The gauge is supplied with HT41 test die. A "U" die adapter, the PU-15, (not supplied) is necessary to test a 15 ton tool.

SPECIFICATIONS	
DESCRIPTION	15 Ton Test Gauge Kit
WEIGHT	3.3 lbs.
DIAL FACE	4"
SIZE	10" x 4" x 1.75"



PG-ND PRESSURE TEST GAUGE FOR 6 TON ECO-EZ & IL-ND STYLE TOOLS

The PG-ND gauge is used to calibrate the ECO-EZ Series tools, as well as the REC-ND tools

SPECIFICATIONS	
DESCRIPTION	Test Gauge Kit
WEIGHT	3.4 lbs.
DIAL FACE	4"
SIZE	9" x 4.5" x 1.5"



PG-SL PRESSURE TEST GAUGE FOR 6 TON SL-ND & REC-ND STYLE TOOLS

The PG-SL is for SL-ND tools with pull-pin. Along with the REC-6NDSL.

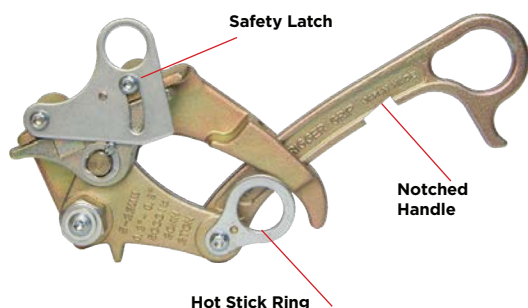
SPECIFICATIONS	
DESCRIPTION	Test Gauge Kit
WEIGHT	3.4 lbs.
DIAL FACE	4"
SIZE	9" x 4.5" x 1.5"

NOTE: Our **PG-4, PG-15, PG-630, & PG-610A** gauges come complete with necessary dies, carrying case, and certification.

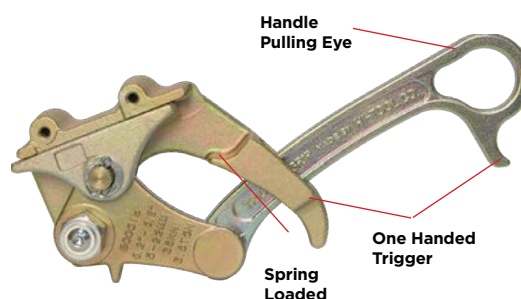
CABLE GRIPS

HOT LINE & STANDARD MODEL

HOT LINE MODEL



STANDARD MODEL



HOT LINE POWER GRIPS™ - with SPRING-LOADED SAFETY LATCH, HOT STICK RING, & NOTCHED HANDLE

ITEM	CABLE DIAMETER	CAPACITY	SPRING LOADED	TRIGGER GRIP	SAFETY LATCH	HOT-STICK RING	NOTCHED HANDLE	GRIP/STYLE	JAW PROFILE/TEETH	JAW LENGTH	WEIGHT
FOR BARE ALUMINUM, ACSR, ACSS, AAC, & COPPER											
TG-451R	0.2" - 0.87" (5 - 22mm)	5000 lbs	✓	✓	✓	✓	✓	Parallel Jaw	Rounded/Standard	3.5" (90 mm)	3.3 lb (1,5 kg)
TG-461R	0.2" - 0.87" (5 - 22 mm)	8000 lbs	✓	✓	✓	✓	✓	Parallel Jaw	Rounded/Standard	3.5" (90 mm)	3.8 lb (1,7 kg)
TG-481R	0.7" - o 1.38" (18 - 35 mm)	9000 lbs	✓	✓	✓	✓	✓	Parallel Jaw	Rounded/Standard	4.75" (120 mm)	5.2 lb (2,4 kg)

STANDARD POWER GRIPS™

ITEM	CABLE DIAMETER	CAPACITY	SPRING LOADED	TRIGGER GRIP	SAFETY LATCH	HOT-STICK RING	NOTCHED HANDLE	GRIP/STYLE	JAW PROFILE/TEETH	JAW LENGTH	WEIGHT
FOR BARE ALUMINUM, ACSR, ACSS, AAC, & COPPER											
TG-45M	0.2" - 0.87" (5 - 22mm)	5000 lbs	✓	✓	-	-	-	Parallel Jaw	Rounded/Standard	4.75" (120 mm)	4.2 lb (1,9 kg)
TG-45MSL	0.2" - 0.87" (5 - 22 mm)	8000 lbs	✓	✓	✓	-	-	Parallel Jaw	Rounded/Standard	4.75" (120 mm)	4.4 lb (2,0 kg)
TG-48	0.7" - 1.38" (18 - 35 mm)	9000 lbs	✓	✓	-	-	-	Parallel Jaw	Rounded/Standard	4.75" (120 mm)	5.2 lb (2,4 kg)
TG-47*	0.7" to 1.4" (18 - 36 mm)	13000 lbs	✓	-	-	-	-	Parallel Jaw	Rounded/Standard	7.0" (180 mm)	9.9 lb (4,5 kg)
FOR BARE ALUMINUM, ACSR, ACSS, AAC, COPPER, & GUY STRAND											
TG-25	0.1" - 0.6" (2.6 - 15 mm)	2200 lb	✓	✓	-	-	-	Parallel Jaw	Rounded/Fine	2.0" (51 mm)	1.3 lbs (0,6 kg)
TG-30	0.2" - 0.87" (5 - 22 mm)	3000 lbs	✓	✓	-	-	-	Parallel Jaw	Rounded/Fine	2.75" (70 mm)	2.2 lb (1,0 kg)
TG-45	0.2" - 0.87" (5 - 22 mm)	5000 lbs	✓	✓	-	-	-	Parallel Jaw	Rounded/Fine	3.5" (90 mm)	3.3 lb (1,5 kg)
TG-46	0.2" to 0.87" (5 - 22 mm)	8000 lbs	✓	✓	-	-	-	Parallel Jaw	Rounded/Fine	3.5" (90 mm)	3.8 lb (1,7 kg)
FOR COVERED CABLE, COPPER CABLE, GUY STRAND, STEEL STRAND, MESSENGER, TREE CABLE, WIRE ROPE & EHS											
TG-45A	0.2" - 0.87" (5 - 22 mm)	5000 lbs	✓	✓	-	-	-	Parallel Jaw	Rounded/Aggressive	3.5" (90 mm)	3.3 lb (1,5 kg)
TG-45A	0.2" - 0.87" (5 - 22 mm)	8000 lbs	✓	✓	-	-	-	Parallel Jaw	Rounded/Aggressive	3.5" (90 mm)	4.0 lb (1,8 kg)
TG-20**	0.1"- 0.59" (2.6 - 15mm)	2200 lbs	-	✓	-	-	-	Bulldog Jaw	Flat/Aggressive	0.25" (6.4 mm)	1.3 lb (0,6 kg)

*TG-47 features patented TWIST-GRIP™ straight-pull handle to prevent cable damage and distortion. *TG-20 should not be used for Wire Rope and EHS.

MANUAL TOOLS PRODUCT WARRANTY

HUSKIE TOOLS PRODUCTS CARRY A WARRANTY THAT MAKES US A LEADER IN THE UTILITY INDUSTRY.

PRODUCT WARRANTY

MANUAL TOOLS

5 YEARS

The warranty does not cover any damages incurred from a Huskie Tools product including damages to property, bodily injuries and lost wages resulting from such injuries. This warranty solely covers the repair or replacement of tools supplied by Huskie. These remedies are exclusive, and the total liability of Huskie Tools, LLC whether based on contract, warranty, negligence, indemnification, strict liability or otherwise, shall not exceed the purchase price of the tool. In no event, shall Huskie Tools, LLC be liable for consequential, incidental or special damages.

HUSKIE TOOLS, LLC MAKES NO OTHER WARRANTIES OF ANY KIND, EXPRESSED OR IMPLIED, AND ALL IMPLIED WARRANTIES INCLUDING ANY WARRANTY OF MERCHANTABILITY AND FITNESS FOR A PARTICULAR PURPOSE ARE DISCLAIMED.

Huskie reserves the right to determine all warranty claims. Huskie will not warranty tools containing parts or batteries not originally supplied by Huskie. Failure due to misuse, improper maintenance, misapplication, not following instructions or warnings, abuse or repairs attempted by anyone other than Huskie Tools, LLC, or an authorized service center renders this warranty null and void.

REPAIR AND WARRANTY CLAIMS

All claims must be sent to Huskie for inspection and authorization. A Return Goods Authorization (RGA) is required before shipping tools to Huskie. Secure the authorization by telephoning or writing to Huskie Tool's main office with details of the claim. Non-warranty repairs are handled using the same procedure. Repairs exceeding 50 percent of the cost of a new tool will be advised before repairs are made.

REPAIR & WARRANTY INFORMATION CAN ALSO BE FOUND ON OUR WEBSITE AT

huskietools.com/resources/rga/



MANUAL TOOLS PRODUCT WARRANTY



SAFE, TOUGH & DEPENDABLE

Since 1976, Huskie Tools has established a reputation for building hydraulic, battery-powered bending, cutting & crimping tools that are as tough and dependable as the linemen who use them. Our tools are the safest, most durable and dependable and we stake our reputation on it each and every day.

LINEMAN PROVEN – UTILITY APPROVED

We know what it's like to use our tools in a driving rainstorm with thousands of families depending on you to restore their power. Or to have to twist and contort your body just to access an underground area that needs repair. That is why we offer our extensive line of battery-operated hydraulic tools that are among the fastest, and most ergonomically designed and balanced on the market.

No competitor comes close to the breadth of product solutions that we offer, and we're the No. 1 choice of experienced linemen for a reason.

We stand behind our tools and take tremendous pride in serving the needs of the utility industry. Through in-depth industry knowledge and unsurpassed tool expertise, Huskie Tools provides truly exceptional customer service, technical support, and product service.

A SPIRIT OF INNOVATION

We are constantly innovating our products to give our customers the best technology because we know you have the power to choose the tools that are best for you.

We introduced the industry's first line of battery-powered hydraulic tools in 1989, and today we offer over **200 battery-powered tools on the two most popular battery platforms**, Milwaukee & Makita. To provide linemen with the best utility grade tools and choice of battery platforms, we have designed our tools to work with the best performing, most dependable batteries on the market.

INTO THE FUTURE

Since 1976, we've only been doing one thing — building the best, broadest and safest hydraulic cutting and crimping tools and accessories in the utility industry. We live, eat, and breathe lineman tools. They're not just tools, they're our business — **our ONLY business**.

We appreciate our thousands of loyal customers, and we're committed to supporting our industry's ability to choose the tools that work best no matter the project or application. We look forward to continuing to innovate so that we continue to be the #1 choice of utility lineman for the next 50 years.

**THE
POWER
TO
CHOOSE**

BUILT FOR EVERYTHING THAT'S ON THE LINE.™

Since 1976, Chicago born Huskie Tools has been the #1 choice for lineman tools & equipment across every essential electrical utility category. Huskie Tools has the industry's most complete power product line including the largest assortment of hydraulic cutting & crimping tools — over 200 models powered by the most popular battery platforms, Milwaukee® & Makita®, 30 different hand-powered manual tools, remote cutting & crimping heads, dies, die kits, battery & gas powered high-pressure pumps, single & double acting 60, 100, 200-ton presses including titanium, plus TiiGER® material handling & pole pulling equipment & Power Grips™ cable grips.

EXPLORE ALL OF OUR INDUSTRY-LEADING
BATTERY-POWERED HYDRAULIC UTILITY
LINEMEN TOOLS AT [HUSKIETOOLS.COM](https://www.huskietools.com).



TO THE
**POWER
TO CHOOSE**