



HUSKIE TOOLS

POWER  **SYSTEMS™**

TRANSMISSION & SUBSTATION SOLUTIONS

**LARGE HYDRAULIC
CUTTING & COMPRESSION
TOOLS, DIES, PUMPS & HOSES**

HUSKIETOOLS.COM

TRANSMISSION & SUBSTATION SOLUTIONS

POWER TRANSMISSION LINES, SUBSTATION UPGRADES & TOWERS MARKET WORTH \$210.25 BILLION BY 2028

*Source: The Brainy Insights, February 17, 2022

Utility industry expected to continue investments on capital expenditures

Transmission & substation projects targeted for 20% of capital expenditures

Transmission investments — expansion, replacement , hardening/resilience

Full tension & grounding applications require higher tonnage tools

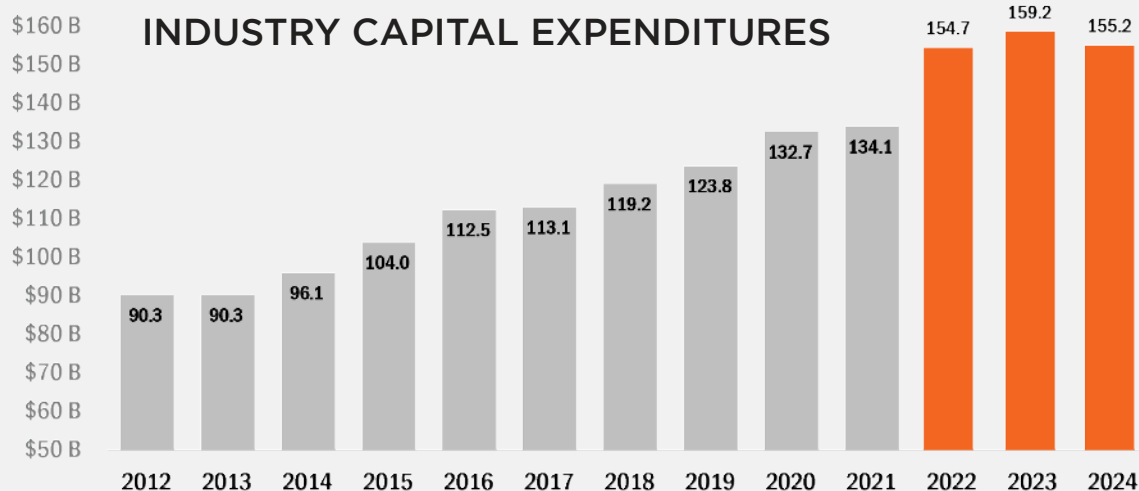
Approximately 50% of transmission work performed by utility contractors

***“\$145 BILLION OVER THE NEXT 10 YEARS
FOR CRITICAL ENERGY INFRASTRUCTURE”***

Lynn Good, CEO, Duke Energy



TRANSMISSION/SUBSTATION MARKET



*Source: EEI Finance Department, member company reports, & S&P Global Market Intelligence (updated Sept 2022).

HUSKIE TOOLS

POWER SYSTEMS™

TRANSMISSION & SUBSTATION SOLUTIONS

Huskie Tools has created an entire system of product solutions specifically targeting transmission and substation applications.

We pay close attention to industry trends and have watched infrastructure upgrades and expansion demands skyrocket.

Our engineers and product teams created the best large scale products for a wide range of transmission and substation maintenance and upgrade applications.

The Huskie Tools Power System product line-up includes large presses — steel & titanium, 60, 100, & 200-ton compression heads, portable cutting & compressions tools, dies, pumps, and hoses.

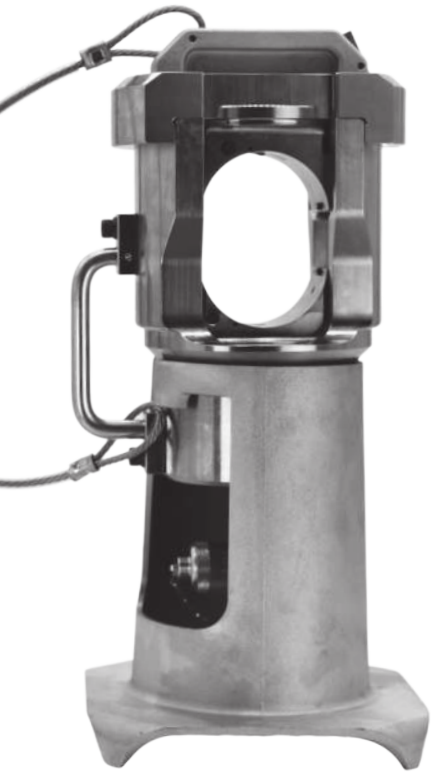


800.860.6170



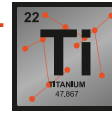
HUSKIETOOLS.COM

LARGE PRESS FAMILY 60-TON COMPRESSION HEADS

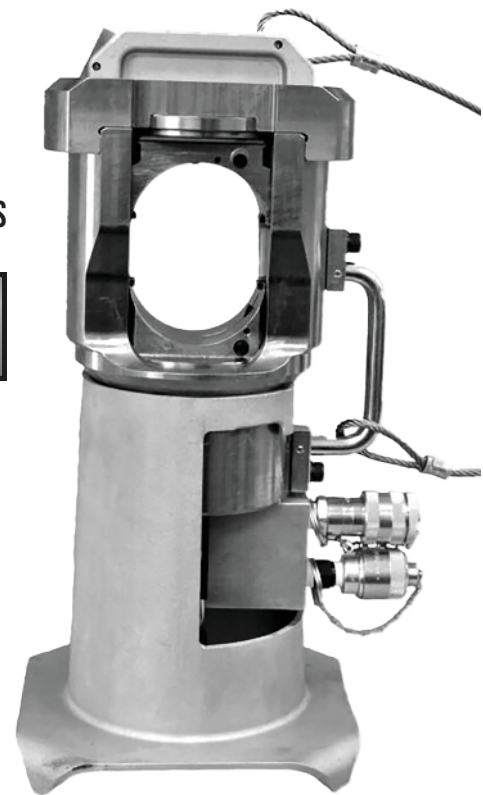


FEATURES

- 60, 100 & 200-TON COMPRESSION HEAD PRESSES
- SINGLE ACTING & DOUBLE ACTING with REMOVABLE BASES
- TITANIUM PRESSES – **30% LIGHTER THAN STEEL** DESIGNED FOR HELICOPTER APPLICATIONS, INCLUDES AERIAL LIFTING RING
- ACCEPTS SHELL-TYPE DIES – ALCOA® or BURNDY®
- REMOVABLE DIE-CAP for EASY CABLE INSERTION
- 5-YEAR WARRANTY with PRODUCT INSPECTION *



*EXCLUDES EP-V60SA WHICH HAS A 2-YEAR WARRANTY



60-TON COMPRESSION HEAD PRESSES



SPECS	EP-600T	EP-6002	EP-60WT	EP-60SA	EP-V60SA
Weight	34 lbs.	47 lbs.	34 lbs.	42 lbs.	47 lbs.
Length	17"	17"	17"	16.2"	17"
Diameter	6"	6"	6"	6"	6"
Stroke	1.5"	1.5"	1.5"	1.5"	1.5"
Oil Volume	303 cc	303 cc	312 cc	312 cc	312 cc
Single/Double Acting	Double	Double	Single	Single	Single
Connector Range Aerial CU/AL Tension Sleeves	Up to 2500 MCM	Up to 2500 MCM	Up to 2500 MCM	Up to 2500 MCM	Up to 2500 MCM
• CU	Up to 1000 MCM	Up to 1000 MCM	Up to 1000 MCM	Up to 1000 MCM	Up to 1000 MCM
• AL	Up to 2300 MCM	Up to 2300 MCM	Up to 2300 MCM	Up to 2300 MCM	Up to 2300 MCM
• ASCR/ACAR	Up to 2156 MCM	Up to 2156 MCM	Up to 2156 MCM	Up to 2156 MCM	Up to 2156 MCM
Lifting Ring	Yes	Yes	Yes	Yes	Yes
Material	Titanium	Steel	Titanium	Steel	Steel
Standard Coupler	3/8" Threaded	3/8" Threaded	3/8" Threaded	3/8" Threaded	3/8" Threaded
Warranty	5-year with product inspection	5-year with product inspection	5-year with product inspection	5-year with product inspection	2-year

100 & 200-TON COMPRESSION HEADS

FEATURES

- DOUBLE ACTING PRESSES ELIMINATE TOOL JAMMING ON CONNECTOR
- REMOVABLE DIE-CAP WITH BAIL HANDLE FOR EASY CABLE & CONNECTOR POSITIONING
- RECESSED LIFTING RING ALLOWS PRESS TO BE OPERATED ON GROUND or OVERHEAD
- DUAL SIDE HANDLES FOR EASY MANEUVERABILITY
- 100-TON ALCOA SHELL-TYPE DIES AVAILABLE

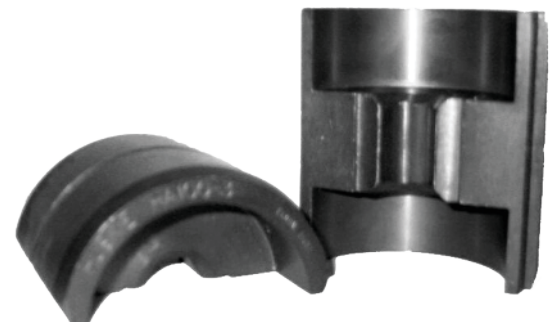


SPECS	EP-100WD	EP-200WA
Weight	78 lbs.	96 lbs.
Length	15"	14"
Diameter	9.5"	7.5"
Stroke	1.18"	1.57"
Oil Volume	410 cc	1134 cc
Single/Double Acting	Double	Double
Connector size [Max]	Up to 2.95" [75mm] MAX	Up to 3.93" [100mm] MAX
Lifting Ring	Yes	No
Standard Coupler	3/8" Threaded	3/8" Threaded
Warranty	5-Year with product inspection	5-year with product inspection



COMPRESSION DIES FOR TRANSMISSION & SUBSTATION

- SHELL-TYPE DIES AVAILABLE for 60 & 100-TON PRESSES
- 60-TON DIES — EQUIVALENT to ALCOA 60-TON DIES & BURNDY "L" TYPE DIES
- 100-TON DIES — EQUIVALENT to ALCOA 100-TON DIES
- P-TYPE DIES for 15-TON TOOLS; P/U ADAPTER AVAILABLE 12-TON U-TYPE DIES
- DIES MARKED with HUSKIE TOOLS & EQUIVALENT ALCOA or BURNDY NUMBER
- CAPABILITY to MANUFACTURE 200-TON DIES FROM DRAWINGS



PORTABLE COMPRESSION & CUTTING TOOLS



- 15-ton compression tools for lugs, splices, H-taps & grounding applications
 - Exclusive in-line C-head allows user to hang tool on cable while positioning connector
- Cutting tools ranging from 1.5" – 5" capacity
 - Ability to cut Cu, Al, ACSR & ACAR
 - Gear cutter is lightest tool available for cutting up to 1590 ACSR
- Handheld tools & lunch box units used in multiple applications
 - Overhead, underground & ground level
- All tools live-line rated up to 75 kV



COMPRESSION SPECS	SL-*7610	SL-*C7610	S7L-*610	S7L-*610TB
Weight	17.6 lbs.	20.7 lbs.	19.8 lbs.	19.8 lbs.
Dimensions [H/L/W]	25" x 5.3" x 4"	22.3" x 6" x 4"	10.5" x 23.5" x 3.5"	10.5" x 23.5" x 3.5"
Compression Force	15-ton	15-ton	15-ton	15-ton
Connector Range	AL #8 AWG – 1250 MCM CU #8 AWG – 1500 MCM H-TAP 750/750	AL #8 AWG – 1250 MCM CU #8 AWG – 1500 MCM H-TAP 750/750	AL #8 AWG – 1250 MCM CU #8 AWG – 1500 MCM H-TAP 750/750	AL #8 AWG – 1000 MCM CU #8 AWG – 1500 MCM H-TAP 750/750
Dies	P-type U-type (with P/U adapter)	P-type U-type (with P/U adapter)	P-type U-type (with P/U adapter)	T8B type 15-ton U-type (with T8B adapter)
Battery Platform	Huskie / Makita / Milwaukee	Huskie / Makita / Milwaukee	Makita / Milwaukee	Makita / Milwaukee
Compression Head	Latch	C-Head	Latch	Latch
Body Style	Inline	Inline	Lunchbox	Lunchbox
Live Line Rating	75 kV	75 kV	75 kV	75 kV
Warranty	5-year tool 3/5-year battery/charger	5-year tool 3/5-year battery/charger	5-year tool 3/5-year battery/charger	5-year tool 3/5-year battery/charger

* Designates battery platform; MK for Makita, RL for Milwaukee



CUTTING SPECS	REC-*754M	REC-*S740L SL-*S740L	S7L-*55	SL-*795YC	REC-*7105YC S7L-*105YC	S7L-*132
Weight	8.3 lbs.	14.3 lbs. 13.0 lbs.	22 lbs.	20.7 lbs.	19.8 lbs. 23.0 lbs.	33.0 lbs.
Dimensions [H/L/W]	14" x 6.5" x 4.5"	11.5" x 17" x 3.6" 20.1" x 5.2" x 4"	10.5" x 24" x 3.5"	26.1" x 9.8" x 4.7"	13.7" x 23.6" x 3.9" 10.5" x 24" x 3.5"	10.5" x 31" x 3.5"
Cutting Force	N/A	8-ton	13-ton	9-ton	9-ton	12-ton
Cutting Capacities	ACSR 1590 MCM AL 1500 MCM CU 750 MCM	ACSR 1590 MCM CU/AL CABLE 1.5"	ACSR 2515 MCM CU/AL 2"	AL 3.7" TELECOM 3.7" LEAD SHEATH 2.5"	AL 4.1" TELECOM 4.1" LEAD SHEATH 2.5"	CU/AL 5" TELECOM 5"
Battery Platform	Huskie / Makita / Milwaukee	Huskie / Makita / Milwaukee	Makita / Milwaukee	Huskie / Makita / Milwaukee	Huskie (REC only) / Makita / Milwaukee	Makita / Milwaukee
Body Style	Pistol Grip	Pistol Grip / Inline	Lunchbox	Inline	Pistol Grip/Lunchbox	Lunchbox
Live Line Rating	75 kV	75 kV	75 kV	75 kV	75 kV	75 kV
Warranty	5-year tool 3/5-year battery/charger	5-year tool 3/5-year battery/charger	5-year tool 3-year battery/charger	5 Year Tool 3/5 Yr. Battery/Charger	5 Year Tool 3/5 Yr. Battery/Charger	5-year tool 3 Year Battery/Charger

HIGH-PRESSURE PUMPS, HOSES & COUPLERS

■ 10,000 PSI PUMPS

- Battery Powered Single & Double Acting Pumps

- ELECTRIC PUMPS

 - 1/2 HP & 3/4 HP Single Acting Pumps

 - 3/4 HP Double Acting Pump

- 4 HP & 5.5 HP GAS POWERED PUMPS

■ HIGH-PRESSURE NON-CONDUCTIVE NYLON HOSES

- Available in lengths from 6 ft – 25 ft

- Heavy-duty shrink-wrap ends for extra durability

- Date coded for preventative maintenance

■ COUPLER ASSORTMENTS in 3/8" & 1/2"

- Threaded couplers standard on large presses

- Snap couplers available – reduces pressure-lock potential

 - Male & female flush-face, non-drip valving



EXCLUSIVE 5-YEAR WARRANTY & NO-CHARGE PRESS INSPECTION

HUSKIE TOOLS INDUSTRY LEADING SPECIAL PRODUCT INSPECTION IS OFFERED EXCLUSIVELY ON OUR 60, 100 & 200-TON PRESSES ONLY *

*EXCLUDES MODEL V60

■ 5-YEAR WARRANTY SETS UTILITY INDUSTRY STANDARD

- Includes one **NO-CHARGE** press inspection during Huskie Tools warranty period.

■ HUSKIE TOOLS PRODUCT INSPECTION INCLUDES:

- Complete teardown evaluation
- Magnaflux testing (includes dissassembly)
- Cylinder wall inspection
- Coupler inspection
- Seal replacement
- Clean, lube, die retainer pin assemblies



BUILT FOR EVERYTHING THAT'S ON THE LINE.™

Since 1976, Chicago born Huskie Tools has been the #1 choice for lineman tools & equipment across every essential electrical utility category. Huskie Tools has the industry's most complete power product line including the largest assortment of hydraulic cutting & compression tools — over 200 models powered by the most popular battery platforms, Milwaukee® & Makita®, 30 different hand-powered manual tools, remote cutting & compression heads, dies, die kits, battery & gas powered high-pressure pumps, single & double acting 60, 100, 200-ton presses including titanium, plus TiiGER® material handling & pole pulling equipment & Power Grips™ cable grips.

INNOVATION

EXPERIENCE

DURABILITY

FULL-LINE

SERVICE

SUPPORT

HUSKIE TOOLS

POWER  **SYSTEMS™**

TRANSMISSION & SUBSTATION SOLUTIONS

Huskie Tools is not affiliated with, authorized, or endorsed by Milwaukee Electric Tool Corporation. Milwaukee listed batteries and chargers are being re-sold by Huskie Tools. Milwaukee® M18™ REDLITHIUM™ are registered trademarks of Milwaukee Electric Tool Corporation. Huskie Tools is not affiliated with, authorized, or endorsed by Makita® Corporation. Makita® listed batteries and chargers are being re-sold by Huskie Tools. Makita® and LXT® are registered trademarks of Makita® Corporation.



HUSKIETOOLS.COM

800.860.6170



**2105 W CORPORATE DR STE B
ADDISON, IL 60101-1470**

© COPYRIGHT 2023 HUSKIE TOOLS - PS02