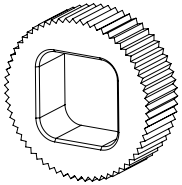
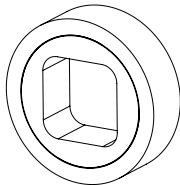


FIBER DRIVER WHEEL CONVERSION KIT

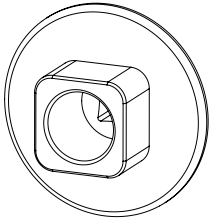
Part Number	Description
18-FFWC	Kit Includes (1) Knurled Drive Wheel, (1) Urethane Drive Wheel, new Square Drive Hub, and new Drive Bushing
FP200122	Drive Wheel - Knurled (Square Hub)
FP200123	Drive Wheel - Rubber 1 (Square Hub)



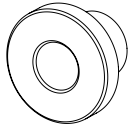
FP200122



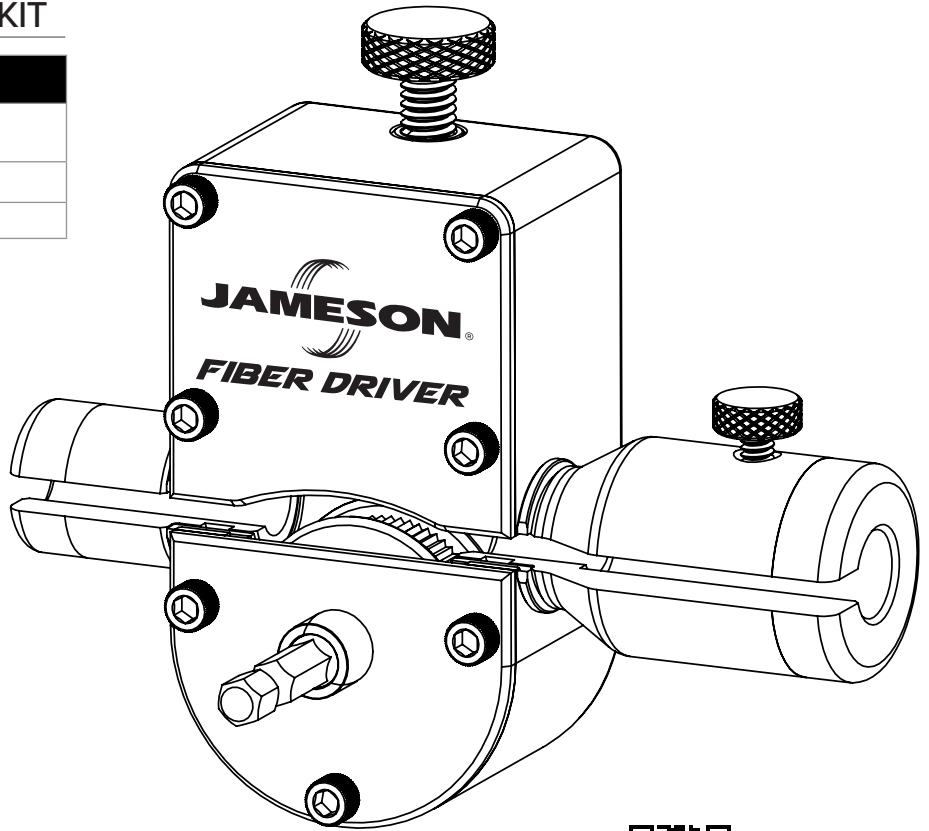
FP200123



Square Drive Hub



Drive Bushing



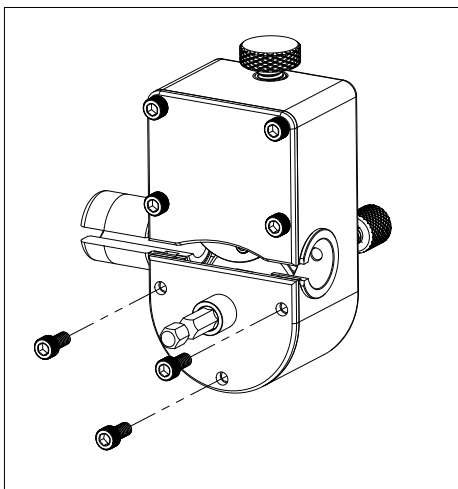
The Fiber Driver can be fitted with one of two available Drive Wheels. The knurled metal wheel can be used when higher traction is necessary. The rubber wheel can be utilized for added versatility with varying fiber configurations or additional grip with varying jacket materials.



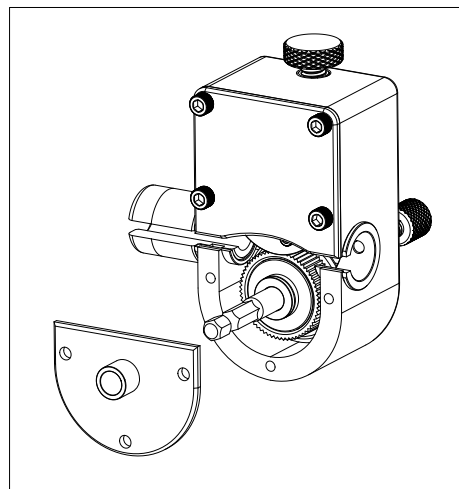
Scan to
learn more

WHEEL CONVERSION INSTRUCTIONS

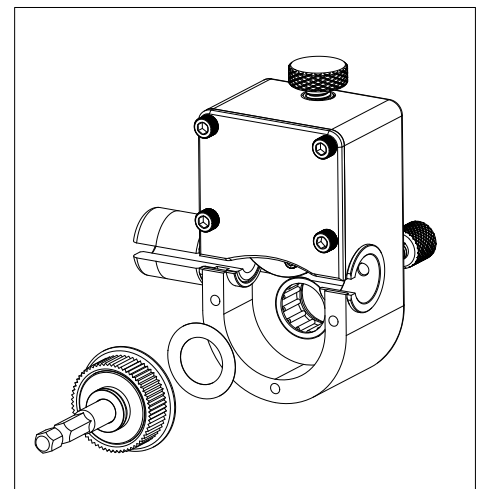
- 1** Remove the three screws from the bottom cover plate.



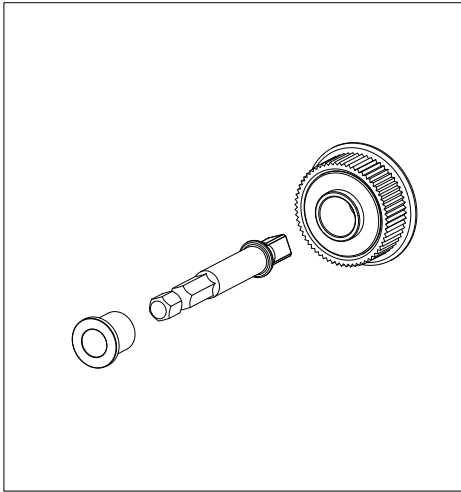
- 2** Remove the bottom cover plate.



- 3** Pull the hex shaft to remove the complete drive wheel assembly. Make sure the ring shim is not removed.

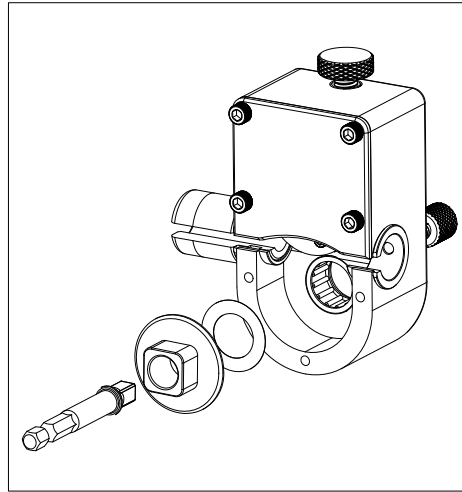


- 4** Separate the inner bushing and the hex shaft from the wheel assembly. The inner bushing and the wheel assembly will not be reused.

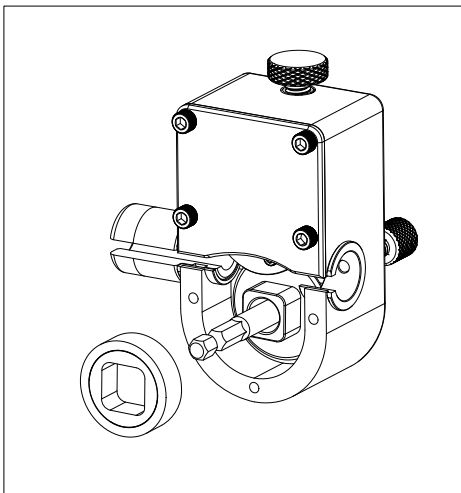


- 5** Install the shaft into the new square wheel hub, and then install it back into the Fiber Driver body, keeping the ring shim in place.

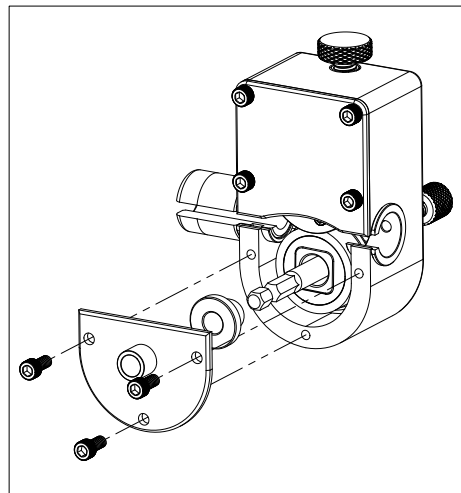
Note: A small amount of hi-temp grease (like mineral grease with clay thickener) may be used on the bearing before installing the new wheel hub.



- 6** Install the desired wheel into the square hub



- 7** Slide the new bushing into the square hub and reinstall the cover plate. Retighten the screws.



SAFETY WARNINGS

While operating Fiber Driver keep all clothing, hair, and fingers or jewelry clear of the device. Follow all applicable safety (OSHA, industry, municipality, etc) regulations.