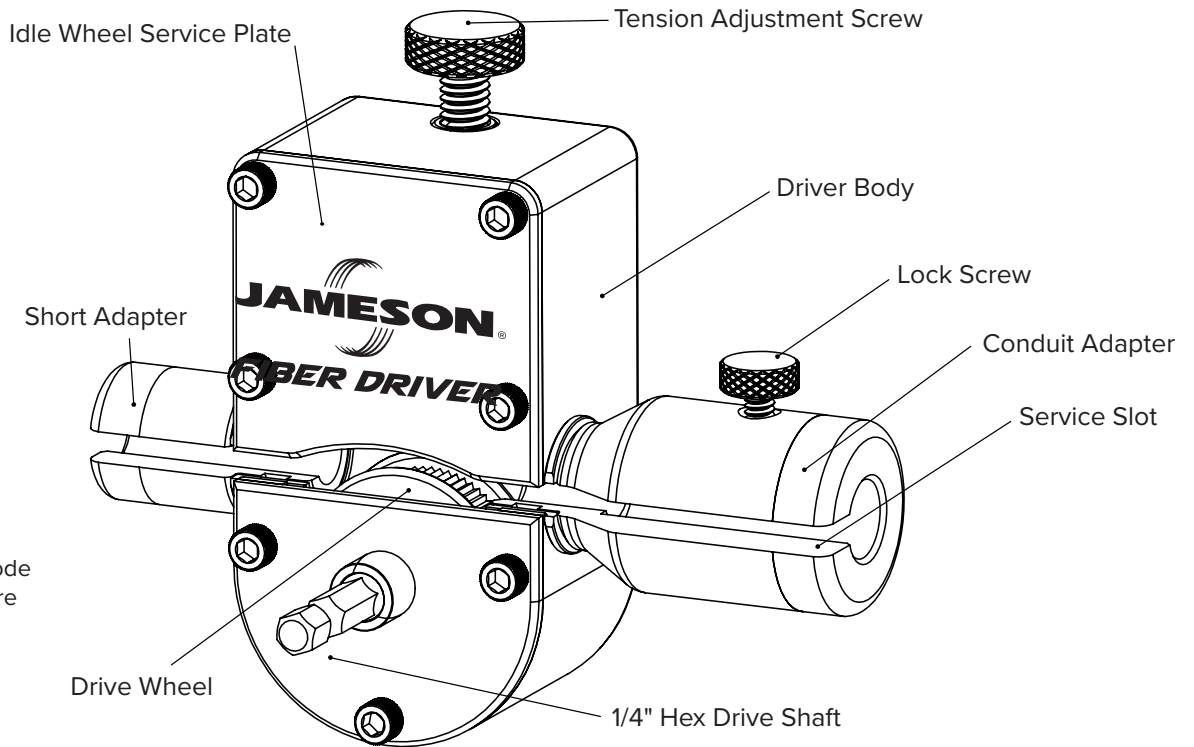


FIBER DRIVER

Designed to push fiberglass reinforced optical cable through various sized conduits



Scan QR Code to learn more

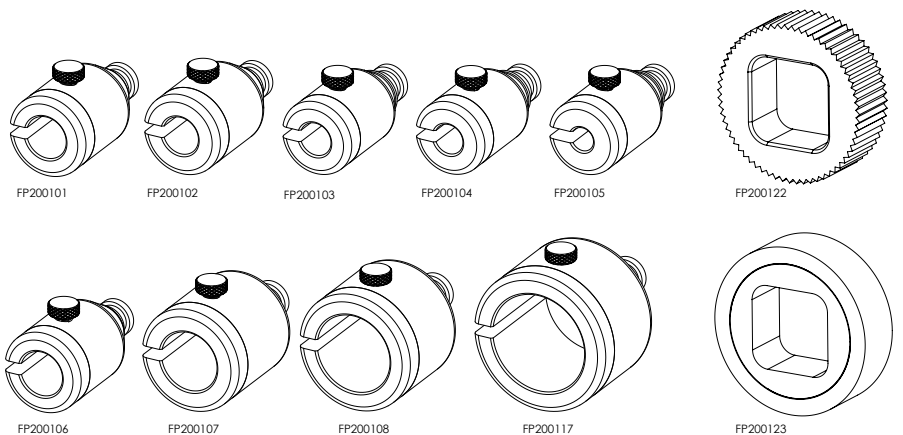
KITS AVAILABLE

Part Number	Description	Drive Wheel		Conduit Adapter									
		Knurled	Rubber	10mm	12.7mm	14mm	16mm	18mm	3/4"	1"	1.325"	1.67"	
18-FFP1	FIBER DRIVER w/ 12.7mm OD Adapter		Y		Y								
18-FFP2	FIBER DRIVER w/ 1" OD Adapter		Y							Y			
18-FFP3	FIBER DRIVER NO ADAPTER	Y	Y										
18-FFPC1	FIBER DRIVER KIT 1, W/CASE	Y	Y	Y	Y	Y	Y	Y					
18-FFPC2	FIBER DRIVER KIT 2, W/CASE	Y	Y			Y	Y	Y	Y	Y			
18-FFPC3	FIBER DRIVER KIT 3, W/CASE		Y		Y								
18-FFPC4	FIBER DRIVER KIT 4, W/CASE	Y	Y							Y			
18-FFPC5	FIBER DRIVER KIT 5, W/CASE	Y			Y					Y		Y	

PATENT PENDING

ACCESSORIES

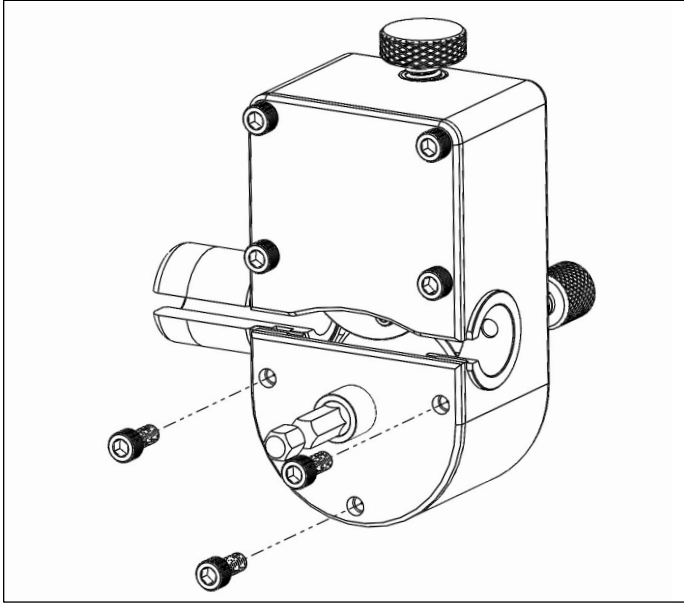
FP200101	FIBER DRIVER CONDUIT ADAPTER, OD 18mm
FP200102	FIBER DRIVER CONDUIT ADAPTER, OD 16mm
FP200103	FIBER DRIVER CONDUIT ADAPTER, OD 14mm
FP200104	FIBER DRIVER CONDUIT ADAPTER, OD 12.7mm
FP200105	FIBER DRIVER CONDUIT ADAPTER, OD 10mm
FP200106	FIBER DRIVER CONDUIT ADAPTER, OD 3/4 in.
FP200107	FIBER DRIVER CONDUIT ADAPTER, OD 1 in.
FP200108	FIBER DRIVER CONDUIT ADAPTER, OD 1.325 in.
FP200117	FIBER DRIVER CONDUIT ADAPTER, OD 1.67 in.
FP200122	Drive Wheel - Knurled (Square Hub)
FP200123	Drive Wheel - Rubber 1 (Square Hub)



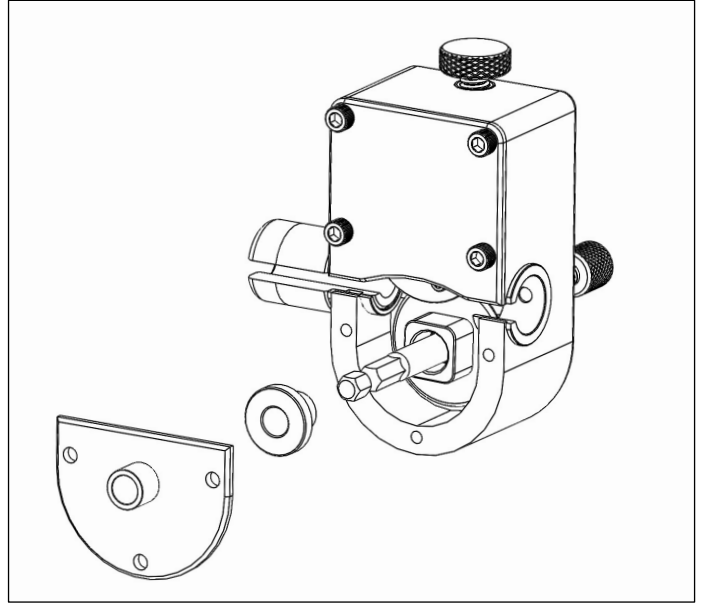
FIBER DRIVER CONFIGURATION

The Fiber Driver can be fitted with one of two available Drive Wheels. The knurled metal wheel can be used when higher traction is necessary. The rubber wheel can be utilized for added versatility with varying fiber configurations or additional grip with varying jacket materials.

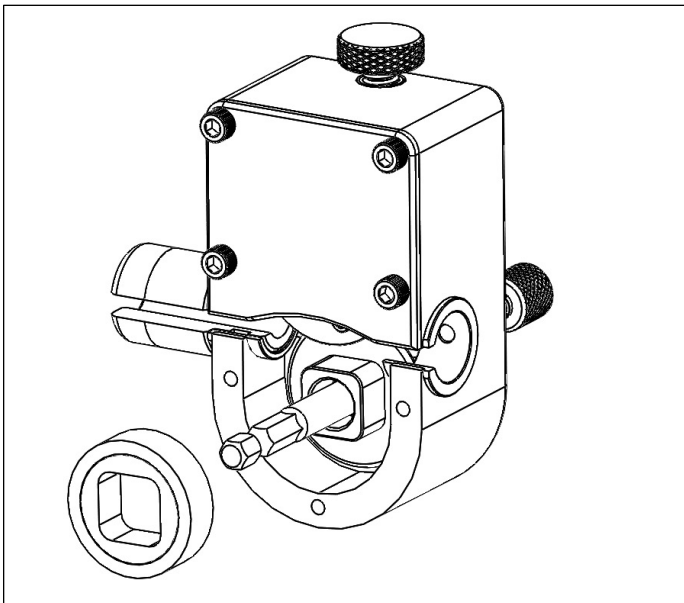
- 1** Remove the three screws from the bottom cover plate.



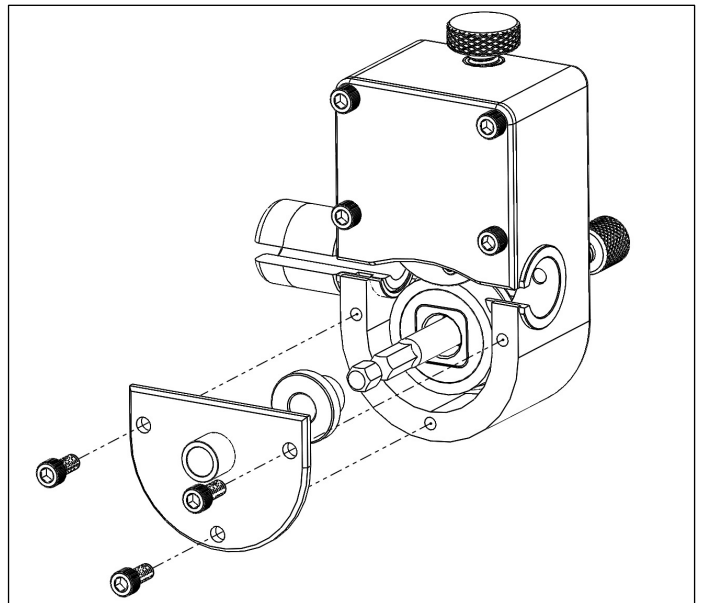
- 2** Remove the cover plate and the bushing.



- 3** Install desired wheel onto square hub.

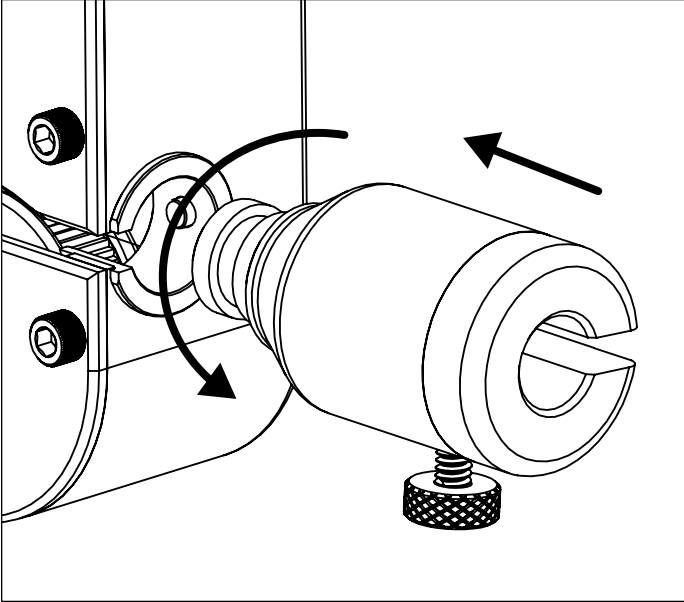


- 4** Reinstall the bushing and cover plate. Retighten the screws.

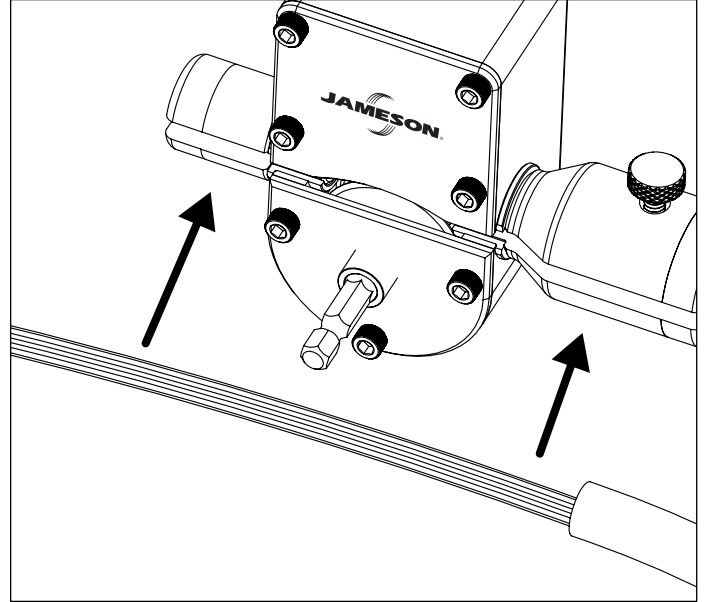


FIBER DRIVER OPERATION

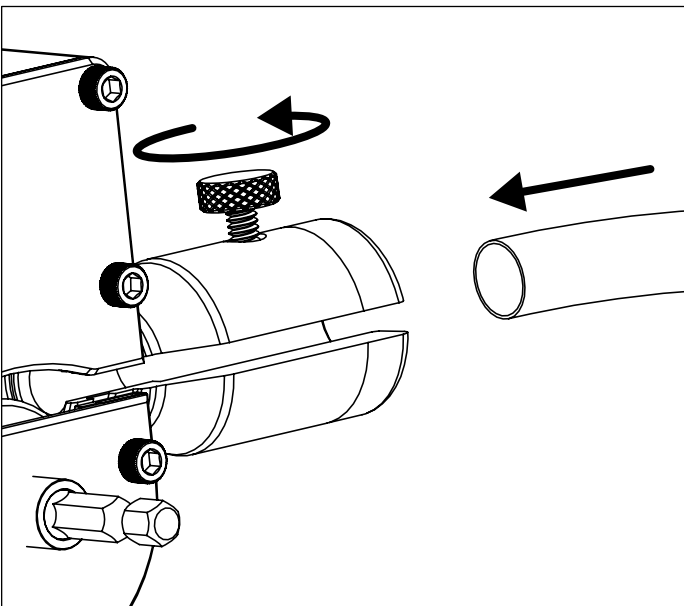
- 1** Insert the Conduit Adapter and Short Adapter into the Driver Body. Align the slots of the adapters to the Service Slot. The adapters can be inserted into either side of the body, so select the combination that best suits the jobsite.



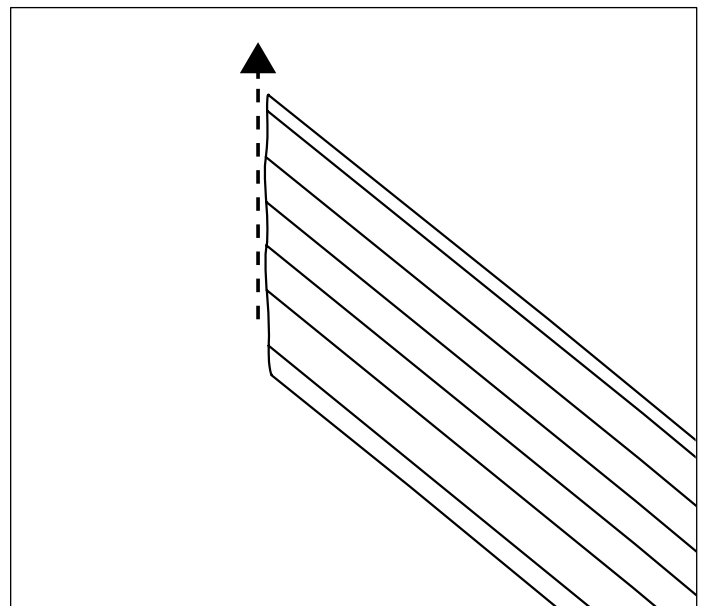
- 2** For mid-span installations align the service slots in both adapters with the slot in the body, and insert the cable into it. Make sure the cable is properly trapped between the top and bottom wheels.



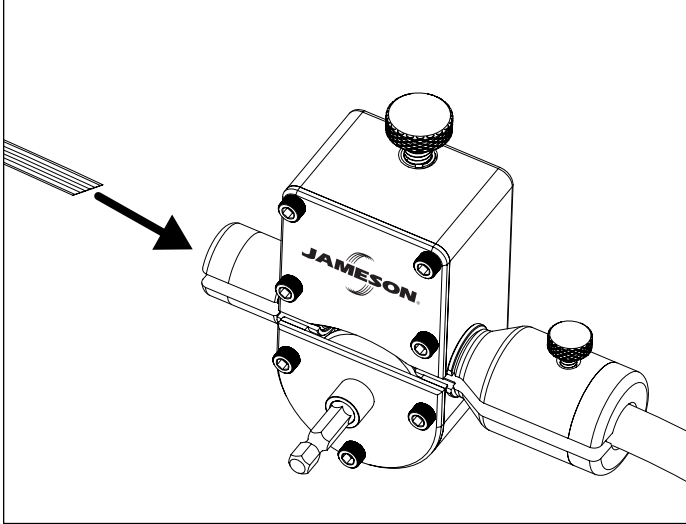
- 3** Insert the Conduit into the Conduit Adapter making sure it's fully inserted and tighten the Lock Screw to lock in the Conduit.



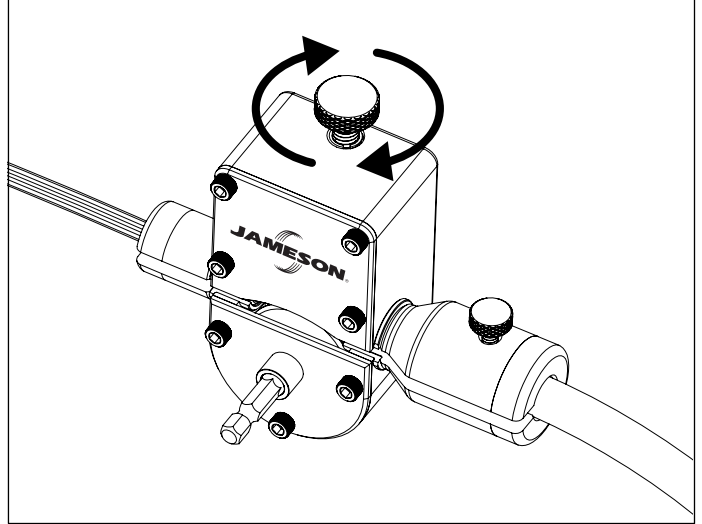
- 4** Cut the end of Fiber Cable at a sharp angle. If needed, wrap the end of the cable in electrical tape.



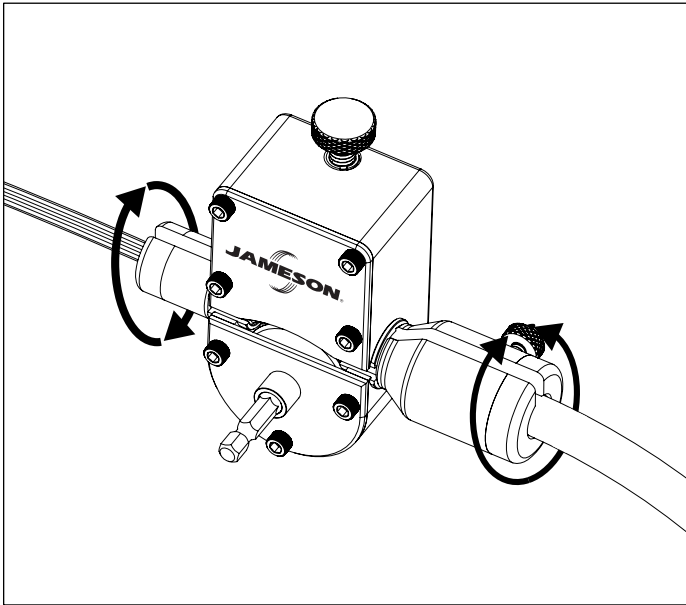
- 5** Insert the Fiber Cable through the Short Adapter, through the Drive Wheel and into the Conduit Adapter.



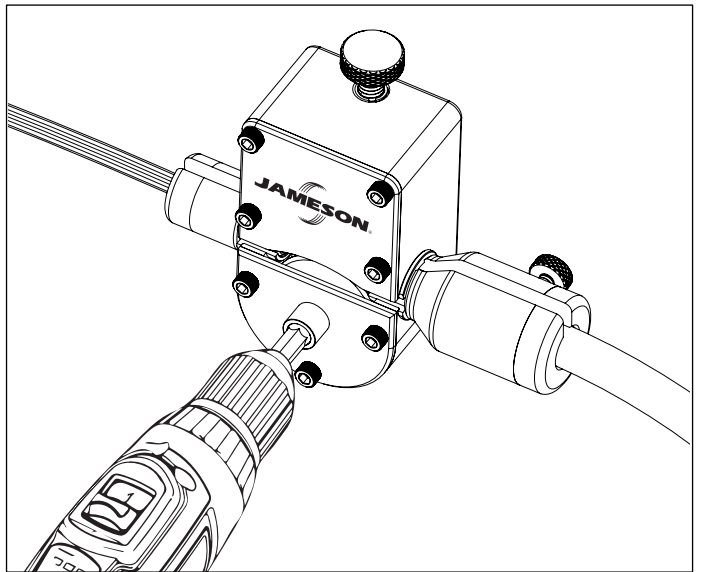
- 6** Tighten the Tension Adjustment Screw until the Idle Wheel firmly grips Fiber Cable.



- 7** Rotate the Small Adapter and the Conduit Adapter so the slots in each adapter do not line up with the Service Slot.



- 8** Connect a power drill to the Hex Drive Adapter. Ensure drill direction is correct. Gradually increase speed of drill, placing your hand on the incoming cable to indicate whether or not the cable is slipping. If the cable is slipping, increase the clamp pressure until the slippage stops.



FIBER DRIVER REMOVAL INSTRUCTIONS

- 1** Stop the drill and disconnect it from the Fiber Driver.
- 2** Rotate the Short Adapter and the Conduit Adapter to align with the Service Slot and remove the Fiber Cable.

Note: When removing the device midspan, disconnect it from the conduit first then remove the fiber from the unit.

MAINTENANCE

Keep all inner components clean. A small amount of hi-temp grease (like mineral grease with clay thickener) may be used on the wheel shafts.



SAFETY WARNINGS

While operating Fiber Driver keep all clothing, hair, and fingers or jewelry clear of the device. Follow all applicable safety (OSHA, industry, municipality, etc) regulations.