

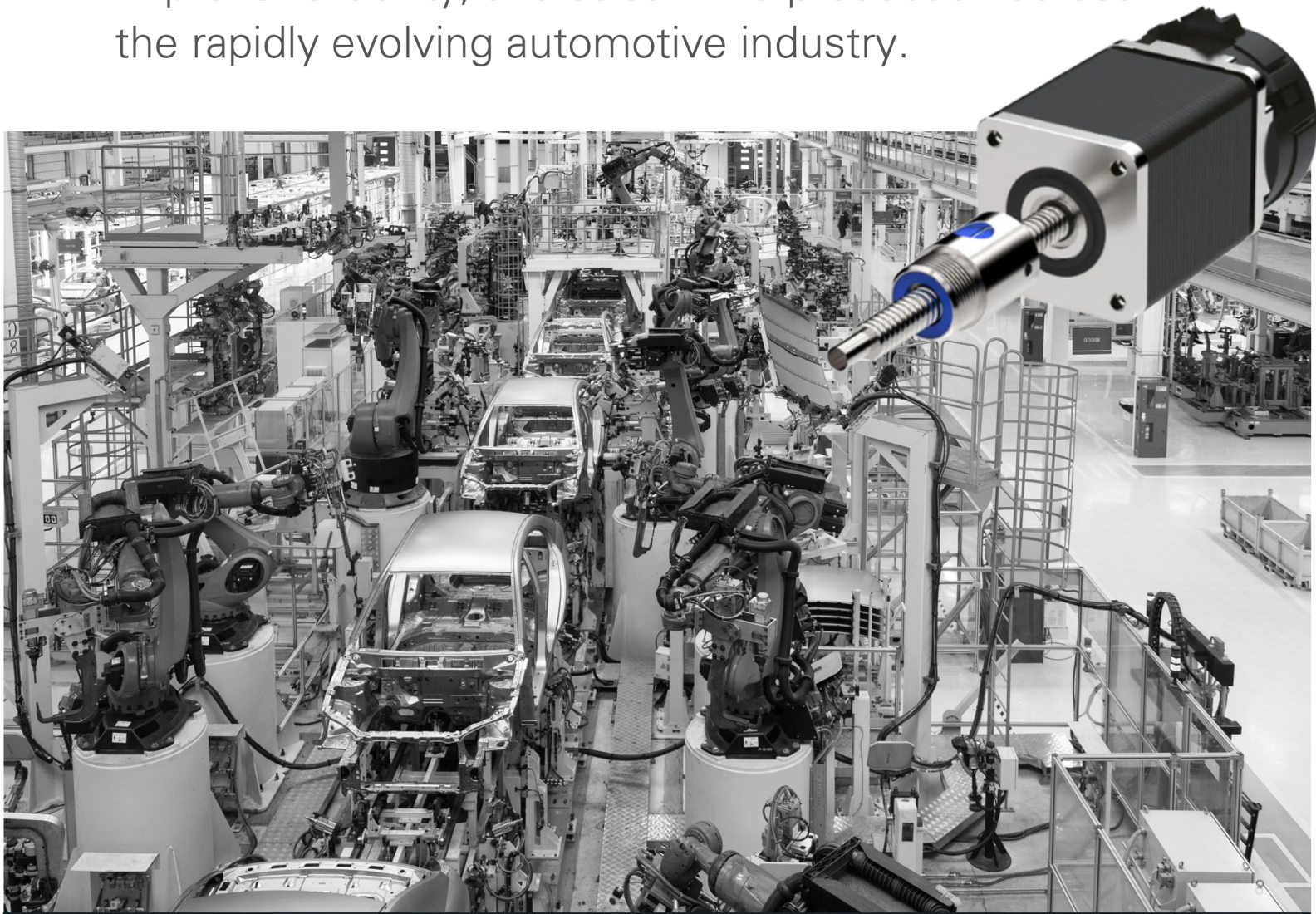


Solutions for the **Automotive Industry**

Precision for a
World in Motion

Engineered Motion. Driven by Innovation.

From advanced vehicle components to fully automated assembly lines, Helix Linear Technologies delivers precision motion systems that enhance performance, improve reliability, and streamline production across the rapidly evolving automotive industry.



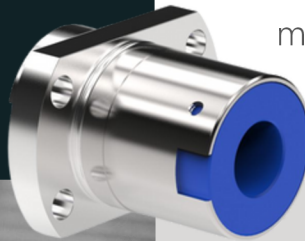
Our solutions are designed to meet the demands of modern vehicle platforms, including electric and hybrid technologies as well as the high-speed, high-accuracy requirements of automotive manufacturing.

Whether supporting intricate interior adjustments, battery module actuation, or robotic assembly processes, Helix motion systems help manufacturers drive innovation and efficiency at every stage of the vehicle lifecycle.

Precision Across the Entire Automotive Ecosystem

Helix Linear's motion control solutions are trusted across both on-vehicle systems and production automation.

Our components support applications in electric vehicles, lightweight chassis systems, and smart interiors, as well as in robotics and fixtures used throughout manufacturing facilities. Designed for precision, compactness, and durability, our linear motion systems meet the demands of modern automotive innovation.



Key Automotive Applications:

- Battery module handling systems
- Seat positioners and steering column actuators
- Charging port actuation
- EV thermal management systems
- Robotic welding and part alignment
- Precision fixturing and assembly automation

Featured Products:

- Compact Linear Actuators
- Custom Lead Screws & Ball Screws
- Anti-Backlash Nut Assemblies
- Stepper Motor Actuators
- Stainless Steel Components for Corrosive Environments

Compact, Customizable, and Production-Ready

Helix products are engineered for the high-throughput, high-precision demands of the automotive industry. With customizable stroke lengths, thread pitches, and mounting options, our components seamlessly integrate into vehicle platforms and automation lines alike.

Whether you need ultra-quiet performance for interior controls or rugged motion systems for welding robotics, Helix delivers motion precision that meets production goals and performance standards.

Product Advantages:

- High-load capacity with smooth operation
- Compact footprints ideal for space-constrained vehicle systems
- Low backlash options for enhanced accuracy
- Long-life designs for repetitive motion environments
- Lightweight materials to support EV weight reduction goals



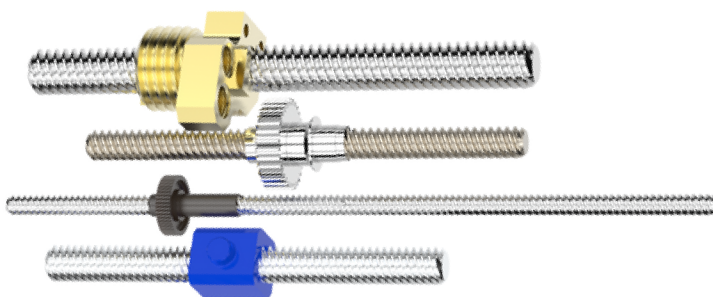
Quality, Compliance & Collaboration

Helix Linear Technologies is AS9100:2016 certified and experienced in meeting the demanding quality and documentation standards of the automotive sector.

We work hand-in-hand with Tier 1 and Tier 2 suppliers to develop custom motion solutions that align with evolving trends in electric mobility, automation, and sustainable manufacturing. Whether prototyping or scaling for high-volume production, Helix is your motion partner from concept to roll-out.

Key Capabilities:

- Fast prototyping and scalable production
- In-house design and testing resources
- Traceable quality documentation
- Automotive-grade lubricants and finishes
- Expertise in supporting lean manufacturing systems



Certifications & Standards:

- AS9100:2016 certified
- RoHS-compliant materials
- REACH-compatible grease and coatings
- Traceability on critical components



Accelerating Automotive Innovation with Motion Precision

For over a decade, Helix Linear Technologies has empowered automotive manufacturers with precise, reliable motion systems built to keep pace with a rapidly evolving industry. Whether it's enabling cleaner electric vehicles, smarter interiors, or more efficient factories, our engineering expertise helps drive the future of mobility.



Helix Linear Technologies
23200 Commerce Park, Beachwood, OH 44122

216-485-2232
sales@helixlinear.com
helixlinear.com