

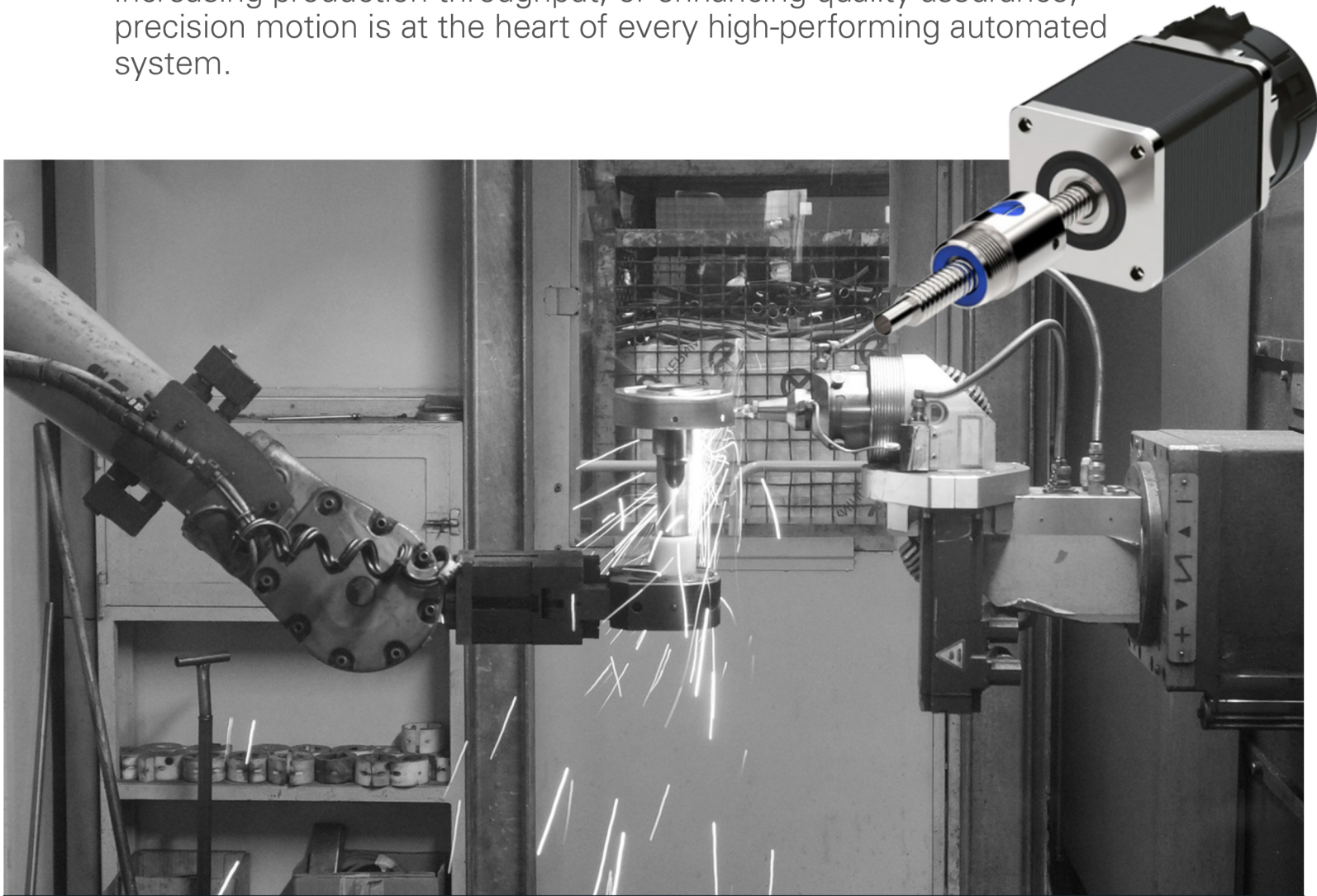


Solutions for **Factory Automation**

Precision Motion that
Powers Productivity

Engineered for Industrial Efficiency

In modern manufacturing, automation is more than just a competitive edge, it's essential. Whether you're streamlining repetitive tasks, increasing production throughput, or enhancing quality assurance, precision motion is at the heart of every high-performing automated system.



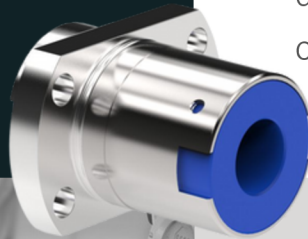
Helix Linear Technologies provides the actuation solutions manufacturers need to keep production lines running smoothly, accurately, and reliably.

Our motion control systems are engineered for integration into a wide range of factory automation platforms ~ from robotic arms and gantries to packaging equipment and multi-axis assembly cells. With durable materials, high-speed performance, and customizable options, Helix Linear helps manufacturers build smarter, faster, and more flexible systems that scale with demand.

Motion Solutions that Keep Your Lines Moving

In today's fast-paced production environments, motion systems must deliver speed, precision, and durability. Helix Linear's components are trusted in applications ranging from part picking and placement to sealing, labeling, welding, and testing.

Our lead screws, actuators, and nut assemblies enable fine positioning, consistent force delivery, and minimal downtime which drives efficiency across diverse automation use cases.



Key Applications:

- Robotic arms and pick-and-place systems
- Conveyor positioning and sorting
- Automated packaging and labeling
- Palletizing and material handling
- Precision metering and dispensing
- Multi-axis CNC and testing automation

Core Products:

- High-Speed Lead Screws
- Electromechanical Linear Actuators
- Custom Anti-Backlash Nut Assemblies
- Stepper Motor Actuators
- Maintenance-Free Motion Systems



Designed for Demanding Production Environments

Helix motion systems are built to thrive under 24/7 operating conditions, with precision components that reduce wear and extend service intervals.

Our engineering team understands the mechanical and environmental stresses found in industrial facilities. From vibrations and contaminants to load changes and thermal fluctuations, we design products that withstand them all while maintaining accuracy and repeatability.

Performance Features:

- High-load, high-speed operation
- IP-rated sealing and dust resistance
- Long lifecycle and minimal maintenance
- Rigid assemblies with low backlash
- Smooth motion ideal for precision assembly



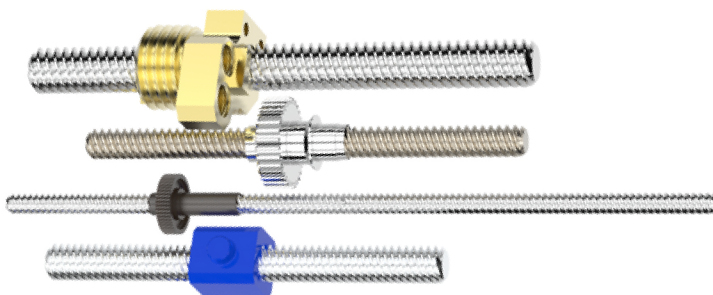
Custom Motion Solutions for Industry 4.0

Helix Linear Technologies partners with system integrators and OEMs to develop motion components ready for smart automation environments. Our solutions integrate seamlessly with PLCs, vision systems, sensors, and Industry 4.0 platforms, enabling real-time feedback, flexible manufacturing, and data-driven optimization.

Whether you need custom mounts, motion tuning, or scalable design for multiple product SKUs, we'll help you build a system that's both intelligent and efficient.

Key Capabilities:

- PLC-compatible motion systems
- Quick prototyping and design iteration
- Compact solutions for tight enclosures
- Configurable stroke lengths and drive mechanisms



Certifications & Standards:

- AS9100:2016 certified
- RoHS-compliant materials
- REACH-compatible grease and coatings
- Traceability on critical components



Empowering the Future of Factory Automation

With a focus on precision, durability, and innovation, Helix Linear Technologies supports manufacturers in creating automation systems that maximize output, minimize errors, and reduce downtime. From standard components to fully custom designs, we provide the motion control solutions that power industrial transformation, one axis at a time.



Helix Linear Technologies
23200 Commerce Park, Beachwood, OH 44122

216-485-2232
sales@helixlinear.com
helixlinear.com