








## Mecca Pull Handle 130mm

### Finish & SKU

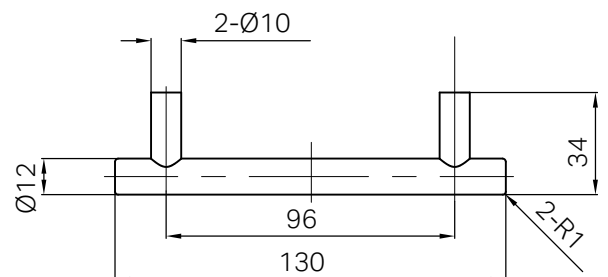
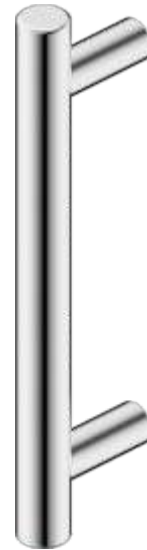
 <b>Chrome</b> 25F002CH	 <b>Brushed Nickel</b> 25F002BN
 <b>Matte Black</b> 25F002MB	 <b>Brushed Gold</b> 25F002BG
 <b>Brushed Bronze</b> 25F002BZ	 <b>Gun Metal</b> 25F002GM
 <b>Matte White</b> 25F002MW	

### Warranty



### Features

- 316 stainless steel construction
- 96mm hole-to-hole distance
- Suitable for panel thicknesses from 15–25 mm or 35–40mm
- Supplied with two screw lengths: M4 × 30mm and M4 × 45mm



### Maintenance And Care

- Regularly check the mixer and connections for signs of wear or leaks.
- Clean the tap with mild soapy water to maintain its appearance, avoiding harsh chemicals and abrasive materials that may damage the finish.

- Dimensions are nominal measurements only.