

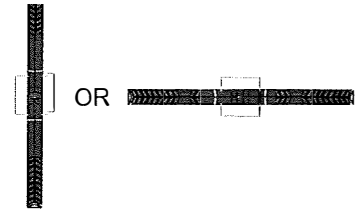


# ALLEGRI.

BY KALCO LIGHTING™

Customer Service : (702) 361-4345, (800) 525-2655, [customer.service@kalco.com](mailto:customer.service@kalco.com)

Assembly & Installation Instructions for:  
035721 Wall Sconce



**WARNING - TO REDUCE THE RISK OF FIRE OR INJURY:**

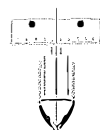
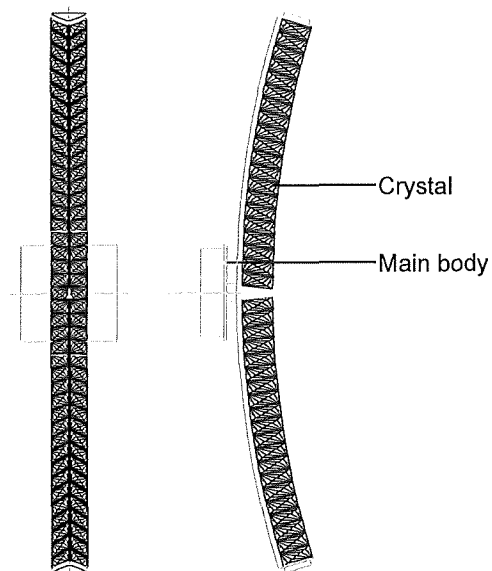
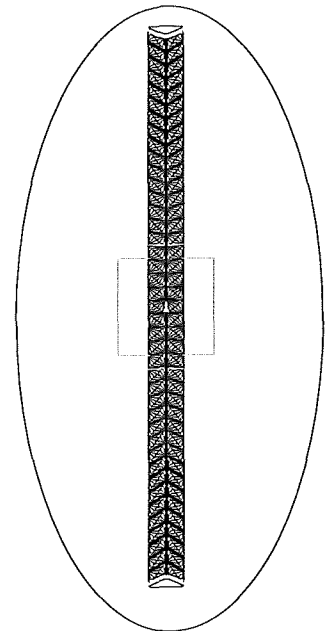
1. If you are unfamiliar with electrical wiring, call a qualified electrician to install this unit. More than one person may be necessary to install fixture, so make sure you have enough qualified help.
2. Turn off the power to the fixture's circuit at the service panel. Use a voltage detector to verify that the power is off.
3. DO NOT install bulb which exceeds the maximum wattage specified on the socket label.

**Fixture Assembly**

Step 1. Install the LED STRIPS.

Step 2. This wall sconce could be installed vertically or horizontally.

Vertical



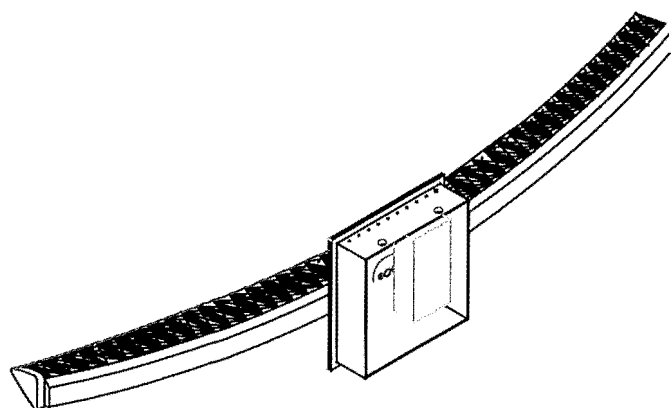
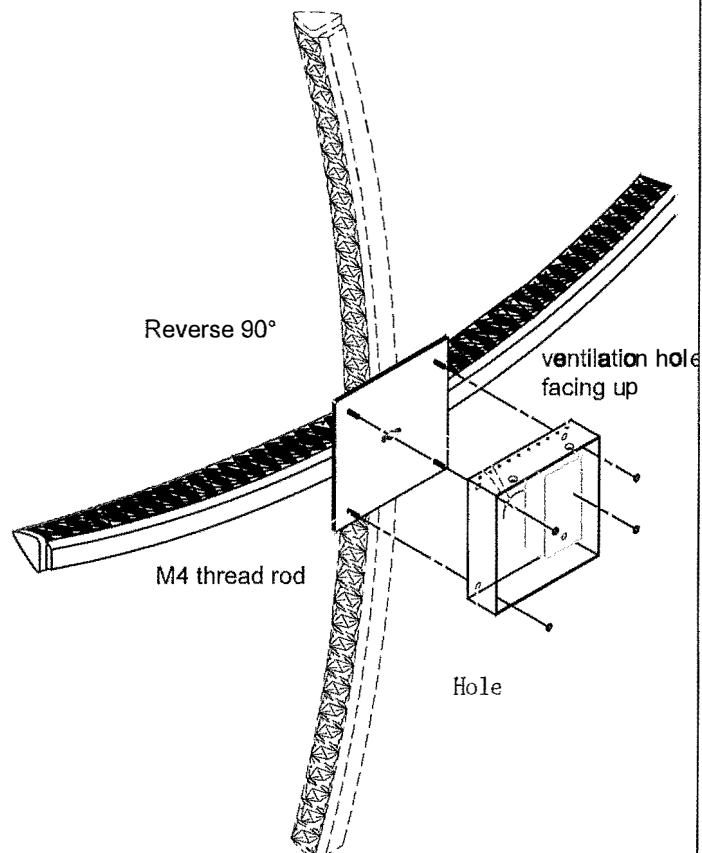
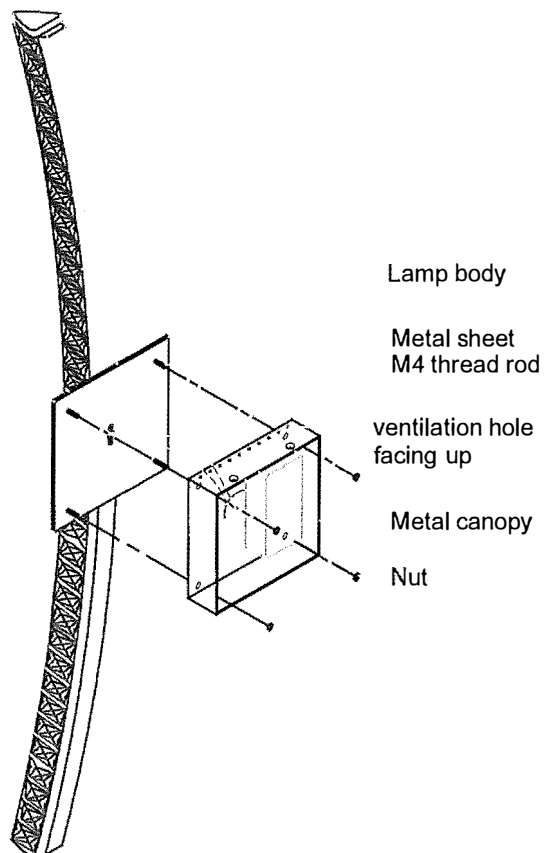


# ALLEGRI.

BY KALCO LIGHTING™

Customer Service : (702)361-4345, (800)525-2655, customer.service@kalco.com

## Fixture Assembly



### Horizontal installation steps

1. turn off the nut, separate lamp body and metal sheet from metal canopy. see the drawing A .
2. rotate 90° on the lamp body and metal sheet, metal canopy no rotation, see drawing B.
3. pass through the M4 thread from metal sheet to the hole on metal canopy, fix by nut, see drawing C.



# ALLEGRI.

BY KALCO LIGHTING™

Customer Service : (702) 361-4345, (800) 525-2655, [customer.service@kalco.com](mailto:customer.service@kalco.com)

Assembly & Installation Instructions for:  
035721 Wall Sconce

## Fixture Assembly

Step 3. Fasten 2 screws into the mounting plate so they extend away from wall when the mounting plate is installed.

Step 4. Attach the mounting plate to the outlet box with screws.

Step 5. Refer to wiring diagram.  
Splice the ribbed side of fixture cord to the white supply wire from outlet box with wire connector. Splice the smooth side of the fixture cord to black supply wire from outlet box with wire connector

Step 6. Carefully tuck in all wires. Attach the backplate to the crossbar with the mounting screws. Secure the fixture to the wall with the flat screws.

