

Customer Service: (702) 361-4345, (800) 525-2655, [customer.services@kalco.com](mailto:customer.services@kalco.com)

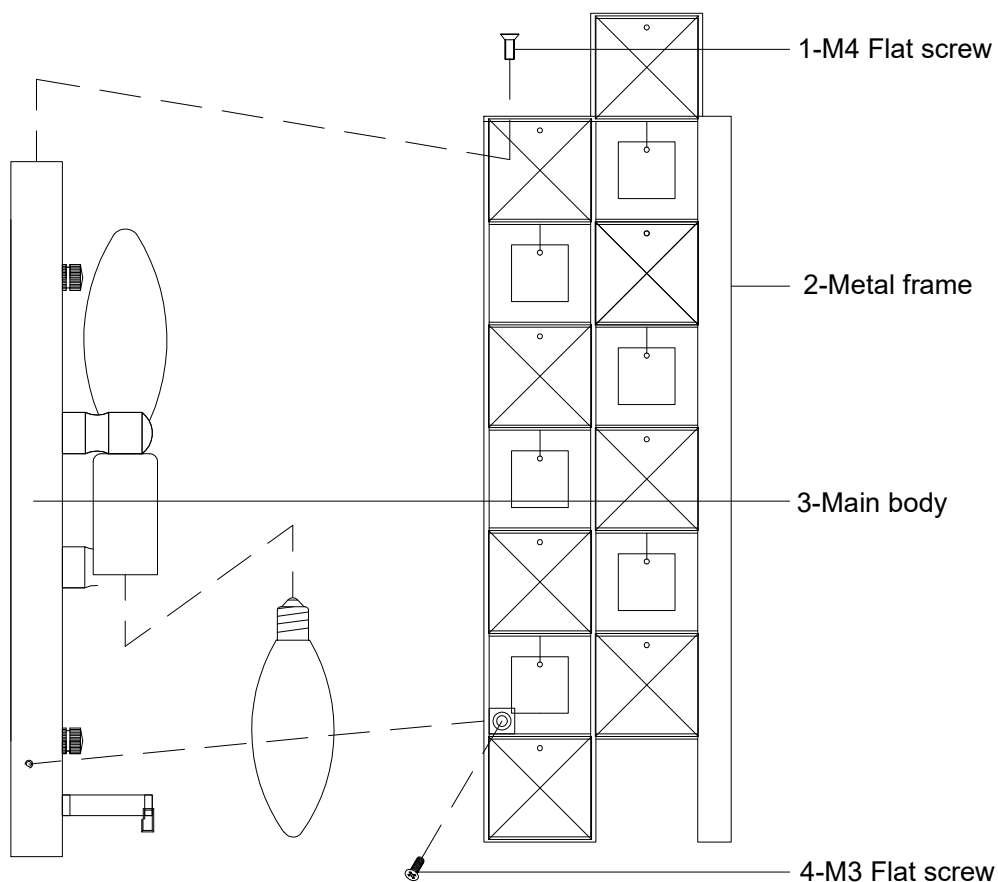
**WARNING - TO REDUCE THE RISK OF FIRE OR INJURY:**

- 1.If you are unfamiliar with electrical wiring, call a qualified electrician to install this unit. More than one person may be necessary to install this fixture, make sure you have enough qualified help.
- 2.Turn off the power to the fixture's circuit at the service panel. Use a voltage detector to verify that the power is off.
- 3.DO NOT install bulb exceeding the maximum wattage specified on the socket label.

**Fixture Assembly:**

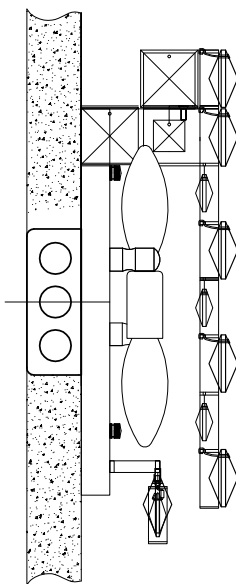
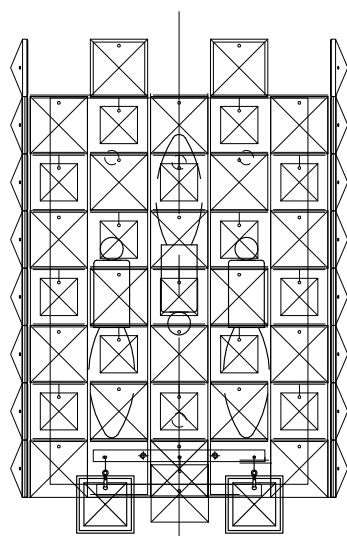
Step 1. Screw bulbs into the sockets. Do not use bulbs that exceed 40W.

Step 2. Fix part #2 to part #3 by using part #1 and #4.

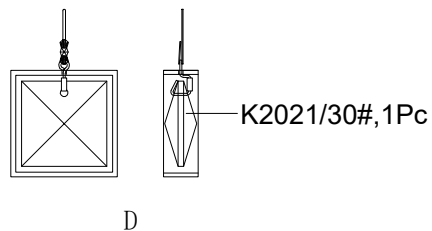
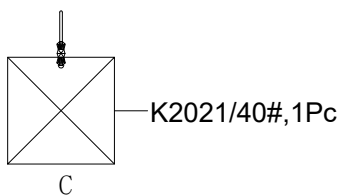
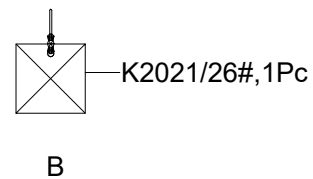
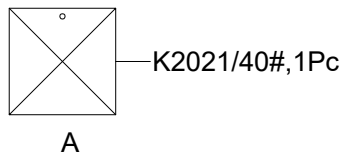
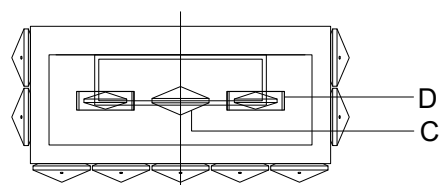
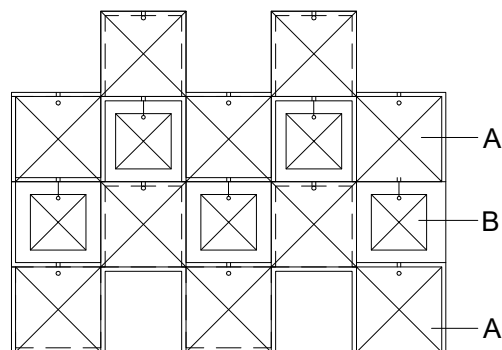


Customer Service: (702) 361-4345, (800)525-2655, [customer.service@kalco.com](mailto:customer.service@kalco.com)

**Crystal Assembly:**



Code	Qty
A	36
B	27
C	1
D	2



Customer Service: (702) 361-4345, (800)525-2655, [customer.service@kalco.com](mailto:customer.service@kalco.com)

### Crystal Assembly:

Step 4. Fasten 2 screws into mounting the plate so they extend away from wall when mounting plate is installed.

Step 5. Attach the mounting plate to the outlet box with screws.

Step 6. Refer to wiring diagram.  
Splice the ribbed side of fixture cord to the white supply wire from outlet box with wire connector. Splice the smooth side of the fixture cord to black supply wire from outlet box with wire connector

Step 7. Carefully tuck in all wires. Attach the backplate to the crossbar with the mounting screws. Secure the fixture to the wall with the decorative nuts.

