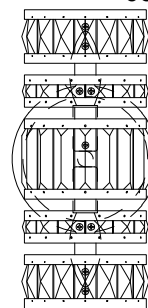




Customer Service: (702) 361-4345, (800) 525-2655, customer.services@kalco.com

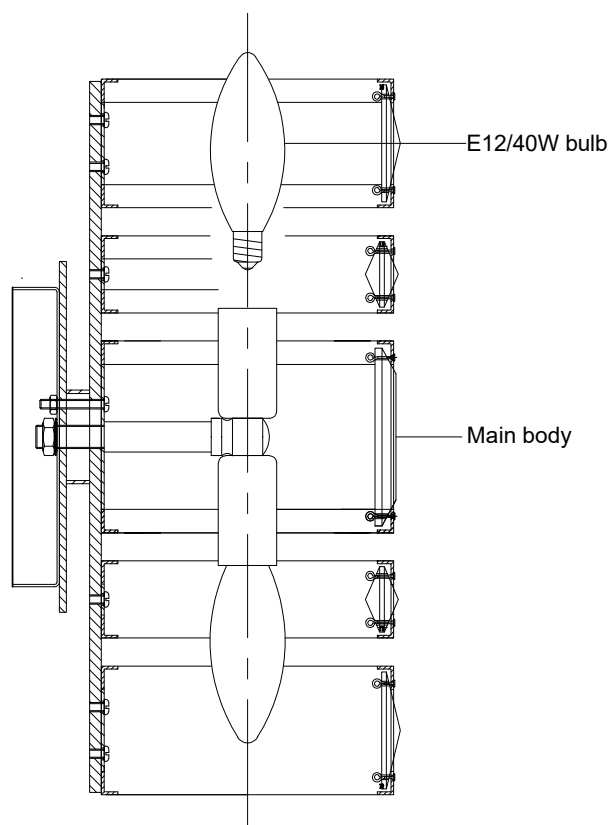
WARNING - TO REDUCE THE RISK OF FIRE OR INJURY:

- 1.If you are unfamiliar with electrical wiring, call a qualified electrician to install this unit. More than one person may be necessary to install this fixture, make sure you have enough qualified help.
- 2.Turn off the power to the fixture's circuit at the service panel. Use a voltage detector to verify that the power is off.
- 3.DO NOT install bulb exceeding the maximum wattage specified on the socket label.



Fixture Assembly:

Step 1.Install E12 bulbs. Do not use bulbs that exceed 40W.



Customer Service: (702) 361-4345, (800)525-2655, customer.service@kalco.com

Step 2. Fasten 2 screws into the mounting plate so they extend away from wall when the mounting plate is installed.

Step 3. Attach the mounting plate to the outlet box with screws.

Step 4. Refer to wiring diagram.
Splice the ribbed side of fixture cord to the white supply wire from outlet box with wire connector. Splice the smooth side of the fixture cord to black supply wire from outlet box with wire connector

Step 5. Carefully tuck in all wires. Attach the backplate to the crossbar with the mounting screws. Secure the fixture to the wall with the flat screws.

