

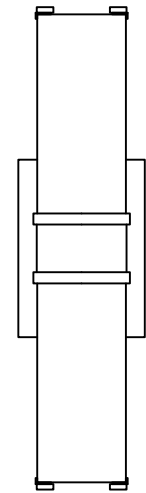
If you have any questions or problems assembling your fixture please call us for assistance. Customer Service: (702)361-4345 or (800)525-2655, customer.services@kalco.com

WARNING:

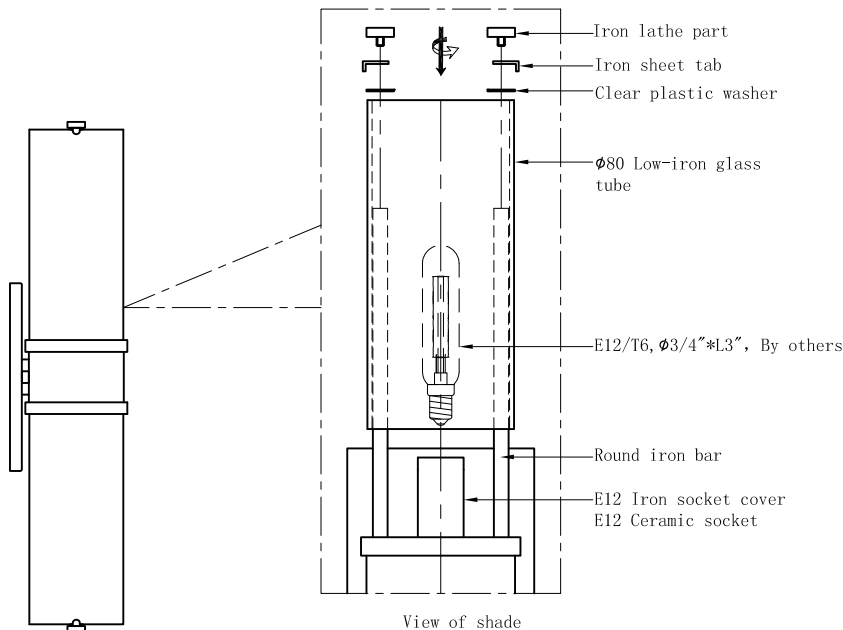
1. This fixture must be installed by qualified electrician and contractors understanding ceiling hanging points, structure and strength to meet building code.
2. Turn off the power to the fixture's circuit at the service panel. Use a voltage detector to verify that the power is off.

FIXTURE ASSEMBLY :

1. Unpack fixture carefully, note fixture frame comes fully assembled .
2. Use 8-32 screw to fix crossbar on J-box.
3. Refer to wiring diagram. Splice the ribbed side of fixture cord to the white supply wire from outlet box with wire connector. Splice the smooth side of the fixture cord to black supply wire from outlet box with wire connector.
4. Carefully tuck in all wires, attach the back plate with the mounting screw on the crossbar. Secure fixture with shell knobs.
5. Use (2) metal lathe parts to fix back plate onto the crossbar.
6. Install E12/T6 bulbs,do not use bulbs that exceed 40W.
7. Install glass shades on the frame according to below diagram .



(FRONT VIEW)



Wiring Diagram

