



ASSEMBLY & INSTALLATION INSTRUCTIONS

MODEL: 521524PWB

KALCO
Handcrafted Since 1980

I M A G E

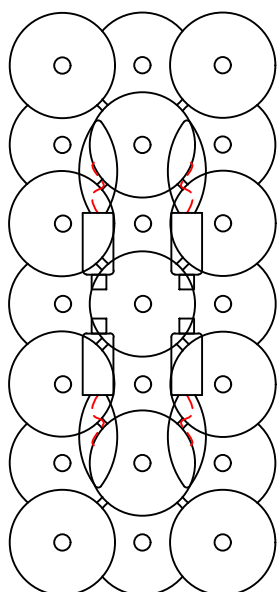
If you have any questions or problems assembling your fixture please call us for assistance.

Customer Service: (702) 361-4345 or (800) 525-2655

customer.service@kalco.com

WARNING! TO REDUCE THE RISK OF FIRE OR INJURY PLEASE TAKE PRECAUTION AND FOLLOW THE STEPS BELOW.

1. If you are unfamiliar with electrical wiring, call a qualified electrician to install this unit. More than one person may be necessary to install fixture, make sure you have enough qualified help.
2. Turn off the power to the fixture's circuit at the service panel.
3. Use a voltage detector to verify that the power is off.
4. DO NOT install bulb which exceeds the maximum wattage specified on the socket label.



Si vous avez des questions ou des problèmes assemblage de votre dispositif s'il vous plait appel pour l'assistance.

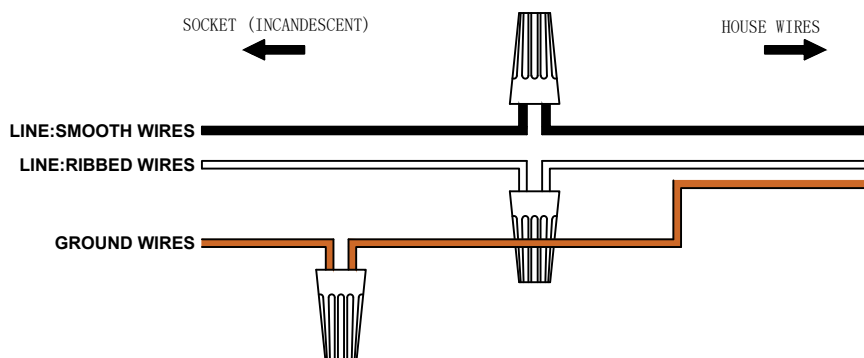
Customer Service: (702) 361-4345 or (800) 525-2655

customer.service@kalco.com

AVERTISSEMENT! POUR RÉDUIRE LES RISQUES D'INCENDIE OU DE BLESSURES S'IL VOUS PLAÎT PRENDRE DES PRÉCAUTIONS ET SUIVEZ LES ÉTAPES CI-DESSOUS.

1. Si vous n'êtes pas familier avec le câblage électrique, appelez un électricien qualifié pour installer cet appareil. Plus d'une personne peut être nécessaire d'installer appareil, assurez vous que vous disposez de l'aide assez qualifié.
2. Coupez l'alimentation au circuit de l'appareil sur le tableau de service. Utiliser un détecteur de tension pour vérifier que l'alimentation est coupée.
3. NE PAS installer l'ampoule qui excède la puissance maximale indiquée sur l'étiquette du socket.

WIRING DIAGRAM





ASSEMBLY & INSTALLATION INSTRUCTIONS

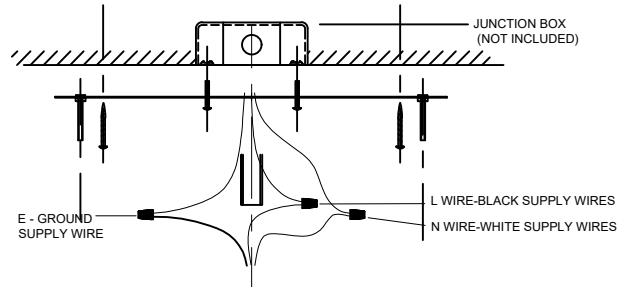
MODEL: 521524PWB

KALCO
Handcrafted Since 1980

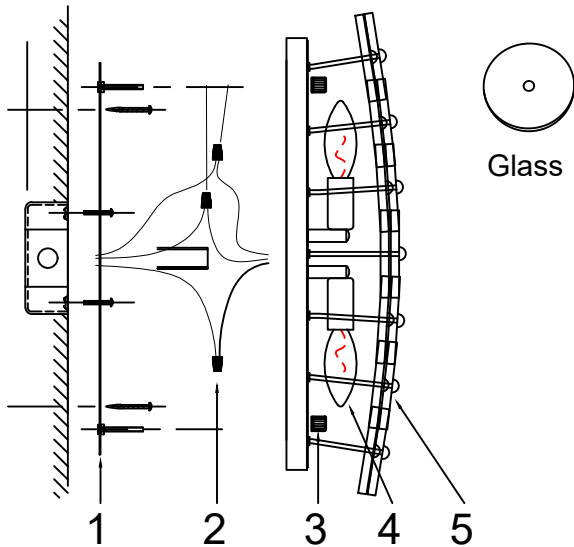
MOUNTING INSTRUCTIONS

STEP 1: Be sure power is off at the main breaker box prior to installation

STEP 2: Attach mounting plate to outlet box with the (2) 8/32"x 3/4" screws.



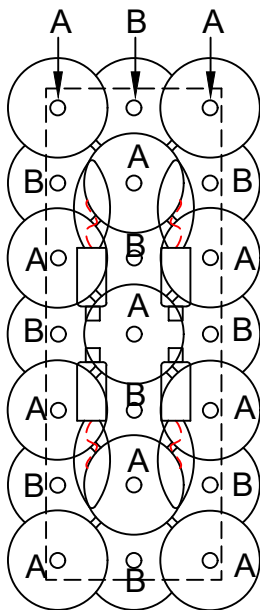
ELECTRICAL / COMPONENTS ASSEMBLY



STEP 3: Lock the square tube to the main fixture throught screws. (see accessories bag)

STEP 4: Install the E12 bulbs, don not use bulbs that exceed 40W.

STEP 5: Glass with short iron branches (B) and then glass with long iron branches (A) are loaded from both sides to the center of the glass piece. (see accessories bag)



LIGHTING MAINTENANCE:

- Regular cleaning of fixture with proper and gentle care using a soft duster, soft lint-free or damp cloth is recommended.
- Refrain from using harsh liquids that may cause chemical reaction on the hand painted finishes.
- Always refer to the Assembly Instruction before removing any components.
- **HANDLE WITH CARE.**

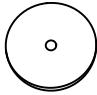


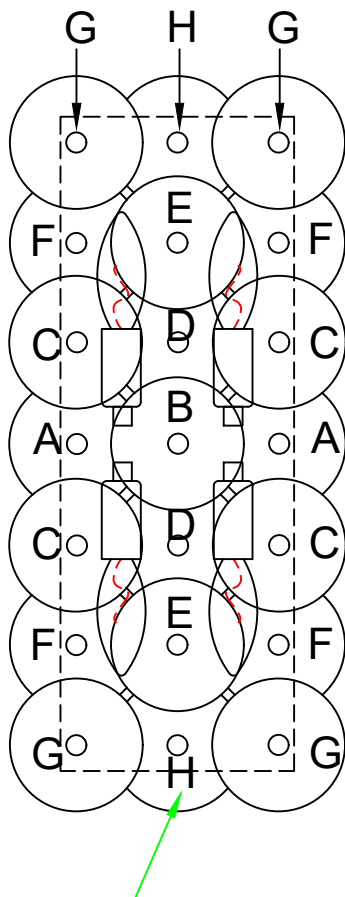
ASSEMBLY & INSTALLATION INSTRUCTIONS

MODEL: 521524PWB

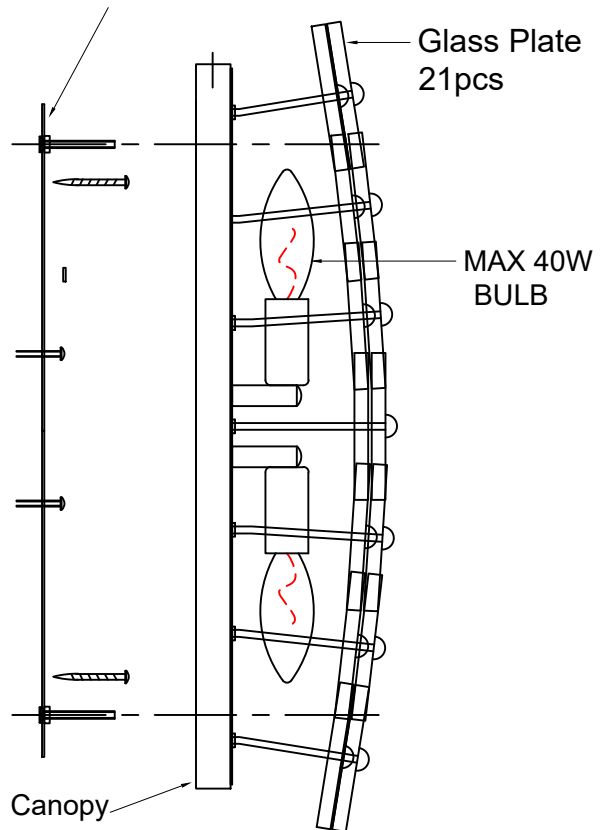
KALCO
Handcrafted Since 1980

PARTS LIST

IMAGE	PARTS NAME	QTY
	φ85x8mm Glass	21pcs



UL STANDARD MOUNTING PLATE



Metal rod A 85mm 2pcs	Metal rod E 85mm 2pcs
Metal rod B 95mm 1pcs	Metal rod F 75mm 4pcs
Metal rod C 91mm 4pcs	Metal rod G 75mm 4pcs
Metal rod D 81mm 2pcs	Metal rod H 65mm 2pcs