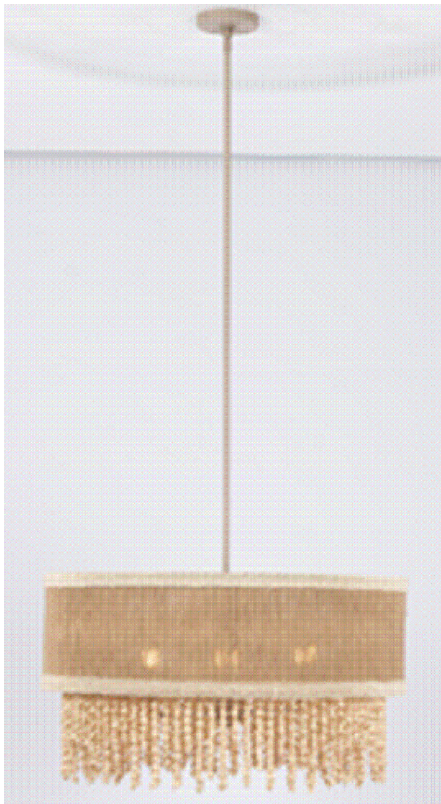




ASSEMBLY & INSTALLATION INSTRUCTIONS

MODEL: 524855JT
28 IN DIA PENDANT

I M A G E



If you have any questions or problems assembling your fixture please call us for assistance.

Customer Service: (702) 361-4345 or (800) 525-2655
customer.services@kalco.com

WARNING! TO REDUCE THE RISK OF FIRE OR INJURY PLEASE TAKE PRECAUTION AND FOLLOW THE STEPS BELOW.

1. If you are unfamiliar with electrical wiring, call a qualified electrician to install this unit. More than one person may be necessary to install fixture, make sure you have enough qualified help.
2. Turn off the power to the fixture's circuit at the service panel. Use a voltage detector to verify that the power is off.
3. DO NOT install bulb which exceeds the maximum wattage specified on the socket label.

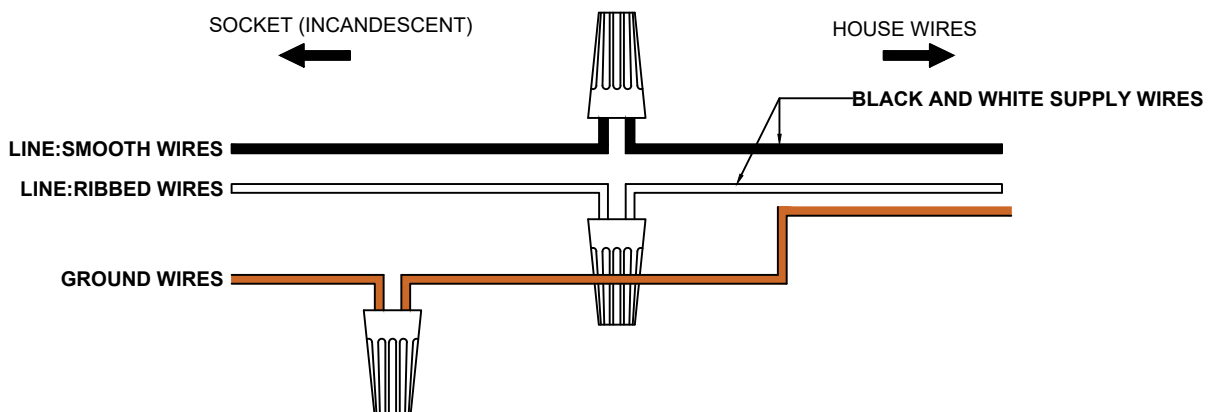
Si vous avez des questions ou des problèmes assemblage de votre dispositif s'il vous plait appel pour l'assistance.

Customer Service: (702) 361-4345 or (800) 525-2655
customer.services@kalco.com

AVERTISSEMENT! POUR RÉDUIRE LES RISQUES D'INCENDIE OU DE BLESSURES S'IL VOUS PLAÎT PRENDRE DES PRÉCAUTIONS ET SUIVEZ LES ÉTAPES CI-DESSOUS.

1. Si vous n'êtes pas familier avec le câblage électrique, appelez un électricien qualifié pour installer cet appareil. Plus d'une personne peut être nécessaire d'installer appareil, assurez vous que vous disposez de l'aide assez qualifié.
2. Coupez l'alimentation au circuit de l'appareil sur le tableau de service. Utiliser un détecteur de tension pour vérifier que l'alimentation est coupée
3. NE PAS installer l'ampoule qui excède la puissance maximale indiquée sur l'étiquette du socket.

WIRING DIAGRAM

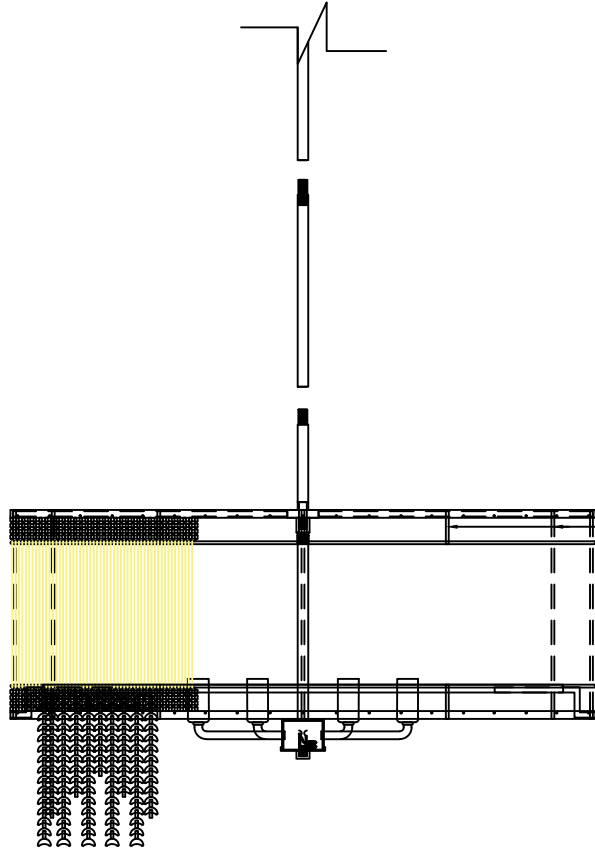




ASSEMBLY & INSTALLATION INSTRUCTIONS

MODEL: 524855JT
28 IN DIA PENDANT

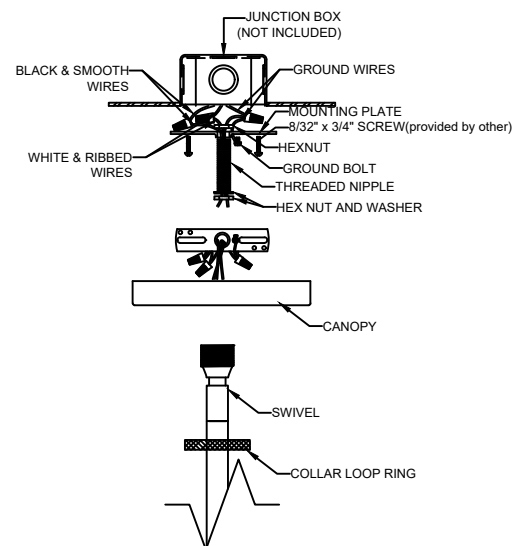
ASSEMBLY INSTRUCTION



STEP 1: Carefully pass thru the wire to the 3 Center Stem with 6", 12" and 24" of length. follow by the swivel

ELECTRICAL / MOUNTING INSTALLATION

- STEP 2:** Fasten nipple into mounting plate so that they extend away from the ceiling when the mounting plate is installed. Lock in place using the hex nut & washer provided.
- STEP 3:** Attach mounting plate to outlet box with the (2) 8-32 x 3/4" screws (provided by other).
- STEP 3:** Determine fixture height. attached the canopy follow by the swivel.
- STEP 4:** Secure the swivel and canopy using the collar loop ring.

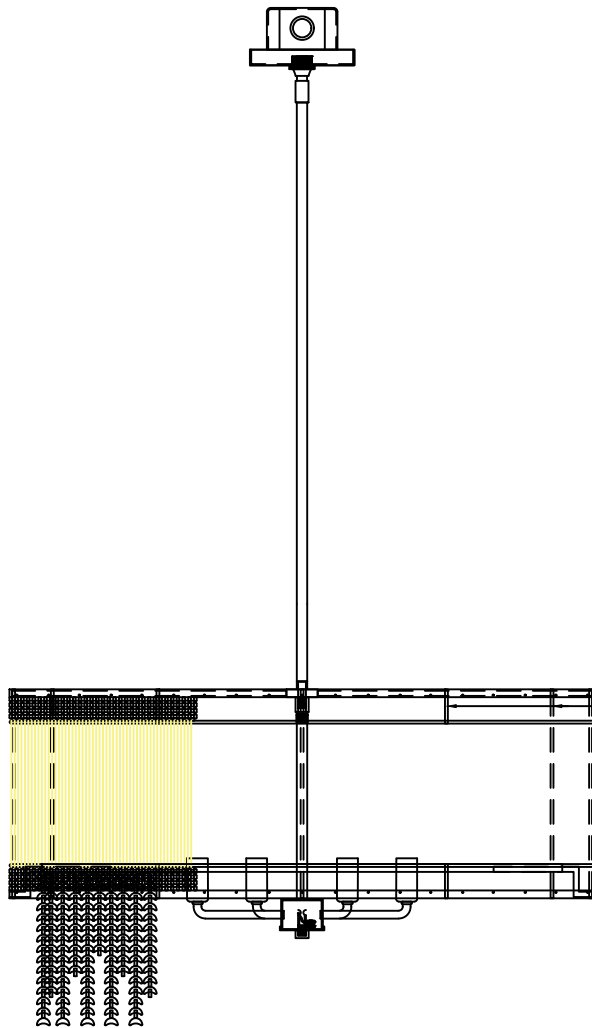




ASSEMBLY & INSTALLATION INSTRUCTIONS

MODEL: TW1643-28D
28 IN DIA PENDANT

COMPONENTS ASSEMBLY



STEP 5: Install bulb, do not use bulbs that exceeds 40W.

LIGHTING MAINTENANCE:

- Regular cleaning of fixture with proper and gentle care using a soft duster, soft lint-free or damp cloth is recommended.
- Refrain from using harsh cleaning liquids that may cause chemical reaction on the hand painted finishes.
- Always refer to the Assembly Instruction before removing any components.
- **HANDLE WITH CARE.**



ASSEMBLY & INSTALLATION INSTRUCTIONS

MODEL: 524855JT
28 IN DIA PENDANT

PARTS LIST

IMAGE	PARTS NAME	QTY
	Mounting Plate	1 PC
	Threaded Nipple	1 PC
	Star Washer	1 PC
	Hex Nut	2 PCS
	Center Stem 6 Inch, 12 Inch and 24 Inch Length	1 SET
	Canopy	1 PC
	Swivel	1 PC