



## WARNING

DISCONNECT POWER BEFORE RELAMPING OR WIRING THE FIXTURE  
READ ALL INSTRUCTIONS COMPLETELY BEFORE STARTING INSTALLATION.



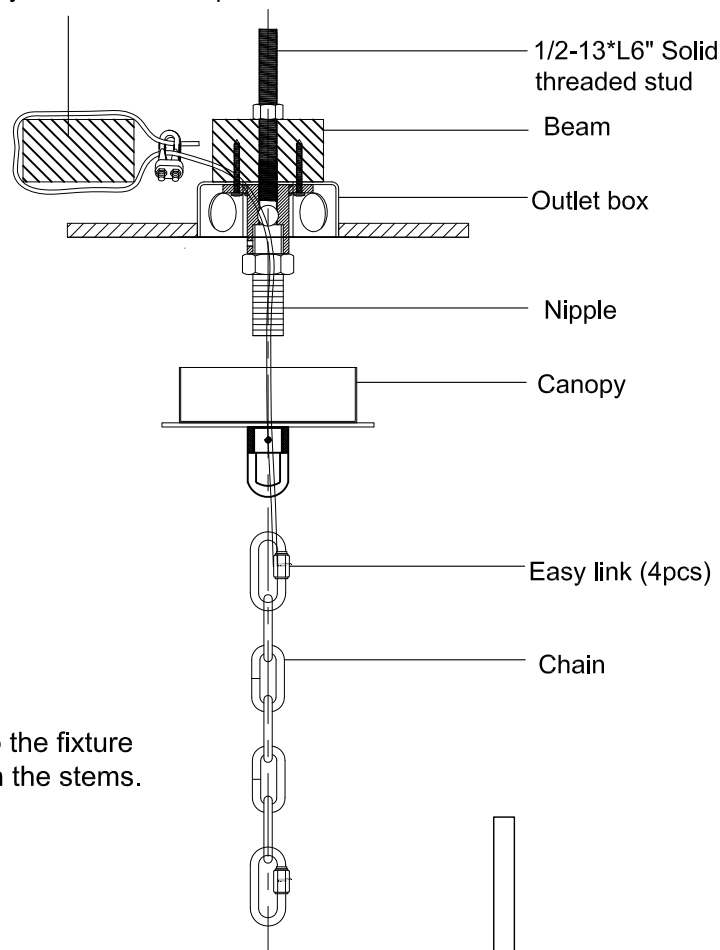
## CAUTION

- TO AVOID THE RISK OF FIRE OR SHOCK, FIXTURE MUST BE INSTALLED IN COMPLIANCE WITH ALL APPLICABLE NATIONAL AND LOCAL ELECTRICAL/BUILDING CODES.
- INSTALLATION AND MAINTENANCE OF THIS UNIT REQUIRES AN ELECTRICIAN OR CERTIFIED FACTORY TRAINED TECHNICIAN.
- If an existing fixture is being replaced, remove it and note to which of the wires in the outlet box the fixture was attached. DO NOT SEPARATE ANY OTHER WIRES THAT MAY BE IN THE BOX. DO NOT DAMAGE THE INSULATION OF OLDER WIRING. In regular circumstances the BLACK wire will be the "Hot" lead and the WHITE wire will be the "Neutral" or "Common" lead. A GREEN or BARE COPPER wire is the "Ground". In older buildings it is always good practice to reconfirm the polarity of the wiring.

## NOTICE

- The important safeguards and instructions outlined on this sheet cannot cover all possible conditions and situations that may occur. It must be understood that common sense, caution and care factors that cannot be built into any product. Caution and care must be supplied by the person(s) installing, operating and caring of this lighting fixture
- This fixture is design to be mounted on a correctly installed standard round or octagon box or a through wiring box with a plaster frame. The box must be securely mounted to the structure of the building. The crossbar and hardware supplied should be used. Directly mounting the fixture to the outlet box may make it impossible to correctly align the fixture.

Safety cable fixed to separate beam



### FIXTURE PREPARATION

1. Remove the fixture, shades, crystals and parts bag(s) from the carton.

#### NOTICE:

Before discarding the carton, double check to make certain that all parts are found.

2. Determine the overall desired length of the fixture. Assemble the stems one at a time onto the fixture leads. Tape the ends of the leads to a stiff wire (coat hanger) to aid in pulling them through the stems.

#### NOTICE:

Place the canopy onto the stem BEFORE assembling the top stem section and swivel

### FIXTURE INSTALLATION

1. Thread the screws into the mounting ring at the spacing that matches the holes in the canopy. Attach the mounting ring to the outlet box. (The green screw should face the floor). Adjust the studs so they extend 3/16" beyond the canopy. Attach the safety cable to the structure building or brace. See figure-1.

#### NOTICE:

If used on a sloped ceiling, loosen the mounting screws 1/4 turn to allow the mounting ring to move

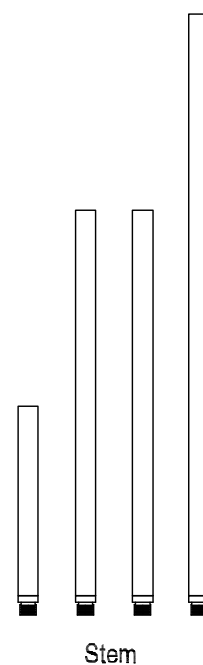
#### NOTICE:

THIS LUMINAIRE MUST BE MOUNTED OR SUPPORTED INDEPENDENTLY OF AN OUTLET BOX.



## WARNING

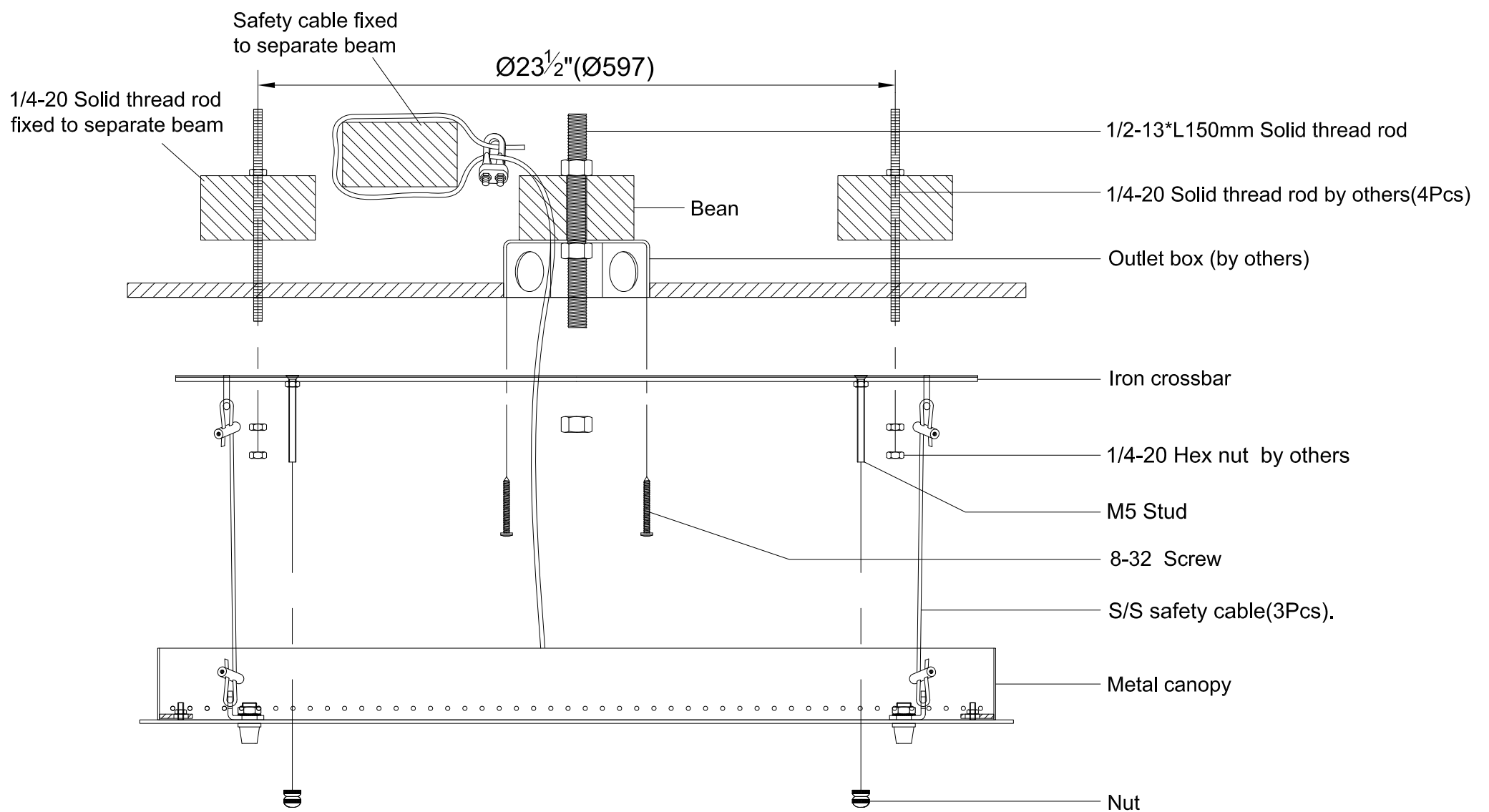
REFER TO THE ILLUSTRATION FOR CORRECT AND SAFE INSTALLATION OF SAFETY CABLE. FAILURE TO FOLLOW THIS INSTRUCTION COULD RESULT HARM/DAMAGE TO THE FIXTURE, PROPERTY AND/OR PERSON(S)!



If you have any questions or problems assembling your fixture please call us for assistance. Customer Service:(702)361-4345 or (800)525-2655, customer.services@kalco.com

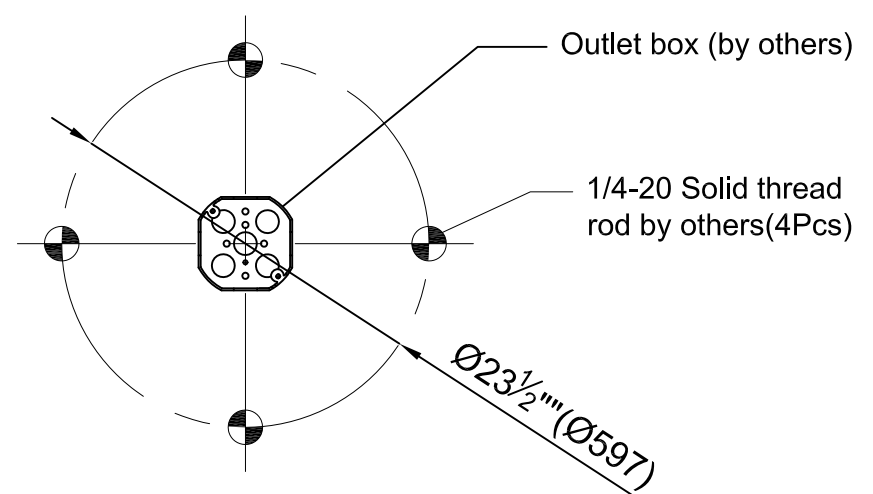
**WARNING - TO REDUCE THE RISK OF FIRE OR INJURY:**

- 1.If you are unfamiliar with electrical wiring, call a qualified electrician to install this unit. More than one person may be necessary to install fixture, make sure you have enough qualified help.
- 2.Turn off the power to the fixture's circuit at the service panel. Use a voltage detector to verify that the power is off.
- 3.DO NOT install bulb which exceeds the maximum wattage specified on the socket label.
- 4.This product must be installed in accordance with the applicable installation code by a person familiar with the construction and operation of the product and the hazards involved.



**Note: Please adjust the color temperature of tape light before installing canopy!**

1/4-20 Solid Thread rod distribution view

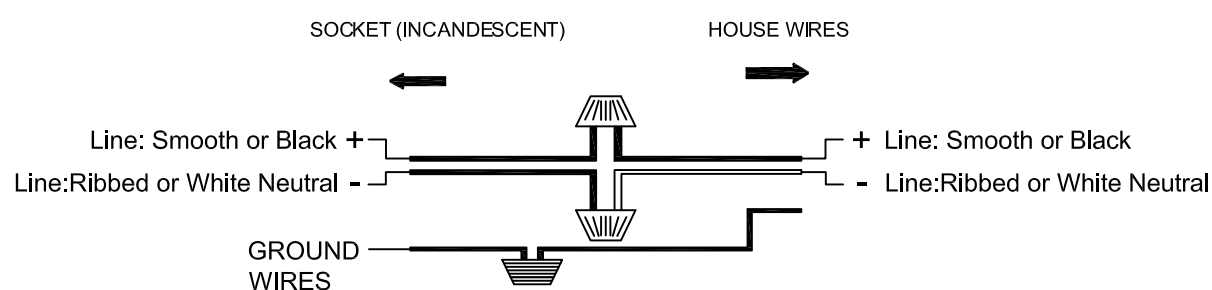


## INSTALL CANOPY AS FOLLOWS

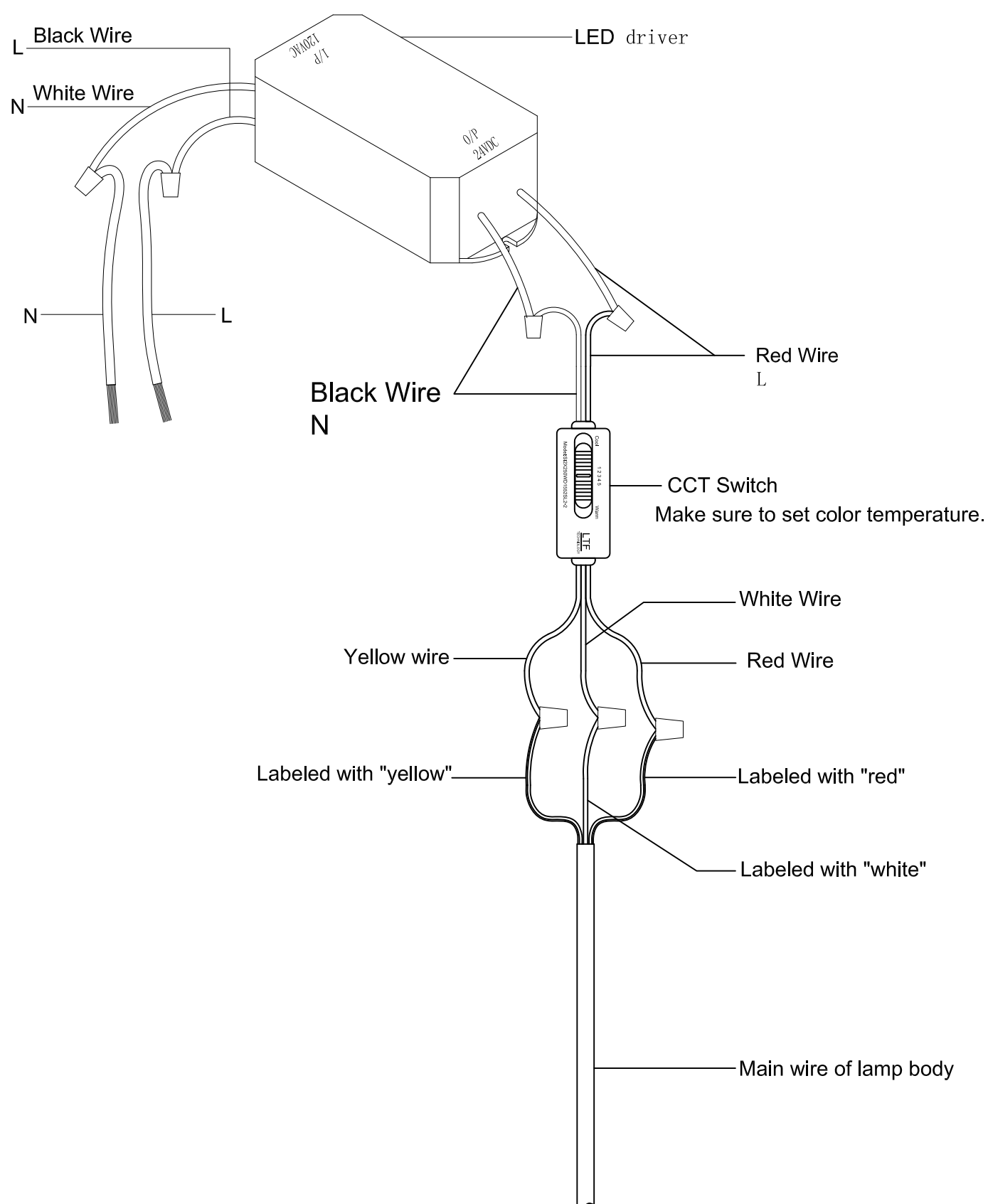
**CAUTION:** Be sure power is off at the main breaker box prior to installation.

- 1.Use 1/4-20 Solid thread rod and 1/2-13 Solid thread rod to fix mounting block on j-box.
- 2.Use part nut to fix part metal canopy onto part M5 Stud .

## Wiring Diagram

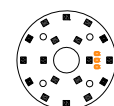
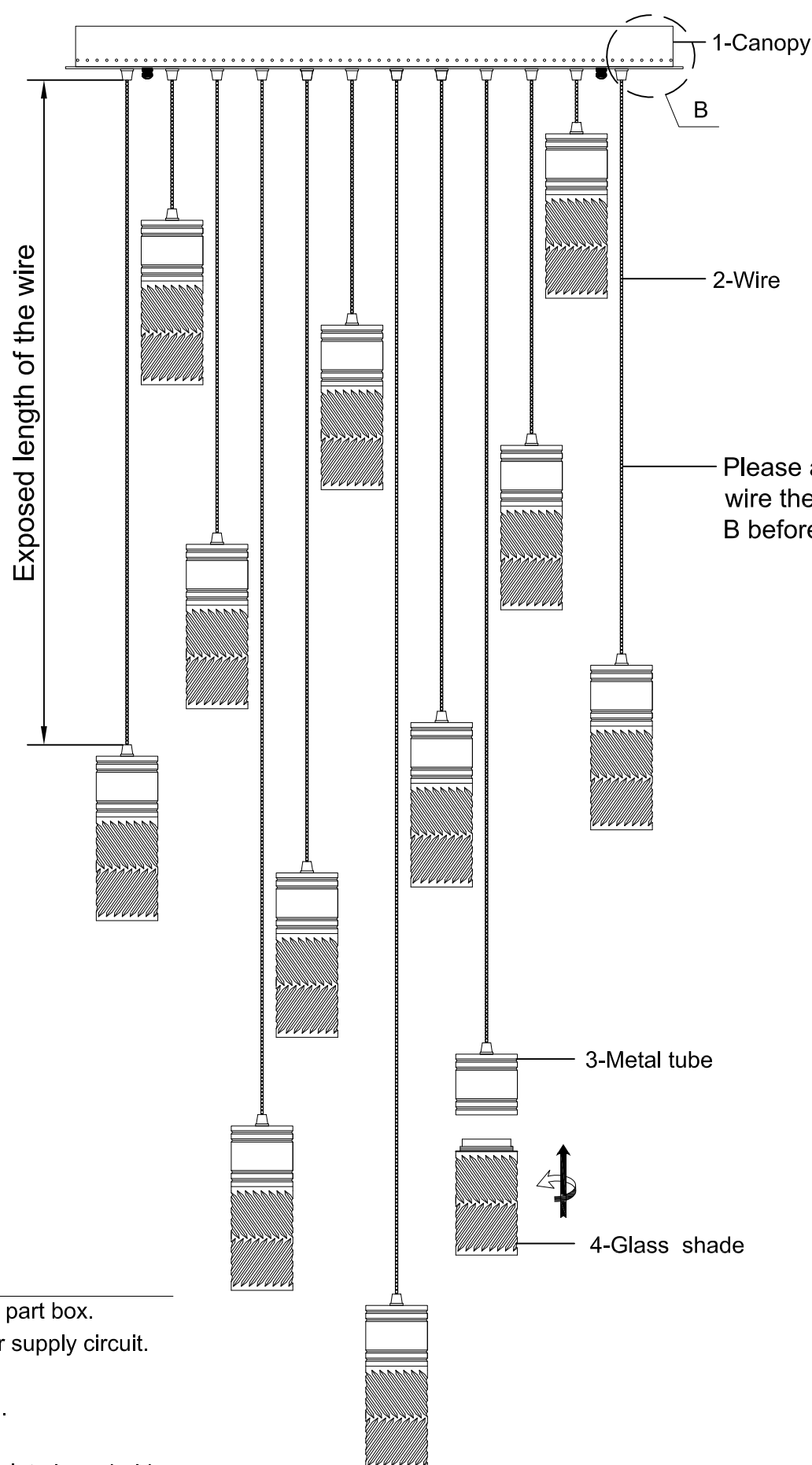
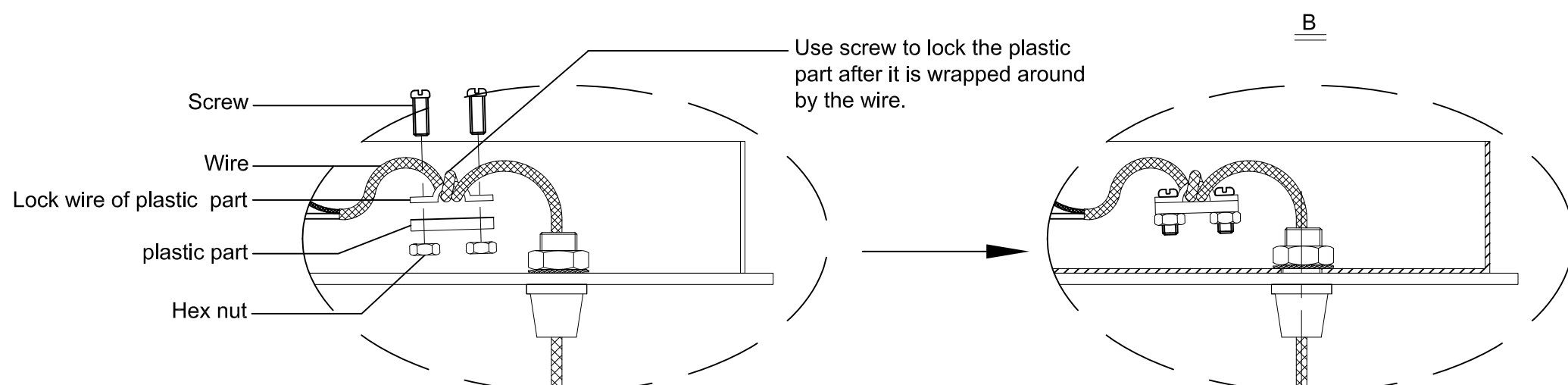


## Wire connecting view



Note: Please adjust the color temperature of tape light before installing canopy!

SWITCH POSITIONS				
1	2	3	4	5
RP CCT 1	RP CCT 2	RP CCT 3	RP CCT 4	RP CCT 5
4000K	3500K	3000K	2900K	2700K



You will need 12 - 24V/LED panel  
6 Watts Recommended  
6 Watts Max  
Bulb not included



**WARNING**

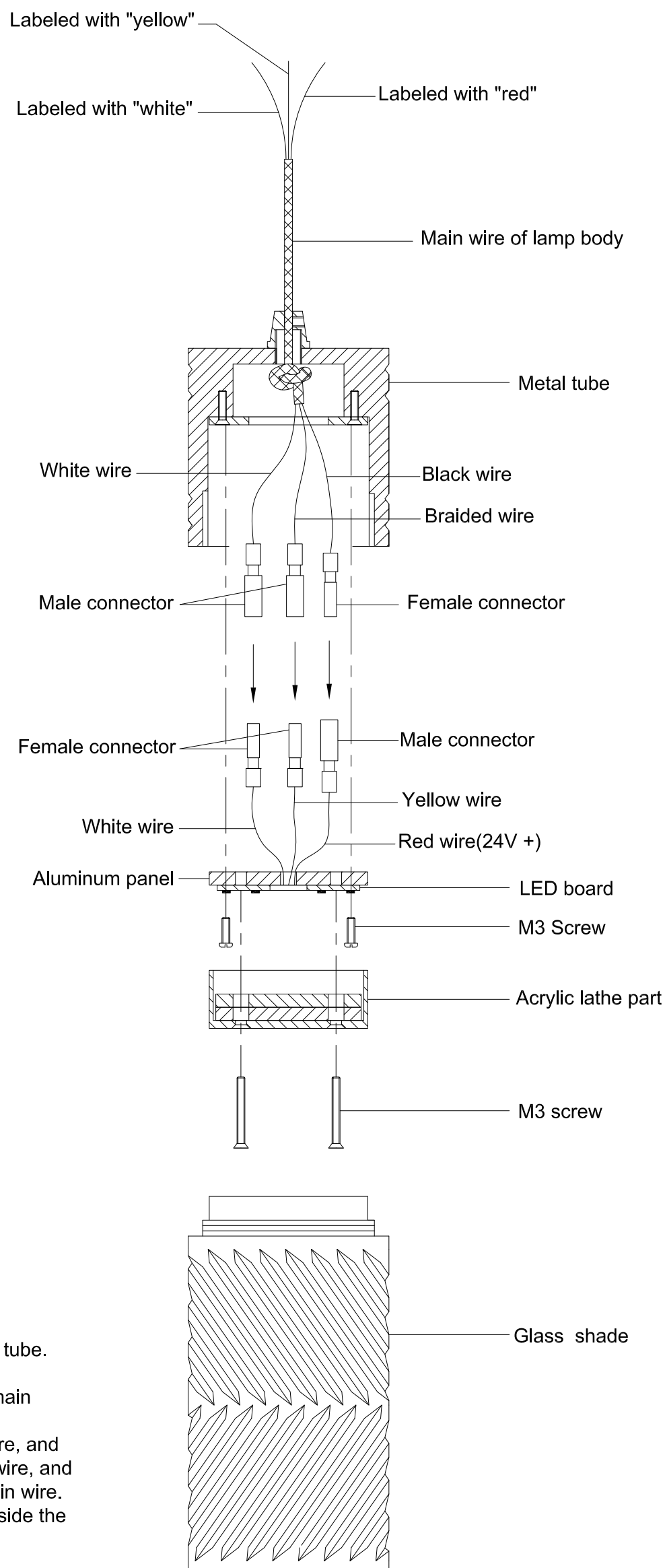
Electrical Danger Turn Power Off

All electrical components must be installed by a licensed electrician in accordance with the National Electric code and the appropriate local electrical codes.



## INSTALLATION

- Turn off electricity, take all parts from part box.
- Connect the main wire with the power supply circuit.  
See wire connection diagram.
- Fix part #3 to part #1 by using part #2.
- Screw part #4 to part #3.
- Check the installation and attach bulb into lamp holder.



## Steps for replacing LED boards

- Remove glass shade.
- Remove M3 grub screw, then remove acrylic lathe part.
- Remove M3 grub screw, then remove LED board from metal tube.
- Unplug quick connector.
- Use quick connector to connect new LED board with fixture main wire as shown on diagram.
- Connect LED board red wire with black wire of fixture main wire, and connect LED board white wire with white wire of fixture main wire, and connect LED board yellow wire with braided wire of fixture main wire.
- Connect all wires, then tuck all wires and quick connectors inside the metal tube.
- Use M3 grub screw to lock LED board inside the metal tube.
- Use M3 grub screw to lock acrylic lathe part on the aluminum panel.
- Rotate the glass shade on the metal tube.