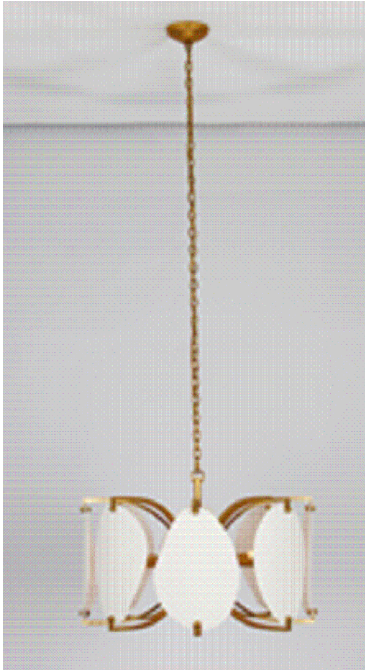




# ASSEMBLY & INSTALLATION INSTRUCTIONS

MODEL: 525456OL  
28 DIAMETER PENDANT

## I M A G E



If you have any questions or problems assembling your fixture please call us for assistance.

Customer Service: (702) 361-4345 or (800) 525-2655  
[customer.services@kalco.com](mailto:customer.services@kalco.com)

**WARNING!** TO REDUCE THE RISK OF FIRE OR INJURY PLEASE TAKE PRECAUTION AND FOLLOW THE STEPS BELOW.

1. If you are unfamiliar with electrical wiring, call a qualified electrician to install this unit. More than one person may be necessary to install fixture, make sure you have enough qualified help.
2. Turn off the power to the fixture's circuit at the service panel. Use a voltage detector to verify that the power is off.
3. DO NOT install bulb which exceeds the maximum wattage specified on the socket label.

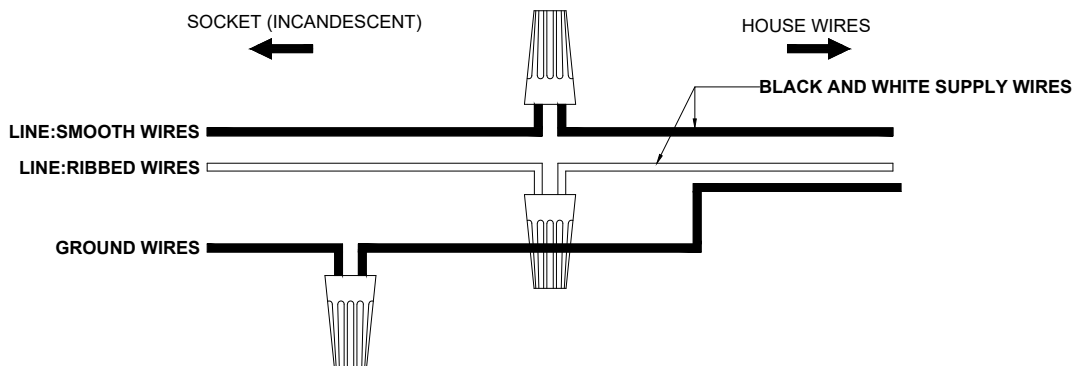
Si vous avez des questions ou des problèmes assemblage de votre dispositif s'il vous plait appel pour l'assistance.

Customer Service: (702) 361-4345 or (800) 525-2655  
[customer.services@kalco.com](mailto:customer.services@kalco.com)

**AVERTISSEMENT!** POUR RÉDUIRE LES RISQUES D'INCENDIE OU DE BLESSURES S'IL VOUS PLAÎT PRENDRE DES PRÉCAUTIONS ET SUIVEZ LES ÉTAPES CI-DESSOUS.

1. Si vous n'êtes pas familier avec le câblage électrique, appelez un électricien qualifié pour installer cet appareil. Plus d'une personne peut être nécessaire d'installer appareil, assurez vous que vous disposez de l'aide assez qualifié.
2. Coupez l'alimentation au circuit de l'appareil sur le tableau de service. Utiliser un détecteur de tension pour vérifier que l'alimentation est coupée
3. NE PAS installer l'ampoule qui excède la puissance maximale indiquée sur l'étiquette du socket.

## WIRING DIAGRAM

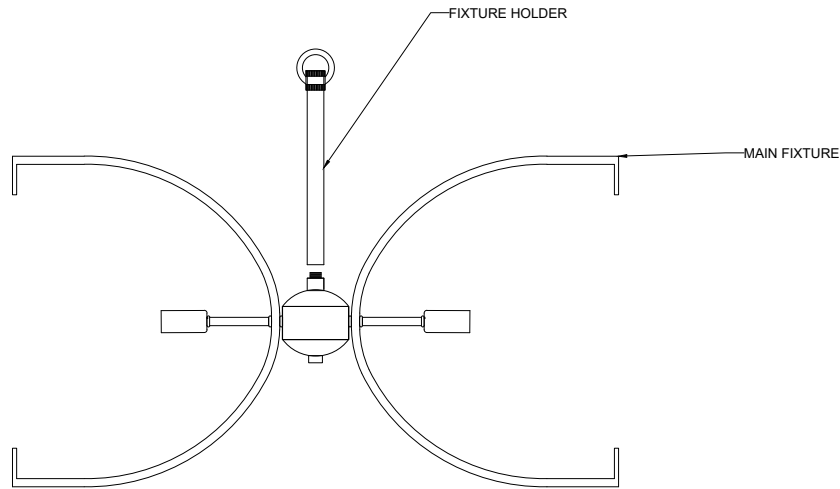




# ASSEMBLY & INSTALLATION INSTRUCTIONS

MODEL: 525456OL  
28 DIAMETER PENDANT

## KNOCKDOWN ASSEMBLY



**STEP 1:** Carefully attached the Fixture holder to the main Fixture.

## ELECTRICAL / MOUNTING INSTALLATION

**STEP 2:** Attach mounting plate to outlet box with the (2) 8/32"x 3/4" screws(provided by other). Fasten Nipple into mounting plate so that they extend away from the ceiling when the mounting plate is installed. Lock in place using the hex nut and washer provided.

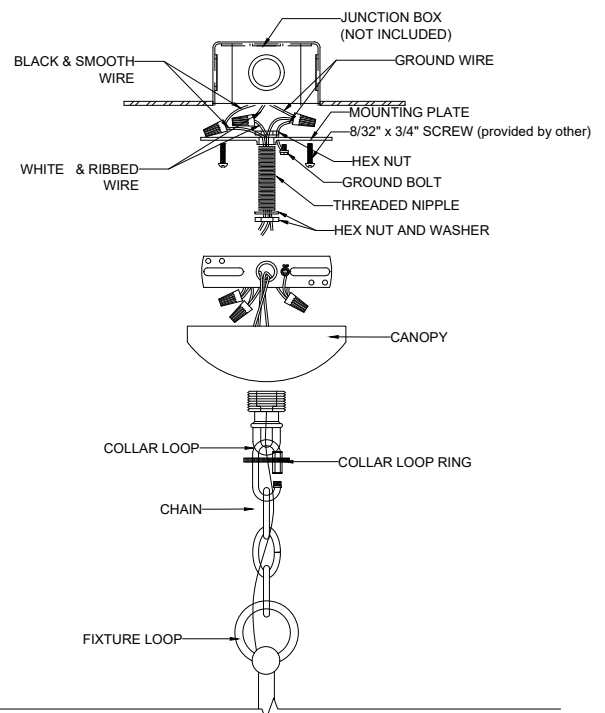
**STEP 3:** Determine fixture height. Make adjustment if needed. Attach chain to the fixture loop and collar loop using open-able chain..

**STEP 4:** Lace wires through the chain links (every other link).

**STEP 5:** Refer to wiring diagram. With wire carefully threaded thru canopy, connect the black supply wire to the smooth fixture wire with wire connector, connect the white supply wire to the ribbed fixture wire with wire connector. Connect ground wire from fixture with supply ground wire.

**STEP 6:** Carefully tuck all wires into outlet box ensuring that there are no wires pinched between the canopy and ceiling.

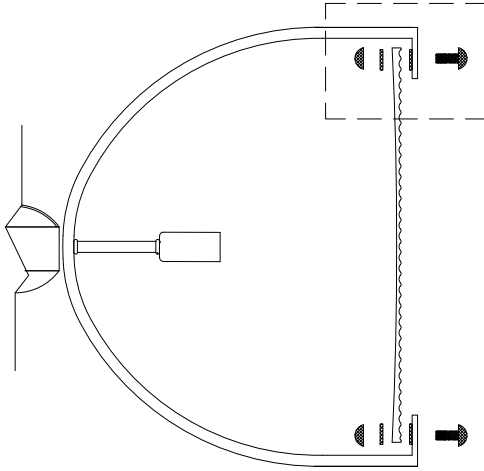
**STEP 7:** Lock in place using the collar loop ring provided.



# ASSEMBLY & INSTALLATION INSTRUCTIONS

**MODEL: 525456OL**  
**28 DIAMETER PENDANT**

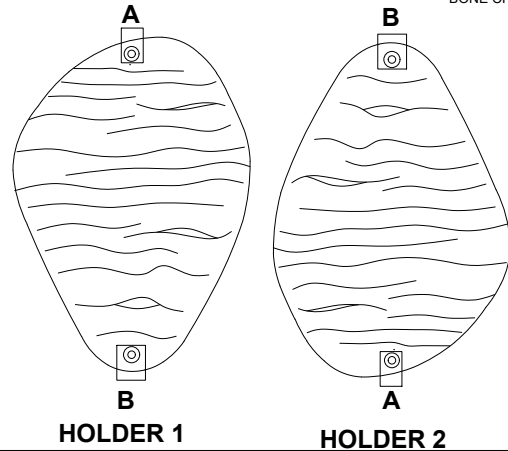
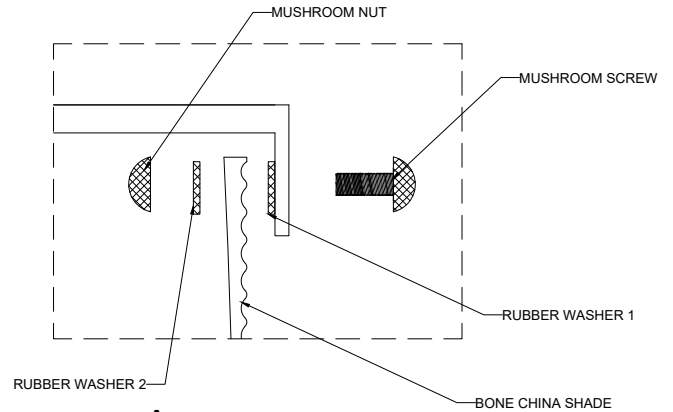
## COMPONENT ASSEMBLY



**STEP 8:** Attached the White Bone China to the Bone China holder. Secure it using the mushroom screw.

**STEP 9:** When attaching the white bone china on the holder, kindly rotate the White Bone China every holder.

**Reminder:** Do not forget to attached the two (2) rubber washer in-between the Bone China to protect from scratch.



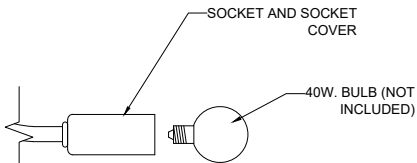
## WHITE BONE CHINA MAINTENANCE:

**WARNING!!:** To ensure the safety on electric shock please make sure to unplug or not connected the fixture to the outlet.

- When cleaning the Bone China please use a soap and water.  
Note: Refrain from using harsh cleaning liquids that may cause a chemical reaction to the white bone china
- Always refer to the Assembly Instruction before removing any components.
- HANDLE WITH CARE.

## ELECTRICAL / MOUNTING INSTALLATION

**STEP 9:** Insert candle cover to the socket and install bulb, do not use bulbs that exceed 40 Watts.



### FOR LIGHTING MAINTENANCE:

- Regular cleaning of fixture with proper and gentle care using a soft duster, soft lint-free or damp cloth is recommended.
- Refrain from using harsh cleaning liquids that may cause chemical reaction on the hand painted finishes.
- Always refer to the Assembly Instruction before removing any components.
- HANDLE WITH CARE.

# ASSEMBLY & INSTALLATION INSTRUCTIONS

**MODEL: 525456OL**  
**28 DIAMETER PENDANT**

## PARTS LIST

IMAGE	PARTS NAME	QTY
	Mounting Plate	1 PC
	Threaded Nipple	1 PC
	Star Washer	1 PC
	Hex Nut	2 PCS
	Openable Chain Link	2 PCS
	Chain 4ft.	1 PC
	Canopy	1 PC
	White Bone China	8 PCS
	Cotton gloves	1 PAIR
	Fixture Holder	1 PC