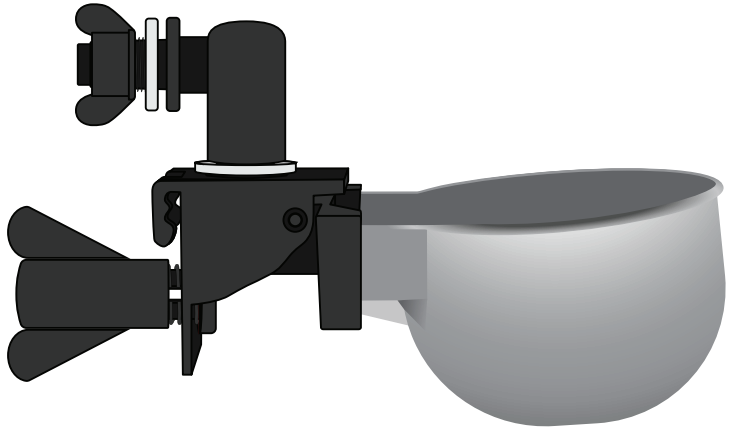


USER MANUAL

Metal Auto-Fill Cup

for Small Animals



DIY
series

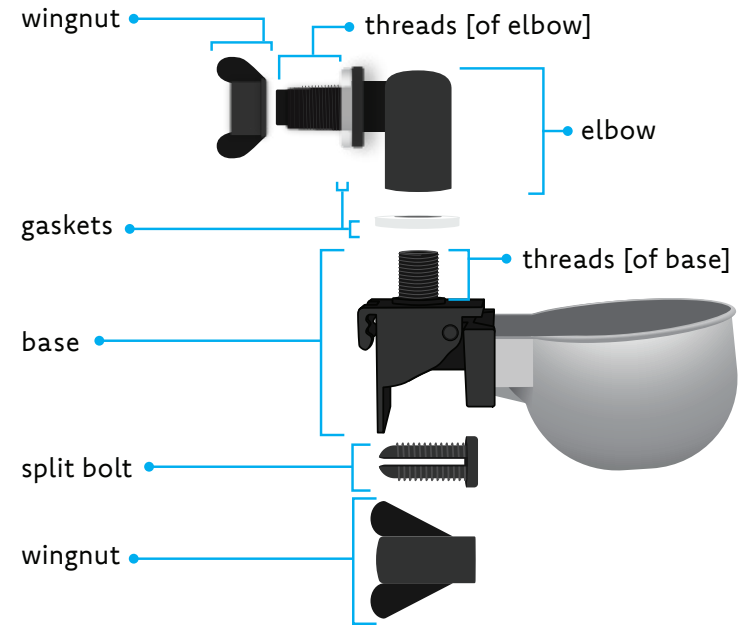
Compatible with RentACoop®
Sip Station and S.N.A.P. series

WH-MTCP-CLP2
WH-MTCP-CLP6
February 2025

TABLE OF CONTENTS

DIAGRAM OF METAL CUP PARTS	3
THINGS TO CONSIDER BEFORE INSTALLATION	4
HOW TO INSTALL DIRECTLY ONTO ANY CONTAINER	6
BRIEF OVERVIEW OF WATERING SYSTEMS	8
INSTALLING ON 1/2" HARDWARE CLOTH WITH TUBING	10
INSTALLING ON OTHER CAGE-WIRE WITH TUBING	12
HOW TO CLEAN THE METAL AUTO-FILL CUP	14
CONTACT INFORMATION	BACK COVER

DIAGRAM OF METAL CUP PARTS

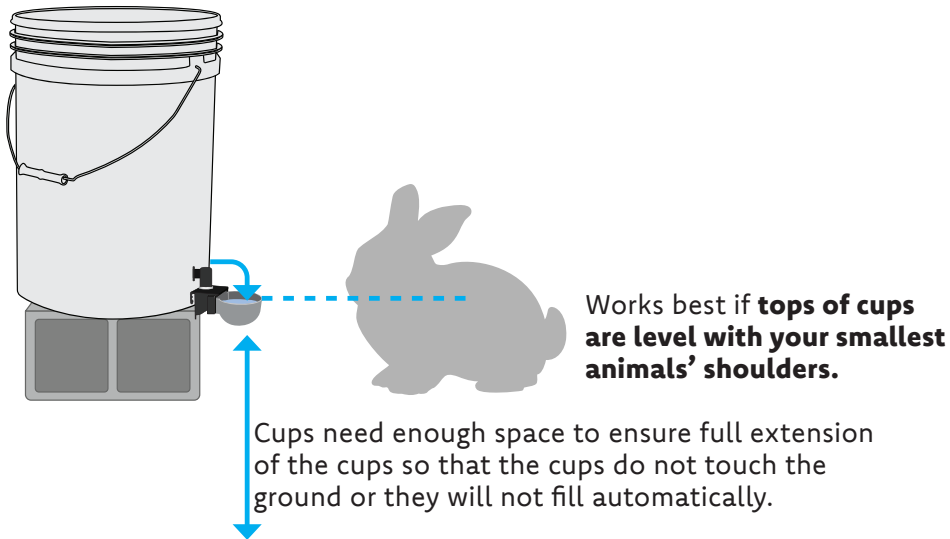


THINGS TO CONSIDER BEFORE INSTALLATION

1. Training Tip

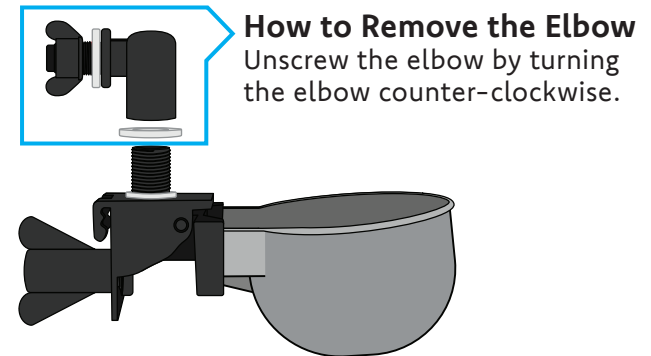
Remove the old water source before introducing a new watering system!

2. Correct Placement of Watering System

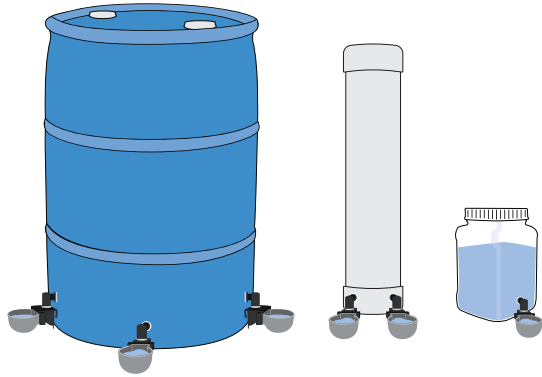


3. Using the Elbow is OPTIONAL

Depending on your watering system setup, the elbow may not be needed (see page 10).



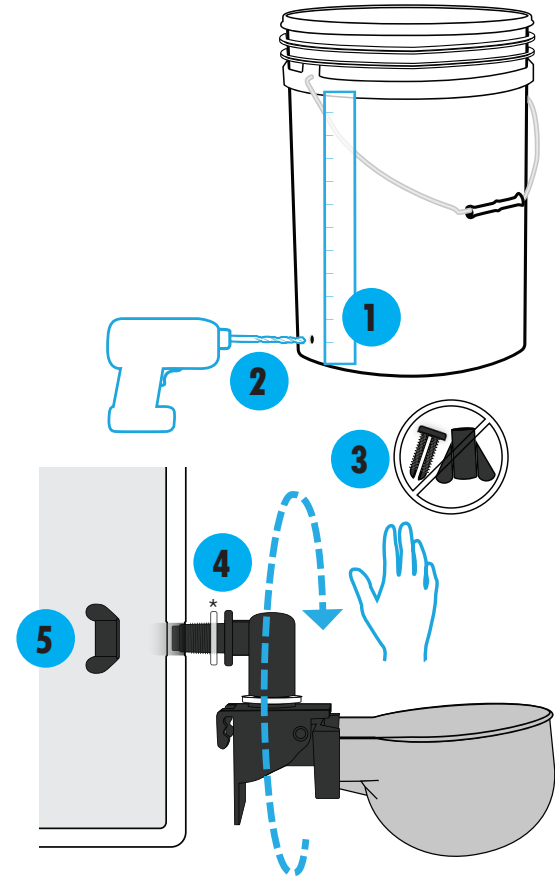
HOW TO INSTALL DIRECTLY ONTO ANY CONTAINER



INSTALLATION

See Diagram on page 5 for more details.

1. Measure and mark 1" from the bottom of your container.
2. Create the hole(s) using a 3/8" drill bit (not provided).
3. Remove split bolt and wingnut from the base. They are not needed.
4. Manually screw the Auto-fill Cup (with the gasket attached) into the drilled hole and turn clockwise by the elbow until tight.*
5. Attach the wingnut to the exposed threads of the elbow on the inside of the container.



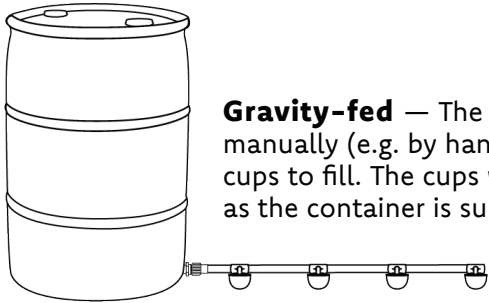
*Gasket stays on the outside of the container.

BRIEF OVERVIEW OF WATERING SYSTEMS

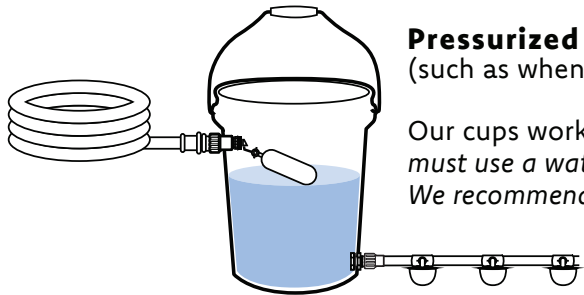
DIY Auto-fill Cups need to be connected to a watering system* in order to *continuously* supply your cups with water.

There are two types of watering systems:

1. Gravity-Fed
2. Pressurized



Gravity-fed — The water reservoir is filled manually (e.g. by hand) and gravity allows the cups to fill. The cups will continue to fill as long as the container is supplied with water.



Pressurized — There is a continuous flow of water (such as when leaving the garden hose on).

Our cups work best at 3 PSI or less; therefore, you must use a water **pressure regulator** or a **float valve**. We recommend RentACoop® S.N.A.P. Float Valve!

Create a custom watering system that's perfect for your unique setup with RentACoop's Sip Station Starter Kit, Mini Kit, and accessories!

This system, using 5/16" ID tubing, tubing T's , and cage adaptors, is easy to assemble and customize.

OR

Create a custom PVC waterer that's perfect for your unique setup with RentACoop's Secure-Non-Adhesive PVC [S.N.A.P.] DIY Float Valve and other S.N.A.P. accessories!

This glueless system is quick and easy to assemble. No more guesswork, no more mess whether you're a beginner or experienced DIY-er!

Sold Separately.

*EQUIPMENT AND SIZE OF ADAPTERS AND FITTINGS MAY VARY SYSTEM TO SYSTEM. THIS OVERVIEW IS ONLY MEANT TO BE USED AS A ROUGH GUIDE TO GIVE YOU THE BASICS OF A WATERING SYSTEM. CONSULT YOUR LOCAL HARDWARE STORE FOR PVC CEMENT, PVC SCHEDULE 40 PIPING, CORRECT SIZING OF FITTINGS, COUPLINGS, ADAPTERS, TUBING, ETC.

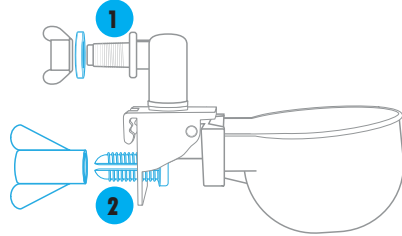
INSTALLING ON 1/2" HARDWARE CLOTH WITH TUBING

Option 1 with Elbow Attached

LEAVE ELBOW ATTACHED WHEN USING WITH ANIMALS THAT CHEW TUBING. THIS LIMITS ACCESS TO EXPOSED TUBING.

1. Remove the **gasket** from the threads of the elbow.
2. Insert the **split bolt** through the hole in the **base**.

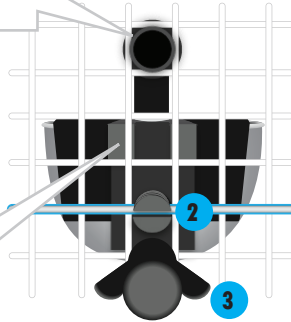
Place the **base** and **split bolt** onto a **horizontally positioned wire** so that the cage wire sits **between** the **split bolt**.



The **elbow threads** should be poking through the opening in the hardware cloth.

3. Twist the **wingnut** onto the **split bolt** and tighten by turning clockwise to secure the cup on the cage wire.

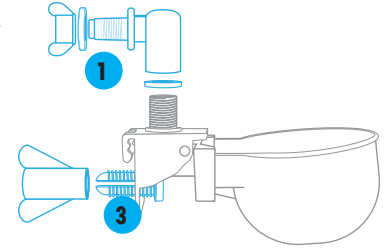
NOTE: When using the elbow with 1/2" hardware cloth, the **clips** on the **base** are not used. **This does not effect the structural integrity of the cups.**



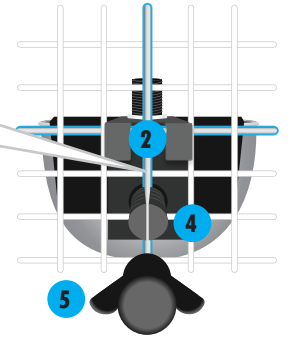
4. Cut 5/16" ID tubing to desired length.
5. Connect one end of the tubing to the **elbow threads** and the other end to a watering system.

Option 2 without Elbow

1. Remove the entire **elbow** and **gasket** from the **base**.
2. Mount the **clips** of the **base** on a **horizontally positioned wire**.
3. Insert the **split bolt** through the hole in the **base**.



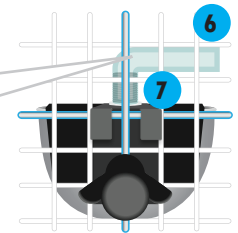
4. Place the **base** and **split bolt** onto a **vertically positioned wire** so that the cage wire is **between** the **split bolt**.



5. Tighten the **wingnut** onto the **split bolt**.

6. Cut 5/16" ID tubing to desired length.

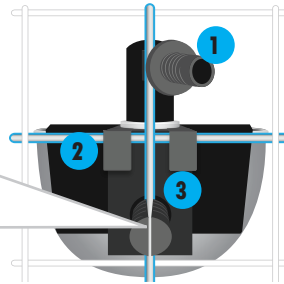
7. Connect one end of the tubing to the **base threads** and the other end to a watering system.



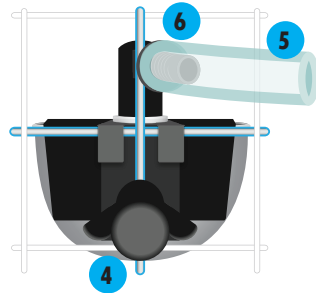
INSTALLING ON OTHER CAGE-WIRE WITH TUBING

Option 3 with Elbow Attached

1. Remove **gasket** from **elbow threads**.
2. Mount the clips onto **horizontally positioned wire**.
3. Insert the **split bolt** through the **base** and continue to place the **split bolt** onto **vertically positioned wire** so that the cage wire is between the **split bolt**.
4. Twist the **wingnut** onto the **split bolt** and tighten by turning clockwise to secure the cup on the cage wire.

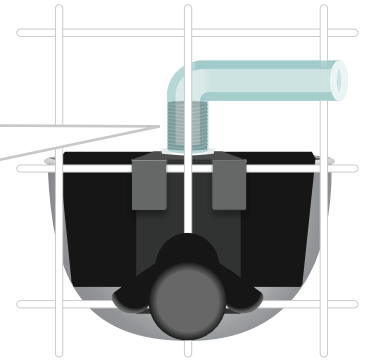


5. Cut 5/16" ID tubing to desired length.
6. Connect one end of the tubing to the **elbow threads** and the other end to a watering system.



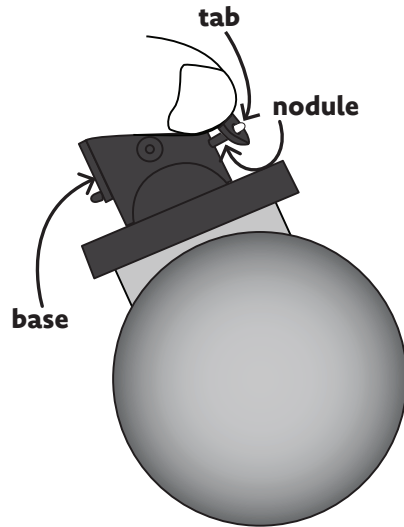
Option 4 without Elbow

1. Remove entire **elbow** and **gasket** from **base**.
2. Follow Steps 2 through 4 from Option 3.
3. Connect one end of 5/16" ID tubing to the exposed **threads** on the **base** and then connect the other end of tubing to your watering system.

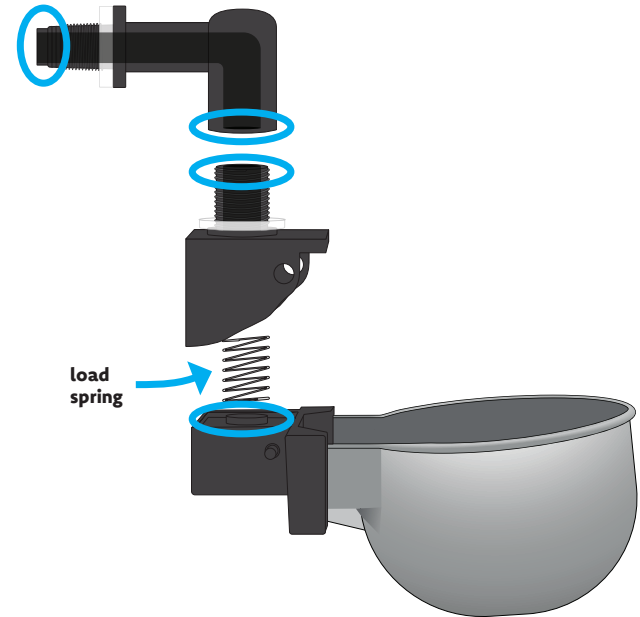


HOW TO CLEAN THE METAL AUTO-FILL CUP

1. Clean and wipe any dirt or debris from the cup.
2. Pry one side of the tabs on the base to release the small plastic nodule out of its tab. Be careful not to break the nodule off.
3. There is a load-spring so make sure to take the base off slowly. Once you release the first nodule, the second tab will come off easy.



4. Check that all **water spouts** are clean of debris. You can use a toothpick if clogged.





RentACoop®

QUESTIONS?

CONTACT OUR
EGG - S P E R T S

info@rentacoop.com

1 800-642-3571

M-F 9-5 EST



@rentacoop
#rentacoop