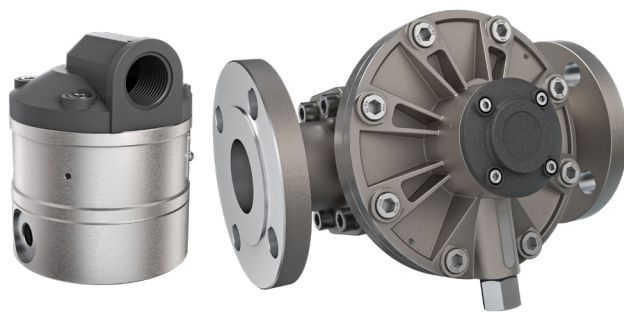


OM SERIES INTERMEDIATE PRESSURE



SPECIFICATIONS

Oval Gear	Nominal Size	Flow Range*
OM004	⅛" (4 mm)	0.26-9.5 GPH (1-36 L/hr)
OM006	¼" (6 mm)	0.5-27 GPH (2-100 L/hr)
OM008	⅜" (8 mm)	4-145 GPH (15-550 L/hr)
OM004-OM008 Accuracy +@3cp:	± 1% (± 0.2% with optional RT14 with non-linearity correction)	
OM015	½" (15 mm)	0.26-10.6 GPM (1-40 L/min)
OM025	1" (25 mm)	2.6-40 GPM (10-150 L/min)
OM040	1½" (40 mm)	4-66 GPM (15-250 L/min)
OM050	2" (50 mm)	8-120 GPM (30-450 L/min)
OM080	3" (80 mm)	10-200 GPM (35-750 L/min)
OM080E	3" (80 mm)	13-260 GPM (50-1000 L/min)
OM100	4" (100 mm)	20-400 GPM (75-1500 L/min)
OM015-OM100 Accuracy +@3cp:	± 0.5% (± 0.2% with optional RT14 with non-linearity correction)	
Repeatability:	Typically ± 0.03% of reading	
Temperature Rating:	-40°F to +300°F (-40°C to +150°C) refers to factory for lower temperature	
Intermediate Pressure Rating (Threaded Flow Meter)		
Aluminum:	2000 PSI (138 Bar)	OM025
316 Stainless Steel:	1450 PSI (100 Bar)	OM004
		OM006
		OM008
		OM015
		OM025
	725 PSI (50 Bar)	OM040
		OM050

*Maximum flow reduces as viscosity increases, see flow de-rating guide.
Max recommended Pressure drop is 14.5 psi (1 bar).

FLOMEC® OM Intermediate Pressure Flow Meters provide highly accurate and repeatable volumetric measurement of clean viscous liquids in higher pressure installations. Suitable for applications including metering lubricants, chemicals, grease, additives, and other high viscosity fluids.

FEATURES / BENEFITS

- High accuracy and repeatability, direct volumetric reading
- No requirement for flow conditioning (straight pipe runs)
- Measures both high and low viscosity liquids
- Optional Exd I/IIB approval (ATEX, IECEx)

INDUSTRIES

- Aviation
- Mining
- Power
- Chemical
- Pharmaceutical
- Food
- Paint
- Petroleum Industries
- Environmental

APPROVALS / WARRANTY



Wichita · Sydney

GREAT PLAINS INDUSTRIES

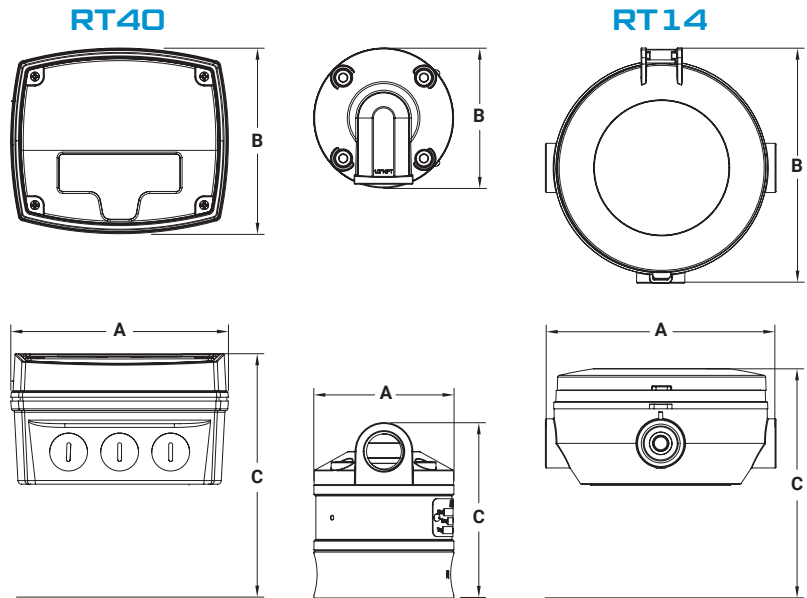


OM SERIES

INTERMEDIATE PRESSURE

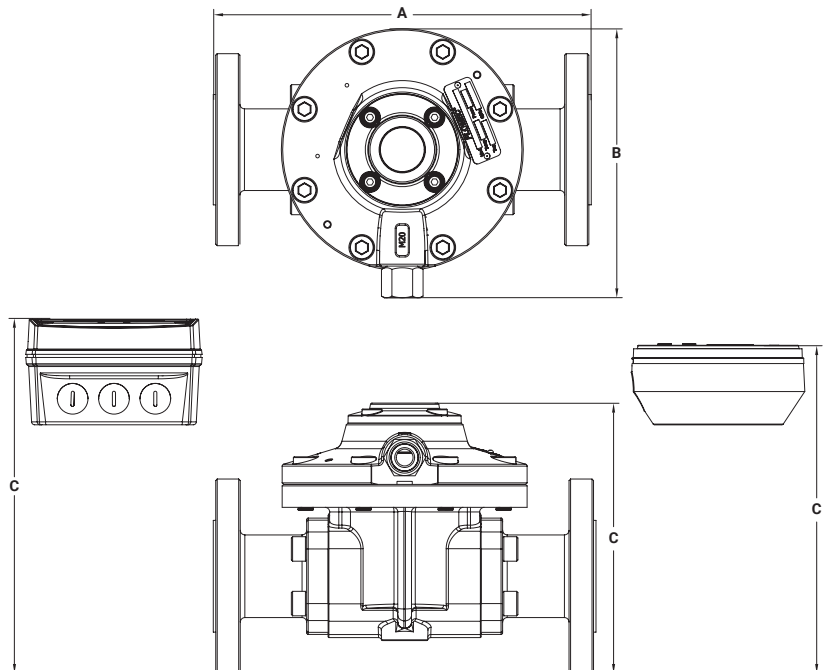
DIMENSIONS REFERENCE THREADED

	Dimension "A"	Dimension "B"	Dimension "C"
OM004	2.9 in. (7.4 cm)	2.9 in. (7.4 cm)	3.7 in. (9.4 cm)
OM004 RT14	4.8 in. (12.2 cm)	4.9 in. (12.4 cm)	4.7 in. (11.9 cm)
OM004 RT40	4.5 in. (11.4 cm)	3.9 in. (9.9 cm)	5 in. (12.7 cm)
OM006	2.9 in. (7.4 cm)	2.9 in. (7.4 cm)	3.7 in. (9.4 cm)
OM006 RT14	4.8 in. (12.2 cm)	4.9 in. (12.4 cm)	4.7 in. (11.9 cm)
OM006 RT40	4.5 in. (11.4 cm)	3.9 in. (9.9 cm)	5 in. (12.7 cm)
OM008	2.9 in. (7.4 cm)	2.9 in. (7.4 cm)	3.9 in. (9.9 cm)
OM008 RT14	4.8 in. (12.2 cm)	4.9 in. (12.4 cm)	4.8 in. (12.2 cm)
OM008 RT40	4.5 in. (11.4 cm)	3.9 in. (9.9 cm)	5.2 in. (13.2 cm)
OM015	4.4 in. (11.2 cm)	5.1 in. (13 cm)	3.9 in. (9.9 cm)
OM015 RT14	4.8 in. (12.2 cm)	5.4 in. (13.7 cm)	5.5 in. (14 cm)
OM015 RT40	4.5 in. (11.4 cm)	5.1 in. (13 cm)	6.1 in. (15.5 cm)



DIMENSIONS REFERENCE FLANGE

	Dimension "A"	Dimension "B"	Dimension "C"
OM025	9.3 in. (23.6 cm)	5.5 in. (14 cm)	5.6 in. (14.2 cm)
OM025 RT14	9.3 in. (23.6 cm)	5.7 in. (14.5 cm)	7.2 in. (18.3 cm)
OM025 RT40	9.3 in. (23.6 cm)	5.5 in. (14 cm)	7.8 in. (19.8 cm)
OM040	9.8 in. (24.9 cm)	7 in. (17.8 cm)	7 in. (17.8 cm)
OM040 RT14	9.8 in. (24.9 cm)	7 in. (17.8 cm)	8.5 in. (21.6 cm)
OM040 RT40	9.8 in. (24.9 cm)	7 in. (17.8 cm)	9.2 in. (23.4 cm)
OM050	10.9 in. (27.7 cm)	7.9 in. (20.1 cm)	7.7 in. (19.6 cm)
OM050 RT14	10.9 in. (27.7 cm)	7.9 in. (20.1 cm)	9.3 in. (23.6 cm)
OM050 RT40	10.9 in. (27.7 cm)	7.9 in. (20.1 cm)	9.9 in. (25.1 cm)
OM080	10.7 in. (27.2 cm)	7.3 in. (18.5 cm)	7 in. (17.8 cm)
OM080 RT14	10.7 in. (27.2 cm)	7.3 in. (18.5 cm)	8.7 in. (22.1 cm)
OM080 RT40	10.7 in. (27.2 cm)	7.3 in. (18.5 cm)	9.4 in. (23.9 cm)



If you have questions, please reach out to our product support team.

North or South America: GreatPlainsIndustries.com | **Product Support:** 800-835-0113 | Support-Meters@gplains.com
Outside North or South America: FLOMEC.com.au | **Product Support:** +61 2 9540 4433 | info@flomec.com.au