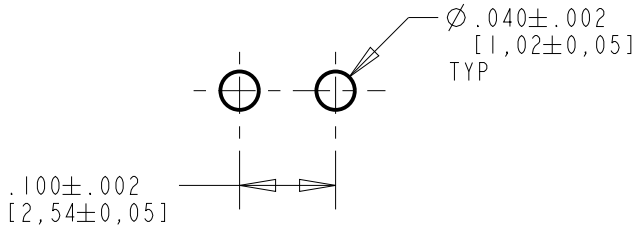
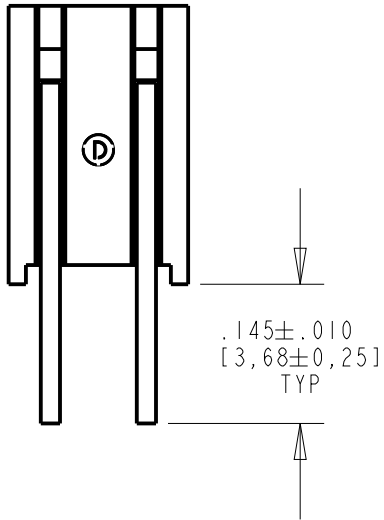
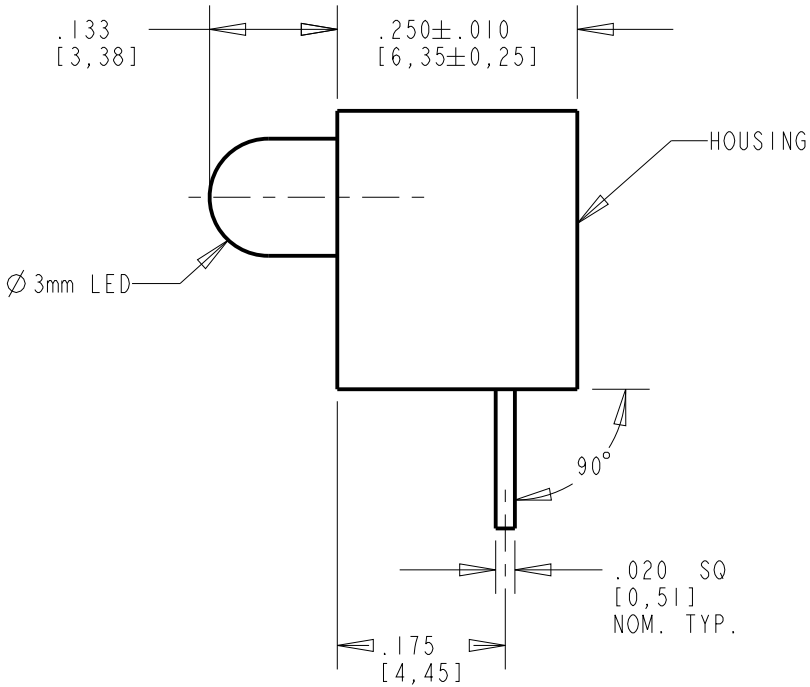
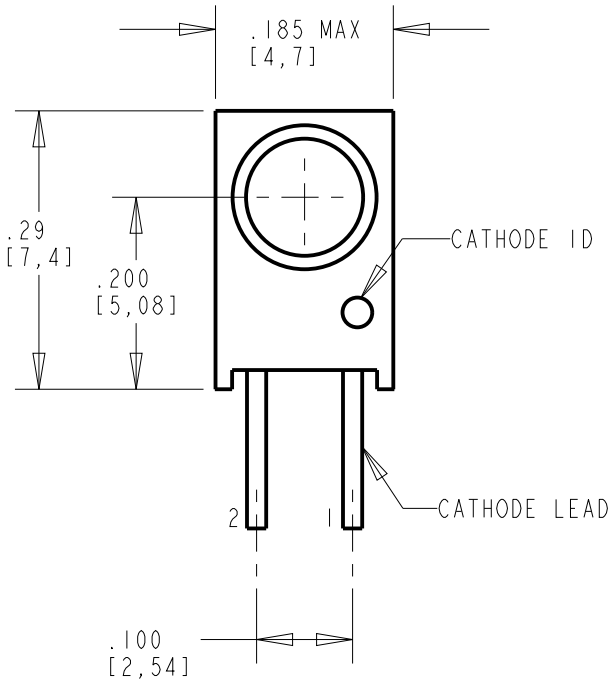


| OPERATING CHARACTERISTICS AT T _a = 25°C | | | | | | | | | | |
|--|-------|-------------------------|------|---------------------|-----|-------------------------|--------------------------|--------------------------|-------------------|-----------|
| PART NUMBER | COLOR | LUMINOUS INTENSITY (cd) | | FORWARD VOLTAGE (V) | | DC REVERSE CURRENT (μA) | DOMINANT WAVELENGTH (nm) | VIEWING ANGLE 2 Θ1/2 (°) | COLOR COORDINATES | |
| | | MIN | TYP | TYP | MAX | MAX | TYP | TYP | X | Y |
| 551-4007F | BLUE | 0.6 | 1.0 | 3.6 | 4.0 | 50 | 470 | 30 | — | — |
| 551-4107F | WHITE | 1.98 | 3.78 | 3.2 | 3.5 | 50 | — | 50 | 0.23/0.39 | 0.22/0.42 |
| 551-4207F | GREEN | 2.0 | 3.4 | 3.5 | 4.0 | 50 | 525 | 30 | — | — |

| ABSOLUTE MAXIMUM RATINGS AT T _a = 25°C | | | | | |
|---|--|------------------------|------------------------|----------------------------|--------------------------|
| DC FORWARD CURRENT (mA) | PULSE FORWARD CURRENT (mA) [≤10ms, 1/10 DUTY] | DC REVERSE VOLTAGE (V) | POWER DISSIPATION (mW) | OPERATING TEMPERATURE (°C) | STORAGE TEMPERATURE (°C) |
| 30 | 100 | 5 | 105 | -30 TO +85 | -40 TO +100 |



ATTENTION:
OBSERVE PRECAUTIONS FOR
HANDLING ELECTROSTATIC
SENSITIVE DEVICES

NOTES:

- LED LEADS ARE SILVER (Ag) PLATED OVER COPPER (Cu) ALLOY BASE METAL.
- LED LEAD DIMENSIONS SHOWN ARE MEASURED AT HOUSING EXIT.
- LEADS TO FIT INTO HOLES SPACED AS PER PATTERN.
- PIN NUMBERS FOR REFERENCE ONLY, DESIGNATION NON-EXISTENT ON PART.
- DIALIGHT PART NUMBERS: 551-4007F, 551-4107F, 551-4207F
- THIS ASSEMBLY CONTAINS ELECTROSTATIC DISCHARGE SENSITIVE DEVICES (ESDS). MAINTAIN ALL PRECAUTIONARY MEASURES DURING ASSEMBLY, HANDLING, AND STORAGE IN ACCORDANCE WITH IPC-A-610.

RoHS COMPLIANT 551-4X07F

Part Numbers with the "F" suffix ending are RoHS Compliant.
For example: 551-4107F
Packaging is marked with "RoHS Compliant" label or equivalent markings. Parts can be wave soldered, dip soldered or hand soldered using typical lead-free soldering process with max 260°C temp. for 5 sec.

| REV | ECN NO | REVISIONS | DRN | CKD | APP | DATE |
|-----|--------|-------------------------|-----|-----|-----|---------|
| A | — | NEW RELEASE | KLJ | NO | - | 7-24-08 |
| B | — | UPDATED WHITE LED SPECS | VP | JTD | NO | 2-19-16 |

| | | | | | |
|---|--|---|--|--|----------|
| THIS DRAWING AND THE CONTENTS HEREIN ARE CONFIDENTIAL AND THE SOLE PROPERTY OF DIALIGHT. REPRODUCTION OF THIS DRAWING OR CONSTRUCTION OF ANY PARTS WITHIN THIS DRAWING ARE FORBIDDEN WITHOUT THE WRITTEN CONSENT OF DIALIGHT. | | | | | |
| SCALE: DRAWING SCALE | | DRAWING NUMBER C-17641 | | | REV B |
| ALL DIM'S IN: INCHES (MM) | | | | | |
| TOLERANCES: UNLESS OTHERWISE SPECIFIED | | TITLE SINGLE COLOR Ø3mm CBI RoHS COMPLIANT | | | |
| FRACTIONS: ±1/64 DECIMALS (.XX): ±.02 DECIMALS (.XXX): ±.015 | | | | | |
| ANGLES: ±3° | | MATERIAL | | | |
| FINISH: | | | | | |
| FSCM 83330 | | Dialight ○○○○○○●●●●●● | | 1501 ROUTE 34 SOUTH FARMINGDALE, NJ 07727 | |
| | | SHEET 1 OF 1 | | FAMILY TABLE: | |