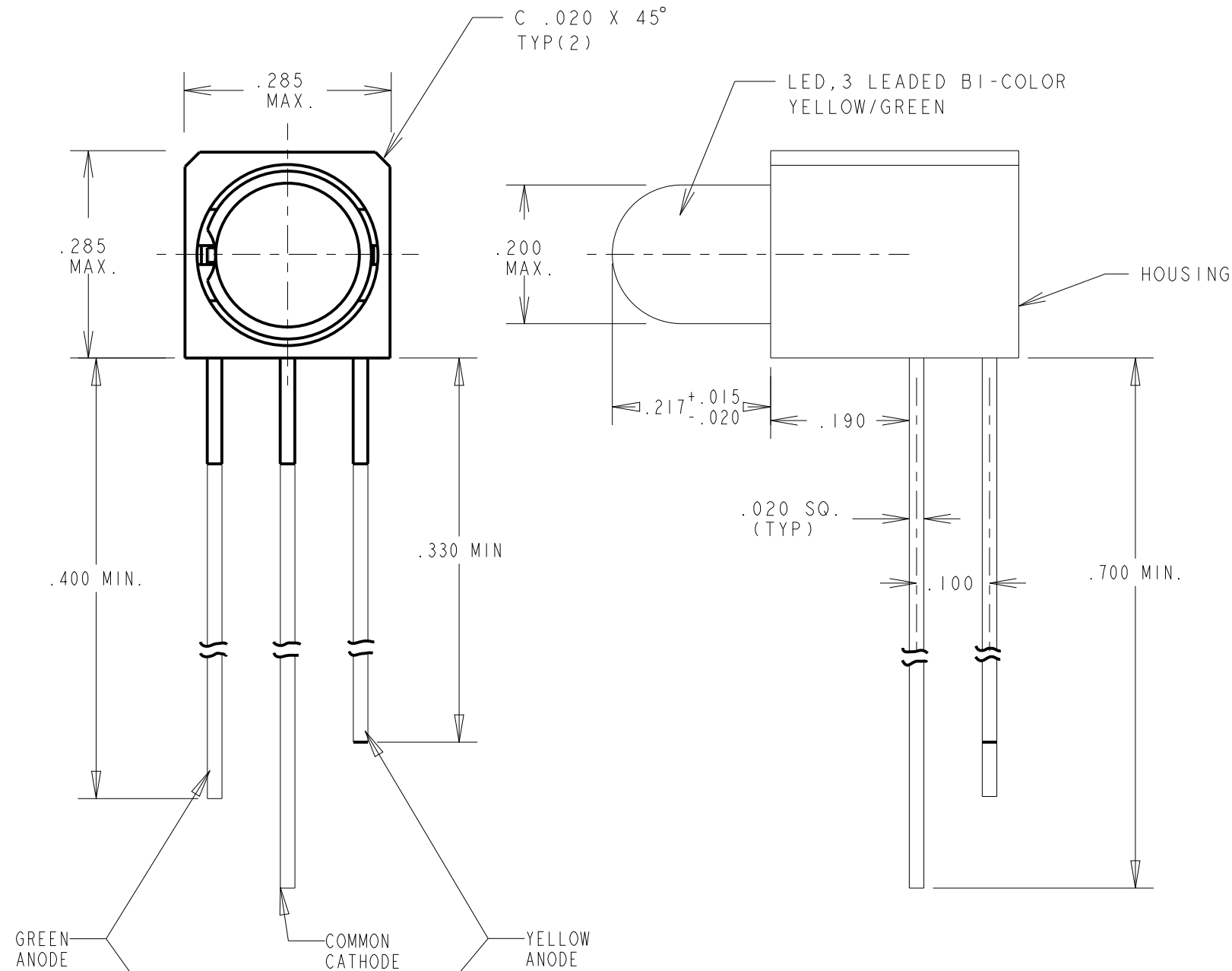


REV.	ECN NO.	REVISIONS	DRN.	CKD.	APP.	DATE
A		NEW RELEASE	VP	JTD	NO	2-12-16

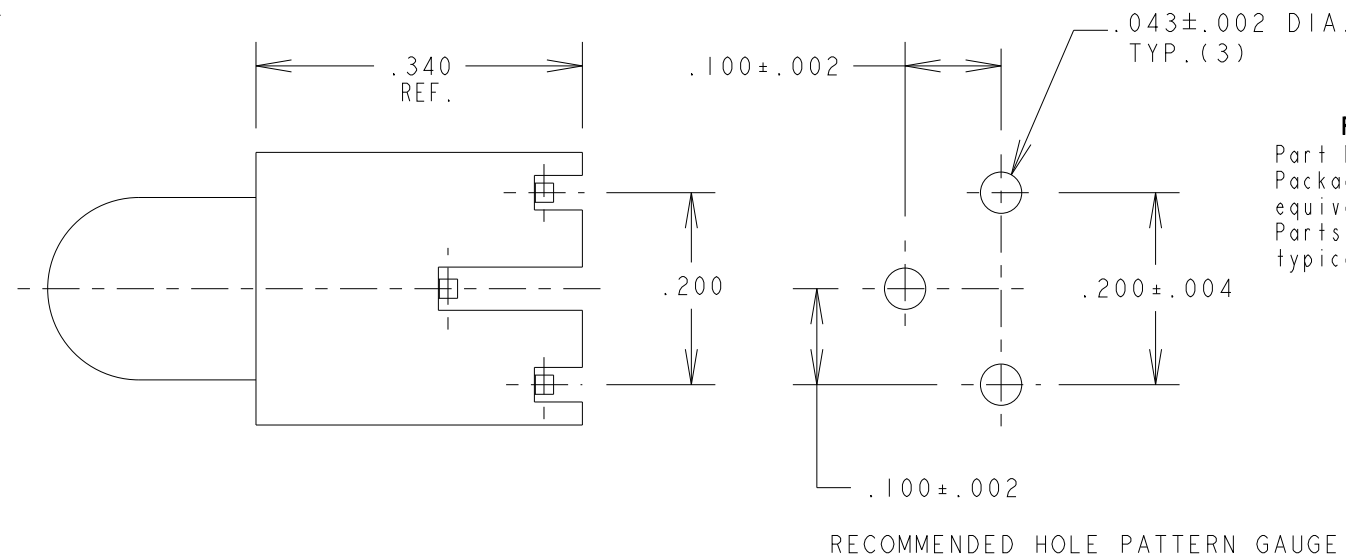
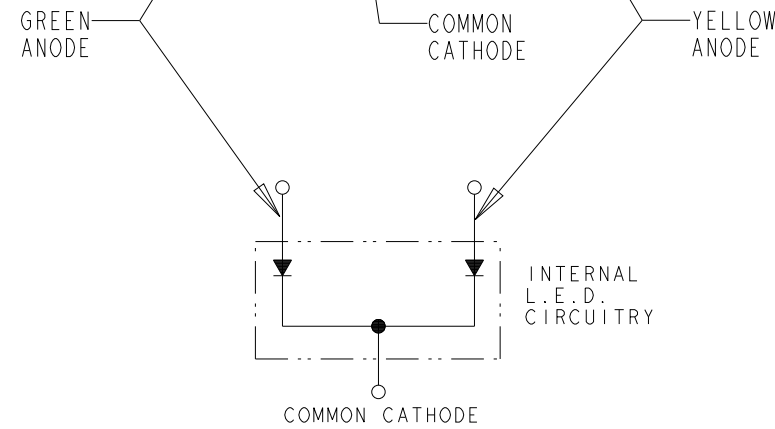


OPERATING CHARACTERISTICS AT 25°C AMBIENT										
LED COLOR	PEAK WAVELENGTH (nm)	DOMINANT WAVELENGTH (nm)		LUMINOUS INTENSITY (mcd) • IF-20mA			FORWARD VOLTAGE (V) • IF-20mA			VIEWING ANGLE (DEG)
	TYP	MIN	TYP	MAX	MIN	TYP	MAX	MIN	TYP	
YELLOW	591	586	590	593	240	400	680	2.1	2.4	30
GREEN	565	566	569	572	120	240	400	2.1	2.4	30

ABSOLUTE MAXIMUM RATINGS AT 25°C AMBIENT				YELLOW	GREEN	UNITS
POWER DISSIPATION				75	75	mW
PEAK FORWARD CURRENT (1/10 DUTY CYCLE, 10ms PULSE WIDTH)				60	60	mA
CONTINUOUS FORWARD CURRENT				30	30	mA
LINEAR DERATING FROM 30°C				0.4	0.4	mA/°C
LEAD SOLDERING TEMPERATURE (.079" [2mm] FROM BODY) FOR 5 SEC.				260		°C
OPERATING TEMPERATURE				-40 TO +100		°C
STORAGE TEMPERATURE				-55 TO +100		°C

NOTES:

- LEADS TO FIT INTO .043 DIA. HOLES SPACED AS PER HOLE PATTERN.
- LED LEAD DIMENSIONS SHOWN ARE MEASURED AT HOUSING EXIT.
- PIN NUMBERS FOR REFERENCE ONLY. DESIGNATION NON-EXISTENT ON PARTS.
- DIALIGHT PART NO. 550-3605-100F.



RoHS Compliant 550-3605-100F

Part Numbers with the "F" suffix ending are RoHS Compliant. Packaging is marked with "RoHS Compliant" label or equivalent markings. Parts can be wave soldered, dip soldered or hand soldered using typical lead-free soldering process with max 260°C temp. for 5 sec.

THIS DRAWING AND THE CONTENTS HEREIN ARE CONFIDENTIAL AND THE SOLE PROPERTY OF DIALIGHT. REPRODUCTION OF THIS DRAWING OR CONSTRUCTION OF ANY PARTS WITHIN THIS DRAWING ARE FORBIDDEN WITHOUT THE WRITTEN CONSENT OF DIALIGHT.		
SCALE: 25:1000	DRAWING NUMBER	REV
ALL DIM'S IN: INCHES (MM)	C-18204	A
TOLERANCES: UNLESS OTHERWISE SPECIFIED	TITLE 5mm 3 LEADED BI-COLOR Y/G UN CUT LEADS CBI	
FRACTIONS: ±1/64	MATERIAL	
DECIMALS (.XX): ±.020	Dialight 1501 ROUTE 34 SOUTH FARMINGDALE, NJ 07727	
DECIMALS (.XXX): ±.005	FSCM 83330	
DECIMALS (.XXXX): ±.0005	SHEET 1 OF 1 FAMILY TABLE:	
ANGLES: ±3°		
FINISH:		