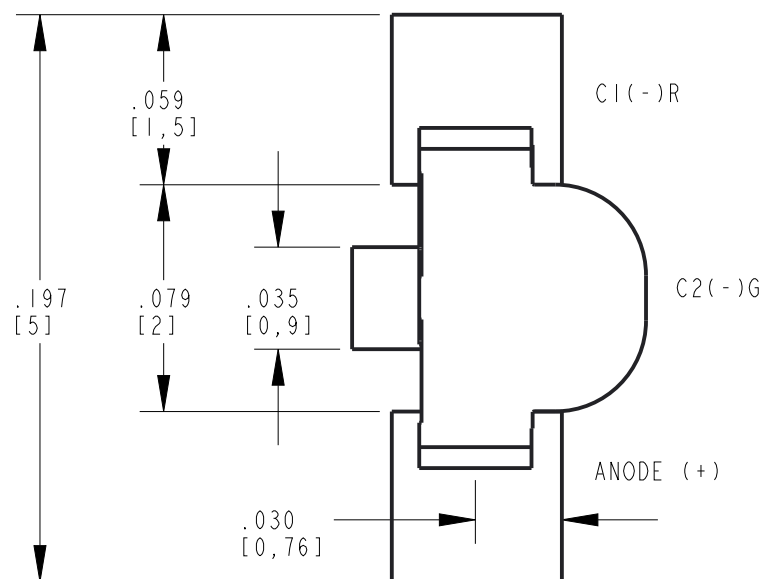
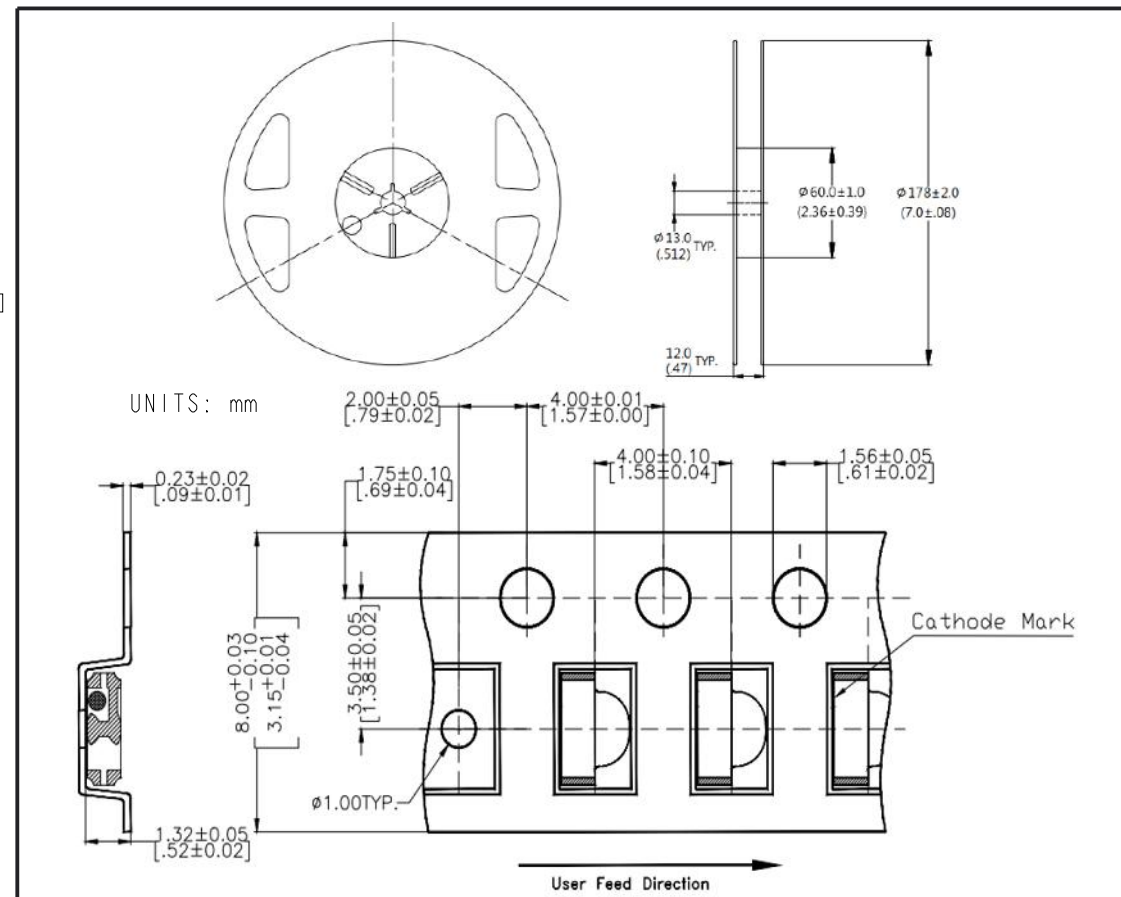


RECOMMENDED PAD LAYOUT



PACKAGE DIMENSIONS OF TAPE AND REEL

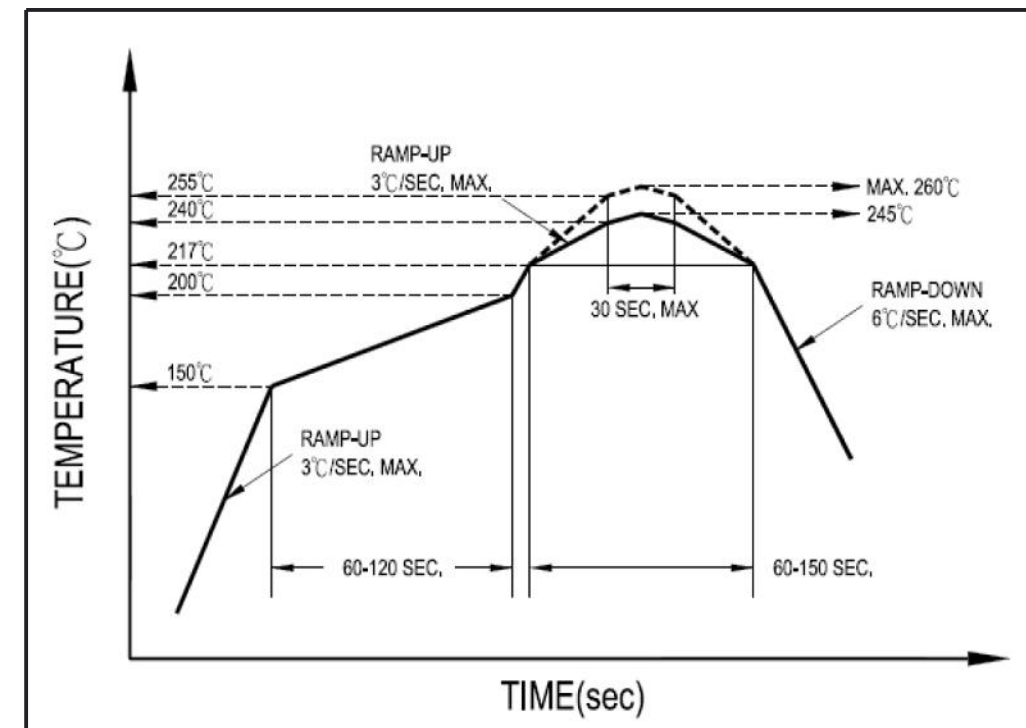


OPERATING CHARACTERISTICS AT 25°C AMBIENT						
LED CHARACTERISTICS	COLOR	MIN	TYP	MAX	UNITS	TEST CONDITIONS
LUMINOUS INTENSITY	GREEN	112		450	mcd	$I_F = 20 \text{ mA}$
	RED	71		180		
FORWARD VOLTAGE	GREEN	2.7		3.8	V	$I_F = 20 \text{ mA}$
	RED	1.6		2.6		
REVERSE CURRENT	GREEN			10	mA	$V_R = 5 \text{ V}$
	RED			10		
DOMINANT WAVELENGTH	GREEN	520	530	535	nm	$I_F = 20 \text{ mA}$
	RED	625	630	635		
PEAK WAVELENGTH	GREEN		525		nm	$I_F = 20 \text{ mA}$
	RED		632			
VIEWING ANGLE (2 Ω 1/2)	GREEN/RED		130		DEGREE	$I_F = 20 \text{ mA}$
ABSOLUTE MAXIMUM RATINGS AT 25°C AMBIENT					GREEN	RED
POWER DISSIPATION					76	62.5
DC FORWARD CURRENT					20	25
PEAK FORWARD CURRENT					100	60
OPERATING TEMPERATURE					-20 to 80	
STORAGE TEMPERATURE					-30 to 85	
					UNITS	
					mW	
					mA	
					°C	
					°C	

- NOTES:
- DIALIGHT PART NUMBERS:
5972753602F FOR 20 PCS. SAMPLE STRIP
5972753607F FOR 3000 PCS 7" REEL
 - THIS ASSEMBLY CONTAINS ELECTROSTATIC DISCHARGE SENSITIVE DEVICES (ESDS). MAINTAIN ALL PRECAUTIONARY MEASURES DURING ASSEMBLY, HANDLING AND STORAGE IN ACCORDANCE WITH IPC-A-610.
 - MOISTURE SENSITIVITY LEVEL IS 3
 - QUANTITY IS 3000 PIECES PER REEL.

REV	REVISIONS	DRN	CKD	DATE
A	NEW RELEASE	LD	NO	11-3-21
B	REVISED NOTE 1	LD	NO	4-6-22

RECOMMENDED SOLDER PROFILE



MARK	DEFINITION	CONDITION
$T_{S_{max}}$	Maximum of pre-heating temperature	200 °C
$T_{S_{min}}$	Minimum of pre-heating temperature	150 °C
T_s	Time form T_{smin} to T_{smax}	60-120 sec
T_L	Reference temperature	217 °C
t_L	Retention time for T_L	within 60s
T_p	Peak Temperature	260 °C
t_p	Time for peak temperature	within 10s
DTr/Dt	Temperature rising rate	under 3° C/sec
DTd/Dt	Temperature decreasing rate	under -6° C/sec

THIS DRAWING AND THE CONTENTS HEREIN ARE CONFIDENTIAL AND THE SOLE PROPERTY OF DIALIGHT CORP. REPRODUCTION OF THIS DRAWING OR CONSTRUCTION OF ANY PARTS WITHIN THIS DRAWING ARE FORBIDDEN WITHOUT THE WRITTEN CONSENT OF DIALIGHT CORP.

DIALIGHT CORP. INTERNAL REFERENCE ONLY - 3D MODEL : X-A-1

SCALE: 30.000		DRAWING NUMBER	REV
ALL DIM's: INCH (mm)		C-18539	B
TOLERANCES: UNLESS OTHERWISE SPECIFIED		TITLE	
FRACTIONS: $\pm 1/64$		SM 1208 Right ANGLE R/TG	
DECIMALS (.XX): $\pm .01$		MATERIAL	
DECIMALS (.XXX): $\pm .005$			
DECIMALS (.XXX): $\pm .0005$			
ANGLES: $\pm 1^\circ$			
FINISH			
-			
FSCM 83330			
SHEET 1 OF 1		FAMILY TABLE:	

Dialight
1501 ROUTE 34 SOUTH
FARMINGDALE, NJ 07727
(732) 919-3119
www.dialight.com